

**THE VISUAL AIDS ON THE FOLLOWING
PAGES ARE FOR REFERENCE ONLY AND
NOT INTENDED FOR OFFICIAL USE.**

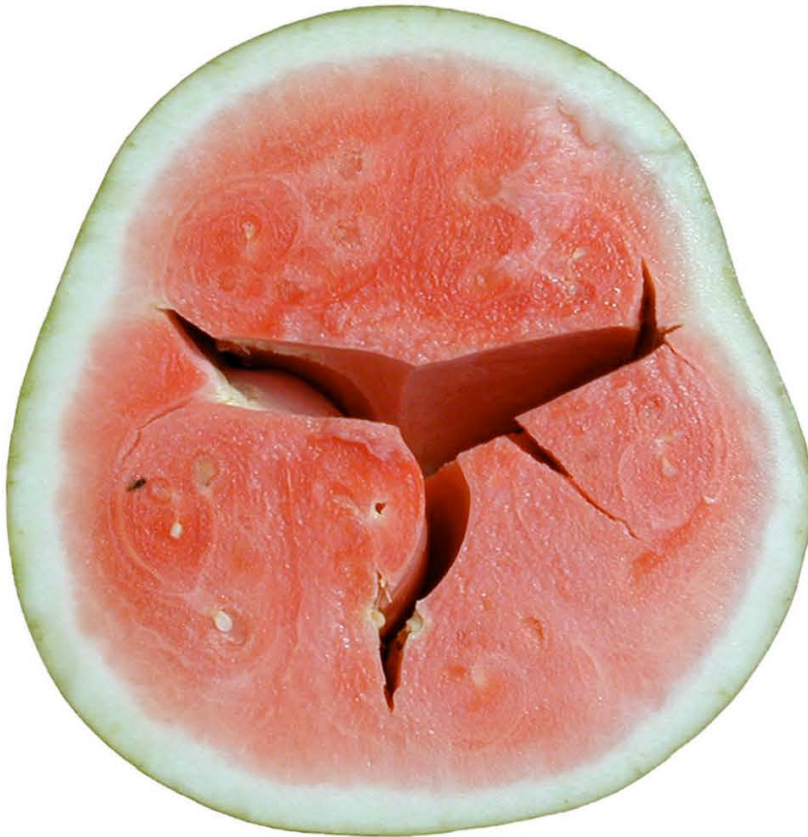
**TO PURCHASE OFFICIAL VISUAL AIDS PLEASE CONTACT
THE SPECIALTY CROPS INSPECTION DIVISION'S
EQUIPMENT AND FORMS DEPOT**

**USDA, AMS, SCP, SCI
831 MITTEN ROAD, ROOM 200
BURLINGAME, CA 94010
PHONE: 650-552-9073
FAX: 650-552-9147**

[EQUIPMENT CATALOG](#)

WATERMELONS

**Hollow Heart
(crosswise cut)**



Extreme example found with “traditional” crosswise cut. Crack extends horizontally through the melon from stem to blossom end. Note the indented areas of the melon circumference that correspond with each crack.

**Hollow Heart
(lengthwise cut)**



Crack is oriented vertically, toward one end of this long type melon. Detected with a lengthwise cut, not evident using the “traditional” crosswise cut.

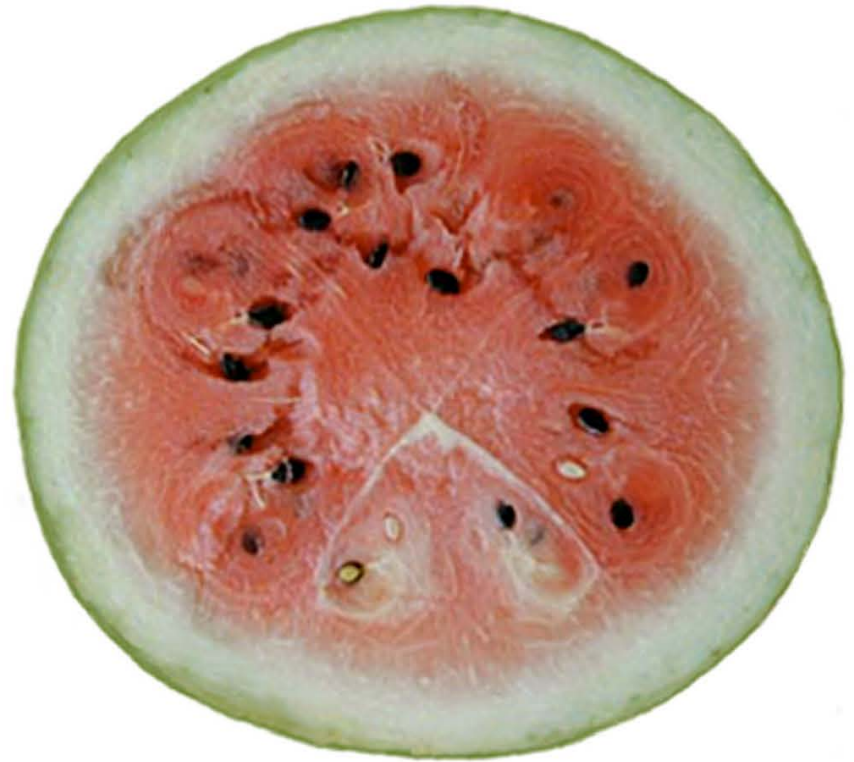
WATERMELONS

Internal Rind Spot



Seldom, if ever, detected externally. Associated with drought conditions. Spots are tan to brown, generally hard, dry and confined to the inner rind.

Second Growth



Color of affected areas can range white to light brown with flesh generally less than “fairly sweet.”

OVERRIPE



Melon has open seed cavities and stringy, crystallized (mealy) flesh

**WAT-IDENT-3
May 2000**

Examples of Sunscald & Sunburn on Watermelons

Sunscald (condition defect)



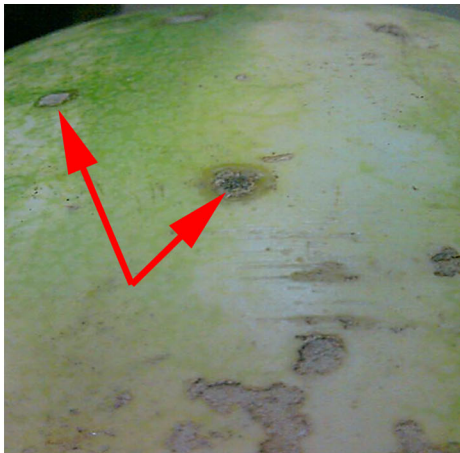
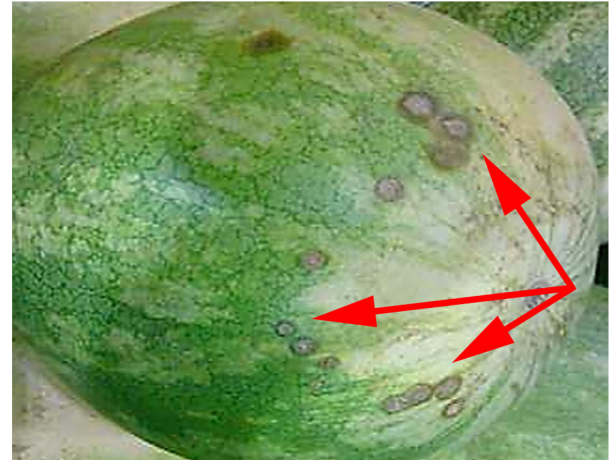
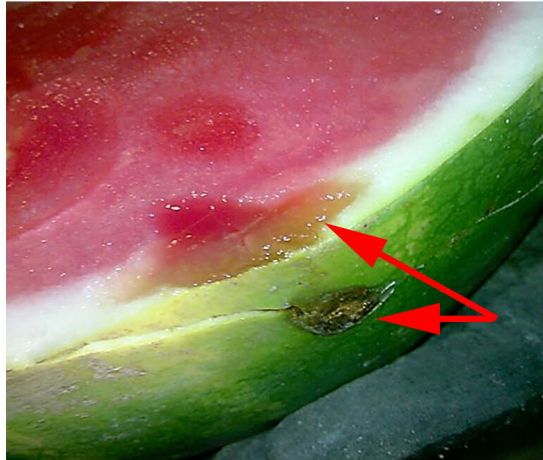
Sunburn (quality defect)



Anthracnose (C)

Always serious damage. Score any amount.

Report as decay only when penetrating the rind, or when large and soft enough to be easily penetrated with finger pressure, as shown in top left photo.



Hail, Scars, and Rind Worm Injury (Q)

Apply same scoring guide to these defects.

Hail



Hail



Rind Worm



Scar

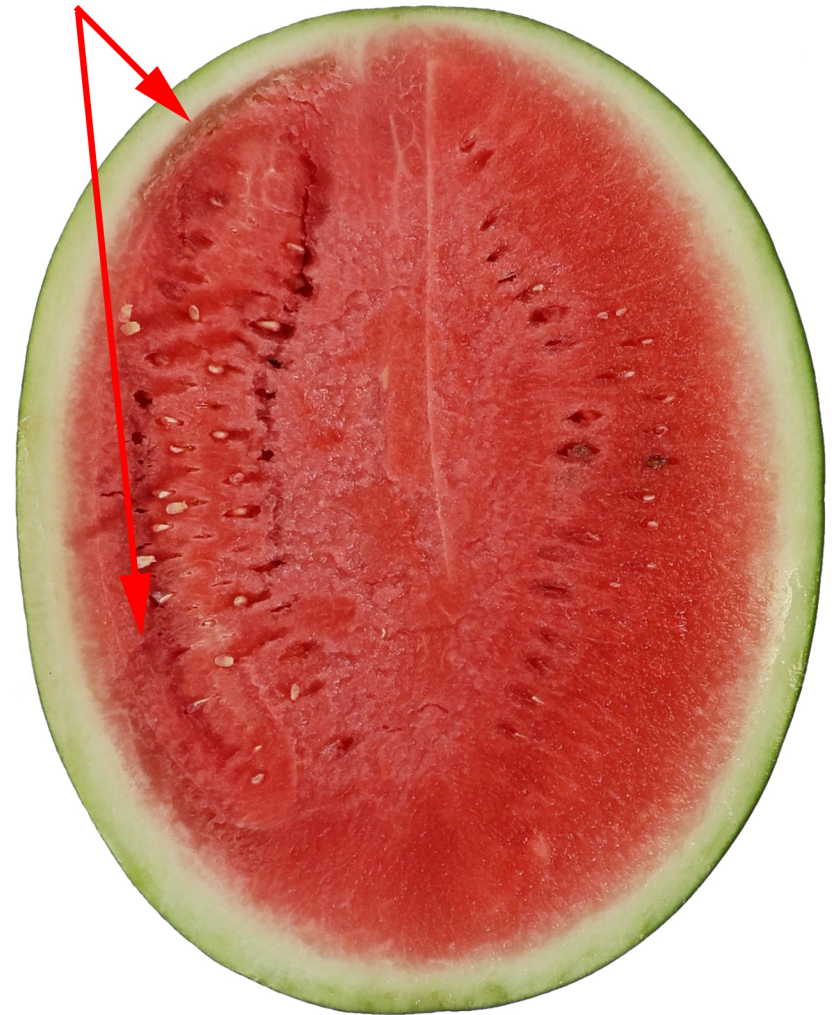
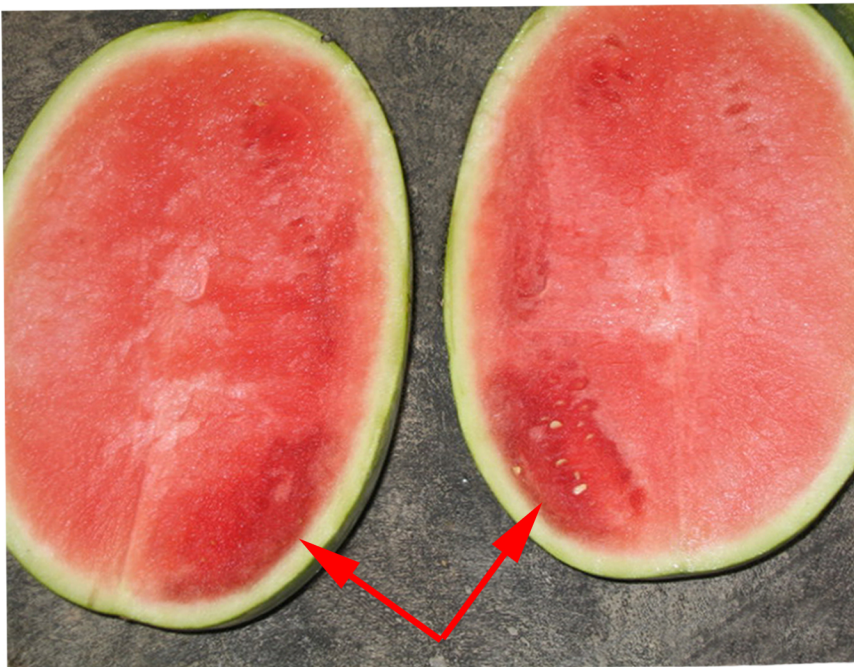


Scar



Watermelons

Examples of Bruising (C)



USDA WAT-IDENT-7 October 2020

Watermelons: Immaturity (Q)

Immature is always scored as serious damage.

Immature
(external view)



Immature
(internal view of same melon)



Not immature.

Even though flesh color of melon on right is much lighter than melon on left, it is not lighter than color shown on WAT CC-1.

The WAT-CC-1 shown here is for demonstration purposes only; do not use as a substitute for the actual color comparator.

Watermelons: Rind Worm Injury on Ground Spot (Q)

Scoring Guide

Damage: Score when the aggregating rind worm scars exceed 3 square inches on a 15 pound melon. Allow corresponding larger or smaller areas on larger or smaller melons. The portion of rind worm injury occurring on the ground spot is only scorable as damage when seriously detracting from the appearance.

Scorable as damage since affected area on ground spot is greater than 3 square inches and seriously detracts from the appearance.



Maximum allowed. Not scorable as damage since affected area on ground spot **only** materially detracts from the appearance.



Watermelons: Ground Spot on Different Varieties

Ground spot is more yellow on some varieties, such as Crackerjack. Not to be confused with sunburn.



Underside
(belly)
with
ground
spot

Ground spot is more tannish on other varieties, such as Embassy.



Underside
(belly)
with
ground
spot



Same
melon
topside



Same
melon
topside

Watermelons: Shape (Q)

Shape permissible in U.S. No. 2 grade.



Shapes not permissible in U.S. No. 2 grade.



Watermelons: Examples of Second Growth (Q)

To determine if there is second growth, cut the melon crosswise (between the stem and blossom ends) as shown below.

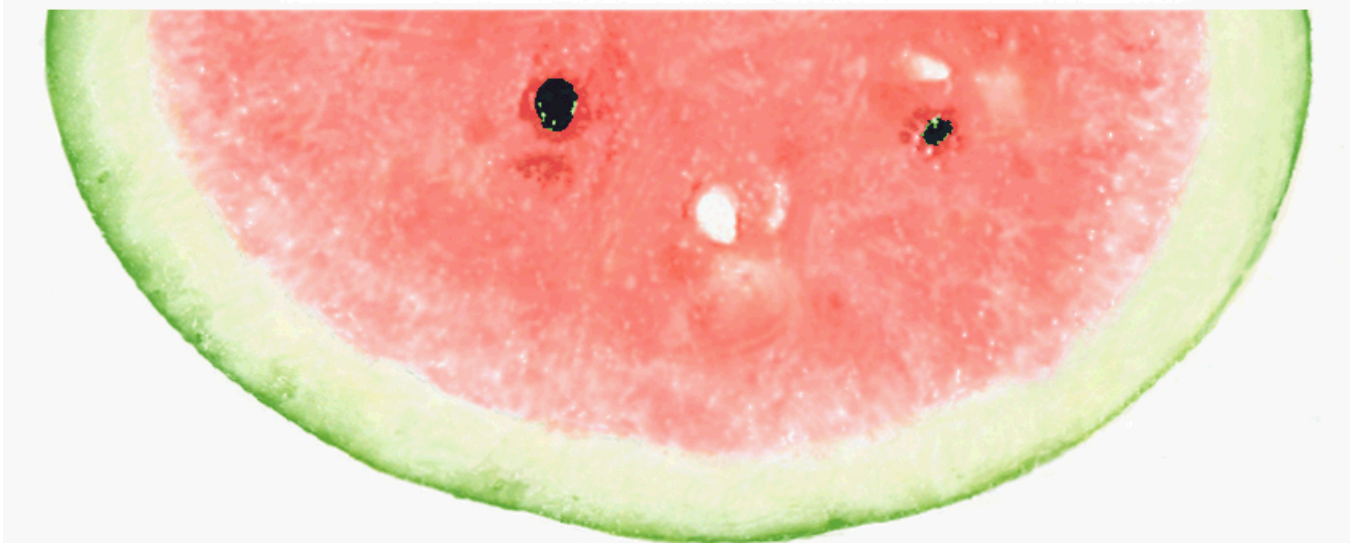


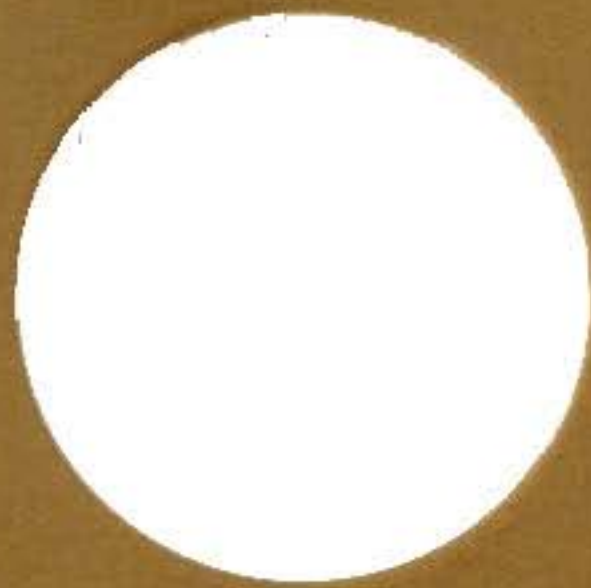
Score as serious damage on a 15 pound melon when there are 3 or more curlicues, 1 to 2 inches in diameter, which are not at least fairly sweet.

Both melons shown are 15 pounds and both have more than 3 curlicues 2 inches and larger in diameter and are scorable (assuming they are not fairly sweet). The melon on the right has more typical pale pink to white flesh surrounding the heart.

These are not minimums but are examples of second growth.

WATERMELONS





USDA WAT-CC-2

Watermelons: Medium Brown

**This is the minimum brown
color for scoring Transit Rubs.**

August 2014

WATERMELONS



Damage by Rind Worm Scarring

**Watermelons
Rind Worm Scarring C-1
March 1990 (Previously 1963)**

WATERMELONS

SLIDE 40 – MIXED VARIETIES



WATERMELONS

SLIDE 41 -- SHAPE



WATERMELONS

SLIDE 42 -- SHAPE



WATERMELONS

SLIDE 44 -- HAIL



WATERMELONS

SLIDE 45 – SCARRING HAIL



WATERMELONS

SLIDE 46 – RIND WORM



WATERMELONS

SLIDE 47 – WHITE HEART RIDGING



WATERMELONS

SLIDE 48 – WHITE HEART RIDGING



WATERMELONS

SLIDE 49 – WHITE HEART RIDGING



WATERMELONS

SLIDE 50 – WHITE HEART RIDGING



WATERMELONS

SLIDE 51 – WHITE HEART RIDGING



WATERMELONS

SLIDE 52 – IMMATURE EXTERNAL



WATERMELONS

SLIDE 54 – IMMATURE EXTERNAL



WATERMELONS

SLIDE 56 – HOLLOW HEART EXTERNAL



WATERMELONS

SLIDE 57 – HOLLOW HEART CULL



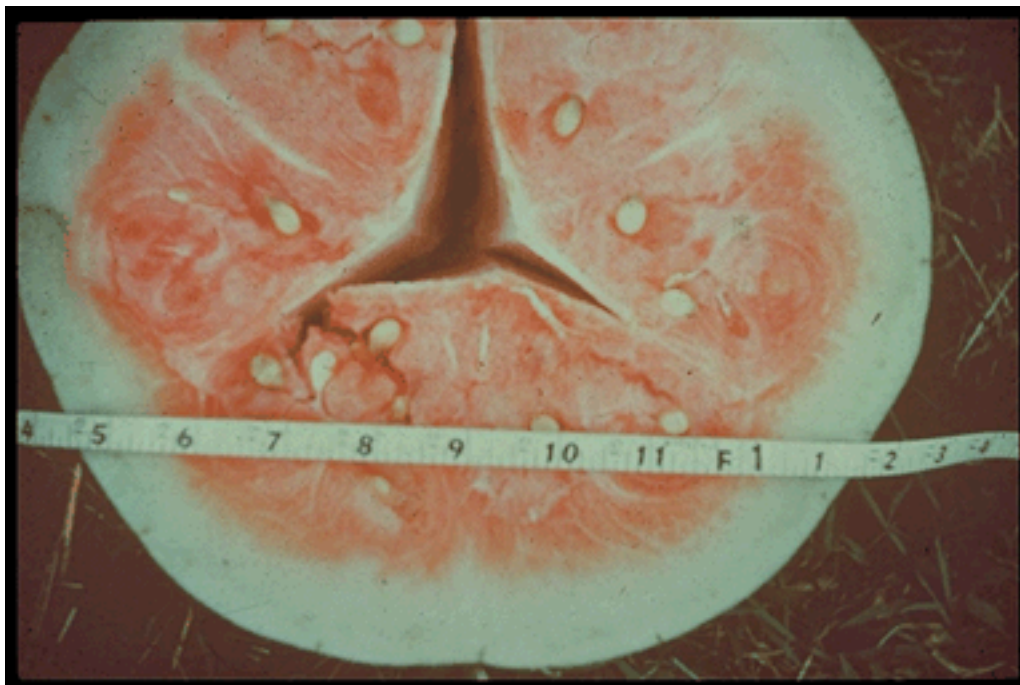
WATERMELONS

SLIDE 58 – HOLLOW HEART EXTERNAL



WATERMELONS

SLIDE 59 – HOLLOW HEART CULL



WATERMELONS

SLIDE 60 -- SUNBURN



WATERMELONS

SLIDE 61 -- SUNSCALD



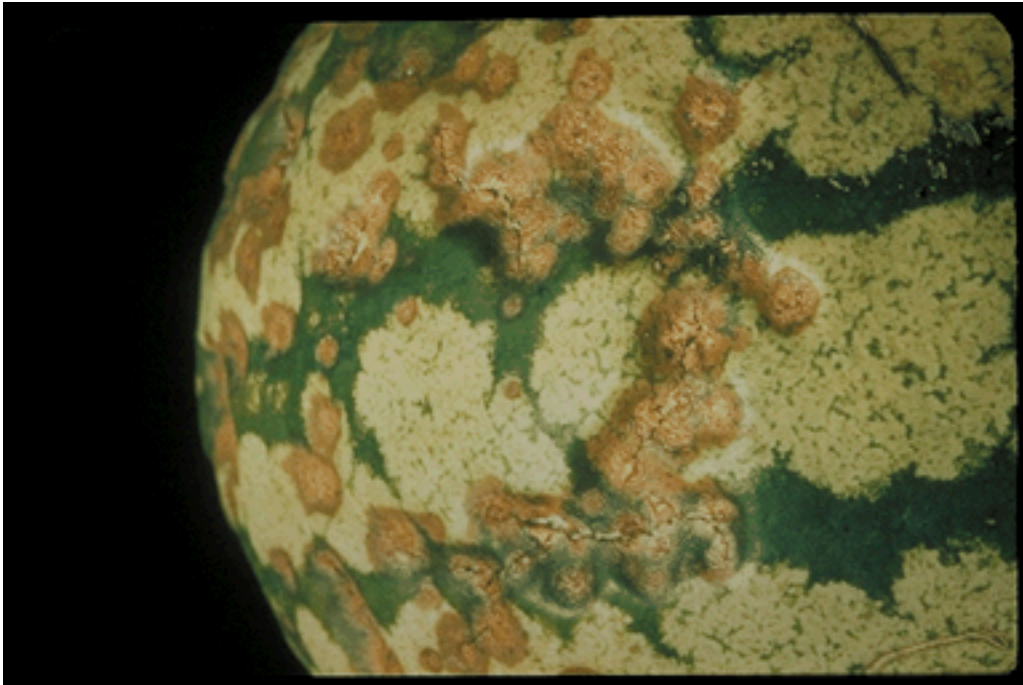
WATERMELONS

SLIDE 62 -- DECAY



WATERMELONS

SLIDE 63 -- ANTHRACNOSE



WATERMELONS

SLIDE 64 – NOT ANTHRACNOSE



WATERMELONS

SLIDE 65 -- SHAPE



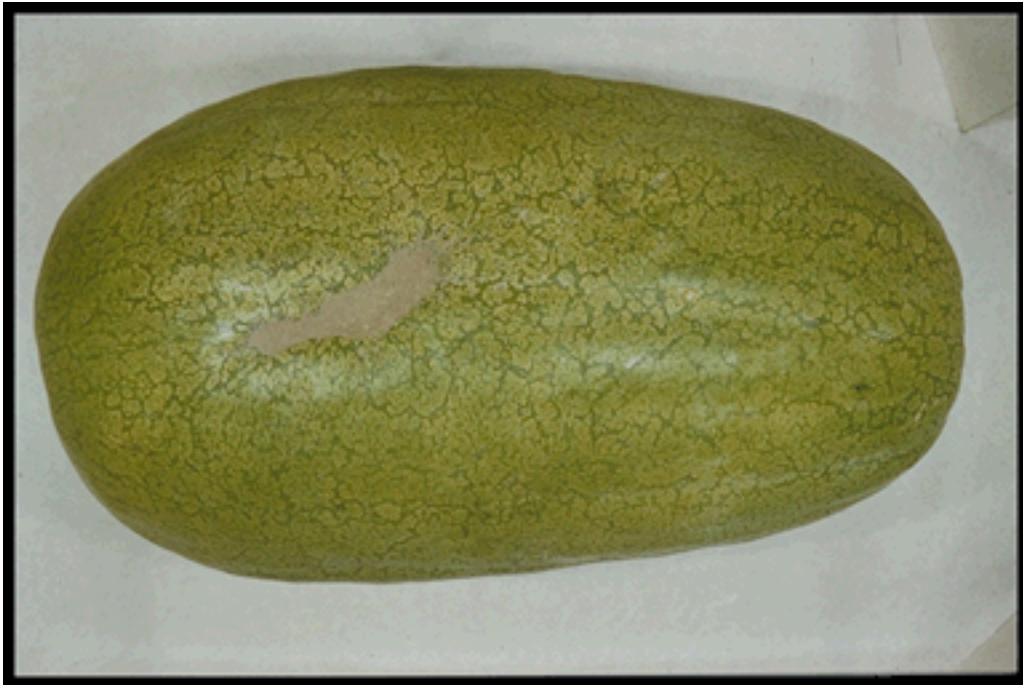
WATERMELONS

SLIDE 206 – RIND WORM INJURY



WATERMELONS

SLIDE 207 -- SCARRING



WATERMELONS

SLIDE 208 -- SCARRING



WATERMELONS

SLIDE 209 – HOLLOW HEART



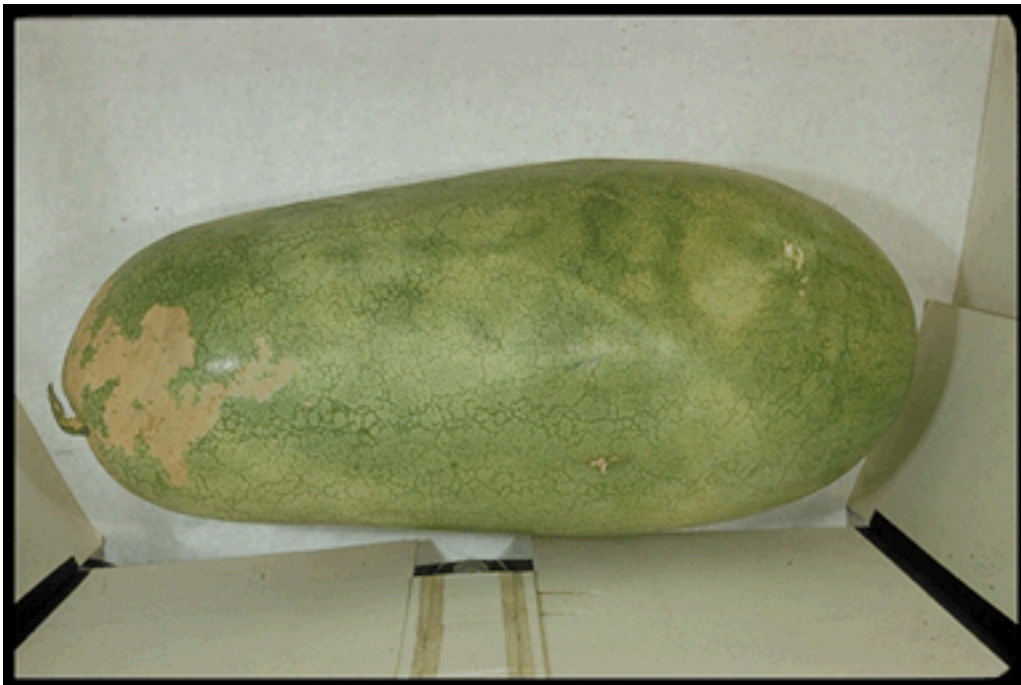
WATERMELONS

SLIDE 210 – HOLLOW HEART



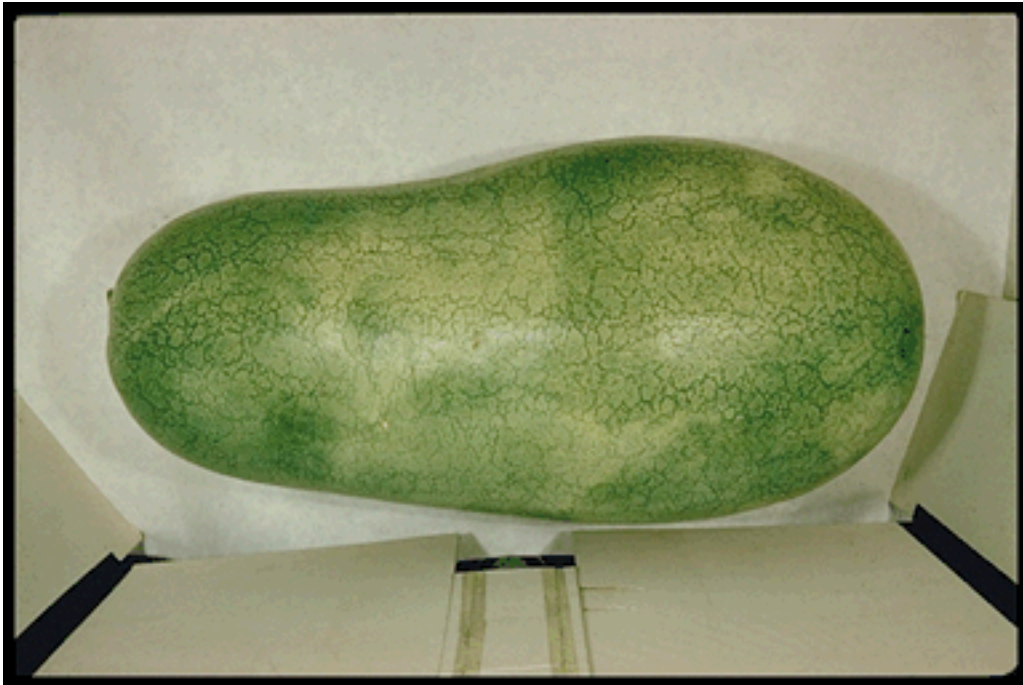
WATERMELONS

SLIDE 211 – RIND WORM INJURY



WATERMELONS

SLIDE 212 -- SCARRING



WATERMELONS

SLIDE 213 -- IMMATURE

