

**THE VISUAL AIDS ON THE FOLLOWING
PAGES ARE FOR REFERENCE ONLY AND
NOT INTENDED FOR OFFICIAL USE.**

TO PURCHASE OFFICIAL VISUAL AIDS PLEASE CONTACT
USDA, AMS, Dairy Program, Standardization Division
1400 Independence Ave., S.W.
Washington, DC 20250
PHONE: 202-690-3571
Yvette.Percell@ams.usda.gov



0 mg.



0.028 mg.



0.080 mg.



0.078 mg.



0.10 mg.



0.20 mg.



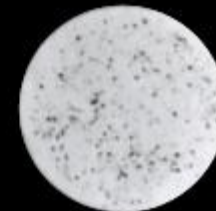
0.30 mg.



0.50 mg.



1.00 mg.



2.50 mg.

United States Department of Agriculture Sediment Standards for Milk and Milk Products.

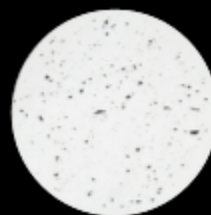
7 CFR 58.2726



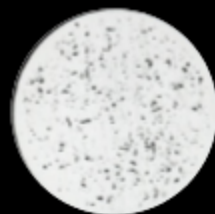
0
(0.0 mg.)



1
(0.6 mg.)



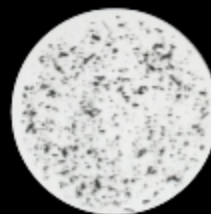
2
(1.6 mg.)



3
(2.6 mg.)



4
(3.0 mg.)



5
(6.0 mg.)

United States Department of Agriculture
Sediment Standards for Milk and Milk Products.

Prepared in cooperation with
U.S. Food and Drug Administration
and the American Public Health Association.

7 CFR 58.2728



1
(0.60 mg.)



2
(1.8 mg.)



3
(2.8 mg.)

United States Department of Agriculture Sediment
Standards for Milk and Milk Products.

Prepared in cooperation with U.S. Food and Drug Administration
and the American Public Health Association.

7 CFR 68.2729



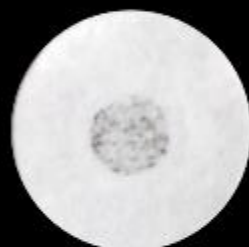
0
0.0 mg.
(0.0 mg. equiv.)



1
0.0625 mg.
(0.50 mg. equiv.)



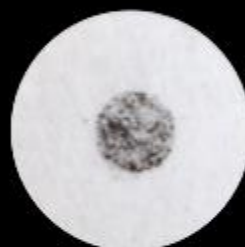
2
0.1875 mg.
(1.50 mg. equiv.)



3
0.3125 mg.
(2.50 mg. equiv.)



4
0.3750 mg.
(3.0 mg. equiv.)



5
0.75 mg.
(6.0 mg. equiv.)

**United States Department of Agriculture
Sediment Standards for Milk and Milk Products.**

**Prepared in cooperation with
U.S. Food and Drug Administration
and the American Public Health Association.**

7 CFR 58.2730



1
0.0625 mg.
(0.50 mg. equiv.)



2
0.1875 mg.
(1.50 mg. equiv.)

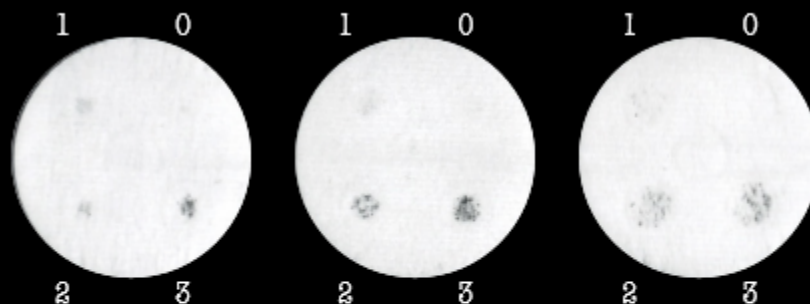


3
0.3125 mg.
(2.50 mg. equiv.)

United States Department of Agriculture Sediment
Standards for Milk and Milk Products.

Prepared in cooperation with U.S. Food and Drug Administration
and the American Public Health Association.

7 CFR 68.2731



0.10" Dia.

0 - 0.0 mg.
(0.0 mg. equiv.)

1 - 0.0039 mg.
(0.50 mg. equiv.)

2 - 0.0118 mg.
(1.50 mg. equiv.)

3 - 0.0196 mg.
(2.50 mg. equiv.)

0.14" Dia.

0 - 0.0 mg.
(0.0 mg. equiv.)

1 - 0.0078 mg.
(0.50 mg. equiv.)

2 - 0.0235 mg.
(1.50 mg. equiv.)

3 - 0.0391 mg.
(2.50 mg. equiv.)

0.20" Dia.

0 - 0.0 mg.
(0.0 mg. equiv.)

1 - 0.0156 mg.
(0.50 mg. equiv.)

2 - 0.0469 mg.
(1.50 mg. equiv.)

3 - 0.0781 mg.
(2.50 mg. equiv.)

United States Department of Agriculture
Sediment Standards for Milk and Milk Products.

Prepared in cooperation with
U.S. Food and Drug Administration
and the American Public Health Association.

7 CFR 58.2732