



Agricultural Refrigerated Truck Quarterly

a quarterly publication of the Agricultural Marketing Service

CONTENTS

National Summary.....	2	Quarterly Truck Availability.....	8	PNW	19
Quarterly Overview	2	Reported U.S. Shipments	10	Arizona	22
U.S. Truck Rates	3	Reported Shipments by Select		Great Lakes	25
Truck Rates for Select Routes.....	4	Commodities.....	11	Additional Information	28
U.S. Diesel Fuel Prices	5	Regional Markets.....	12	Terms and References.....	28
Relationship Between Diesel Fuel and		U.S. Mexico Border	12	Contact Us.....	29
Truck Rates.....	6	California.....	16		



NATIONAL SUMMARY

Quarterly Overview

Fruit and Vegetable Shipments

USDA reported fourth-quarter 2024 U.S. truck shipments of fresh produce were 8.3 million tons—down 8 percent from the previous quarter and down 4 percent from fourth quarter 2023.

Also, in fourth quarter 2024, shipments from Mexico were 2.73 million tons—a higher volume than from any other reported origin. Shipments from Mexico accounted for 33 percent of the total reported shipments of fresh fruit and vegetables. Shipments from the next six top regions by volume were as follows: California, 1.83 million tons (22 percent of the total); Pacific Northwest (PNW), 1.71 million tons (21 percent of the total); Canada, 567,000 tons (7 percent of the total); Arizona, 322,000 tons (4 percent of the total); Colorado, 241,000 tons (3 percent of the total); and finally, Great Lakes, 233,000 tons (3 percent of the total). (Note: Despite their top volumes, the regional markets analysis section of this report does not include Canada or Colorado, due to data limitations.)

These top five commodities accounted for 38 percent of reported truck movements in fourth quarter 2024:

- Potatoes (14 percent)
- Apples (9 percent)
- Dry onions (7 percent)
- Cucumbers (4 percent)
- Avocados (4 percent)

Truck Rates

The table below provides a snapshot of quarterly truck rates for U.S. produce shipments over four mileage categories—1-500; 501-1,500; 1,501-2,500; and 2,501+ miles. Please note the average U.S. truck rates provided below were calculated using weighted regional rates and volumes.

Average U.S. Truck Rates for Select Routes Between 501 and 1,500 Miles (\$/Mile)

	0-500 miles	501-1,500 miles	1,501-2,500 miles	2,501+ miles
Q4 2023	5.31	2.54	2.46	1.33
Q1 2024	5.82	2.69	2.43	1.64
Q2 2024	6.44	2.84	2.47	1.61
Q3 2024	6.99	2.58	2.37	1.29
Q4 2024	4.89	2.56	2.39	1.35
Q4 Change from Previous Quarter	-30%	-1%	< 1%	5%
Q4 Change from Same Quarter Last Year	-8%	< 1%	-3%	2%

Note: The rates for 8 long-haul fruit and vegetable truck corridors are included in the national rate, weighted by commodity and origin volume. Table values may not conform exactly due to rounding.
Source: AMS Transportation Economics Division analysis of AMS Specialty Crops Program Market News data.

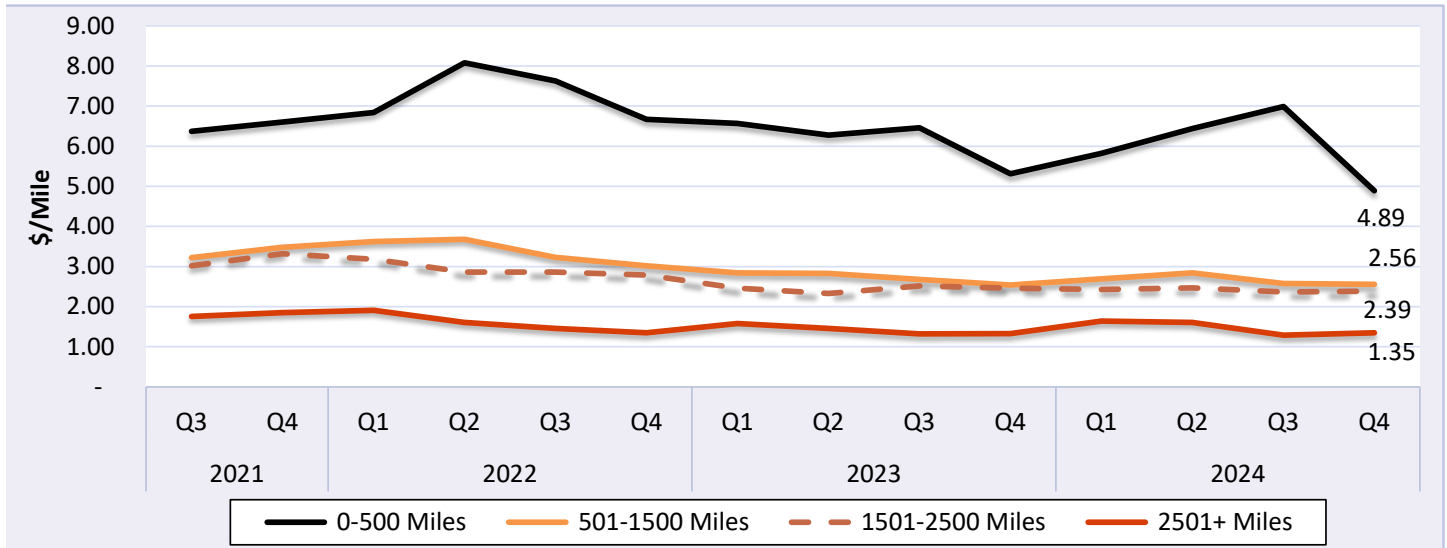
Diesel Fuel

During third quarter 2024, the U.S. diesel fuel price averaged \$3.53 per gallon—down 4 percent from the previous quarter and down 17 percent from the same quarter in 2023.



U.S. Truck Rates

Figure 1: Average Truck Rates for Select Routes (\$/Mile)



Note: The rates for 8 long-haul fruit and vegetable truck corridors are included in the national rates, weighted by commodity and origin volume.
Source: AMS Transportation Economics Division analysis of AMS Specialty Crops Program Market News data.

Table 1: Average U.S. Truck Rates for Select Routes Between 501 and 1,500 Miles (\$/Mile)

Year	1st Quarter	2nd Quarter	3rd Quarter	4th Quarter
2024	2.69	2.84	2.58	2.56
2023	2.84	2.83	2.68	2.54
2022	3.62	3.68	3.23	3.02
2021	2.92	3.56	3.22	3.48
2020	2.57	2.53	2.58	2.94
2019	2.60	2.62	2.48	2.55
2018	2.84	3.01	2.76	2.85
2017	1.85	2.43	2.47	2.57
2016	2.23	2.38	2.44	2.06
2015	2.47	2.66	2.54	2.37
2014	2.21	2.70	2.67	2.50
2013	2.25	2.63	2.65	2.29
2012	2.12	2.57	2.48	2.32

Note: The rates for 8 long-haul fruit and vegetable truck corridors are included in the national rate, weighted by commodity and origin volume. Table values may not conform exactly due to rounding.

Source: AMS Transportation Economics Division analysis of AMS Specialty Crops Program Market News data.



AGRICULTURAL REFRIGERATED TRUCK QUARTERLY

Quarter 4, 2024

Table 2: Quarterly Rates for Key Origins by Month; 501-1,500 miles (\$/Mile)

U.S. Origin	4th Quarter, 2024			3rd Quarter, 2024		
	October	November	December	July	August	September
Arizona	n/a	n/a	n/a	2.69	n/a	n/a
California	3.15	3.64	3.39	3.34	3.42	3.23
Florida	1.87	1.81	2.23	3.13	n/a	n/a
Great Lakes	4.29	4.29	4.29	4.23	4.29	4.29
Mexico-Arizona	2.75	2.99	3.29	2.64	2.68	n/a
Mexico-Texas	2.44	2.72	2.90	2.38	2.17	2.29
New York	3.18	3.18	3.18	3.18	3.18	3.18
Other	3.00	3.00	3.00	3.00	3.00	3.00
PNW	2.41	2.56	2.66	2.72	2.68	2.51

Note: "n/a" indicates rates not available.

Source: AMS Transportation Economics Division analysis of AMS Specialty Crops Program Market News data.

Truck Rates for Select Routes

Table 3: Origin-Destination Truck Rates for Select Routes, 4th Quarter 2024 (\$/Mile)

U.S. Origin	Atlanta	Baltimore	Boston	Chicago	Dallas	Los Angeles	Miami	New York	Philadelphia	Seattle
Arizona	2.93	n/a	n/a	2.51	n/a	n/a	n/a	2.78	n/a	n/a
California	2.79	2.73	2.56	2.39	3.10	12.46	2.91	2.62	2.71	n/a
Florida	2.94	1.96	2.01	1.58	n/a	n/a	n/a	2.17	1.88	n/a
Great Lakes	4.42	4.26	4.23	5.80	n/a	n/a	3.60	4.27	n/a	n/a
Mexico-Arizona	n/a	n/a	2.84	n/a	3.40	2.74	n/a	2.85	2.91	n/a
Mexico-Texas	2.95	2.69	n/a	2.39	3.60	1.91	3.05	n/a	2.65	n/a
Mid-Atlantic	2.93	8.50	4.22	1.88	n/a	n/a	n/a	6.52	6.79	n/a
New York	3.50	n/a	15.59	n/a	n/a	n/a	2.86	15.67	9.35	n/a
Other	2.95	3.20	2.90	n/a	3.05	n/a	n/a	n/a	n/a	n/a
PNW	2.70	2.72	2.76	2.58	2.58	2.53	2.64	2.78	2.76	7.09
Southeast	n/a	2.79	2.73	n/a	2.45	1.64	3.95	2.81	2.75	n/a

Note: "n/a" indicates rates not available.

Source: AMS Transportation Economics Division analysis of AMS Specialty Crops Program Market News data.



AGRICULTURAL REFRIGERATED TRUCK QUARTERLY

Quarter 4, 2024

Table 4: Origin-Destination Truck Rates for Select Routes, 4th Quarter 2024 (\$/Truck)

U.S. Origin	Atlanta	Baltimore	Boston	Chicago	Dallas	Los Angeles	Miami	New York	Philadelphia	Seattle
Arizona	6,150	n/a	n/a	5,100	n/a	n/a	n/a	7,500	n/a	n/a
California	6,129	7,482	8,191	5,095	4,621	1,452	8,295	7,659	7,656	3,462
Florida	1,000	1,952	2,809	1,618	n/a	n/a	n/a	2,548	2,064	n/a
Great Lakes	4,200	4,000	4,650	1,450	n/a	n/a	5,838	4,400	n/a	n/a
Mexico-Arizona	n/a	n/a	7,680	n/a	3,333	1,533	n/a	7,133	6,978	n/a
Mexico-Texas	3,388	4,819	n/a	3,415	1,800	3,058	4,662	n/a	5,038	n/a
Mid-Atlantic	2,050	850	1,900	1,500	n/a	n/a	n/a	1,500	950	n/a
New York	3,500	n/a	2,650	n/a	n/a	n/a	4,150	2,350	2,150	n/a
Other	4,250	5,725	6,225	n/a	2,225	n/a	n/a	n/a	n/a	n/a
PNW	6,329	6,712	7,667	4,635	4,818	2,663	7,960	7,137	7,442	993
Southeast	n/a	1,950	3,000	n/a	2,325	3,850	1,975	2,525	2,200	n/a

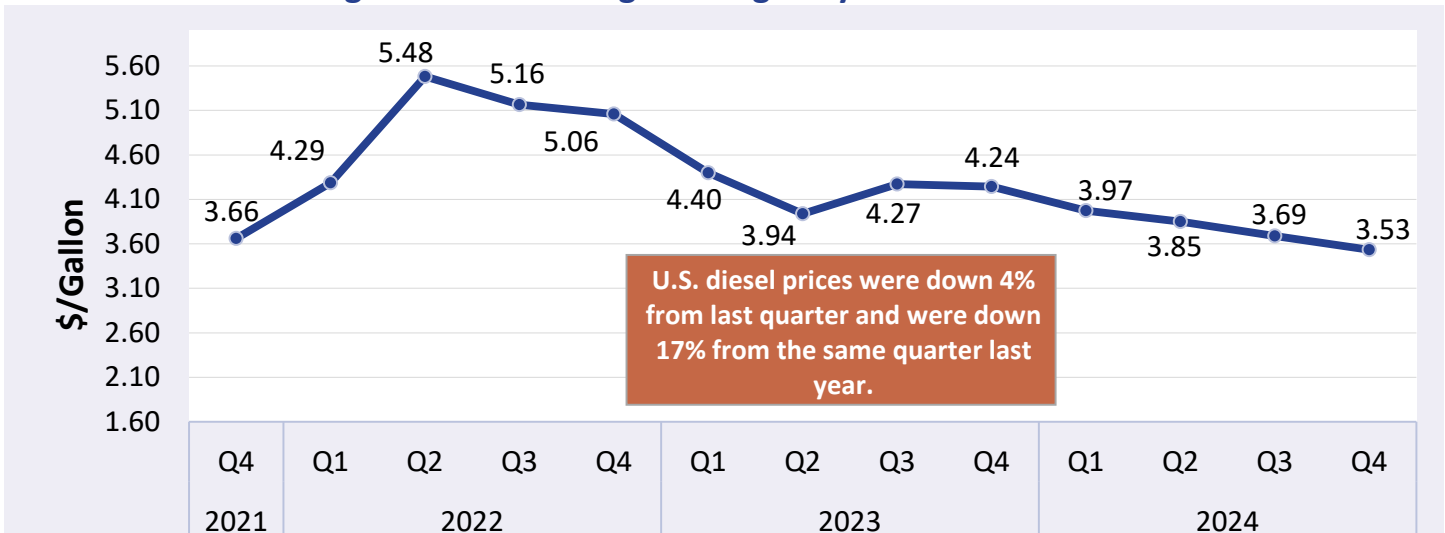
Note: "n/a" indicates rates not available.

Source: AMS Transportation Economics Division analysis of AMS Specialty Crops Program Market News data.

U.S. Diesel Fuel Prices

The diesel fuel price provides a proxy for trends in U.S. truck rates. Diesel fuel is a significant component underlying truck rates.

Figure 2: U.S. Average On-Highway Diesel Fuel Prices



Source: AMS Transportation Economics Division analysis of Energy Information Administration/U.S. Department of Energy data.



AGRICULTURAL REFRIGERATED TRUCK QUARTERLY

Quarter 4, 2024

Table 5: Average Diesel Fuel Prices (All Types)

Region	4th Quarter 2024 Price \$/Gallon	Change From Last Quarter	Change From Last Year
East Coast	3.58	-5%	-15%
California	4.66	-3%	-18%
New England	3.76	-6%	-16%
Central Atlantic	3.79	-4%	-16%
Lower Atlantic	3.48	-5%	-15%
Gulf Coast	3.20	-5%	-18%
Midwest	3.52	-4%	-16%
Rocky Mountain	3.50	-5%	-20%
West Coast Except California	3.76	-4%	-19%
U.S.	3.53	-4%	-17%

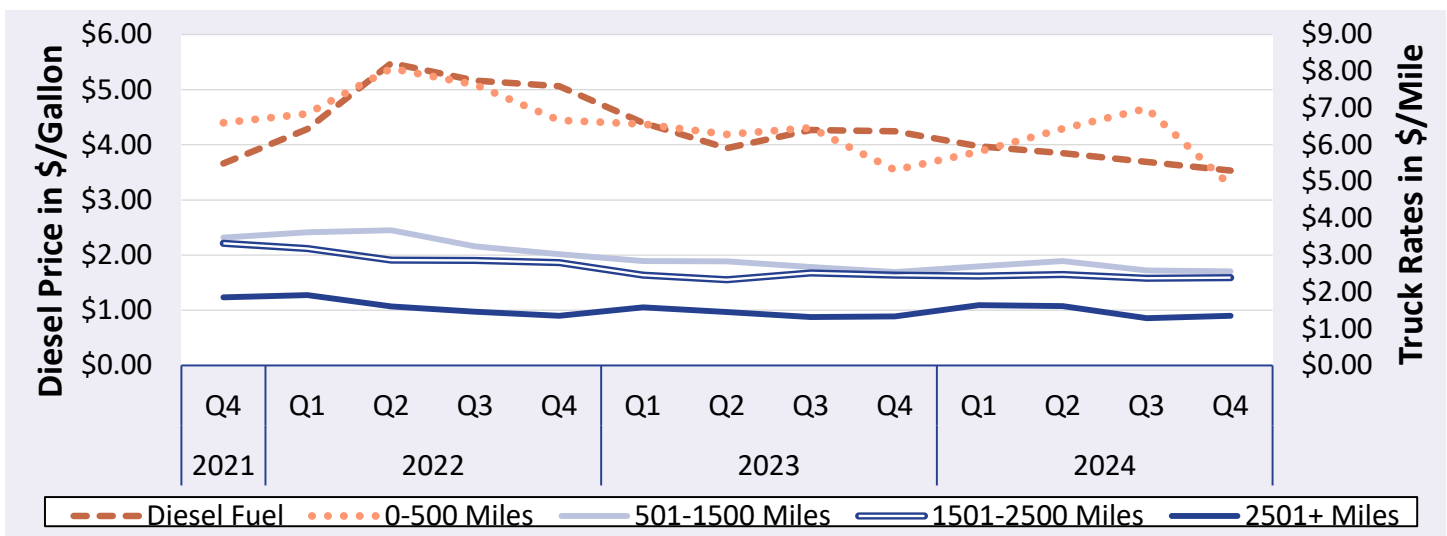
Note: Table values may not conform exactly due to rounding.

Source: AMS Transportation Economics Division analysis of Energy Information Administration/U.S. Department of Energy data.

Relationship Between Diesel Fuel and Truck Rates

The diesel fuel price provides a proxy for trends in U.S. truck rates. Diesel fuel is a significant expense for fruit and vegetable movements.

Figure 3: U.S. Average On-Highway Diesel Fuel Prices and Truck Rates



Note: The rates for 8 long-haul fruit and vegetable truck corridors are included in the national rates, weighted by origin volume.

Sources: AMS Transportation Economics Division analysis of AMS Specialty Crops Program Market News data and Energy Information Administration/U.S. Department of Energy data.



AGRICULTURAL REFRIGERATED TRUCK QUARTERLY

Quarter 4, 2024

Table 6: Average Diesel Fuel Prices and Truck Rates

Year	Quarter	Diesel Fuel (\$/gallon)	Truck Rates (\$/mile) 501-1500 miles	% Change From			
				Last Quarter		Last Year	
				Diesel	Truck	Diesel	Truck
2024	Q4	3.53	2.56	-4%	-1%	-17%	1%
	Q3	3.69	2.58	-4%	-9%	-14%	-4%
	Q2	3.85	2.84	-3%	5%	-2%	< 1%
	Q1	3.97	2.69	-6%	6%	-10%	-5%
2023	Q4	4.24	2.54	-1%	-5%	-16%	-16%
	Q3	4.27	2.68	8%	-5%	-17%	-17%
	Q2	3.94	2.83	-10%	> -1%	-28%	-23%
	Q1	4.40	2.84	-13%	-6%	3%	-22%
2022	Q4	5.06	3.02	-2%	-7%	38%	-13%
	Q3	5.16	3.23	-6%	-12%	54%	1%
	Q2	5.48	3.68	28%	2%	71%	3%
	Q1	4.29	3.62	17%	4%	48%	24%
2021	Q4	3.66	3.48	9%	8%	48%	18%

Note: Table values may not conform exactly due to rounding.

Source: AMS Transportation Economics Division analysis of AMS Specialty Crops Program Market News data and Energy Information Administration/U.S. Department of Energy data.



AGRICULTURAL REFRIGERATED TRUCK QUARTERLY

Quarter 4, 2024

Quarterly Truck Availability

Table 7: U.S. Fresh Fruit and Vegetable Truck Availability

Truck availability legend														
1=Surplus	2=Slight surplus	3=Adequate	4=Slight shortage	5=Shortage										
California, Central, And Western Arizona	Commodities	10/1	10/8	10/15	10/22	10/29	11/5	11/12	11/19	11/26	12/3	12/10	12/17	12/31
Imperial, Coachella Valleys Ca, Central And Western Az, Mexico Crossings Through Calexico And San Luis	Celery, Sweet Corn, Bell Peppers	3	3	3	3	3	3	3	3	3	3	3	3	3
Kern District California	Carrots, Grapes	3	3	3	3	3	3	3	3	3	3	3	3	3
Northern California Including San Joaquin Valley	Pears	3	3	3	3	3								
Oxnard District California	Artichokes, Brussels Sprouts, Cabbage, Celery, Cilantro, Kale Greens, Parsley, Radishes, Spinach	3	3	3	3	3	3	3	3	3	3	3	3	3
Salinas-Watsonville California	Cabbage, Green Onions, Broccoli, Cauliflower, Endive, Escarole, Kale Greens, Boston Lettuce, Green Leaf Lettuce, Iceberg Lettuce, Red Leaf Lettuce, Romaine Lettuce, Parsley, Spinach	3	3	2	2	3	3	3	3	3	3	3	3	3
San Joaquin Valley California	Green Beans, Cantaloupe, Cucumbers, Eggplant, Honeydews, Bell Peppers, Acorn Squash, Butternut Squash, Kabocha Squash, Spaghetti Squash, Tomatoes, Cherry Tomatoes, Grape Tomatoes, Plum Tomatoes, Grapes, Pomegranates, Nectarines, Peaches, Plums	3	3	3	3	3	3	3	3	3	4	4	3	5
Santa Maria California	Broccoli, Cauliflower, Celery, Cilantro, Miscellaneous Asian Vegetables, Spinach, Chinese Cabbage, Kale Greens, Green Leaf Lettuce, Iceberg Lettuce, Red Leaf Lettuce, Romaine Lettuce, Parsley	3	3	3	3	3	3	3	3	3	3	3	3	3
South And Central District California	Grapefruit, Lemons, Oranges, Grapes	3	2	2	3	3	3	3	3	3	3	3	3	3

Note: Empty cells were not reported. District and availabilities data come from the weekly Specialty Crops Truck Rate reports:

https://mymarketnews.ams.usda.gov/filerepo/reports?field_slug_id_value=2375.

Source: AMS Transportation Economics Division analysis of AMS Specialty Crops Program Market News data.



AGRICULTURAL REFRIGERATED TRUCK QUARTERLY

Quarter 4, 2024

Table 7, continued: U.S. Fresh Fruit and Vegetable Truck Availability

Truck availability legend														
1=Surplus	2=Slight surplus	3=Adequate	4=Slight shortage	5=Shortage										
Florida	Commodities	10/1	10/8	10/15	10/22	10/29	11/5	11/12	11/19	11/26	12/3	12/10	12/17	12/31
Central And South Florida	Round Green Beans, Cabbage, Sweet Corn, Cucumbers, Eggplant, Bell Peppers, Other Peppers, Radishes, Yellow Squash Crookneck/ Straightneck, Zucchini Squash, Strawberries, Tomatoes, Cherry Tomatoes, Grape Tomatoes, Plum Tomatoes								4	4	3	3	3	4
West District Florida	Tomatoes, Cherry Tomatoes, Grape Tomatoes, Plum Tomatoes		3	3	3	3	3	3	3	3				
Great Lakes (MI & WI)	Commodities	10/1	10/8	10/15	10/22	10/29	11/5	11/12	11/19	11/26	12/3	12/10	12/17	12/31
Central Wisconsin	Dry Onions, Potatoes	3	3	3	3	3	3	3	3	3	3	3	3	3
U.S.-Mexico border	Commodities	10/1	10/8	10/15	10/22	10/29	11/5	11/12	11/19	11/26	12/3	12/10	12/17	12/31
Imperial, Coachella Valleys Ca, Central And Western Az, Mexico Crossings Through Calexico And San Luis	Celery, Sweet Corn, Bell Peppers	3	3	3	3	3	3	3	3	3	3	3	3	3
Nogales, Arizona	Cantaloupe, Cucumbers, Eggplant, Honeydews, Grey Squash, Yellow Squash Straightneck, Zucchini Squash, Watermelons				3	4		3	3	4	4	4	3	5
South Texas	Asparagus, Broccoli, Carrots, Chayote, Cilantro, Cucumbers, Grapefruit, Limes, Oranges, Papaya, Anaheim Peppers, Bell Peppers, Habanero Peppers, Jalapeno Peppers, Poblano Peppers, Serrano Peppers, Pineapples, Tomatillos, Tomatoes, Grape Tomatoes, Plum Tomatoes, Watermelons	1	2	2	1	1	1	1	3	3	2	2	3	4
Pacific Northwest (ID, OR, & WA)	Commodities	10/1	10/8	10/15	10/22	10/29	11/5	11/12	11/19	11/26	12/3	12/10	12/17	12/31
Columbia Basin Washington	Dry Onions, Potatoes	3	3	3	3	3	3	3	5	5	5	5	5	5
Upper Valley, Twin Falls-Burley District Idaho	Potatoes	3	3	3	3	3	3	3	5	5	5	5	5	5
Yakima Valley And Wenatchee District, Washington	Apples, Pears, Blueberries, Peaches	3	3	3	3	3	4	4	3	4	3	3	3	3

Note: Empty cells were not reported. District and availabilities data come from the weekly Specialty Crops Truck Rate reports:

https://mymarketnews.ams.usda.gov/filerepo/reports?field_slug_id_value=2375.

Source: AMS Transportation Economics Division analysis of AMS Specialty Crops Program Market News data.

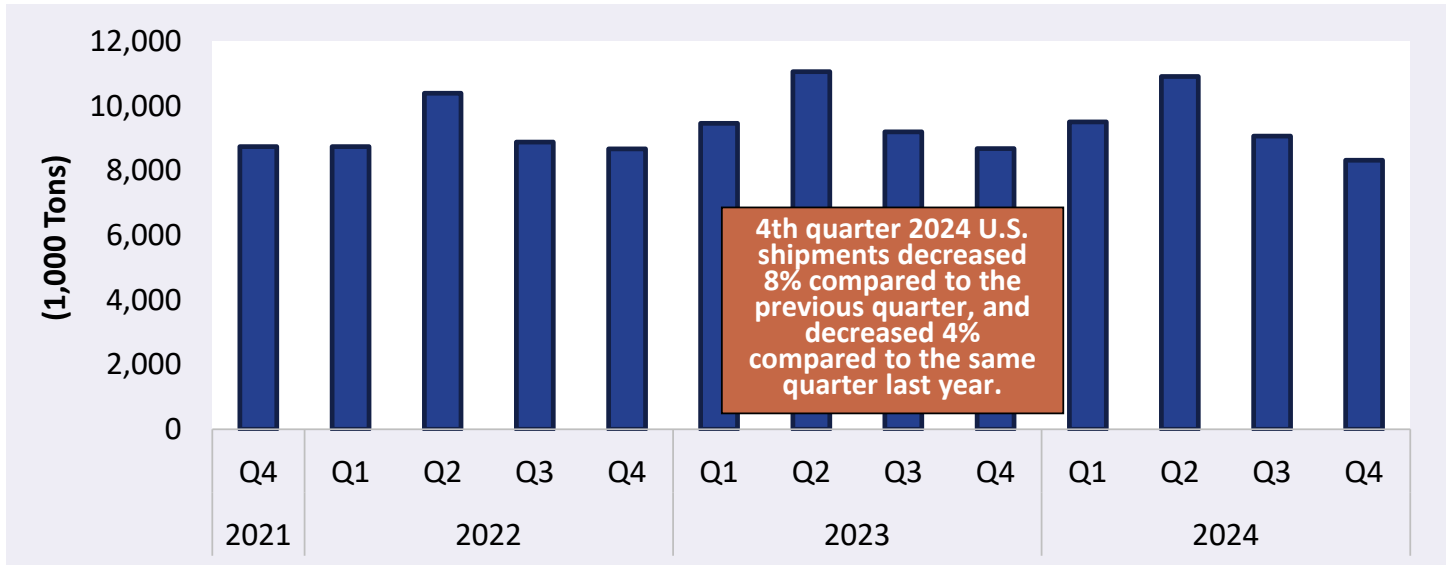


AGRICULTURAL REFRIGERATED TRUCK QUARTERLY

Quarter 4, 2024

Reported U.S. Shipments

Figure 4: Reported U.S. Fruit and Vegetable Shipments (1,000 Tons)



Source: AMS Transportation Economics Division analysis of AMS Specialty Crops Program Market News data.

Table 8: Reported U.S. Fruit and Vegetable Shipments (1,000 Tons)

Year	1st Quarter	2nd Quarter	3rd Quarter	4th Quarter	Annual
2024	9,517	10,921	9,071	8,326	37,835
2023	9,473	11,067	9,204	8,684	38,429
2022	8,751	10,404	8,891	8,678	36,724
2021	9,742	11,265	9,334	8,749	39,091
2020	9,749	10,502	8,872	8,677	37,799
2019	9,027	9,983	8,483	8,329	35,822
2018	9,019	10,463	8,581	8,139	36,202
2017	7,706	9,369	8,279	7,873	33,228
2016	7,745	9,562	8,329	7,777	33,413
2015	7,664	9,267	7,994	7,392	32,317
2014	7,300	8,859	7,827	7,249	31,236
2013	6,948	8,821	7,718	7,051	30,537
2012	7,071	8,792	7,703	7,230	30,797
2011	6,474	8,809	7,582	7,076	29,942
2010	6,532	8,739	7,845	7,070	30,187
2009	6,646	8,530	7,653	6,902	29,732
2008	6,654	8,449	7,259	6,568	28,931

Note: Table values may not conform exactly due to rounding.

Source: AMS Transportation Economics Division analysis of AMS Specialty Crops Program Market News data.



AGRICULTURAL REFRIGERATED TRUCK QUARTERLY

Quarter 4, 2024

Reported Shipments by Select Commodities

Table 9: Reported Top 10 Commodity Shipments (1,000 Tons)

Commodity	4th Quarter 2024	Previous Quarter	Same Quarter Last Year	Current Quarter as % change from:	
				Previous Qtr	Same Qtr Last Year
Potatoes	1,186	1,040	1,157	14%	3%
Apples	722	589	674	23%	7%
Onions, Dry	591	580	532	2%	11%
Cucumbers	340	340	309	> -1%	10%
Avocados	334	273	323	22%	3%
Tomatoes	311	358	356	-13%	-13%
Tomatoes, Plum Type	309	306	256	1%	21%
Grapes	298	419	255	-29%	17%
Lettuce, Iceberg	259	277	275	-7%	-6%
Lettuce, Romaine	244	237	260	3%	-6%

Note: Table values may not conform exactly due to rounding.

Source: AMS Transportation Economics Division analysis of AMS Specialty Crops Program Market News data.

Table 10: Reported Top 10 Regions (1,000 Tons)

Origin	4th Quarter 2024 Volume	% Change from Last Quarter	% Change From Same Quarter Last Year
Mexico	2,729	25%	2%
California	1,830	-38%	-15%
PNW	1,707	24%	12%
Canada	567	-4%	4%
Arizona	322	261%	-23%
Colorado	241	47%	15%
Great Lakes	233	-27%	-16%
Florida	179	-	-38%
Southeast	128	-61%	13%
New York	110	-2%	-18%

Note: The Regional Markets section of this report excludes Canada, because it lacks rate and availability data. Table values may not conform exactly due to rounding. Any "-" in the table indicates no reported shipments during the quarter or a percentage change with an at- or near-zero denominator.

Source: AMS Transportation Economics Division analysis of AMS Specialty Crops Program Market News data.



REGIONAL MARKETS

U.S.-Mexico Border

Volume

Total reported shipments of fruit and vegetables from Mexico in fourth quarter 2024 were 2.73 million tons, up 2 percent year to year. The summed volume of the top five commodities shipped from the U.S.-Mexico border increased 12 percent year to year. Four of the top five commodities show year-to-year increases. Shipments of plum tomatoes, limes, cucumbers, and avocados showed increases of 27 percent, 17 percent, 14 percent and 3 percent, respectively. Shipments of tomatoes were unchanged.

Rates

In fourth quarter 2024, truck rates for shipments between 501 miles and 1,500 miles from Arizona-Mexico border crossings averaged \$3.07 per mile—up 16 percent quarter to quarter and up 24 percent year to year. Rates for shipments between 501 miles and 1,500 miles from Texas-Mexico border crossings averaged \$2.67 per mile—up 17 percent quarter to quarter and down 5 percent year to year.

Truck Overview

Diesel fuel prices for border crossings from Arizona averaged \$3.76 per gallon—down 4 percent quarter to quarter and down 19 percent year to year. Diesel fuel prices for border crossings from Texas averaged \$3.21—down 5 percent quarter to quarter and down 18 percent year to year. Mexico crossings through Calexico and San Luis reported adequate truck availability throughout the quarter. Mexico crossings through Nogales, AZ, reported adequate truck availability in October and November, and a slight shortage in December. Mexico crossings through South Texas reported a surplus of trucks in October, a slight surplus in November and adequate availability in December.

Table 11: Reported Top Five Commodities Shipped from Mexico (1,000 tons)

Commodity	4th Quarter 2024	Share of Mexico Total	Previous Quarter	Same Quarter Last Year	Current Quarter as % change from:	
					Previous Qtr	Same Qtr Last Year
Avocados	328	12%	199	320	65%	3%
Tomatoes, Plum Type	270	10%	231	212	17%	27%
Cucumbers	249	9%	172	219	45%	14%
Limes	191	7%	196	163	-3%	17%
Tomatoes	173	6%	140	173	23%	< 1%
Top 5 Total	1,211	44%	938	1,086	29%	12%
Mexico Total	2,729	100%	2,191	2,675	25%	2%

Note: Any "-" in the table indicates no reported shipments during the quarter or a percentage change with an at- or near-zero denominator. Table values may not conform exactly due to rounding.

Source: AMS Transportation Economics Division analysis of AMS Specialty Crops Program Market News data.



AGRICULTURAL REFRIGERATED TRUCK QUARTERLY

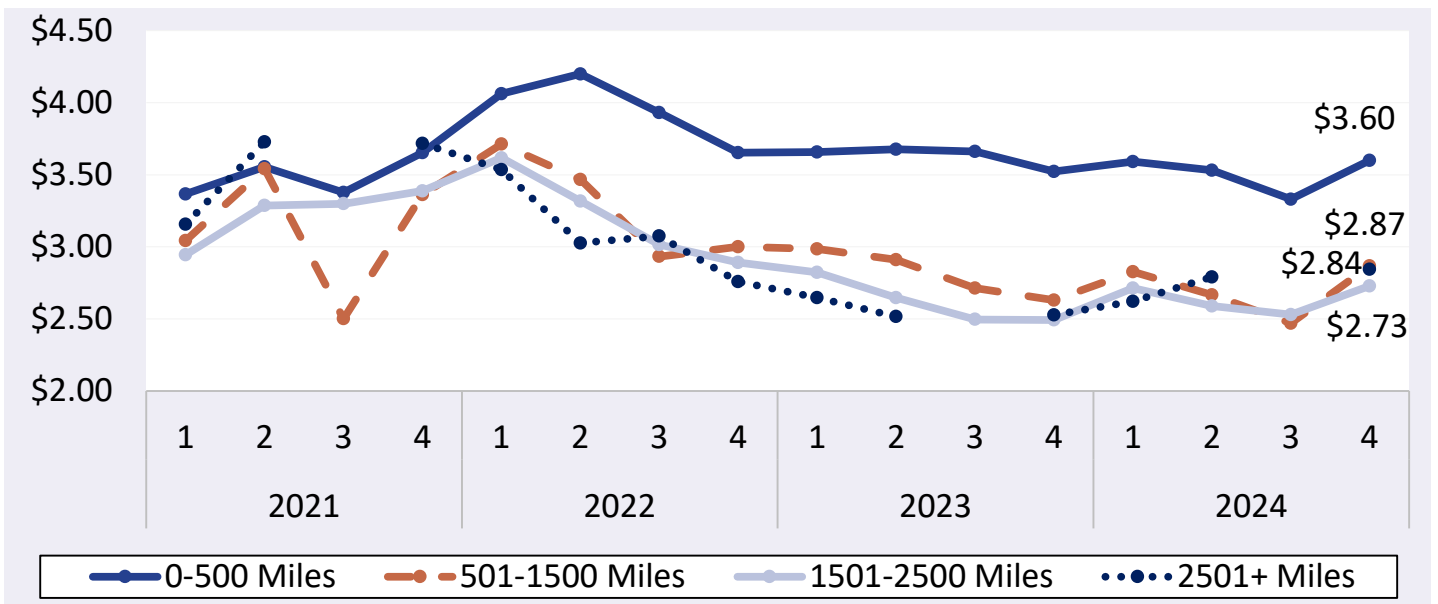
Quarter 4, 2024

Table 12: Top 5 Commodities Shipped to U.S. from Mexico by State of Entry (1,000 tons)

Texas		California		Arizona		New Mexico	
Commodity	4th Quarter 2024	Commodity	4th Quarter 2024	Commodity	4th Quarter 2024	Commodity	4th Quarter 2024
Avocados	322	Tomatoes, Plum Type	96	Cucumbers	143	Peppers, Other	48
Limes	167	Onions, Green	47	Watermelons	116	Peppers, Anaheim	30
Tomatoes, Plum Type	161	Cucumbers	33	Peppers, Bell Type	49	Peppers, Jalapeno	8
Tomatoes	127	Asparagus	23	Tomatoes	27	Watermelons	< 1
Peppers, Bell Type	79	Limes	23	Honeydews	25	Tomatillos	< 1
Mexico through TX Total	1,612	Mexico through CA Total	461	Mexico through AZ Total	566	Mexico through NM Total	11,055

Note: Table values may not conform exactly due to rounding. Any "-" in the table indicates no reported shipments during the quarter.
Source: AMS Transportation Economics Division analysis of AMS Specialty Crops Program Market News data.

Figure 5: Truck Rates from U.S.-Mexico Border (\$/Mile by Distance Traveled)



Note: Any gaps in the chart lines are the result of quarters with no reported data for the region.

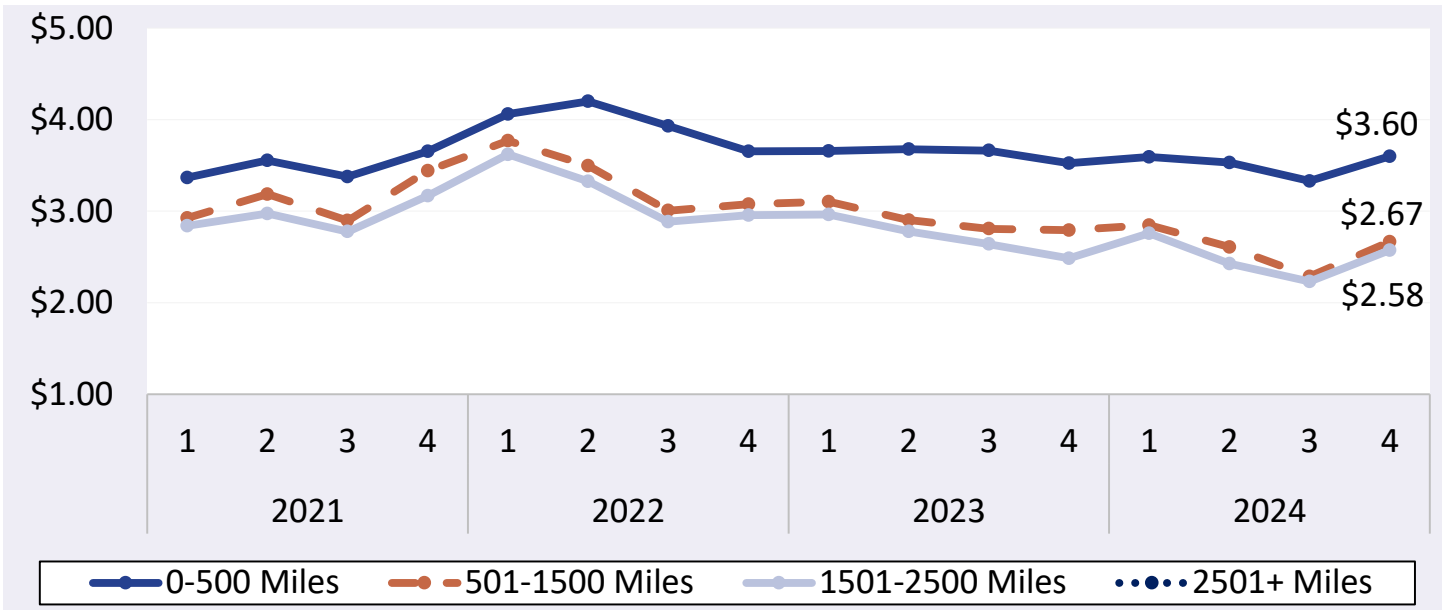
Source: AMS Transportation Economics Division analysis of AMS Specialty Crops Program Market News data.



AGRICULTURAL REFRIGERATED TRUCK QUARTERLY

Quarter 4, 2024

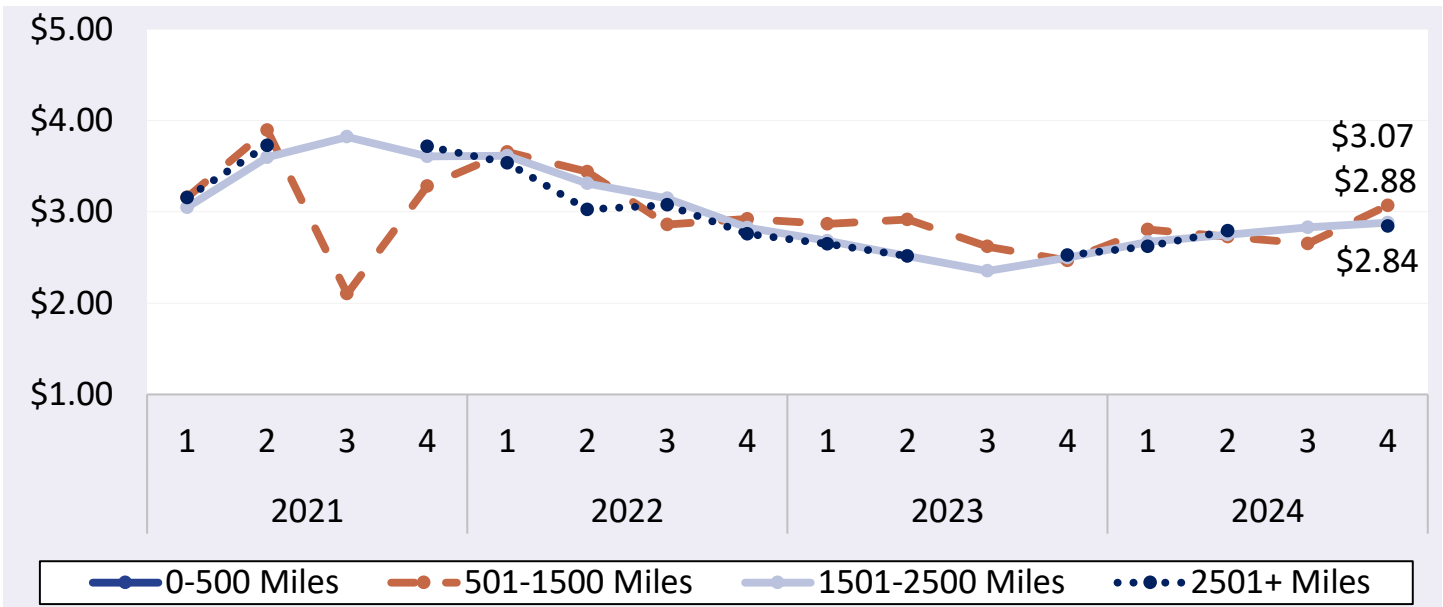
Figure 6: Texas Truck Rates from U.S.-Mexico Border (\$/Mile by Distance Traveled)



Note: Any gaps in the chart lines are the result of quarters with no reported data for the region.

Source: AMS Transportation Economics Division analysis of AMS Specialty Crops Program Market News data.

Figure 7: Arizona Truck Rates from U.S.-Mexico Border (\$/Mile by Distance Traveled)



Note: Any gaps in the chart lines are the result of quarters with no reported data for the region.

Source: AMS Transportation Economics Division analysis of AMS Specialty Crops Program Market News data.



AGRICULTURAL REFRIGERATED TRUCK QUARTERLY

Quarter 4, 2024

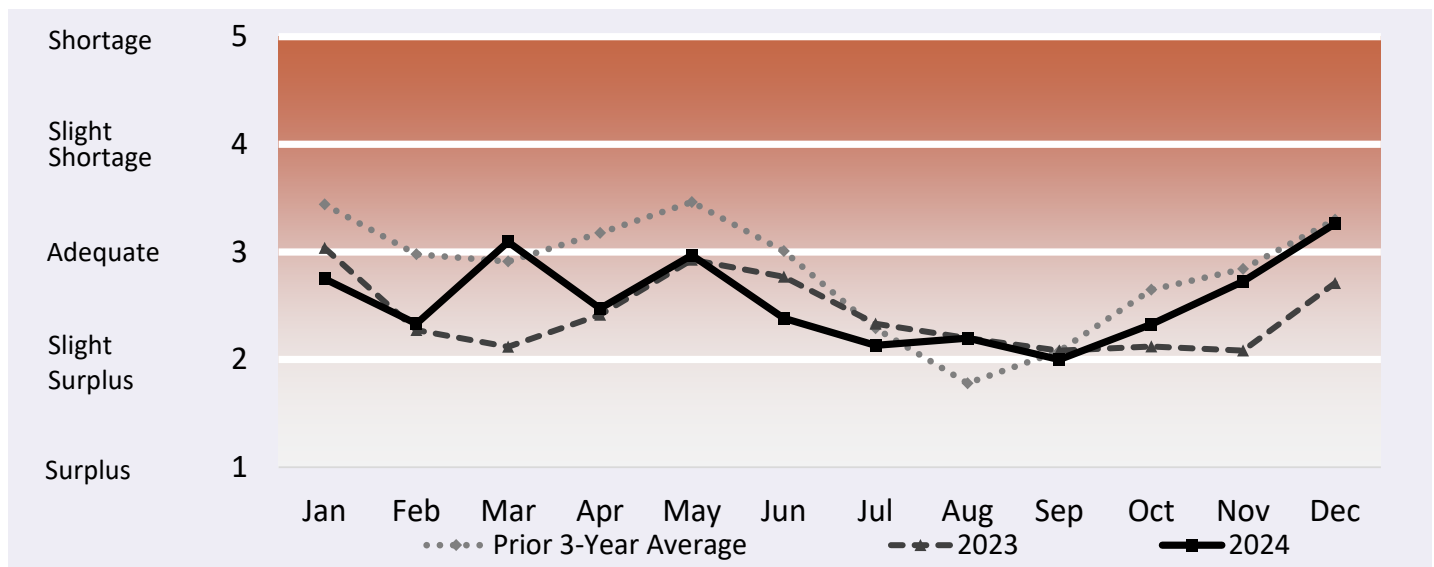
Table 13: Truck Overview from the U.S.-Mexico Border
(Availability Rating: 1=Surplus to 5=Shortage)

Region/Reporting District	October	November	December	4th Quarter
Imperial, Coachella Valleys Ca, Central And Western Az, Mexico Crossings Through Calexico And San Luis	3	3	3	3
Mexico Crossings Through Nogales, Arizona	3.25	3.38	4	3.54
Mexico Crossings Through South Texas	1.29	2	2.79	2.02
Regional Average Availability	2.51	2.79	3.26	2.86
Diesel Fuel Price (\$/gallon), through Texas	3.26	3.18	3.18	3.21
Diesel Fuel Price (\$/gallon), through Arizona	3.82	3.75	3.70	3.76

Note: AMS Specialty Crops Program defines regions by commodity, which may overlap in truck availability reporting. Table values may not conform exactly due to rounding. Any "-" in the table indicates no reported shipments during the quarter.

Source: AMS Transportation Economics Division analysis of AMS Specialty Crops Program Market News data.

Figure 8: Refrigerated Truck Availability Monthly Ratings from the U.S-Mexico Border



Note: Any gaps in the chart lines are the result of quarters with no reported data for the region.

Source: AMS Transportation Economics Division analysis of AMS Specialty Crops Program Market News data.



AGRICULTURAL REFRIGERATED TRUCK QUARTERLY

Quarter 4, 2024

California

Volume

In fourth quarter 2024, USDA reported total shipments of fruit and vegetables from California were 1.83 million tons—down 15 percent from fourth quarter 2023 (year to year). The summed volume of the top five commodities shipped from California increased 13 percent year to year. Four of the top five commodities saw year-to-year volume increases, including clementines (up 36 percent); grapes (up 17 percent); celery (up 5 percent); and strawberries (up 3 percent). Shipments of iceberg lettuce decreased 5 percent.

Rates

The quarterly average truck rate for shipments between 501 miles and 1,500 miles was \$3.38 per mile—up 1 percent quarter to quarter and up 17 percent year to year.

Truck Overview

Diesel fuel prices averaged \$4.66 per gallon—down 3 percent quarter to quarter and down 18 percent year to year. All districts reported adequate truck availability throughout the quarter.

Table 14: Reported Top Five Commodities Shipped from California (1,000 tons)

Commodity	4th Quarter 2024	Share of California Total	Previous Quarter	Same Quarter Last Year	Current Quarter as % change from:	
					Previous Qtr	Same Qtr Last Year
Grapes	298	16%	408	255	-27%	17%
Clementines	234	13%	-	172	-	36%
Celery	181	10%	124	172	46%	5%
Strawberries	158	9%	332	153	-52%	3%
Lettuce, Iceberg	125	7%	258	132	-52%	-5%
Top 5 Total	995	54%	1,122	883	-11%	13%
California Total	1,830	100%	2,965	2,161	-38%	-15%

Note: Any "-" in the table indicates no reported shipments during the quarter or a percentage change with an at- or near-zero denominator. Table values may not conform exactly due to rounding.

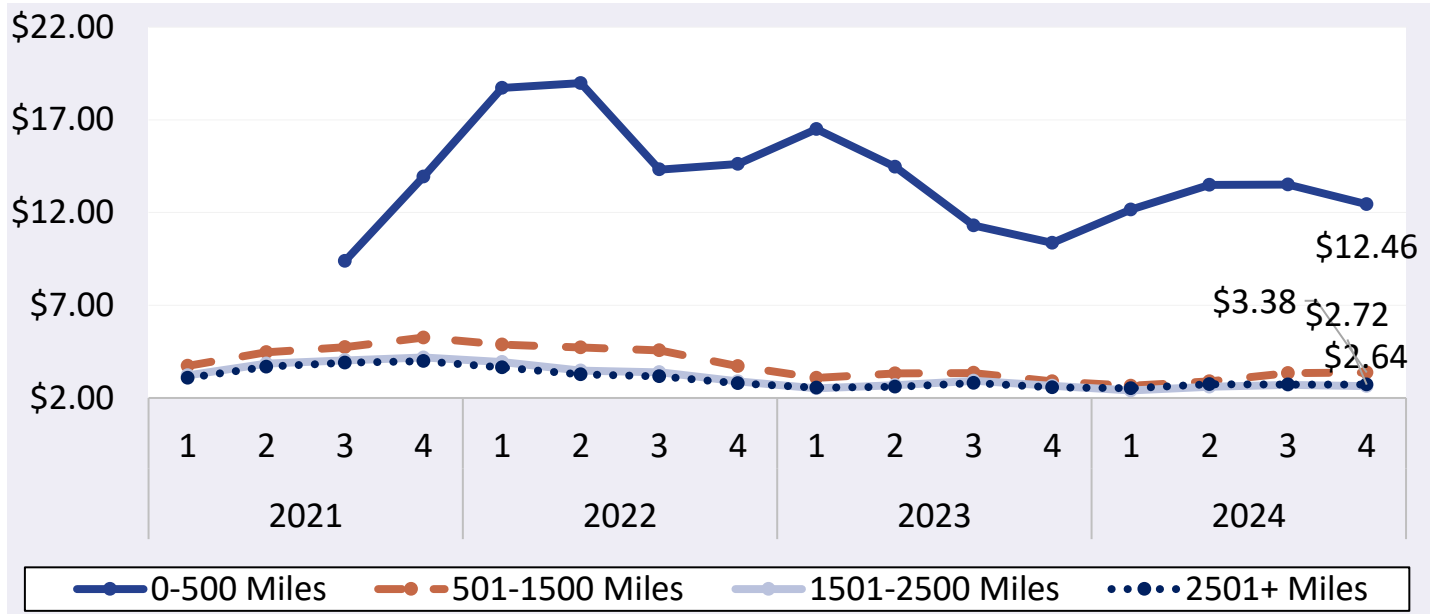
Source: AMS Transportation Economics Division analysis of AMS Specialty Crops Program Market News data.



AGRICULTURAL REFRIGERATED TRUCK QUARTERLY

Quarter 4, 2024

Figure 9: California Truck Rates (\$/Mile by Distance Travelled)



Note: Any gaps in the chart lines are the result of quarters with no reported data for the region.

Source: AMS Transportation Economics Division analysis of AMS Specialty Crops Program Market News data.

Table 15: California Truck Overview (Availability Rating: 1=Surplus to 5=Shortage)

Region/Reporting District	October	November	December	4th Quarter
Kern District California	3	3	3	3
Northern California Including San Joaquin Valley	3	-	-	3
Oxnard District California	3	3	3	3
Salinas-Watsonville California	2.71	3	3	2.90
San Joaquin Valley California	3	3	3.21	3.07
Santa Maria California	2.83	2.88	2.88	2.86
South And Central District California	2.6	3	3	2.87
Regional Average Availability	2.88	2.98	3.01	2.96
Diesel Fuel Price (\$/gallon)	4.71	4.67	4.61	4.66

Note: AMS Specialty Crops Program defines regions by commodity, which may overlap in truck availability reporting. Table values may not conform exactly due to rounding. Any "-" in the table indicates no reported shipments during the quarter.

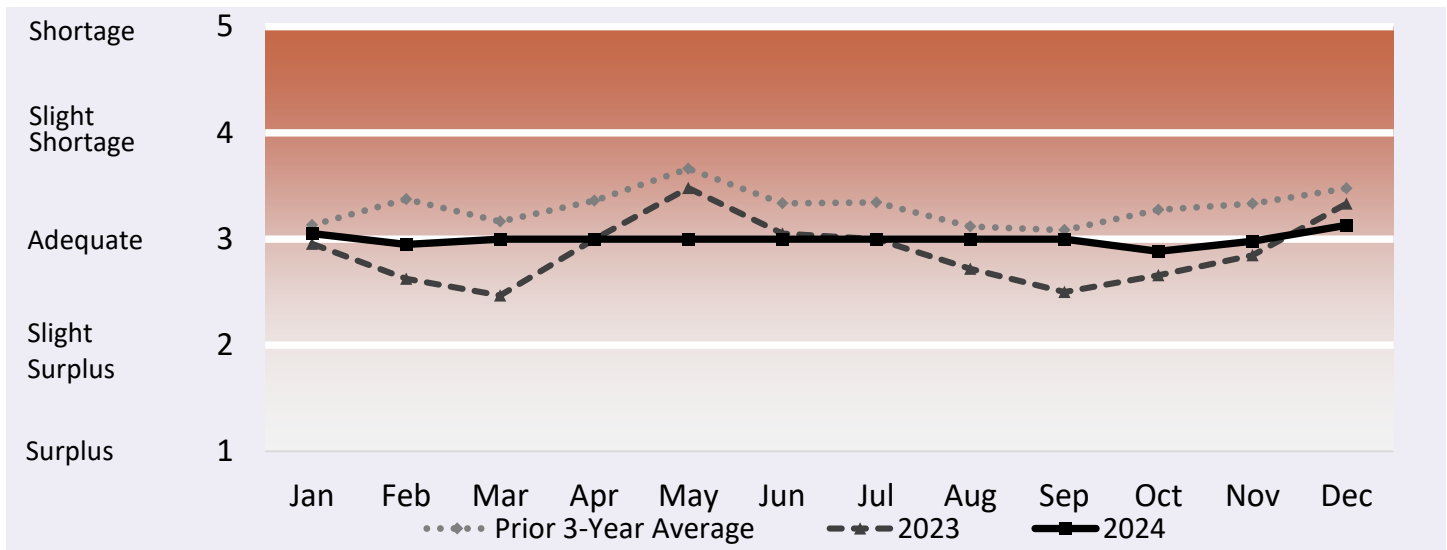
Source: AMS Transportation Economics Division analysis of AMS Specialty Crops Program Market News data.



AGRICULTURAL REFRIGERATED TRUCK QUARTERLY

Quarter 4, 2024

Figure 10: Refrigerated Truck Availability Monthly Ratings for California



Note: Any gaps in the chart lines are the result of quarters with no reported data for the region.

Source: AMS Transportation Economics Division analysis of AMS Specialty Crops Program Market News data.



AGRICULTURAL REFRIGERATED TRUCK QUARTERLY

Quarter 4, 2024

PNW

Volume

In fourth quarter 2024, total reported shipments of fruit and vegetables from PNW were 1.71 million tons, up 12 percent year to year. The summed volume of the top five commodities shipped from PNW also increased 12 percent year to year. Three of the top five commodities saw year-to-year volume increases, including dry onions (up 15 percent); potatoes (up 14 percent); and apples (up 12 percent). Shipments of pears decreased 8 percent.

Rates

The quarterly average truck rate for shipments between 501 miles and 1,500 miles was \$2.53 per mile—down 4 percent quarter to quarter and down 14 percent year to year.

Truck Overview

Diesel fuel prices averaged \$3.76 per gallon—down 4 percent quarter to quarter and down 19 percent year to year. All districts reported adequate availability in October and a slight shortage in November. Columbia Basin and Upper Valley both reported a shortage in December, while Yakima Valley reported adequate availability in December.

Table 16: Reported Top Five Commodities Shipped from PNW (1,000 tons)

Commodity	4th Quarter 2024	Share of PNW Total	Previous Quarter	Same Quarter Last Year	Current Quarter as % change from:	
					Previous Qtr	Same Qtr Last Year
Apples	571	33%	490	512	16%	12%
Potatoes	534	31%	504	467	6%	14%
Onions, Dry	476	28%	236	414	101%	15%
Pears	125	7%	27	136	369%	-8%
Blueberries	< 1	< 1%	34	-	-99%	-
Top 5 Total	1,707	100%	1,291	1,529	32%	12%
PNW Total	1,707	100%	1,381	1,529	24%	12%

Note: Any "-" in the table indicates no reported shipments during the quarter or a percentage change with an at- or near-zero denominator. Table values may not conform exactly due to rounding.

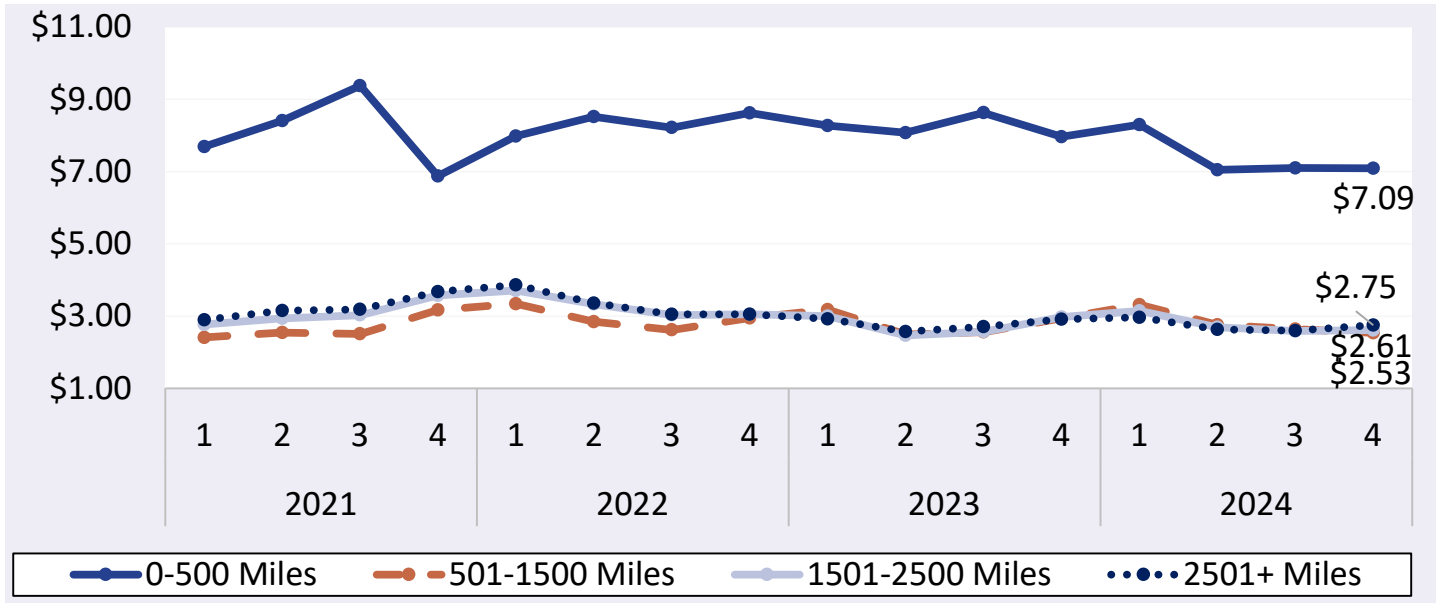
Source: AMS Transportation Economics Division analysis of AMS Specialty Crops Program Market News data.



AGRICULTURAL REFRIGERATED TRUCK QUARTERLY

Quarter 4, 2024

Figure 11: PNW Truck Rates (\$/Mile by Distance Travelled)



Note: Any gaps in the chart lines are the result of quarters with no reported data for the region.

Source: AMS Transportation Economics Division analysis of AMS Specialty Crops Program Market News data.

Table 17: PNW Truck Overview (Availability Rating: 1=Surplus to 5=Shortage)

Region/Reporting District	October	November	December	4th Quarter
Columbia Basin Washington	3	4	5	4
Upper Valley, Twin Falls-Burley District Idaho	3	4	5	4
Yakima Valley And Wenatchee District, Washington	3	3.75	3	3.25
Regional Average Availability	3	3.92	4.33	3.75
Diesel Fuel Price (\$/gallon)	3.82	3.75	3.70	3.76

Note: AMS Specialty Crops Program defines regions by commodity, which may overlap in truck availability reporting. Table values may not conform exactly due to rounding. Any "-" in the table indicates no reported shipments during the quarter.

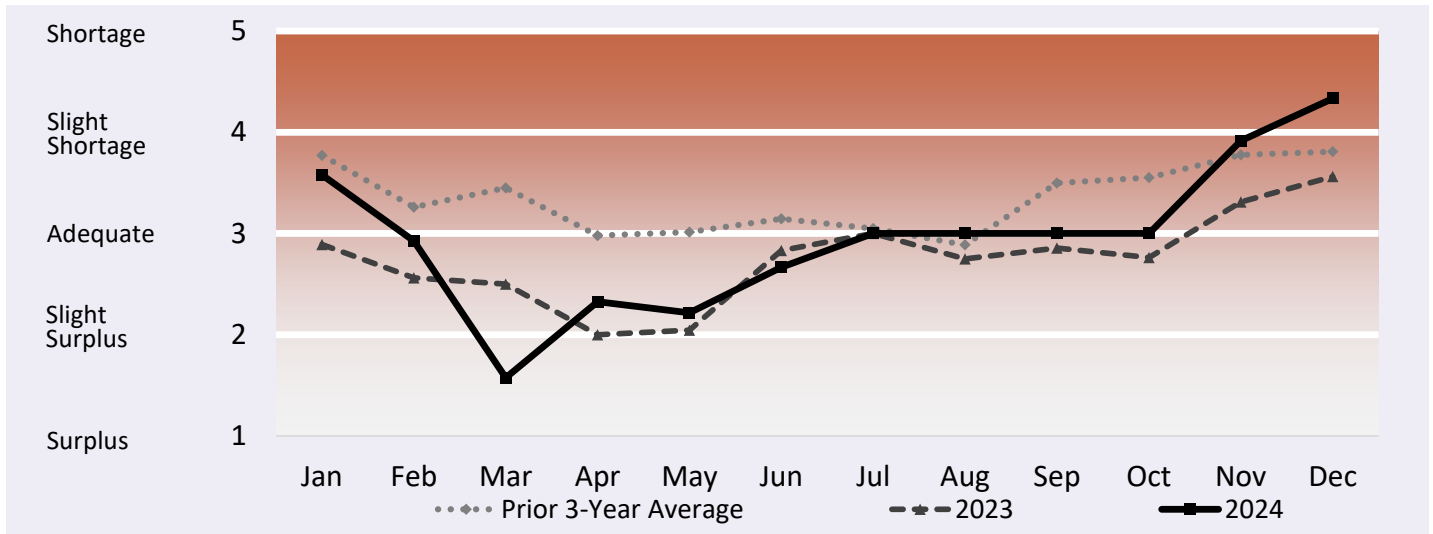
Source: AMS Transportation Economics Division analysis of AMS Specialty Crops Program Market News data.



AGRICULTURAL REFRIGERATED TRUCK QUARTERLY

Quarter 4, 2024

Figure 12: Refrigerated Truck Availability Monthly Ratings for PNW



Note: Any gaps in the chart lines are the result of quarters with no reported data for the region.

Source: AMS Transportation Economics Division analysis of AMS Specialty Crops Program Market News data.



AGRICULTURAL REFRIGERATED TRUCK QUARTERLY

Quarter 4, 2024

Arizona

Volume

During fourth quarter 2024, total reported shipments of fruit and vegetables from Arizona were 322,000 tons—down 23 percent from fourth quarter 2023. The summed volume of the top five commodities shipped from Arizona also decreased 9 percent year to year. Four of the top five commodities saw year-to-year volume decreases in the fourth quarter, including broccoli (down 35 percent); green leaf lettuce (down 19 percent); romaine lettuce (down 12 percent) and iceberg lettuce (down 7 percent). Shipments of cantaloupes increased 10 percent.

Rates

There were no rates reported for Arizona for shipments between 501 miles and 1,500 miles in the fourth quarter. The quarterly average truck rate for shipments between 1,501 and 2,500 miles was \$2.72—down 1 percent quarter to quarter and down 1 percent year to year.

Truck Overview

Diesel fuel prices averaged \$3.76 per gallon—down 4 percent quarter to quarter and down 19 percent year to year. Mexico crossings through Calexico and San Luis reported adequate truck availability throughout the quarter.

Table 18: Reported Top Five Commodities Shipped from Arizona (1,000 tons)

Commodity	4th Quarter 2024	Share of Arizona Total	Previous Quarter	Same Quarter Last Year	Current Quarter as % change from:	
					Previous Qtr	Same Qtr Last Year
Lettuce, Iceberg	108	34%	-	117	-	-7%
Lettuce, Romaine	101	31%	-	114	-	-12%
Cantaloupes	41	13%	33	37	26%	10%
Broccoli	11	4%	-	17	-	-35%
Lettuce, Green Leaf	11	3%	-	13	-	-19%
Top 5 Total	272	84%	33	299	734%	-9%
Arizona Total	322	100%	89	418	261%	-23%

Note: Any "-" in the table indicates no reported shipments during the quarter or a percentage change with an at- or near-zero denominator. Table values may not conform exactly due to rounding.

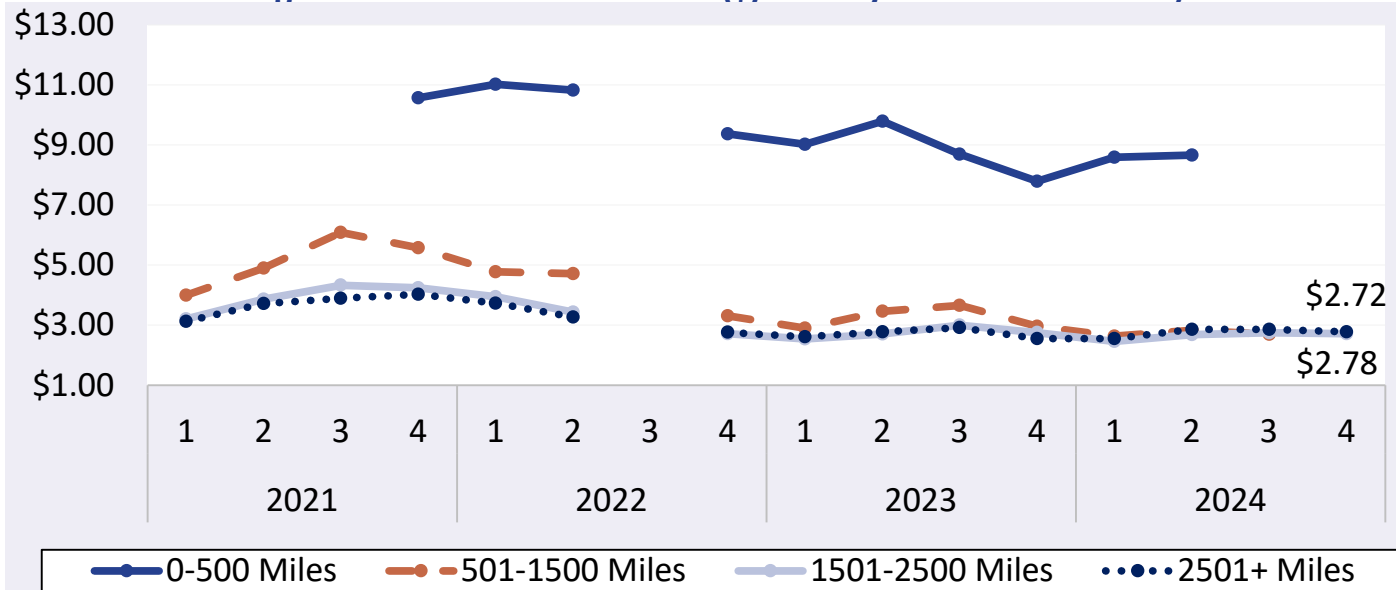
Source: AMS Transportation Economics Division analysis of AMS Specialty Crops Program Market News data.



AGRICULTURAL REFRIGERATED TRUCK QUARTERLY

Quarter 4, 2024

Figure 13: Arizona Truck Rates (\$/Mile by Distance Travelled)



Note: Any gaps in the chart lines are the result of quarters with no reported data for the region.

Source: AMS Transportation Economics Division analysis of AMS Specialty Crops Program Market News data.

Table 19: Arizona Truck Overview (Availability Rating: 1=Surplus to 5=Shortage)

Region/Reporting District	October	November	December	4th Quarter
Imperial, Coachella Valleys Ca, Central And Western Az, Mexico Crossings Through Calexico And San Luis	3	3	3	3
Regional Average Availability	3	3	3	3
Diesel Fuel Price (\$/gallon)	3.82	3.75	3.70	3.76

Note: AMS Specialty Crops Program defines regions by commodity, which may overlap in truck availability reporting. Table values may not conform exactly due to rounding. Any "-" in the table indicates no reported shipments during the quarter.

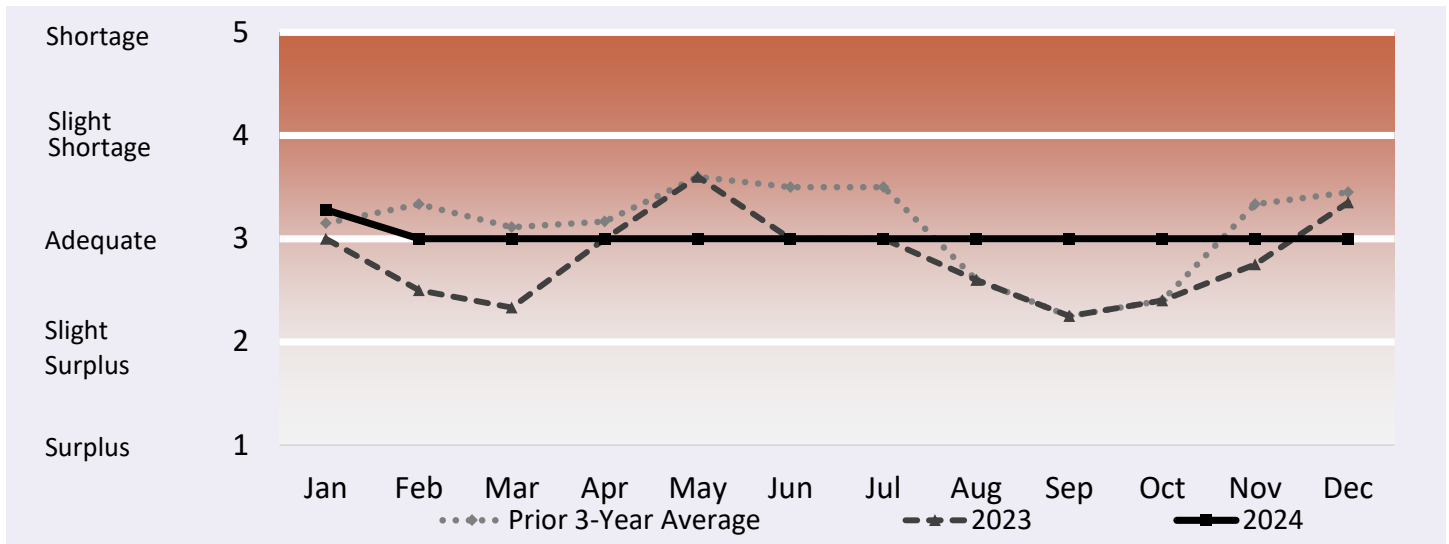
Source: AMS Transportation Economics Division analysis of AMS Specialty Crops Program Market News data.



AGRICULTURAL REFRIGERATED TRUCK QUARTERLY

Quarter 4, 2024

Figure 14: Refrigerated Truck Availability Monthly Ratings for Arizona



Note: Any gaps in the chart lines are the result of quarters with no reported data for the region.

Source: AMS Transportation Economics Division analysis of AMS Specialty Crops Program Market News data.



AGRICULTURAL REFRIGERATED TRUCK QUARTERLY

Quarter 4, 2024

Great Lakes

Volume

During fourth quarter 2024, total reported shipments of fruit and vegetables from the Great Lakes were 233,000 tons—down 16 percent from third quarter 2024. The summed volume of the top five commodities shipped from the Great Lakes also decreased 14 percent year to year. Three of the top five commodities saw year-to-year volume decreases in the fourth quarter, including dry onions (down 34 percent); potatoes (down 15 percent); and apples (down 6 percent). Shipments of cabbage increased 28 percent, and shipments of bell peppers increased 12 percent.

Rates

The quarterly average truck rate for shipments between 501 miles and 1,500 miles was \$4.29 per mile—up 1 percent quarter to quarter and up 6 percent year to year.

Truck Overview

Diesel fuel prices averaged \$3.52 per gallon—down 4 percent quarter to quarter and down 16 percent year to year. The Central Wisconsin district reported adequate availability throughout the quarter.

Table 20: Reported Top Five Commodities Shipped from Great Lakes (1,000 tons)

Commodity	4th Quarter 2024	Share of Great Lakes Total	Previous Quarter	Same Quarter Last Year	Current Quarter as % change from:	
					Previous Qtr	Same Qtr Last Year
Potatoes	168	72%	140	198	20%	-15%
Apples	48	21%	36	51	33%	-6%
Onions, Dry	9	4%	1	13	471%	-34%
Peppers, Bell Type	3	1%	19	2	-86%	12%
Cabbage	3	1%	9	2	-72%	28%
Top 5 Total	230	99%	206	267	11%	-14%
Great Lakes Total	233	100%	319	278	-27%	-16%

Note: Any "-" in the table indicates no reported shipments during the quarter or a percentage change with an at- or near-zero denominator. Table values may not conform exactly due to rounding.

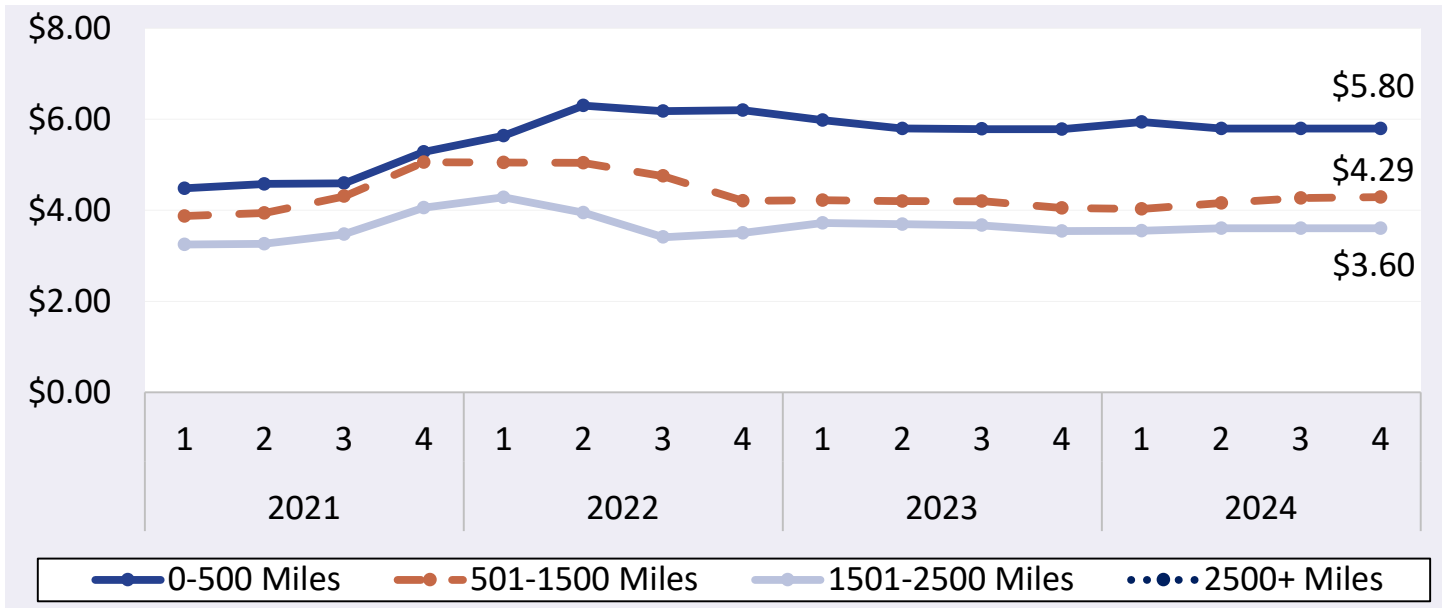
Source: AMS Transportation Economics Division analysis of AMS Specialty Crops Program Market News data.



AGRICULTURAL REFRIGERATED TRUCK QUARTERLY

Quarter 4, 2024

Figure 15: Great Lakes Truck Rates (\$/Mile by Distance Travelled)



Note: Any gaps in the chart lines are the result of quarters with no reported data for the region.

Source: AMS Transportation Economics Division analysis of AMS Specialty Crops Program Market News data.

Table 21: Great Lakes Truck Overview (Availability Rating: 1=Surplus to 5=Shortage)

Region/Reporting District	October	November	December	4th Quarter
Central Wisconsin	3	3	3	3
Regional Average Availability	3	3	3	3
Diesel Fuel Price (\$/gallon)	3.59	3.51	3.46	3.52

Note: AMS Specialty Crops Program defines regions by commodity, which may overlap in truck availability reporting. Table values may not conform exactly due to rounding. Any "-" in the table indicates no reported shipments during the quarter.

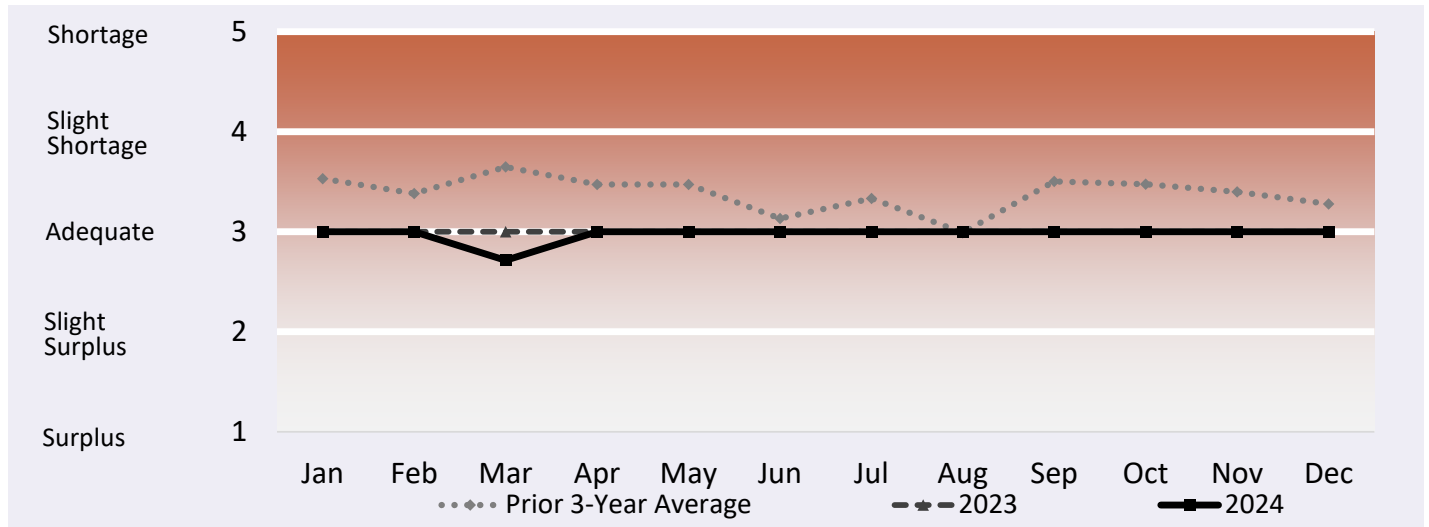
Source: AMS Transportation Economics Division analysis of AMS Specialty Crops Program Market News data.



AGRICULTURAL REFRIGERATED TRUCK QUARTERLY

Quarter 4, 2024

Figure 16: Refrigerated Truck Availability Monthly Ratings for Great Lakes



Source: AMS Transportation Economics Division analysis of AMS Specialty Crops Program Market News data.
Any gaps in the chart lines are the result of quarters with no reported data for the region.



ADDITIONAL INFORMATION

Terms and References

Data Reporting and Publication Window

The publication date of each Agricultural Refrigerated Truck Quarterly (AgRTQ) depends on the timing of data reporting. Reporting of truck shipments in some regions can be delayed 2-3 months past their respective quarter. We publish the AgRTQ one month after that lag in order to capture a more complete picture of truck shipments during the quarter.

Data Sources

This information is compiled from the weekly Specialty Crops Truck Rate Report by USDA, Agricultural Marketing Service (AMS), Specialty Crops Program, Market News Division. The website is:

<https://www.marketnews.usda.gov/mnp/fv-home>.

Regional Markets

For the regional markets, some States are grouped into producing regions. The Pacific Northwest region includes Idaho, Oregon, and Washington. The Great Lakes region includes Michigan, Minnesota, and Wisconsin. The Southeast region includes North Carolina, South Carolina and Georgia.

Shipment Volumes

Truck shipments for all commodities and origins are not available. Those obtainable are reported, but should not be interpreted as representing complete movements of a commodity. Truck shipments from all States are collected at shipping points and include both interstate and intrastate movements. They are obtained from various sources, including Federal marketing orders, administrative committees, Federal State Inspection Service, and shippers. Volume amounts are represented in 10,000 pound units, or 1,000 10-lb packages but are converted to 1,000 tons for this report. Mexican border crossings through Arizona and Texas data is obtained from the Department of Homeland Security (DHS), U.S. Customs and Border and Protection (CBP) through USDA, AMS, Market News.

Rates

This information is compiled from the weekly Specialty Crops Truck Rate Report. Rates quoted represent open (spot) market rates that shippers or receivers pay depending on basis of sale, per load, including truck brokers fees for shipments in truck load volume to a single destination. Extra charges for delivery to terminal markets, multipickup and multidrop shipments are not included unless otherwise stated. Rates are based on the most usual loads in 48-53 foot trailers from the origin shipping area to the destination receiving city. In areas where rates are based on package rates, per load rates were derived by multiplying the package rate by the number of packages in the most usual load in a 48-53 foot trailer. Slightly cheaper rates will be reported during Quarters 2 and 3 as about 50 percent of onion shipments from California are hauled on open flatbed trailers. During Quarter 3, less than 20 percent of onions hauled from Washington, Idaho, and Oregon are on open flatbeds.

Regional Rates

Rate data for 10 destination markets are used to calculate average origin regional rates.

National Rates

The national rates reflect the average of the regional rates, separated by mileage category and weighted by volume between origin and destination.



Contact Us

Authors

Kranti Mulik, Analyst

Kranti.Mulik@usda.gov, 202.756.2577

Peter Caffarelli, Analyst

PeterA.Caffarelli@usda.gov, 202.690.3244

Jesse Gastelle, Analyst

Jesse.Gastelle@usda.gov, 202.690.1144

Patty Willkie, Specialty Crops Program and Market News Division Data

Patty.Willkie@usda.gov, 202.720.2175

Please sign up by entering your email address at the following link and selecting your preference to receive Transportation Research and Analysis:

https://public.govdelivery.com/accounts/USDAAMS/subscriber/new?topic_id=USDAAMS_177

For assistance with accessibility issues related to this document, please e-mail SharonC.Williams@usda.gov.

Related Websites

USDA's Agricultural Transportation Open Data Platform

<https://agtransport.usda.gov/>

Specialty Crops Program

<https://www.ams.usda.gov/about-ams/programs-offices/specialty-crops-program>

Specialty Crops Truck Rate Report

https://mymarketnews.ams.usda.gov/filerepo/reports?field_slug_id_value=2375

Specialty Crops Movement Reporting

<https://www.marketnews.usda.gov/mnp/fv-report-config-step1?type=movement>

Economic Research Service Vegetable and Pulses

<https://www.ers.usda.gov/topics/crops/vegetables-pulses/>

Economic Research Service Fruit and Tree Nuts

<https://www.ers.usda.gov/topics/crops/fruit-tree-nuts.aspx>

National Agricultural Statistics Service, Crops

https://www.nass.usda.gov/Statistics_by_Subject/index.php?sector=CROPS

Refrigerated Truck Quarterly Datasets

<https://www.ams.usda.gov/services/transportation-analysis/agricultural-refrigerated-truck-quarterly-datasets>

Protecting Perishable Foods During Transport by Truck and Rail

<https://edis.ifas.ufl.edu/pdffiles/HS/HS132800.pdf>

Preferred Citation

U.S. Department of Agriculture, Agricultural Marketing Service. *Agricultural Refrigerated Truck Quarterly Report*. June 2025 Web. <<https://dx.doi.org/10.9752/TS051.06-2025>>

Photo Credit

Burt Barnes

USDA is an equal opportunity provider, employer, and lender.

www.ams.usda.gov/services/transportation-analysis/agrtq