



# Agricultural Refrigerated Truck Quarterly

a quarterly publication of the Agricultural Marketing Service

## CONTENTS

National Summary.....	2	Quarterly Truck Availability.....	8	PNW .....	19
Quarterly Overview .....	2	Reported U.S. Shipments .....	10	Florida .....	22
U.S. Truck Rates .....	3	Reported Shipments by Select		Southeast.....	25
Truck Rates for Select Routes.....	4	Commodities.....	11	Additional Information .....	28
U.S. Diesel Fuel Prices .....	5	Regional Markets.....	12	Terms and References.....	28
Relationship Between Diesel Fuel and		U.S. Mexico Border .....	12	Contact Us.....	29
Truck Rates.....	6	California.....	16		



# NATIONAL SUMMARY

## Quarterly Overview

### Fruit and Vegetable Shipments

USDA reported second quarter 2025 U.S. truck shipments of fresh produce were 9.33 million tons—up 8 percent from the previous quarter and down 15 percent from second quarter 2024.

Also, in second quarter 2025, shipments from Mexico were 3.55 million tons—the highest reported volume from any origin. Shipments from Mexico accounted for 38 percent of the total reported shipments of fresh fruit and vegetables. Shipments from the next five top regions by volume were as follows: California, 1.82 million tons (20 percent of the total); Pacific Northwest (PNW), 1.30 million tons (14 percent of the total); Florida, 780,000 tons (8 percent of the total); and finally, Southeast, 465,000 tons (5 percent of the total).

These top five commodities accounted for 41 percent of reported truck movements in second quarter 2025:

- ▶ Watermelons (12 percent)
- ▶ Potatoes (11 percent)
- ▶ Dry onions (7 percent)
- ▶ Apples (6 percent)
- ▶ Strawberries (5 percent)

### Truck Rates

The table below provides a snapshot of quarterly truck rates for U.S. produce shipments over four mileage categories—1-500; 501-1,500; 1,501-2,500; and 2,501+ miles. Please note the average U.S. truck rates provided below were calculated using weighted regional rates and volumes.

Average U.S. Truck Rates for Select Routes Between 501 and 1,500 Miles (\$/Mile)

	0-500 miles	501-1,500 miles	1,501-2,500 miles	2,501+ miles
Q2 2024	6.44	2.84	2.47	1.61
Q3 2024	6.99	2.58	2.37	1.29
Q4 2024	4.88	2.56	2.39	1.35
Q1 2025	2.92	2.30	2.41	1.50
Q2 2025	1.90	2.60	2.26	1.36
Q2 Change from Previous Quarter	-35%	13%	-6%	-9%
Q2 Change from Same Quarter Last Year	-70%	-8%	-9%	-16%

Note: The rates for 8 long-haul fruit and vegetable truck corridors are included in the national rate, weighted by commodity and origin volume. Table values may not conform exactly due to rounding.

Source: AMS Transportation Economics Division analysis of AMS Specialty Crops Program Market News data.

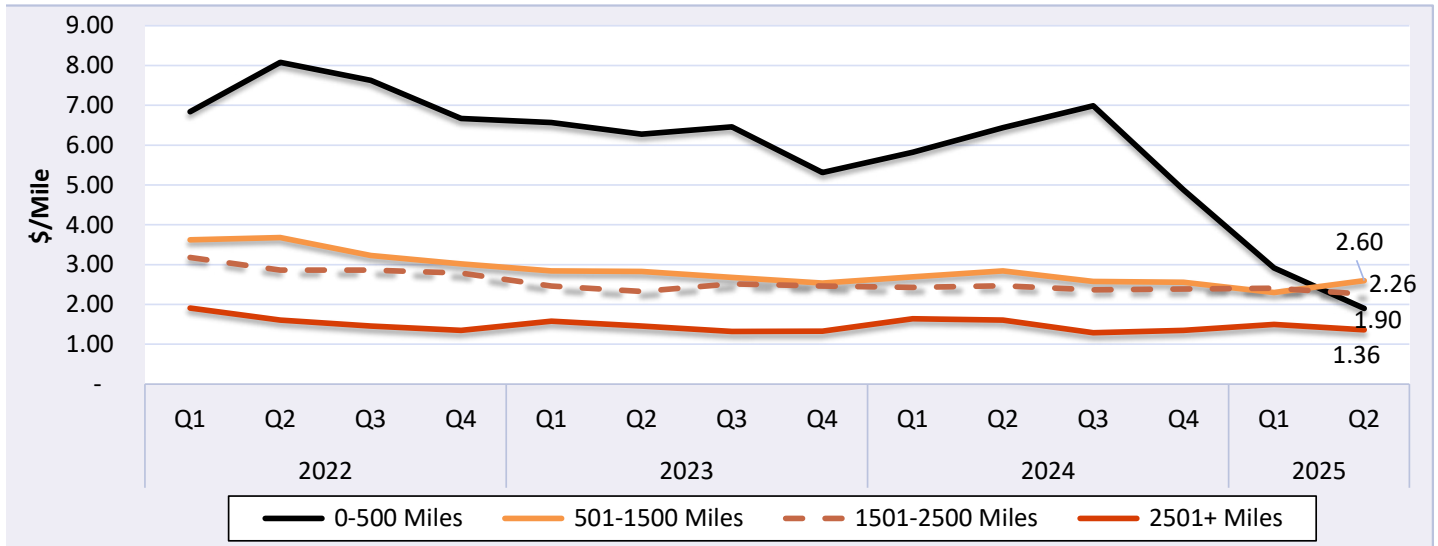
### Diesel Fuel

During second quarter 2025, the U.S. diesel fuel price averaged \$3.56 per gallon—down 2 percent from the previous quarter and down 8 percent from the same quarter in 2024.



## U.S. Truck Rates

**Figure 1: Average Truck Rates for Select Routes (\$/Mile)**



Note: The rates for 8 long-haul fruit and vegetable truck corridors are included in the national rates, weighted by commodity and origin volume. In 2025 Q1 and Q2, 0-500 mile rates from regions in California to Los Angeles were not reported, which significantly lowered the national average. Source: AMS Transportation Economics Division analysis of AMS Specialty Crops Program Market News data.

**Table 1: Average U.S. Truck Rates for Select Routes Between 501 and 1,500 Miles (\$/Mile)**

Year	1st Quarter	2nd Quarter	3rd Quarter	4th Quarter
2025	2.30	2.60		
2024	2.69	2.84	2.58	2.56
2023	2.84	2.83	2.68	2.54
2022	3.62	3.68	3.23	3.02
2021	2.92	3.56	3.22	3.48
2020	2.57	2.53	2.58	2.94
2019	2.60	2.62	2.48	2.55
2018	2.84	3.01	2.76	2.85
2017	1.85	2.43	2.47	2.57
2016	2.23	2.38	2.44	2.06
2015	2.47	2.66	2.54	2.37
2014	2.21	2.70	2.67	2.50
2013	2.25	2.63	2.65	2.29

Note: The rates for 8 long-haul fruit and vegetable truck corridors are included in the national rate, weighted by commodity and origin volume. Table values may not conform exactly due to rounding.

Source: AMS Transportation Economics Division analysis of AMS Specialty Crops Program Market News data.



## AGRICULTURAL REFRIGERATED TRUCK QUARTERLY

Quarter 2, 2025

**Table 2: Quarterly Rates for Key Origins by Month; 501-1,500 miles (\$/Mile)**

U.S. Origin	2nd Quarter, 2025			1st Quarter, 2025		
	April	May	June	January	February	March
California	2.60	2.58	2.49	3.51	2.89	2.14
Florida	2.72	3.35	3.08	2.33	2.60	2.38
Great Lakes	4.20	4.17	4.17	4.29	4.29	4.29
Mexico-Arizona	2.72	2.86	2.78	3.43	2.63	2.62
Mexico-Texas	2.73	2.76	2.59	3.36	3.01	2.92
New York	3.18	3.18	3.18	3.18	3.18	3.18
Other	3.00	3.00	3.00	3.00	3.00	3.00
PNW	2.57	2.54	2.54	2.98	2.76	2.72
Southeast	n/a	n/a	3.69	n/a	n/a	n/a

Note: "n/a" indicates rates not available.

Source: AMS Transportation Economics Division analysis of AMS Specialty Crops Program Market News data.

## Truck Rates for Select Routes

**Table 3: Origin-Destination Truck Rates for Select Routes, 2nd Quarter 2025 (\$/Mile)**

U.S. Origin	Atlanta	Baltimore	Boston	Chicago	Dallas	Los Angeles	Miami	New York	Philadelphia	Seattle
Arizona	n/a	2.60	n/a	n/a	n/a	n/a	n/a	2.56	2.58	n/a
California	2.35	2.68	n/a	n/a	2.56	n/a	2.45	2.64	2.70	n/a
Florida	3.25	3.14	3.18	2.26	n/a	1.51	3.54	3.08	3.27	n/a
Great Lakes	4.23	3.91	4.23	5.25	n/a	n/a	3.33	4.36	n/a	n/a
Mexico-Arizona	2.72	2.58	2.64	2.46	2.83	2.73	2.88	2.63	2.62	n/a
Mexico-Texas	2.93	2.64	n/a	2.47	3.51	1.81	2.64	n/a	2.69	n/a
New York	3.50	n/a	15.59	n/a	n/a	n/a	2.86	15.67	9.35	n/a
Other	2.95	3.20	2.90	n/a	3.05	n/a	n/a	n/a	n/a	n/a
PNW	2.63	2.60	2.51	2.53	2.61	2.55	2.59	2.72	2.67	6.91
Southeast	6.81	4.11	3.64	3.30	2.92	1.79	4.20	4.11	4.06	n/a

Note: "n/a" indicates rates not available.

Source: AMS Transportation Economics Division analysis of AMS Specialty Crops Program Market News data.



## AGRICULTURAL REFRIGERATED TRUCK QUARTERLY

Quarter 2, 2025

**Table 4: Origin-Destination Truck Rates for Select Routes, 2nd Quarter 2025 (\$/Truck)**

U.S. Origin	Atlanta	Baltimore	Boston	Chicago	Dallas	Los Angeles	Miami	New York	Philadelphia	Seattle
Arizona	n/a	6,750	n/a	n/a	n/a	n/a	n/a	6,900	6,850	n/a
California	4,931	7,334	7,115	4,050	3,327	n/a	6,373	7,493	7,524	2,758
Florida	1,460	3,104	4,258	2,642	n/a	3,800	850	3,384	3,383	n/a
Great Lakes	4,015	3,677	4,650	1,312	n/a	n/a	5,388	4,492	n/a	n/a
Mexico-Arizona	4,892	6,071	7,129	4,423	2,773	1,527	6,550	6,565	6,296	n/a
Mexico-Texas	3,365	4,723	n/a	3,527	1,754	2,888	4,042	n/a	5,119	n/a
New York	3,500	n/a	2,650	n/a	n/a	n/a	4,150	2,350	2,150	n/a
Other	4,250	5,725	6,225	n/a	2,225	n/a	n/a	n/a	n/a	n/a
PNW	6,118	6,385	6,875	4,535	4,835	2,664	7,740	6,951	6,994	967
Southeast	1,225	2,875	4,000	2,890	2,775	4,200	2,100	3,700	3,250	n/a

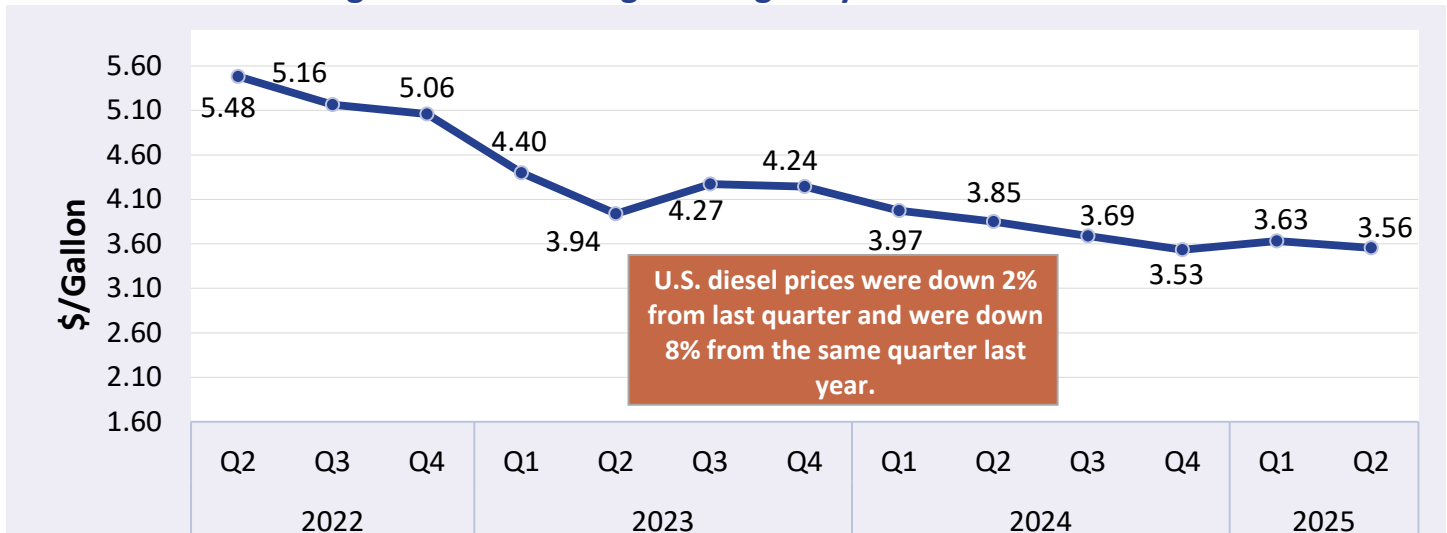
Note: "n/a" indicates rates not available.

Source: AMS Transportation Economics Division analysis of AMS Specialty Crops Program Market News data.

## U.S. Diesel Fuel Prices

The diesel fuel price provides a proxy for trends in U.S. truck rates. Diesel fuel is a significant component underlying truck rates.

**Figure 2: U.S. Average On-Highway Diesel Fuel Prices**



Source: AMS Transportation Economics Division analysis of Energy Information Administration/U.S. Department of Energy data.





## AGRICULTURAL REFRIGERATED TRUCK QUARTERLY

Quarter 2, 2025

**Table 5: Average Diesel Fuel Prices (All Types)**

Region	2nd Quarter 2025 Price \$/Gallon	Change From Last Quarter	Change From Last Year
East Coast	3.62	-3%	-8%
California	4.79	< 1%	-6%
New England	3.92	-1%	-7%
Central Atlantic	3.82	-3%	-8%
Lower Atlantic	3.51	-4%	-9%
Gulf Coast	3.22	-4%	-10%
Midwest	3.50	-2%	-7%
Rocky Mountain	3.51	1%	-7%
West Coast Except California	3.83	< 1%	-6%
<b>U.S.</b>	<b>3.56</b>	<b>-2%</b>	<b>-8%</b>

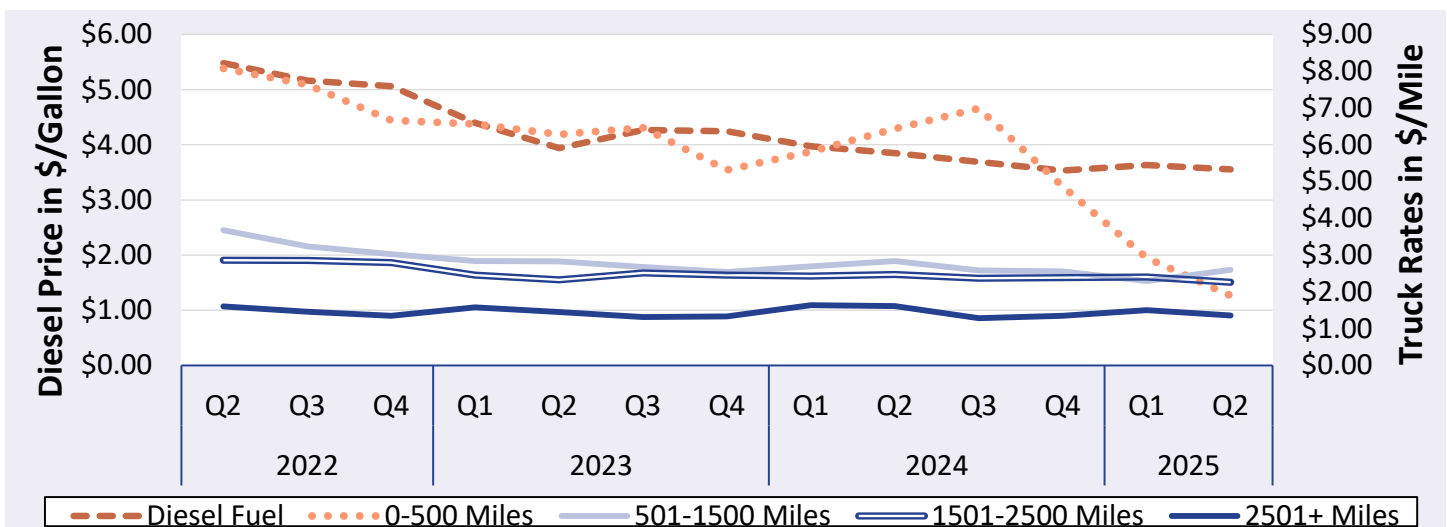
Note: Table values may not conform exactly due to rounding.

Source: AMS Transportation Economics Division analysis of Energy Information Administration/U.S. Department of Energy data.

## Relationship Between Diesel Fuel and Truck Rates

The diesel fuel price provides a proxy for trends in U.S. truck rates. Diesel fuel is a significant expense for fruit and vegetable movements.

**Figure 3: U.S. Average On-Highway Diesel Fuel Prices and Truck Rates**



Note: The rates for 8 long-haul fruit and vegetable truck corridors are included in the national rates, weighted by origin volume. See note in Figure 1 on the recent decline in 0-500 mile rates.

Sources: AMS Transportation Economics Division analysis of AMS Specialty Crops Program Market News data and Energy Information Administration/U.S. Department of Energy data.



## AGRICULTURAL REFRIGERATED TRUCK QUARTERLY

Quarter 2, 2025

**Table 6: Average Diesel Fuel Prices and Truck Rates**

Year	Quarter	Diesel Fuel (\$/gallon)	Truck Rates (\$/mile) 501-1500 miles	% Change From			
				Last Quarter		Last Year	
				Diesel	Truck	Diesel	Truck
<b>2025</b>	Q2	3.56	2.60	-2%	13%	-8%	-8%
	Q1	3.63	2.30	3%	-10%	-9%	-15%
<b>2024</b>	Q4	3.53	2.56	-4%	-1%	-17%	1%
	Q3	3.69	2.58	-4%	-9%	-14%	-4%
	Q2	3.85	2.84	-3%	5%	-2%	< 1%
	Q1	3.97	2.69	-6%	6%	-10%	-5%
<b>2023</b>	Q4	4.24	2.54	-1%	-5%	-16%	-16%
	Q3	4.27	2.68	8%	-5%	-17%	-17%
	Q2	3.94	2.83	-10%	> -1%	-28%	-23%
	Q1	4.40	2.84	-13%	-6%	3%	-22%
<b>2022</b>	Q4	5.06	3.02	-2%	-7%	38%	-13%
	Q3	5.16	3.23	-6%	-12%	54%	1%
	Q2	5.48	3.68	28%	2%	71%	3%

Note: Table values may not conform exactly due to rounding.

Source: AMS Transportation Economics Division analysis of AMS Specialty Crops Program Market News data and Energy Information Administration/U.S. Department of Energy data.



# AGRICULTURAL REFRIGERATED TRUCK QUARTERLY

Quarter 2, 2025

## Quarterly Truck Availability

**Table 7: U.S. Fresh Fruit and Vegetable Truck Availability**

Truck availability legend														
1=Surplus		2=Slight surplus		3=Adequate		4=Slight shortage		5=Shortage						
California, Central, And Western Arizona	Commodities	4/1	4/8	4/15	4/22	4/29	5/6	5/13	5/20	5/27	6/3	6/10	6/17	6/24
Central Coast California	Anise, Bok Choy, Cabbage, Chinese Cabbage, Cilantro, Endive, Escarole, Kale Greens, Leeks, Parsley, Spinach							3	3	3	3	3	3	3
Imperial, Coachella Valleys Ca, Central And Western Az, Mexico Crossings Through Calexico And San Luis	Celery, Sweet Corn	3	3	3	3									
Kern District California	Carrots, Grapes		3	3	3	3	3	3	3	3	3	3	3	3
Oxnard District California	Brussels Sprouts, Cabbage, Celery, Cilantro, Kale Greens, Parsley, Radishes, Spinach	3	3	3	3	3	3	3	3	3	3	3	3	3
Salinas-Watsonville California	Broccoli, Cabbage, Cauliflower, Boston Lettuce, Green Leaf Lettuce, Iceberg Lettuce, Red Leaf Lettuce, Romaine Lettuce, Green Onions		3	3	3	3	3	3	3	3	3	3	3	3
Santa Maria California	Broccoli, Cauliflower, Celery, Cilantro		3	3	3	3	3	3	3	3	3	3	3	3
South And Central District California	Grapefruit, Lemons, Oranges, Cherries, Tangelos	2	2	2	2	2	2	2	2	2	2	3	3	3
Florida	Commodities	4/1	4/8	4/15	4/22	4/29	5/6	5/13	5/20	5/27	6/3	6/10	6/17	6/24
Central And North Florida	Tomatoes, Cherry Tomatoes, Grape Tomatoes, Plum Tomatoes, Watermelons										3	3	5	5
Central And South Florida	Tomatoes, Cherry Tomatoes, Grape Tomatoes, Plum Tomatoes, Watermelons, Round Green Beans, Cabbage, Sweet Corn, Cucumbers, Eggplant, Bell Peppers, Other Peppers, Radishes, Yellow Squash Crookneck/Straightneck, Zucchini Squash		3	4	4	4	4	4	4	3	3	3	5	5
Florida	Potatoes	3	3	3	3	3	3	3	3	3	3	3	3	3

Note: Empty cells were not reported. District and availabilities data come from the weekly Specialty Crops Truck Rate reports:

[https://mymarketnews.ams.usda.gov/filerepo/reports?field\\_slug\\_id\\_value=2375](https://mymarketnews.ams.usda.gov/filerepo/reports?field_slug_id_value=2375).

Source: AMS Transportation Economics Division analysis of AMS Specialty Crops Program Market News data.





## AGRICULTURAL REFRIGERATED TRUCK QUARTERLY

Quarter 2, 2025

**Table 7, continued: U.S. Fresh Fruit and Vegetable Truck Availability**

Truck availability legend														
1=Surplus	2=Slight surplus	3=Adequate	4=Slight shortage	5=Shortage										
Great Lakes (MI & WI)	Commodities	4/1	4/8	4/15	4/22	4/29	5/6	5/13	5/20	5/27	6/3	6/10	6/17	6/24
Central Wisconsin	Dry Onions, Potatoes	3	2	2	2	2	2	2	2	2	2	2	2	2
U.S.-Mexico border	Commodities	4/1	4/8	4/15	4/22	4/29	5/6	5/13	5/20	5/27	6/3	6/10	6/17	6/24
Imperial, Coachella Valleys Ca, Central And Western Az, Mexico Crossings Through Calexico And San Luis	Celery, Sweet Corn	3	3	3	3									
Nogales, Arizona	Grapes, Mangos, Tomatoes, Grape Tomatoes, Plum Tomatoes, Cucumbers, Bell Peppers, Grey Squash, Kabocha Squash, Yellow Squash Straightneck, Zucchini Squash, Other Peppers, Eggplant, Acorn Squash, Butternut Squash, Spaghetti Squash, Green Beans, Cherry Tomatoes, Sweet Corn	3	3	4	3	3	3	4	3	3	4	3	3	3
South Texas	Asparagus, Broccoli, Carrots, Chayote, Cilantro, Cucumbers, Grapefruit, Limes, Oranges, Papaya, Anaheim Peppers, Bell Peppers, Habanero Peppers, Jalapeno Peppers, Poblano Peppers, Serrano Peppers, Pineapples, Tomatillos, Tomatoes, Grape Tomatoes, Plum Tomatoes, Watermelons	2	1	3	1	1	1	1	1	1	1	1	1	1
Pacific Northwest (ID, OR, & WA)	Commodities	4/1	4/8	4/15	4/22	4/29	5/6	5/13	5/20	5/27	6/3	6/10	6/17	6/24
Columbia Basin Washington	Dry Onions, Potatoes	3	2	2	2	2	2	2	2	2	2	2	2	2
Upper Valley, Twin Falls- Burley District Idaho	Potatoes	3	2	2	2	2	2	2	2	2	2	2	2	2
Yakima Valley And Wenatchee District, Washington	Apples, Blueberries, Cherries, Pears, Rhubarb, Asparagus	1	1	1	1	1	1	1	1	1	1	3	3	3

Note: Empty cells were not reported. District and availabilities data come from the weekly Specialty Crops Truck Rate reports:

[https://mymarketnews.ams.usda.gov/filerepo/reports?field\\_slug\\_id\\_value=2375](https://mymarketnews.ams.usda.gov/filerepo/reports?field_slug_id_value=2375).

Source: AMS Transportation Economics Division analysis of AMS Specialty Crops Program Market News data.

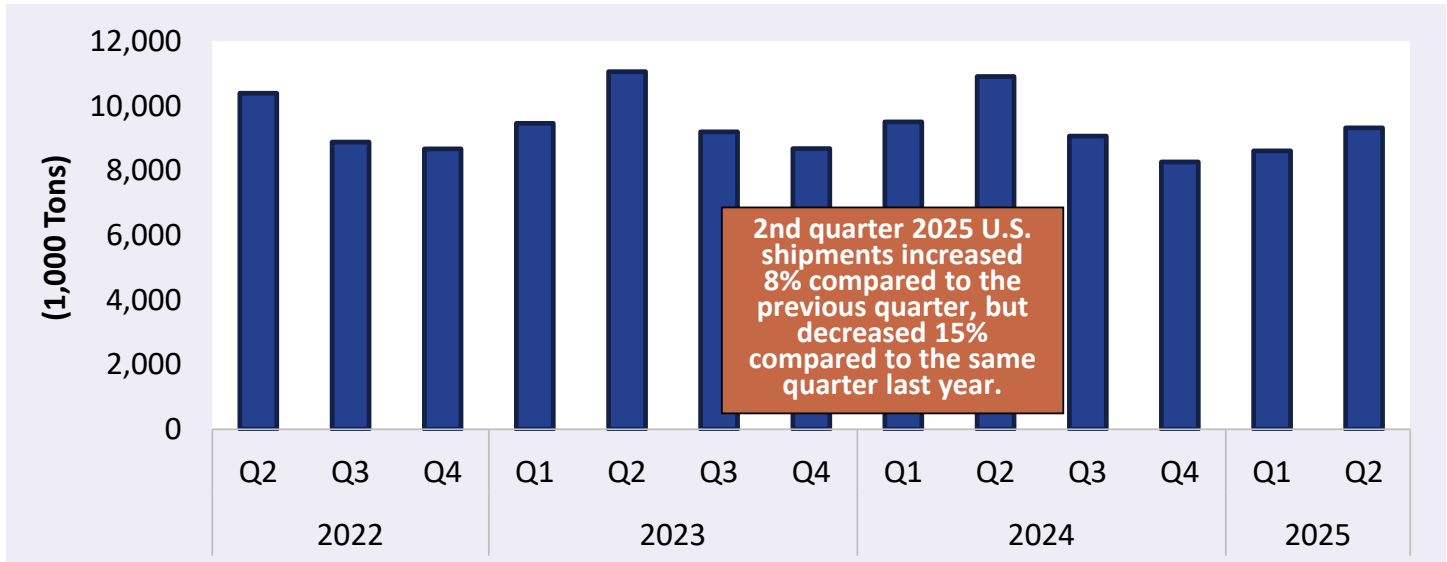


## AGRICULTURAL REFRIGERATED TRUCK QUARTERLY

Quarter 2, 2025

### Reported U.S. Shipments

**Figure 4: Reported U.S. Fruit and Vegetable Shipments (1,000 Tons)**



Source: AMS Transportation Economics Division analysis of AMS Specialty Crops Program Market News data. There is a delay in the California citrus data reporting and it is missing from this report.

**Table 8: Reported U.S. Fruit and Vegetable Shipments (1,000 Tons)**

Year	1st Quarter	2nd Quarter	3rd Quarter	4th Quarter	Annual
2025	8,618	9,328			
2024	9,517	10,921	9,071	8,278	37,788
2023	9,473	11,067	9,204	8,684	38,429
2022	8,751	10,404	8,891	8,678	36,724
2021	9,742	11,265	9,334	8,749	39,091
2020	9,749	10,502	8,872	8,677	37,799
2019	9,027	9,983	8,483	8,329	35,822
2018	9,019	10,463	8,581	8,139	36,202
2017	7,706	9,369	8,279	7,873	33,228
2016	7,745	9,562	8,329	7,777	33,413
2015	7,664	9,267	7,994	7,392	32,317
2014	7,300	8,859	7,827	7,249	31,236
2013	6,948	8,821	7,718	7,051	30,537
2012	7,071	8,792	7,703	7,230	30,797
2011	6,474	8,809	7,582	7,076	29,942
2010	6,532	8,739	7,845	7,070	30,187
2009	6,646	8,530	7,653	6,902	29,732

Note: Table values may not conform exactly due to rounding. There is a delay in the California citrus data reporting and it is missing from this report.

Source: AMS Transportation Economics Division analysis of AMS Specialty Crops Program Market News data.



## AGRICULTURAL REFRIGERATED TRUCK QUARTERLY

Quarter 2, 2025

### Reported Shipments by Select Commodities

**Table 9: Reported Top 10 Commodity Shipments (1,000 Tons)**

Commodity	2nd Quarter 2025	Previous Quarter	Same Quarter Last Year	Current Quarter as % change from:	
				Previous Qtr	Same Qtr Last Year
Watermelons	1,096	166	1,307	560%	-16%
Potatoes	1,063	1,136	1,084	-6%	-2%
Onions, Dry	612	621	602	-1%	2%
Apples	578	679	608	-15%	-5%
Strawberries	509	376	481	35%	6%
Cucumbers	378	372	375	2%	1%
Tomatoes, Plum Type	361	359	345	< 1%	4%
Tomatoes	343	327	361	5%	-5%
Avocados	336	333	377	1%	-11%
Peppers, Bell Type	295	357	307	-17%	-4%

Note: Table values may not conform exactly due to rounding. There is a delay in the California citrus data reporting and it is missing from this report.

Source: AMS Transportation Economics Division analysis of AMS Specialty Crops Program Market News data.

**Table 10: Reported Top 10 Regions (1,000 Tons)**

Origin	2nd Quarter 2025 Volume	% Change from Last Quarter	% Change From Same Quarter Last Year
Mexico	3554	1%	0%
California	1824	292%	-45%
PNW	1303	-17%	4%
Florida	780	22%	-18%
Southeast	465	-	-12%
Canada	383	8%	8%
Arizona	306	-76%	29%
Texas	195	103%	9%
Colorado	167	-24%	-2%
Great Lakes	121	-34%	-27%

Note: The Regional Markets section of this report excludes Canada, because it lacks rate and availability data. Table values may not conform exactly due to rounding. Any "-" in the table indicates no reported shipments during the quarter or a percentage change with an at- or near-zero denominator. There is a delay in the California citrus data reporting and it is missing from this report.

Source: AMS Transportation Economics Division analysis of AMS Specialty Crops Program Market News data.



## REGIONAL MARKETS

## U.S. Mexico Border

## Volume

Total reported shipments of fruit and vegetables from Mexico in second quarter 2025 were 3.55 million tons, down less than 1 percent from second quarter 2024 (year to year). The summed volume of the top five commodities shipped from the U.S. Mexico border increased 4 percent year to year. Three of the top five commodities showed year-to-year increases. Shipments of cucumbers and avocados decreased less than 1 percent and 11 percent, respectively. Shipments of plum tomatoes, watermelons and mangoes showed increases of 2 percent, 13 percent, and 16 percent, respectively.

## Rates

In second quarter 2025, truck rates for shipments between 501 miles and 1,500 miles from Arizona-Mexico border crossings averaged \$2.78 per mile—down 4 percent quarter to quarter and up 2 percent year to year. Rates for shipments between 501 miles and 1,500 miles from Texas-Mexico border crossings averaged \$2.70 per mile—down 13 percent quarter to quarter and up 3 percent year to year.

## Truck Overview

Diesel fuel prices for border crossings from Arizona averaged \$3.83 per gallon—up less than 1 percent quarter to quarter and down 6 percent year to year. Diesel fuel prices for border crossings from Texas averaged \$3.22—down 4 percent quarter to quarter and down 10 percent year to year. Mexico crossings through Calexico and San Luis reported adequate truck availability in April and did not report in May and June. Mexico crossings through Nogales, AZ, reported adequate truck availability throughout the quarter. Mexico crossings through South Texas reported a slight surplus in April and a surplus in May and June.

**Table 11: Reported Top Five Commodities Shipped from Mexico (1,000 tons)**

Commodity	2nd Quarter 2025	Share of Mexico Total	Previous Quarter	Same Quarter Last Year	Current Quarter as % change from:	
					Previous Qtr	Same Qtr Last Year
Watermelons	423	12%	164	376	158%	13%
Tomatoes, Plum Type	297	8%	309	292	-4%	2%
Avocados	248	7%	308	279	-19%	-11%
Cucumbers	247	7%	302	248	-18%	> -1%
Mangoes	197	6%	43	169	357%	16%
Top 5 Total	1,413	40%	1,126	1,363	25%	4%
Mexico Total	3,554	100%	3,514	3,568	1%	> -1%

Note: Any "-" in the table indicates no reported shipments during the quarter or a percentage change with an at- or near-zero denominator. Table values may not conform exactly due to rounding.

Source: AMS Transportation Economics Division analysis of AMS Specialty Crops Program Market News data.



## AGRICULTURAL REFRIGERATED TRUCK QUARTERLY

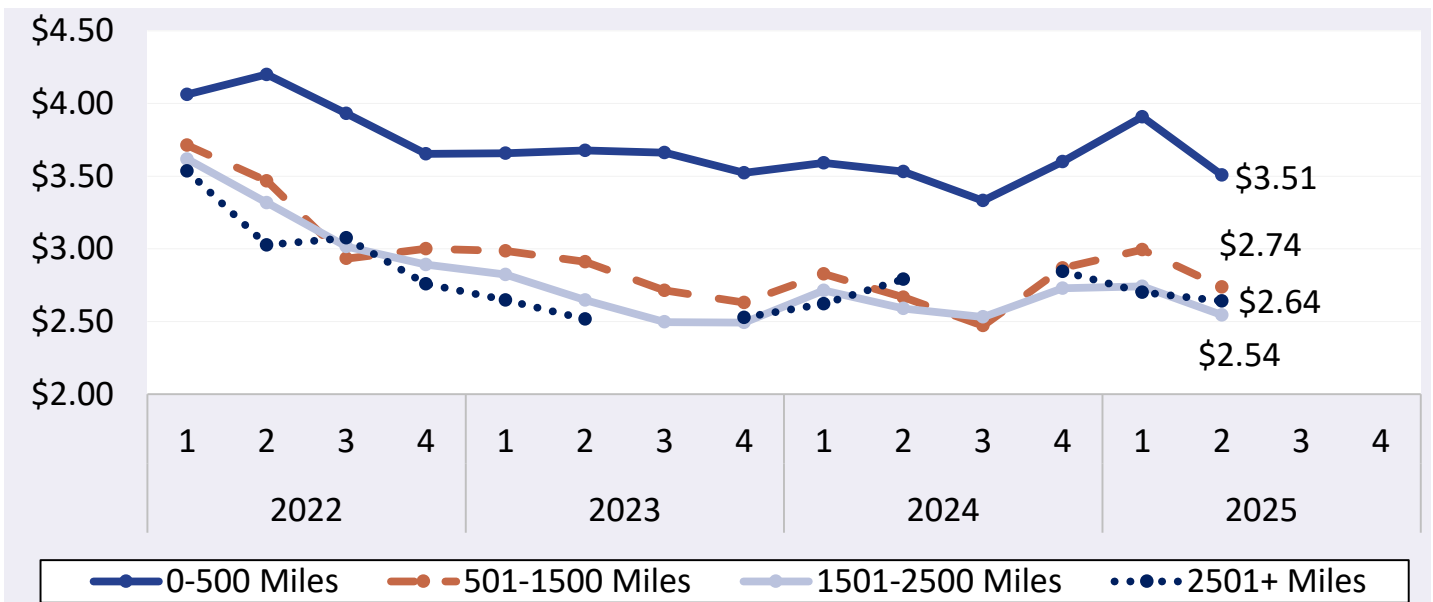
Quarter 2, 2025

**Table 12: Top 5 Commodities Shipped to U.S. from Mexico by State of Entry (1,000 tons)**

Texas		California		Arizona		New Mexico	
Commodity	2nd Quarter 2025	Commodity	2nd Quarter 2025	Commodity	2nd Quarter 2025	Commodity	2nd Quarter 2025
Avocados	244	Strawberries	75	Watermelons	348	Onions, Dry	33
Limes	154	Onions, Green	49	Grapes	149	Onions, Green	2
Mangoes	147	Tomatoes, Plum Type	31	Tomatoes, Plum Type	138	Peppers, Jalapeno	< 1
Tomatoes, Plum Type	128	Cucumbers	29	Cucumbers	131	Garlic	< 1
Cucumbers	88	Asparagus	23	Peppers, Bell Type	81	Tomatillos	< 1
Mexico through TX Total	1,744	Mexico through CA Total	529	Mexico through AZ Total	1,243	Mexico through NM Total	12,883

Note: Table values may not conform exactly due to rounding. Any "-" in the table indicates no reported shipments during the quarter.  
Source: AMS Transportation Economics Division analysis of AMS Specialty Crops Program Market News data.

**Figure 5: Truck Rates from U.S.-Mexico Border (\$/Mile by Distance Traveled)**



Note: Any gaps in the chart lines are the result of quarters with no reported data for the region.

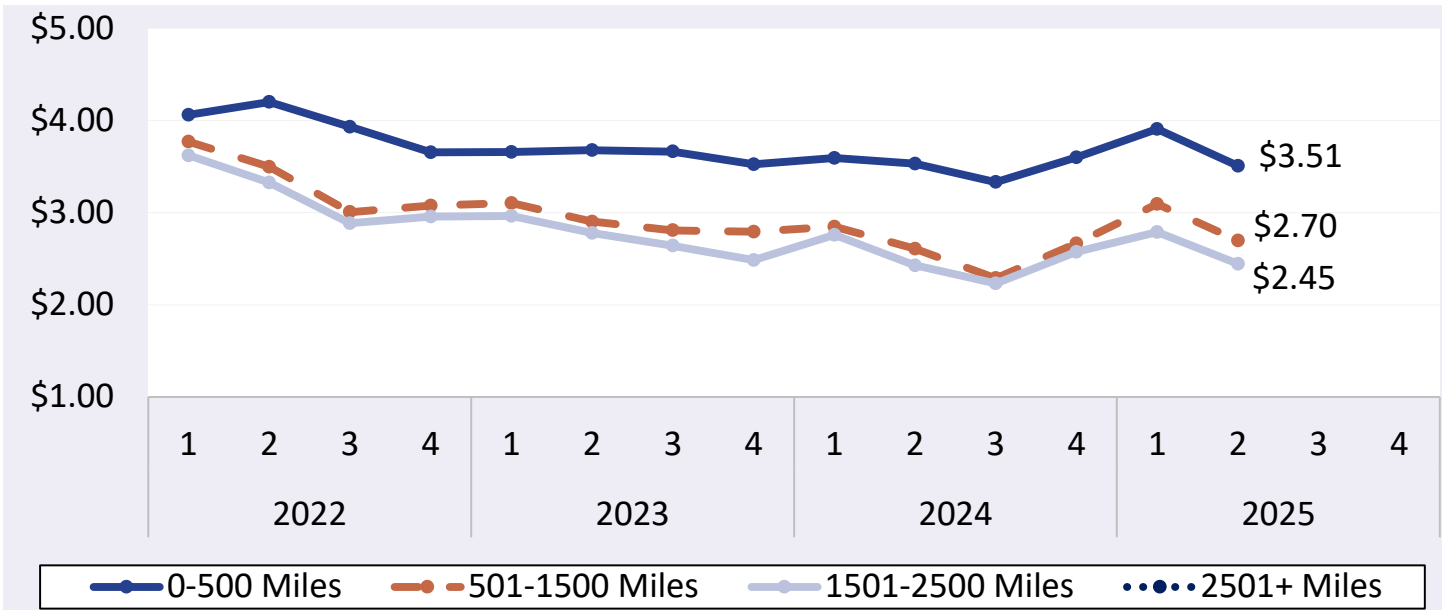
Source: AMS Transportation Economics Division analysis of AMS Specialty Crops Program Market News data.



## AGRICULTURAL REFRIGERATED TRUCK QUARTERLY

Quarter 2, 2025

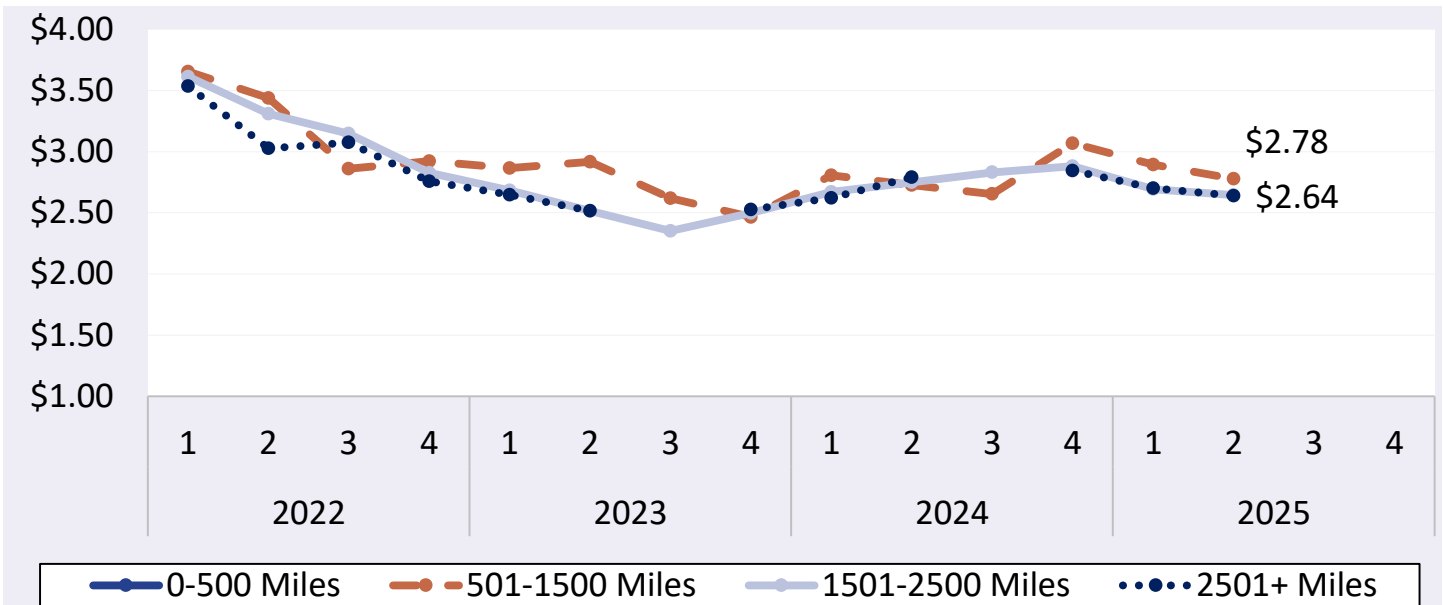
**Figure 6: Texas Truck Rates from U.S.-Mexico Border (\$/Mile by Distance Traveled)**



Note: Any gaps in the chart lines are the result of quarters with no reported data for the region.

Source: AMS Transportation Economics Division analysis of AMS Specialty Crops Program Market News data.

**Figure 7: Arizona Truck Rates from U.S.-Mexico Border (\$/Mile by Distance Traveled)**



Note: Any gaps in the chart lines are the result of quarters with no reported data for the region.

Source: AMS Transportation Economics Division analysis of AMS Specialty Crops Program Market News data.





## AGRICULTURAL REFRIGERATED TRUCK QUARTERLY

Quarter 2, 2025

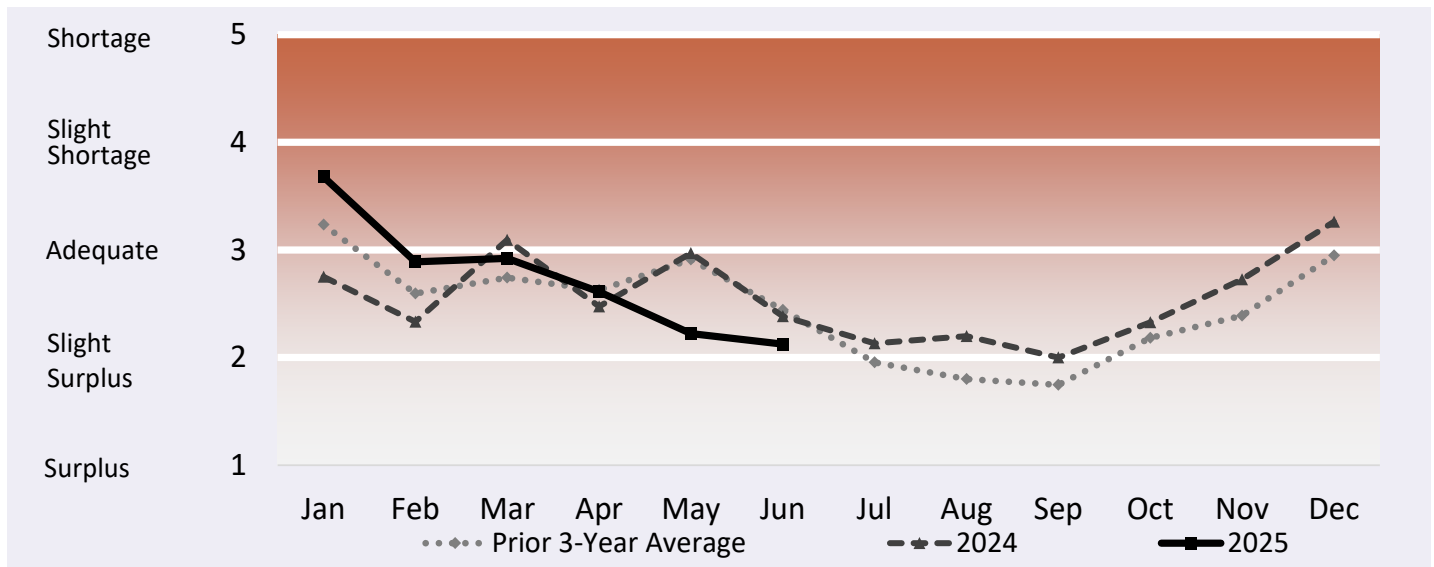
**Table 13: Truck Overview from the U.S.-Mexico Border**  
(Availability Rating: 1=Surplus to 5=Shortage)

Region/Reporting District	April	May	June	2nd Quarter
Imperial, Coachella Valleys Ca, Central And Western Az, Mexico Crossings Through Calexico And San Luis	3	-	-	3
Mexico Crossings Through Nogales, Arizona	3.22	3.25	3.28	3.25
Mexico Crossings Through South Texas	1.69	1	1	1.23
Regional Average Availability	2.64	2.13	2.14	2.30
Diesel Fuel Price (\$/gallon), through Texas	3.25	3.16	3.25	3.22
Diesel Fuel Price (\$/gallon), through Arizona	3.83	3.77	3.91	3.83

Note: AMS Specialty Crops Program defines regions by commodity, which may overlap in truck availability reporting. Table values may not conform exactly due to rounding. Any "-" in the table indicates no reported shipments during the quarter.

Source: AMS Transportation Economics Division analysis of AMS Specialty Crops Program Market News data.

**Figure 8: Refrigerated Truck Availability Monthly Ratings from the U.S-Mexico Border**



Note: Any gaps in the chart lines are the result of quarters with no reported data for the region.

Source: AMS Transportation Economics Division analysis of AMS Specialty Crops Program Market News data.



## AGRICULTURAL REFRIGERATED TRUCK QUARTERLY

Quarter 2, 2025

### California

#### Volume

In second quarter 2025, USDA reported total shipments of fruit and vegetables from California were 1.82 tons—down 45 percent year to year. The summed volume of the top five commodities shipped from California also decreased 5 percent year to year. Four of the top five commodities saw year-to-year volume decreases, including iceberg lettuce (down less than 1 percent); strawberries (down 6 percent); romaine lettuce (down 8 percent); and avocados (down 12 percent). Shipments of celery increased 4 percent.

#### Rates

The quarterly average truck rate for shipments between 501 miles and 1,500 miles was \$2.56 per mile—down 10 percent quarter to quarter and down 12 percent year to year.

#### Truck Overview

Diesel fuel prices averaged \$4.79 per gallon—up less than 1 percent quarter to quarter and down 6 percent year to year. The Central Coast California district did not report availability in April and reported adequate availability in May and June. The South and Central California District reported a slight surplus in April and May and adequate availability in June. All other districts reported adequate truck availability throughout the quarter.

**Table 14: Reported Top Five Commodities Shipped from California (1,000 tons)**

Commodity	2nd Quarter 2025	Share of California Total	Previous Quarter	Same Quarter Last Year	Current Quarter as % change from:	
					Previous Qtr	Same Qtr Last Year
<b>Strawberries</b>	397	22%	73	424	441%	-6%
<b>Lettuce, Iceberg</b>	232	13%	42	233	458%	> -1%
<b>Lettuce, Romaine</b>	217	12%	52	236	316%	-8%
<b>Celery</b>	135	7%	91	130	50%	4%
<b>Avocados</b>	86	5%	26	98	237%	-12%
<b>Top 5 Total</b>	<b>1,068</b>	<b>59%</b>	<b>283</b>	<b>1,121</b>	<b>277%</b>	<b>-5%</b>
<b>California Total</b>	<b>1,824</b>	<b>100%</b>	<b>465</b>	<b>3,286</b>	<b>292%</b>	<b>-45%</b>

Note: Any "-" in the table indicates no reported shipments during the quarter or a percentage change with an at- or near-zero denominator. Table values may not conform exactly due to rounding. California citrus volumes were not reported in the first or second quarter of 2025.

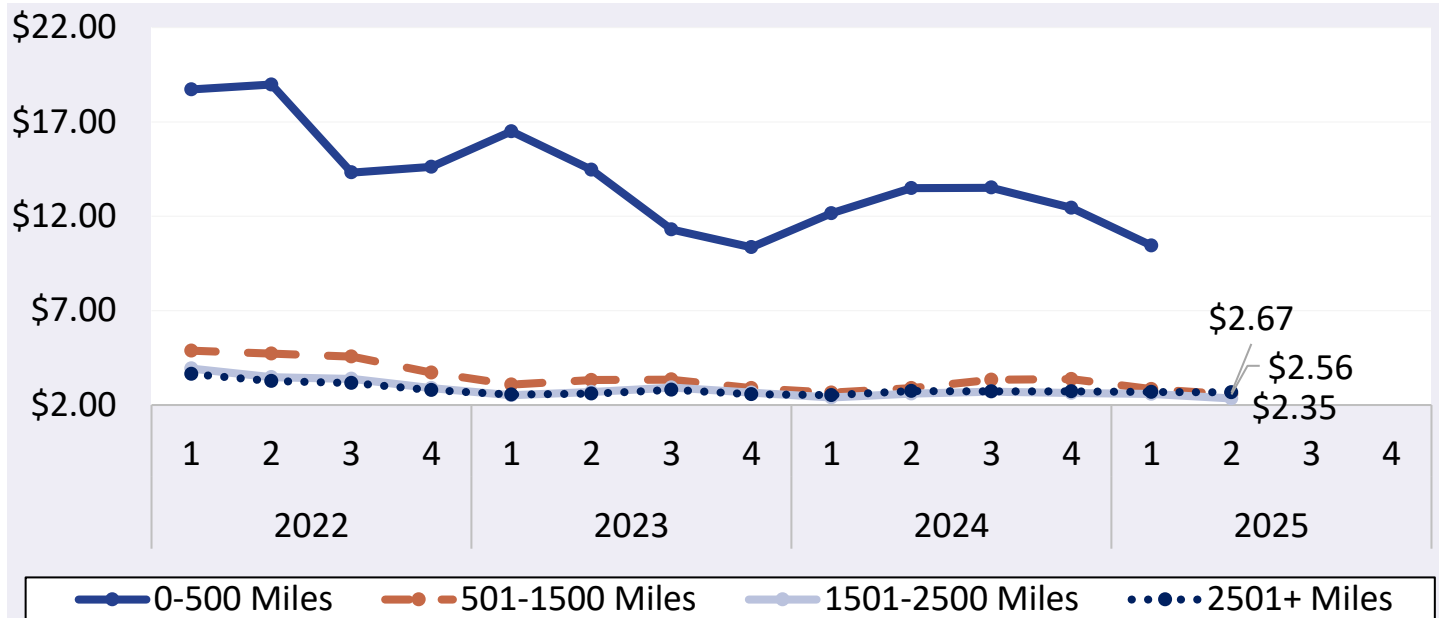
Source: AMS Transportation Economics Division analysis of AMS Specialty Crops Program Market News data.



## AGRICULTURAL REFRIGERATED TRUCK QUARTERLY

Quarter 2, 2025

**Figure 9: California Truck Rates (\$/Mile by Distance Travelled)**



Note: Any gaps in the chart lines are the result of quarters with no reported data for the region.

Source: AMS Transportation Economics Division analysis of AMS Specialty Crops Program Market News data.

**Table 15: California Truck Overview (Availability Rating: 1=Surplus to 5=Shortage)**

Region/Reporting District	April	May	June	2nd Quarter
Central Coast California	-	3	3	3
Kern District California	3	3	3	3
Oxnard District California	3	3	3	3
Salinas-Watsonville California	3	3	3	3
Santa Maria California	2.92	3	3	2.97
South And Central District California	2	2	2.75	2.25
Regional Average Availability	2.78	2.83	2.96	2.86
Diesel Fuel Price (\$/gallon)	4.78	4.78	4.81	4.79

Note: AMS Specialty Crops Program defines regions by commodity, which may overlap in truck availability reporting. Table values may not conform exactly due to rounding. Any "-" in the table indicates no reported shipments during the quarter.

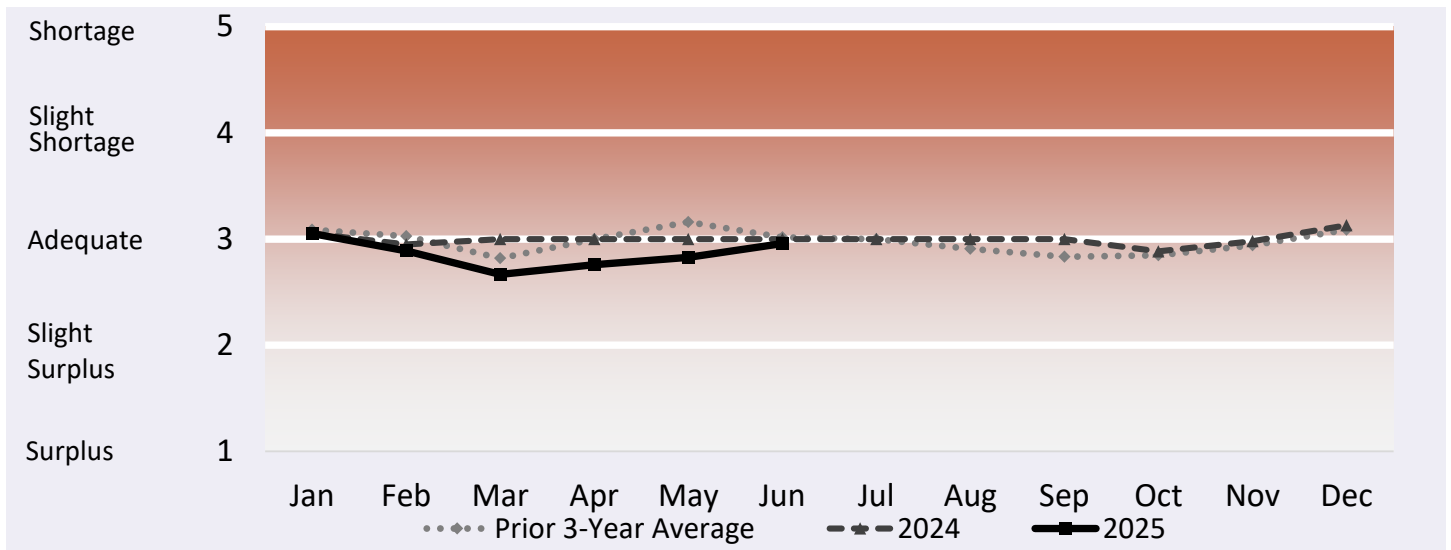
Source: AMS Transportation Economics Division analysis of AMS Specialty Crops Program Market News data.



## AGRICULTURAL REFRIGERATED TRUCK QUARTERLY

Quarter 2, 2025

**Figure 10: Refrigerated Truck Availability Monthly Ratings for California**



Note: Any gaps in the chart lines are the result of quarters with no reported data for the region.

Source: AMS Transportation Economics Division analysis of AMS Specialty Crops Program Market News data.



## AGRICULTURAL REFRIGERATED TRUCK QUARTERLY

Quarter 2, 2025

### PNW

#### Volume

In second quarter 2025, total reported shipments of fruit and vegetables from the Pacific Northwest (PNW) were 1.30 million tons, up 4 percent year to year. The summed volume of the top four commodities shipped from the PNW also increased 4 percent year to year. Three of the top five commodities saw year-to-year volume increases, including potatoes (up 3 percent); cherries (up 12 percent); and dry onions (up 35 percent). Shipments of apples and pears decreased 2 percent and 24 percent, respectively.

#### Rates

The quarterly average truck rate for shipments between 501 miles and 1,500 miles was \$2.55 per mile—down 9 percent quarter to quarter and down 8 percent year to year.

#### Truck Overview

Diesel fuel prices averaged \$3.83 per gallon—up less than 1 percent quarter to quarter and down 6 percent year to year. Columbia Basin and Upper Valley both reported a slight surplus of trucks throughout the quarter. Yakima Valley reported a surplus in April and May and adequate availability in June.

**Table 16: Reported Top Five Commodities Shipped from PNW (1,000 tons)**

Commodity	2nd Quarter 2025	Share of PNW Total	Previous Quarter	Same Quarter Last Year	Current Quarter as % change from:	
					Previous Qtr	Same Qtr Last Year
Potatoes	516	40%	509	503	1%	3%
Apples	490	38%	544	499	-10%	-2%
Onions, Dry	182	14%	439	135	-59%	35%
Cherries	74	6%	-	66	-	12%
Pears	36	3%	85	47	-58%	-24%
Top 5 Total	1,297	100%	1,577	1,250	-18%	4%
PNW Total	1,303	100%	1,577	1,253	-17%	4%

Note: Any "-" in the table indicates no reported shipments during the quarter or a percentage change with an at- or near-zero denominator. Table values may not conform exactly due to rounding.

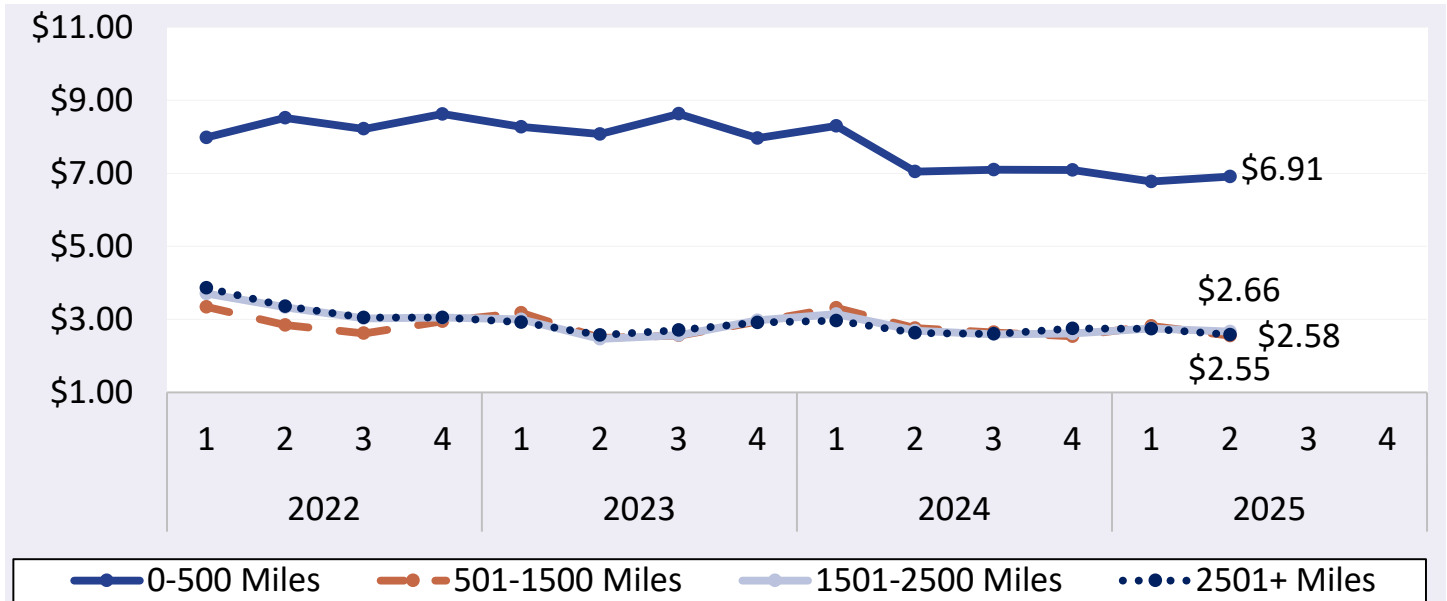
Source: AMS Transportation Economics Division analysis of AMS Specialty Crops Program Market News data.



## AGRICULTURAL REFRIGERATED TRUCK QUARTERLY

Quarter 2, 2025

**Figure 11: PNW Truck Rates (\$/Mile by Distance Travelled)**



Note: Any gaps in the chart lines are the result of quarters with no reported data for the region.

Source: AMS Transportation Economics Division analysis of AMS Specialty Crops Program Market News data.

**Table 17: PNW Truck Overview (Availability Rating: 1=Surplus to 5=Shortage)**

Region/Reporting District	April	May	June	2nd Quarter
Columbia Basin Washington	2.2	2	2	2.07
Upper Valley, Twin Falls-Burley District Idaho	2.2	2	2	2.07
Yakima Valley And Wenatchee District, Washington	1	1	2.5	1.5
Regional Average Availability	1.8	1.67	2.17	1.88
Diesel Fuel Price (\$/gallon)	3.83	3.77	3.91	3.83

Note: AMS Specialty Crops Program defines regions by commodity, which may overlap in truck availability reporting. Table values may not conform exactly due to rounding. Any "-" in the table indicates no reported shipments during the quarter.

Source: AMS Transportation Economics Division analysis of AMS Specialty Crops Program Market News data.

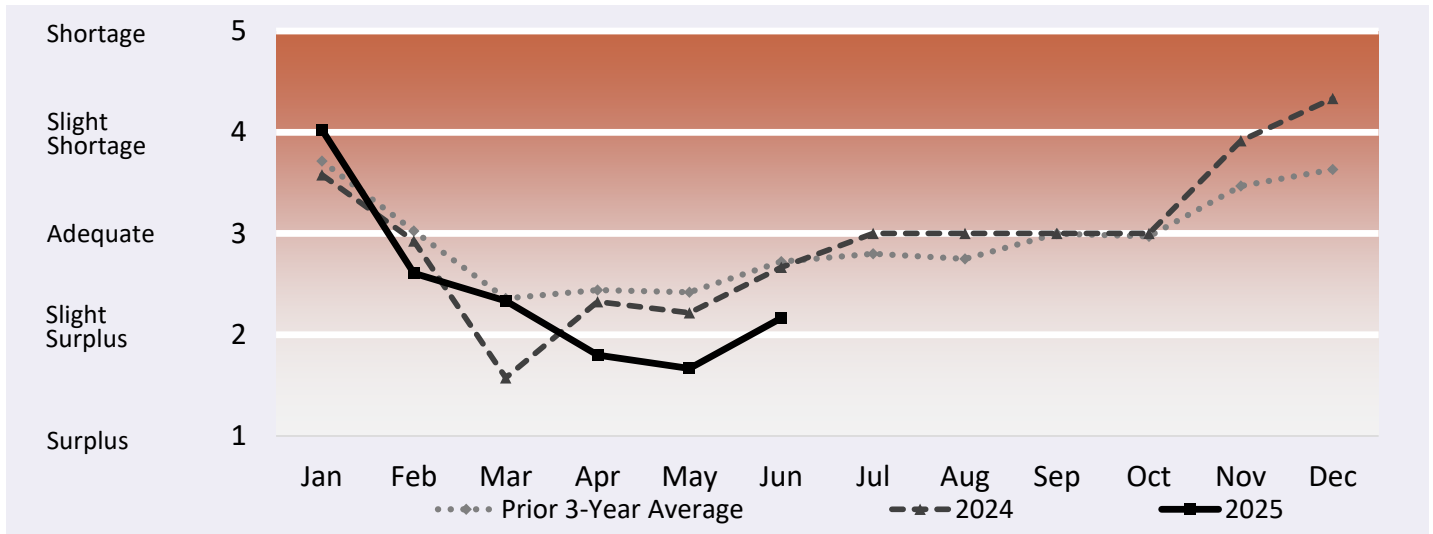




## AGRICULTURAL REFRIGERATED TRUCK QUARTERLY

Quarter 2, 2025

**Figure 12: Refrigerated Truck Availability Monthly Ratings for PNW**



Note: Any gaps in the chart lines are the result of quarters with no reported data for the region.

Source: AMS Transportation Economics Division analysis of AMS Specialty Crops Program Market News data.



## AGRICULTURAL REFRIGERATED TRUCK QUARTERLY

Quarter 2, 2025

### Florida

#### Volume

During second quarter 2025, total reported shipments of fruit and vegetables from Florida were 780,000 tons—down 18 percent year to year. The summed volume of the top five commodities shipped from Florida also decreased 18 percent year to year. Four of the top five commodities saw year-to-year volume decreases in the second quarter, including tomatoes (down 3 percent); plum tomatoes (down 10 percent); sweet corn (down 12 percent); and watermelons (down 27 percent). Shipments of potatoes increased 6 percent.

#### Rates

The quarterly average truck rate for shipments between 501 miles and 1,500 miles was \$3.04 per mile—up 25 percent quarter to quarter and up 3 percent year to year.

#### Truck Overview

Diesel fuel prices averaged \$3.51 per gallon—down 4 percent quarter to quarter and down 9 percent year to year. The Central and North Florida district did not report availability in April and May and reported a slight shortage in June. The Central and South Florida district reported slight shortages throughout the quarter. The Florida district reported adequate availability throughout the quarter.

**Table 18: Reported Top Five Commodities Shipped from Florida (1,000 tons)**

Commodity	2nd Quarter 2025	Share of Florida Total	Previous Quarter	Same Quarter Last Year	Current Quarter as % change from:	
					Previous Qtr	Same Qtr Last Year
Watermelons	323	41%	2	445	14,241%	-27%
Tomatoes	99	13%	100	102	-1%	-3%
Corn, Sweet	88	11%	66	100	33%	-12%
Potatoes	85	11%	33	80	157%	6%
Tomatoes, Plum Type	39	5%	45	43	-13%	-10%
Top 5 Total	633	81%	246	770	157%	-18%
Florida Total	780	100%	641	947	22%	-18%

Note: Any "-" in the table indicates no reported shipments during the quarter or a percentage change with an at- or near-zero denominator. Table values may not conform exactly due to rounding.

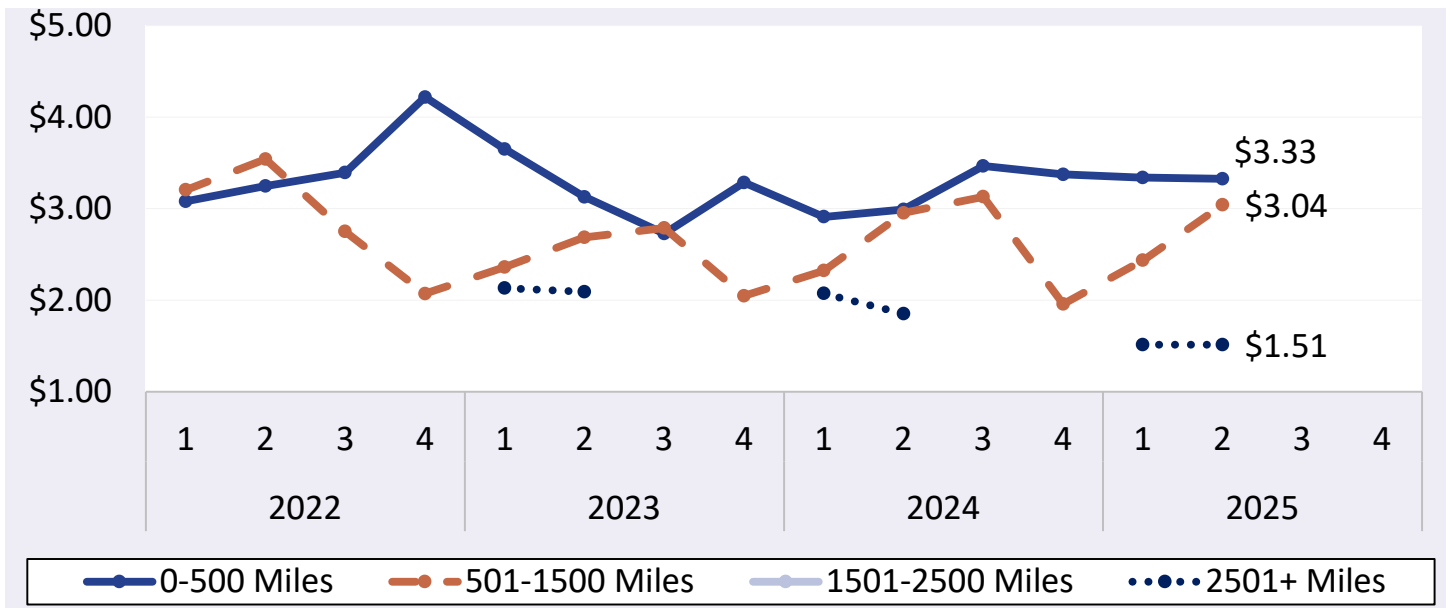
Source: AMS Transportation Economics Division analysis of AMS Specialty Crops Program Market News data.



## AGRICULTURAL REFRIGERATED TRUCK QUARTERLY

Quarter 2, 2025

**Figure 13: Florida Truck Rates (\$/Mile by Distance Travelled)**



Note: Any gaps in the chart lines are the result of quarters with no reported data for the region.

Source: AMS Transportation Economics Division analysis of AMS Specialty Crops Program Market News data.

**Table 19: Florida Truck Overview (Availability Rating: 1=Surplus to 5=Shortage)**

Region/Reporting District	April	May	June	2nd Quarter
Central And North Florida	-	-	3.8	3.8
Central And South Florida	3.54	3.67	4	3.74
Florida	3	3	3	3
Regional Average Availability	3.27	3.33	3.6	3.40
Diesel Fuel Price (\$/gallon)	3.54	3.44	3.55	3.51

Note: AMS Specialty Crops Program defines regions by commodity, which may overlap in truck availability reporting. Table values may not conform exactly due to rounding. Any "-" in the table indicates no reported shipments during the quarter.

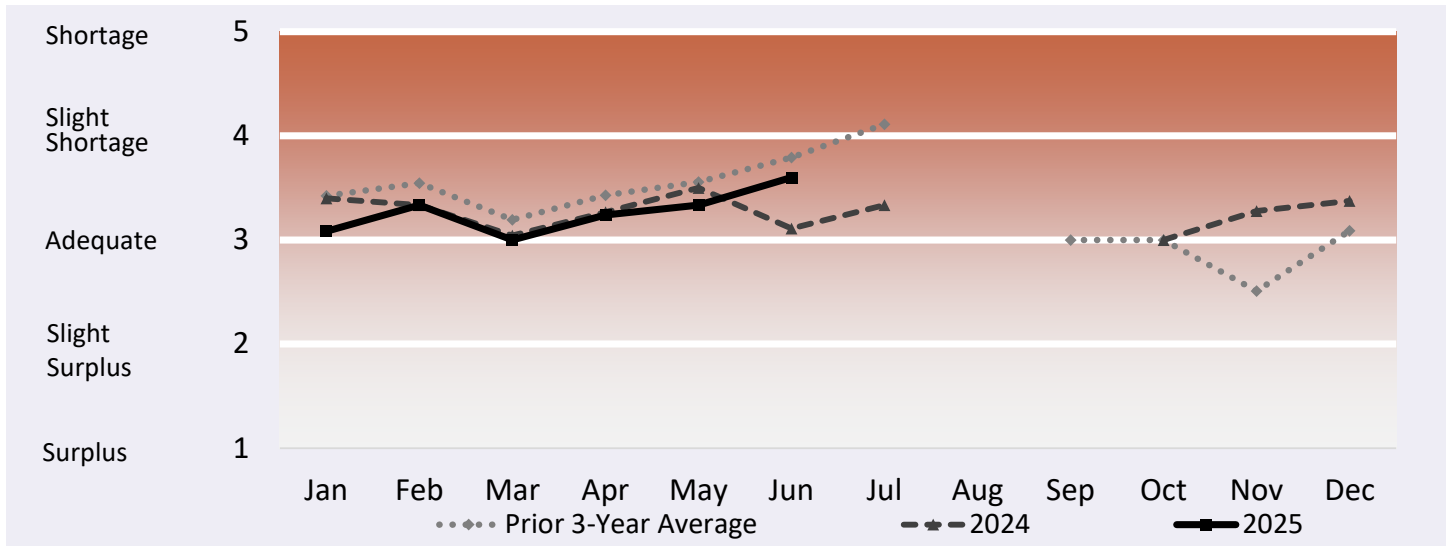
Source: AMS Transportation Economics Division analysis of AMS Specialty Crops Program Market News data.



## AGRICULTURAL REFRIGERATED TRUCK QUARTERLY

Quarter 2, 2025

**Figure 14: Refrigerated Truck Availability Monthly Ratings for Florida**



Note: Any gaps in the chart lines are the result of quarters with no reported data for the region.

Source: AMS Transportation Economics Division analysis of AMS Specialty Crops Program Market News data.



## AGRICULTURAL REFRIGERATED TRUCK QUARTERLY

Quarter 2, 2025

### Southeast

#### Volume

During second quarter 2025, total reported shipments of fruit and vegetables from the Southeast were 465,000 tons—down 12 percent year to year. The summed volume of the top five commodities shipped from the Southeast decreased 19 percent year to year. Four of the top five commodities saw year-to-year volume decreases in the second quarter, including sweet potatoes (down 9 percent); dry onions (down 16 percent); blueberries (down 23 percent); and watermelons (down 39 percent). Shipments of sweet corn increased 520 percent.

#### Rates

The quarterly average truck rate for shipments between 501 miles and 1,500 miles was \$3.69 per mile—up 2 percent year to year.

#### Truck Overview

Diesel fuel prices averaged \$3.51 per gallon—down 4 percent quarter to quarter and down 9 percent year to year. The Vidalia District Georgia did not report availability in April and May and reported adequate availability in June.

**Table 20: Reported Top Five Commodities Shipped from Southeast (1,000 tons)**

Commodity	2nd Quarter 2025	Share of Southeast Total	Previous Quarter	Same Quarter Last Year	Current Quarter as % change from:	
					Previous Qtr	Same Qtr Last Year
Watermelons	161	35%	-	263	-	-39%
Onions, Dry	58	12%	-	69	-	-16%
Corn, Sweet	56	12%	-	9	-	520%
Sweet Potatoes	45	10%	48	49	-6%	-9%
Blueberries	31	7%	-	41	-	-23%
Top 5 Total	351	76%	48	431	637%	-19%
Southeast Total	465	100%	62	529	653%	-12%

Note: Any "-" in the table indicates no reported shipments during the quarter or a percentage change with an at- or near-zero denominator. Table values may not conform exactly due to rounding.

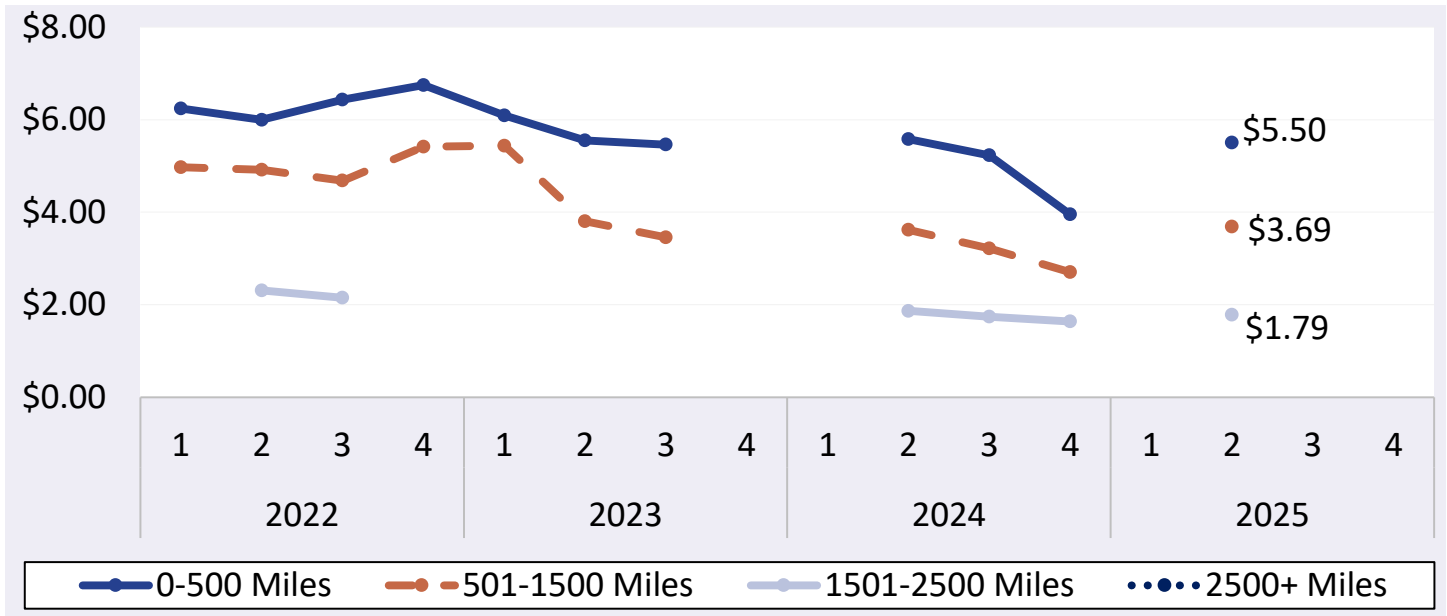
Source: AMS Transportation Economics Division analysis of AMS Specialty Crops Program Market News data.



## AGRICULTURAL REFRIGERATED TRUCK QUARTERLY

Quarter 2, 2025

**Figure 15: Southeast Truck Rates (\$/Mile by Distance Travelled)**



Note: Any gaps in the chart lines are the result of quarters with no reported data for the region.

Source: AMS Transportation Economics Division analysis of AMS Specialty Crops Program Market News data.

**Table 21: Southeast Truck Overview (Availability Rating: 1=Surplus to 5=Shortage)**

Region/Reporting District	April	May	June	2nd Quarter
Vidalia District Georgia	-	-	3	3
Regional Average Availability	-	-	3	3
Diesel Fuel Price (\$/gallon)	3.54	3.44	3.55	3.51

Note: AMS Specialty Crops Program defines regions by commodity, which may overlap in truck availability reporting. Table values may not conform exactly due to rounding. Any "-" in the table indicates no reported shipments during the quarter.

Source: AMS Transportation Economics Division analysis of AMS Specialty Crops Program Market News data.

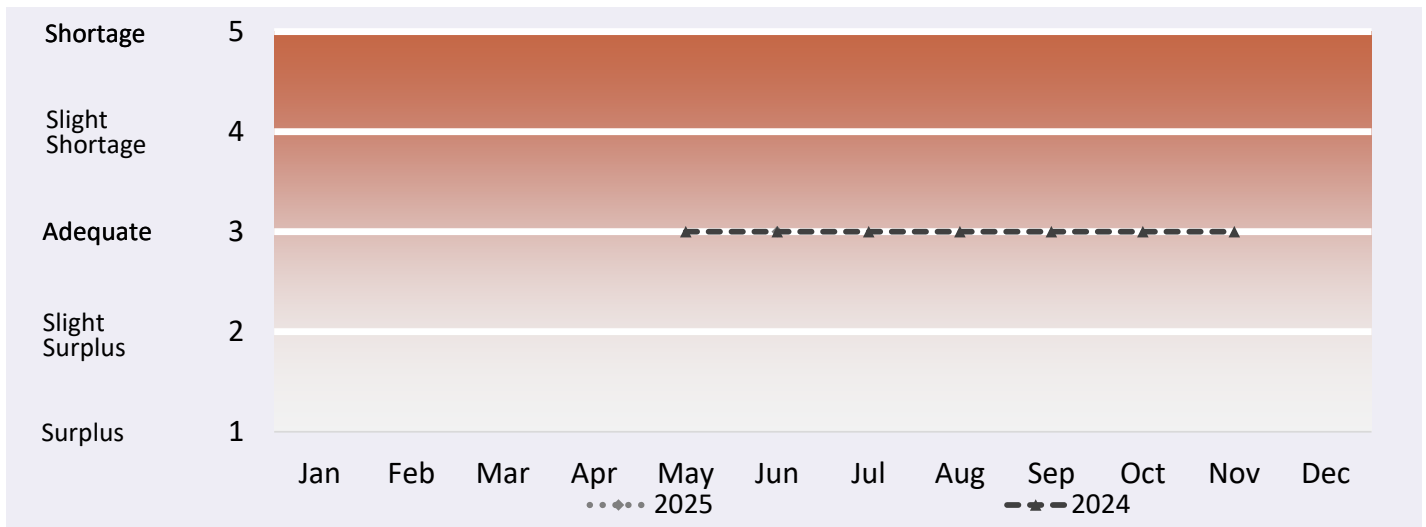




## AGRICULTURAL REFRIGERATED TRUCK QUARTERLY

Quarter 2, 2025

**Figure 16: Refrigerated Truck Availability Monthly Ratings for Southeast**



Note: Any gaps in the chart lines are the result of quarters with no reported data for the region.

Source: AMS Transportation Economics Division analysis of AMS Specialty Crops Program Market News data.



# ADDITIONAL INFORMATION

## Terms and References

### Data Reporting and Publication Window

The publication date of each Agricultural Refrigerated Truck Quarterly (AgRTQ) depends on the timing of data reporting. Reporting of truck shipments in some regions can be delayed 2-3 months past their respective quarter. We publish the AgRTQ one month after that lag in order to capture a more complete picture of truck shipments during the quarter.

### Data Sources

This information is compiled from the weekly Specialty Crops Truck Rate Report by USDA, Agricultural Marketing Service (AMS), Specialty Crops Program, Market News Division. The website is:

<https://www.marketnews.usda.gov/mnp/fv-home>.

### Regional Markets

For the regional markets, some States are grouped into producing regions. The Pacific Northwest region includes Idaho, Oregon, and Washington. The Great Lakes region includes Michigan, Minnesota, and Wisconsin. The Southeast region includes North Carolina, South Carolina and Georgia.

### Shipment Volumes

Truck shipments for all commodities and origins are not available. Those obtainable are reported, but should not be interpreted as representing complete movements of a commodity. Truck shipments from all States are collected at shipping points and include both interstate and intrastate movements. They are obtained from various sources, including Federal marketing orders, administrative committees, Federal State Inspection Service, and shippers. Volume amounts are represented in 10,000 pound units, or 1,000 10-lb packages but are converted to 1,000 tons for this report. Mexican border crossings through Arizona and Texas data is obtained from the Department of Homeland Security (DHS), U.S. Customs and Border and Protection (CBP) through USDA, AMS, Market News.

### Rates

This information is compiled from the weekly Specialty Crops Truck Rate Report. Rates quoted represent open (spot) market rates that shippers or receivers pay depending on basis of sale, per load, including truck brokers fees for shipments in truck load volume to a single destination. Extra charges for delivery to terminal markets, multipickup and multidrop shipments are not included unless otherwise stated. Rates are based on the most usual loads in 48-53 foot trailers from the origin shipping area to the destination receiving city. In areas where rates are based on package rates, per load rates were derived by multiplying the package rate by the number of packages in the most usual load in a 48-53 foot trailer. Slightly cheaper rates will be reported during Quarters 2 and 3 as about 50 percent of onion shipments from California are hauled on open flatbed trailers. During Quarter 3, less than 20 percent of onions hauled from Washington, Idaho, and Oregon are on open flatbeds.

### Regional Rates

Rate data for 10 destination markets are used to calculate average origin regional rates.

### National Rates

The national rates reflect the average of the regional rates, separated by mileage category and weighted by volume between origin and destination.



## Contact Us

### Authors

**Kranti Mulik**, Analyst

[Kranti.Mulik@usda.gov](mailto:Kranti.Mulik@usda.gov), 202.756.2577

**Peter Caffarelli**, Analyst

[PeterA.Caffarelli@usda.gov](mailto:PeterA.Caffarelli@usda.gov), 202.690.3244

**Jesse Gastelle**, Analyst

[Jesse.Gastelle@usda.gov](mailto:Jesse.Gastelle@usda.gov), 202.690.1144

**Francine Vigliotti**, Specialty Crops Program and Market News Division Data

[francine.vigliotti@usda.gov](mailto:francine.vigliotti@usda.gov), 202.720.9938

Please sign up by entering your email address at the following link and selecting your preference to receive Transportation Research and Analysis:

[https://public.govdelivery.com/accounts/USDAAMS/subscriber/new?topic\\_id=USDAAMS\\_177](https://public.govdelivery.com/accounts/USDAAMS/subscriber/new?topic_id=USDAAMS_177)

For assistance with accessibility issues related to this document, please e-mail [SharonC.Williams@usda.gov](mailto:SharonC.Williams@usda.gov).

### Related Websites

USDA's Agricultural Transportation Open Data Platform

<https://agtransport.usda.gov/>

Specialty Crops Program

<https://www.ams.usda.gov/about-ams/programs-offices/specialty-crops-program>

Specialty Crops Truck Rate Report

[https://mymarketnews.ams.usda.gov/filerepo/reports?field\\_slug\\_id\\_value=2375](https://mymarketnews.ams.usda.gov/filerepo/reports?field_slug_id_value=2375)

Specialty Crops Movement Reporting

<https://www.marketnews.usda.gov/mnp/fv-report-config-step1?type=movement>

Economic Research Service Vegetable and Pulses

<https://www.ers.usda.gov/topics/crops/vegetables-pulses/>

Economic Research Service Fruit and Tree Nuts

<https://www.ers.usda.gov/topics/crops/fruit-tree-nuts.aspx>

National Agricultural Statistics Service, Crops

[https://www.nass.usda.gov/Statistics\\_by\\_Subject/index.php?sector=CROPS](https://www.nass.usda.gov/Statistics_by_Subject/index.php?sector=CROPS)

Refrigerated Truck Quarterly Datasets

<https://www.ams.usda.gov/services/transportation-analysis/agricultural-refrigerated-truck-quarterly-datasets>

Protecting Perishable Foods During Transport by Truck and Rail

<https://edis.ifas.ufl.edu/pdffiles/HS/HS132800.pdf>

### Preferred Citation

U.S. Department of Agriculture, Agricultural Marketing Service. *Agricultural Refrigerated Truck Quarterly Report*. February 2026 Web. <<https://dx.doi.org/10.9752/TS051.02-2026>>

### Photo Credit

Burt Barnes

USDA is an equal opportunity provider, employer, and lender.

[www.ams.usda.gov/services/transportation-analysis/agrtq](https://www.ams.usda.gov/services/transportation-analysis/agrtq)