

Local Meat Capacity Grant Program

USDA's Local Meat Capacity Grant program is building resilience in the meat and poultry supply chain by increasing processing capacity and promoting more competition in the sector. This provides small and mid-sized producers with more local processing options and strengthens their market potential.

2 PROJECT TYPES

Processing Expansion: funds projects to upgrade facilities or purchase equipment to increase processing and rendering capacity.

Simplified Equipment Only: funds equipment purchases for meat and poultry processors.

GOALS

- Increase and diversify meat and poultry processing capacity
- Promote competition
- Build resilience in the supply chain



EXPECTED OUTCOMES



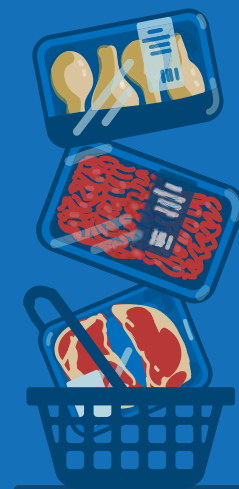
Improved
worker
safety



Increased
producer
income



More jobs
created in
rural areas



More
choices for
consumers

USDA HAS AWARDED OVER

\$55 MILLION IN MEAT & POULTRY
PROCESSING GRANTS

\$39,855,950 for Processing
Expansion projects

\$15,979,434 for Simplified
Equipment-Only projects

Anticipated Increase in Processing

(annual estimates based on applicant pre-award projections)

Bison:

90

Goats:

861

Sheep:

17,982

Swine:

94,547

Poultry:

122,440

Beef:

125,522



660 new jobs

are expected to be created



7,975 new producers

are expected to benefit from these projects



1,710 new local food products

will be sold, creating new markets for producers