

**THE VISUAL AIDS ON THE FOLLOWING  
PAGES ARE FOR REFERENCE ONLY AND  
NOT INTENDED FOR OFFICIAL USE.**

**TO PURCHASE OFFICIAL VISUAL AIDS PLEASE CONTACT  
THE SPECIALTY CROPS INSPECTION DIVISION'S  
EQUIPMENT AND FORMS DEPOT**

**USDA, AMS, FVP, SCI  
831 MITTEN ROAD, ROOM 200  
BURLINGAME, CA 94010  
PHONE: 650-552-9073  
FAX: 650-552-9147**

**[EQUIPMENT CATALOG](#)**

# KIWIFRUIT



**DISCOLORATION (caused by water staining)**

**FOR IDENTIFICATION ONLY**

**KWI-1-IDENT  
DISCOLORATION BY WATER STAINING  
JUNE 1990 (Previously October 1986)**

## Flatsided Versus Round or Oval Shaped Kiwifruit

### Kiwifruit with Flat Side

(Figures 1 and 2)

Width cannot exceed height.

Flat side



1

Flat side



2

### Kiwifruit without Flat Side Round or Oval Shaped

(Figures 3 to 6)

Disregard width and height.



3



4



5



6

## KIWIFRUIT



**WELL FORMED**



**WELL FORMED**

**KWI-CP-2  
FORM  
JUNE 1990 (Previously 1986)**



## KIWIFRUIT



**FAIRLY WELL FORMED (SIDE VIEW)**



**FAIRLY WELL FORMED (SIDE VIEW)**



**FAIRLY WELL FORMED (END VIEW)**



**FAIRLY WELL FORMED (END VIEW)**

**KWI-CP-3  
FORM  
JUNE 1990 (Previously 1986)**

## KIWIFRUIT



**FAIRLY WELL FORMED (SIDE VIEW)**



**FAIRLY WELL FORMED (END VIEW)**

**KWI-CP-3-A  
FORM  
JUNE 1990 (Previously 1986)**



# KIWIFRUIT



**CULL (TOP VIEW)**



**CULL (END VIEW)**

# KIWIFRUIT



**CULL (TOP VIEW)**

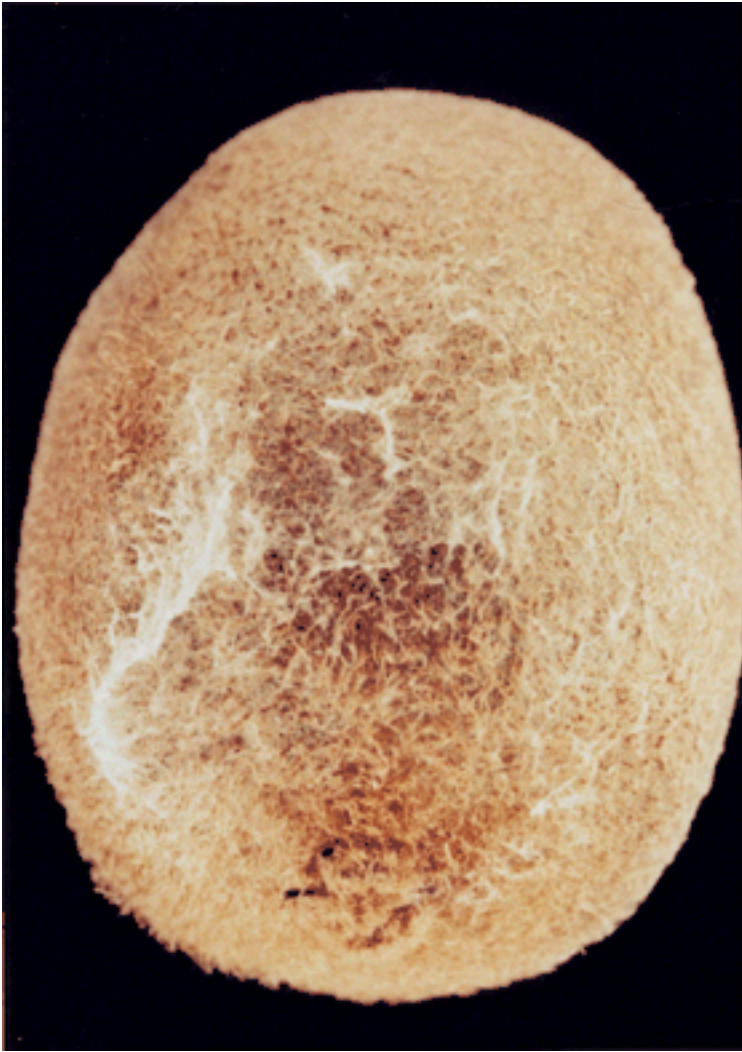


**CULL (END VIEW)**

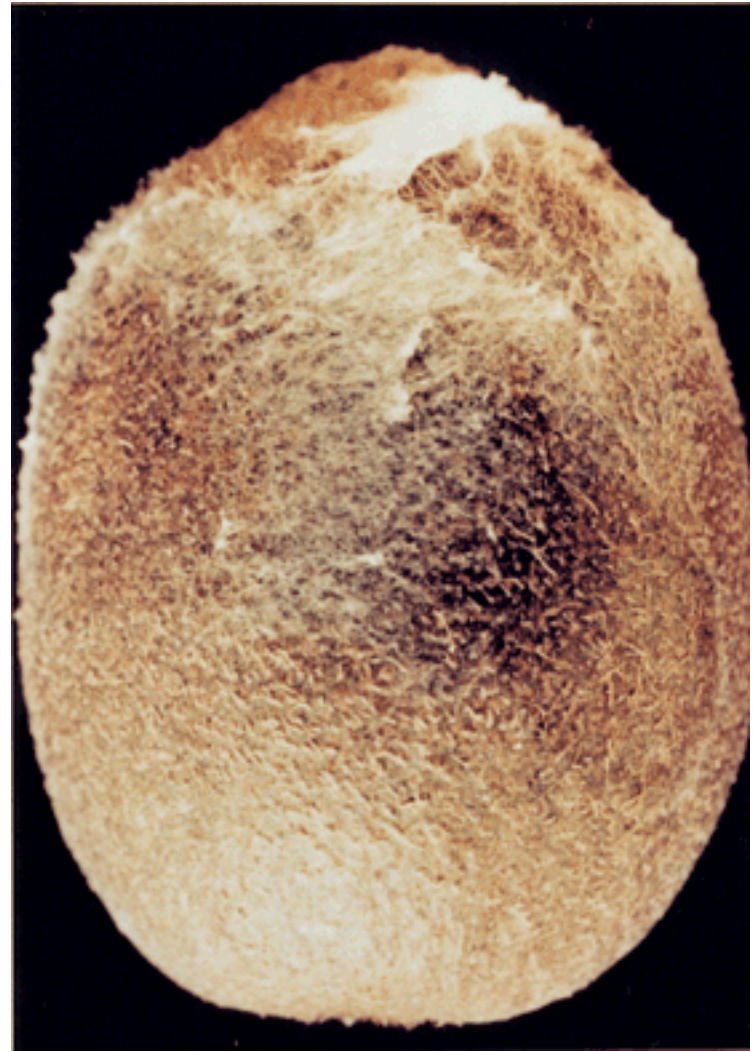
**KWI-CP-4-A  
FORM  
JUNE 1990 (Previously 1982, PAGE 2)**



## KIWIFRUIT



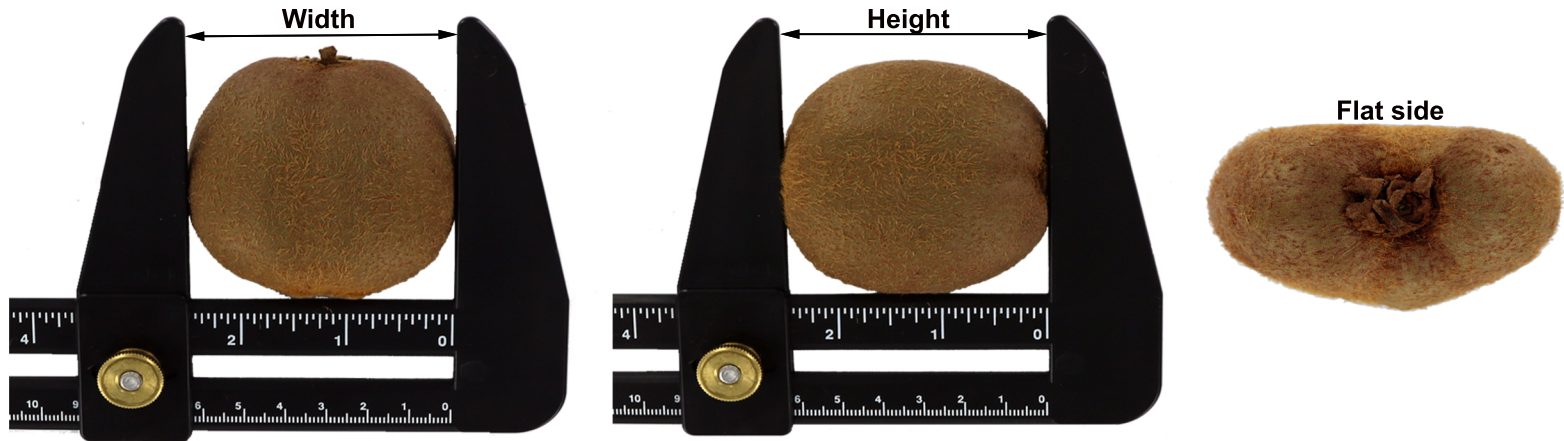
U.S. NO. 1



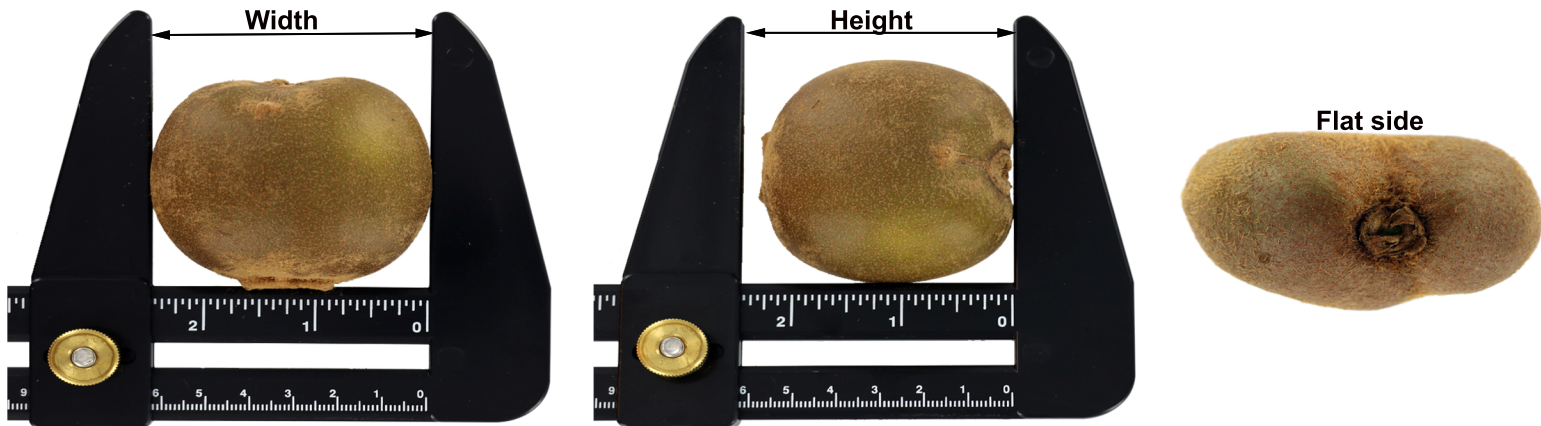
U.S. NO. 2

KWI-CP-5  
MOLD  
JUNE 1990 (Previously August 1982)

## Width Versus Height on Flat Kiwifruit



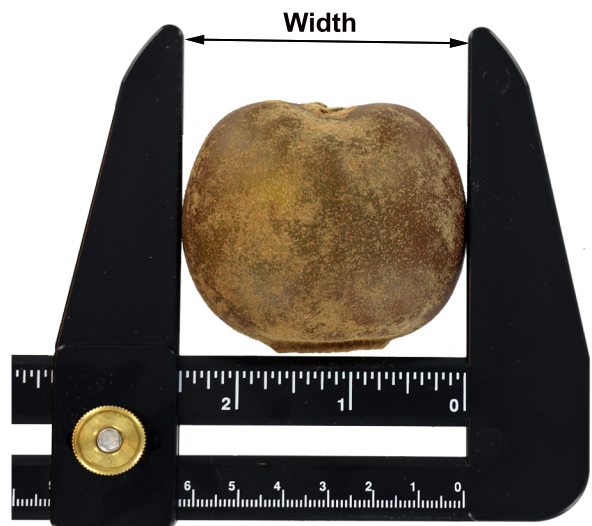
When the kiwifruit has a flat side as shown on the top right, the width cannot exceed the height. Since width does not exceed the height, this fruit is considered “Not badly misshapen” and meets U.S. No. 2.



When the kiwifruit has a flat side as shown on the bottom right, the width cannot exceed the height. Since width does exceed the height, this fruit is considered “Badly misshapen” and is a cull.



## Width Versus Height on Round or Oval Shaped Kiwifruit



**When the kiwifruit does not have a flat side as shown on the right, disregard width and height. This fruit is considered “Fairly well formed” and meets U.S. No. 1.**