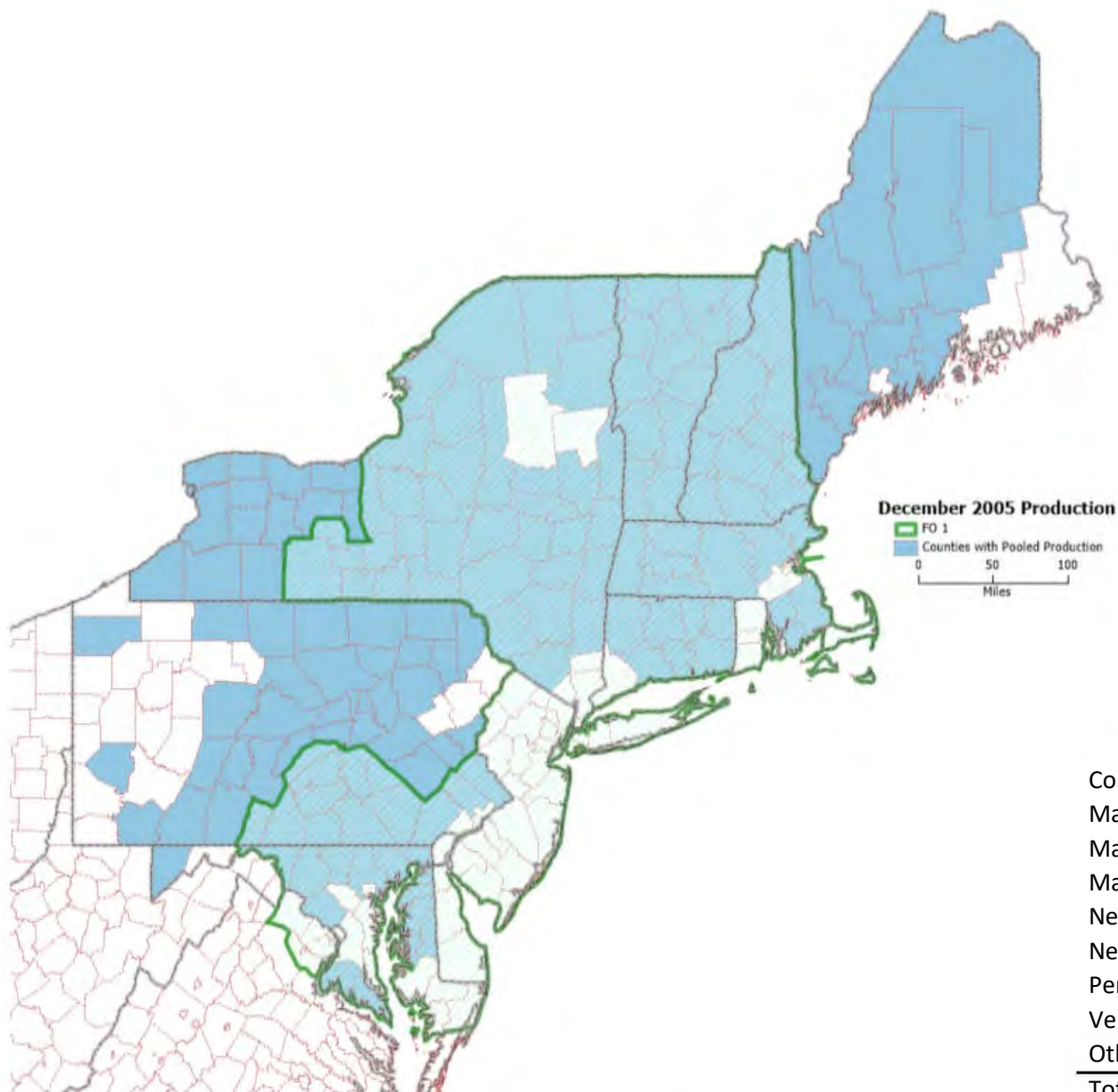


Producer Milk By County

December 2005

Maps Prepared by USDA – AMS – Dairy Program



Total Pounds by State	
1,000 lbs	
Connecticut	30,272
Maine	46,906
Maryland	81,684
Massachusetts	22,229
New Hampshire	23,528
New York	827,249
Pennsylvania	656,131
Vermont	218,903
Other	90,727
Total	1,997,629

Restricted states include: Delaware, Indiana, Michigan, New Jersey, North Carolina, Ohio, Rhode Island, Virginia, West Virginia, Wisconsin

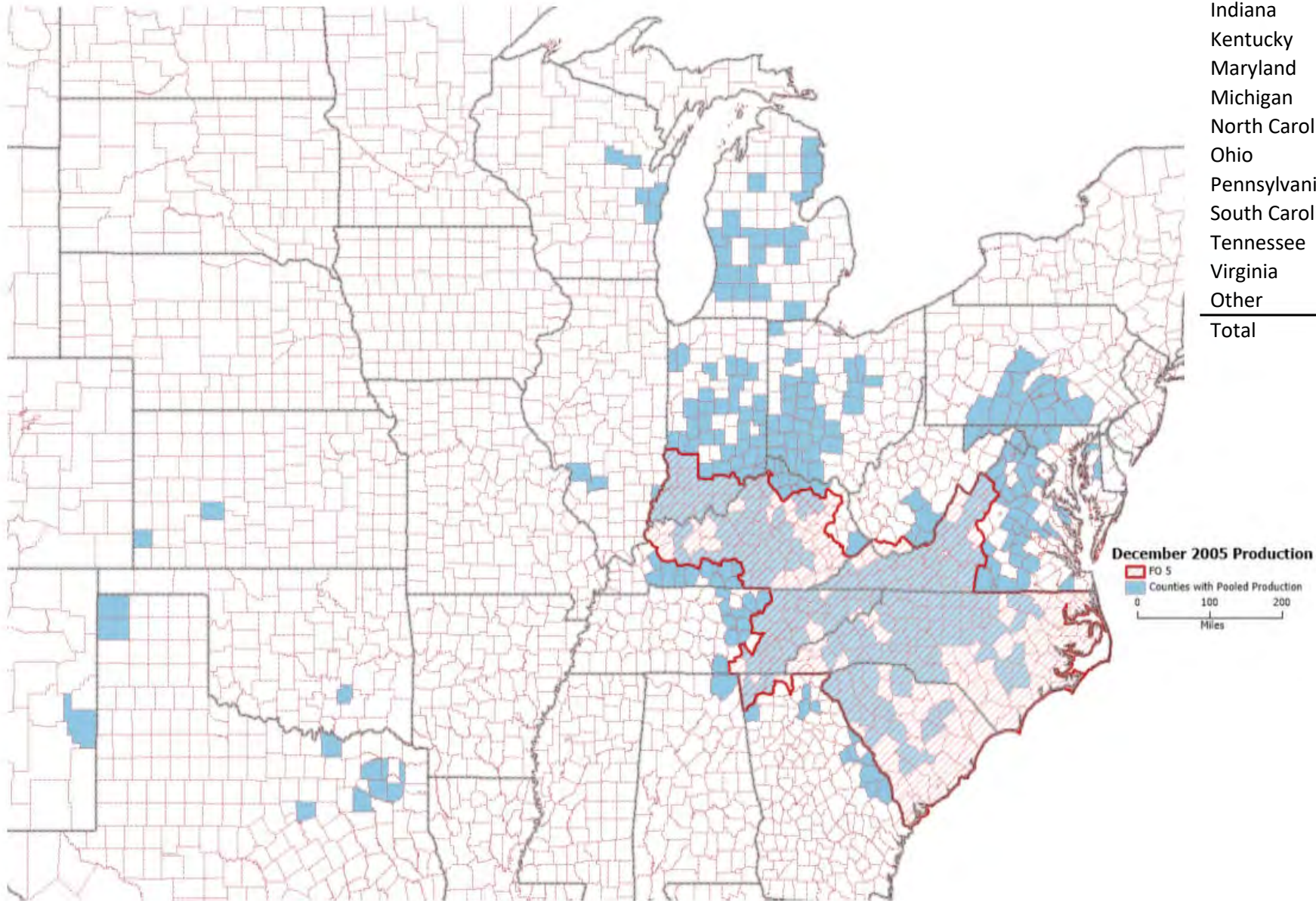
Each Federal Milk Market Order may present data differently while maintaining confidentiality. Differences among the maps reflect this.
 *FO 1 data are rounded to 1,000 pounds based on FO 1 reporting format.

Producer Milk by County - December 2005
 Appalachian Marketing Area – FO 5

Exhibit 54

Total Pounds by State

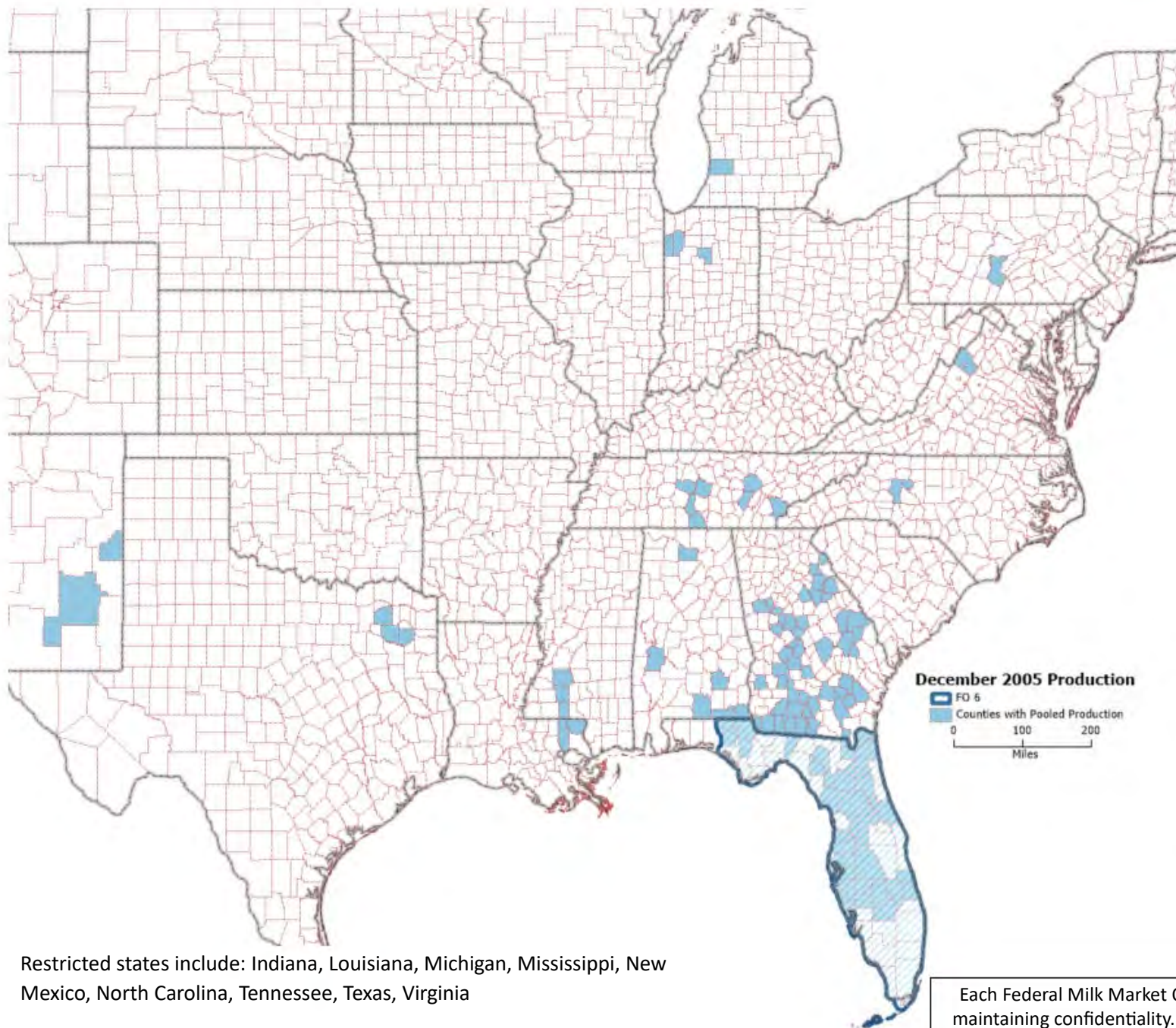
Georgia	2,766,867
Indiana	53,440,113
Kentucky	67,985,409
Maryland	6,776,356
Michigan	41,364,742
North Carolina	76,275,469
Ohio	17,468,188
Pennsylvania	40,860,102
South Carolina	23,443,853
Tennessee	48,410,968
Virginia	96,349,718
Other	54,409,236
Total	529,551,021



Restricted states include: Alabama, Illinois, Kansas, New Mexico, Oklahoma, Texas, West Virginia, Wisconsin

Each Federal Milk Market Order may present data differently while maintaining confidentiality. Differences among the maps reflect this.

Producer Milk by County - December 2005
 Florida Marketing Area – FO 6



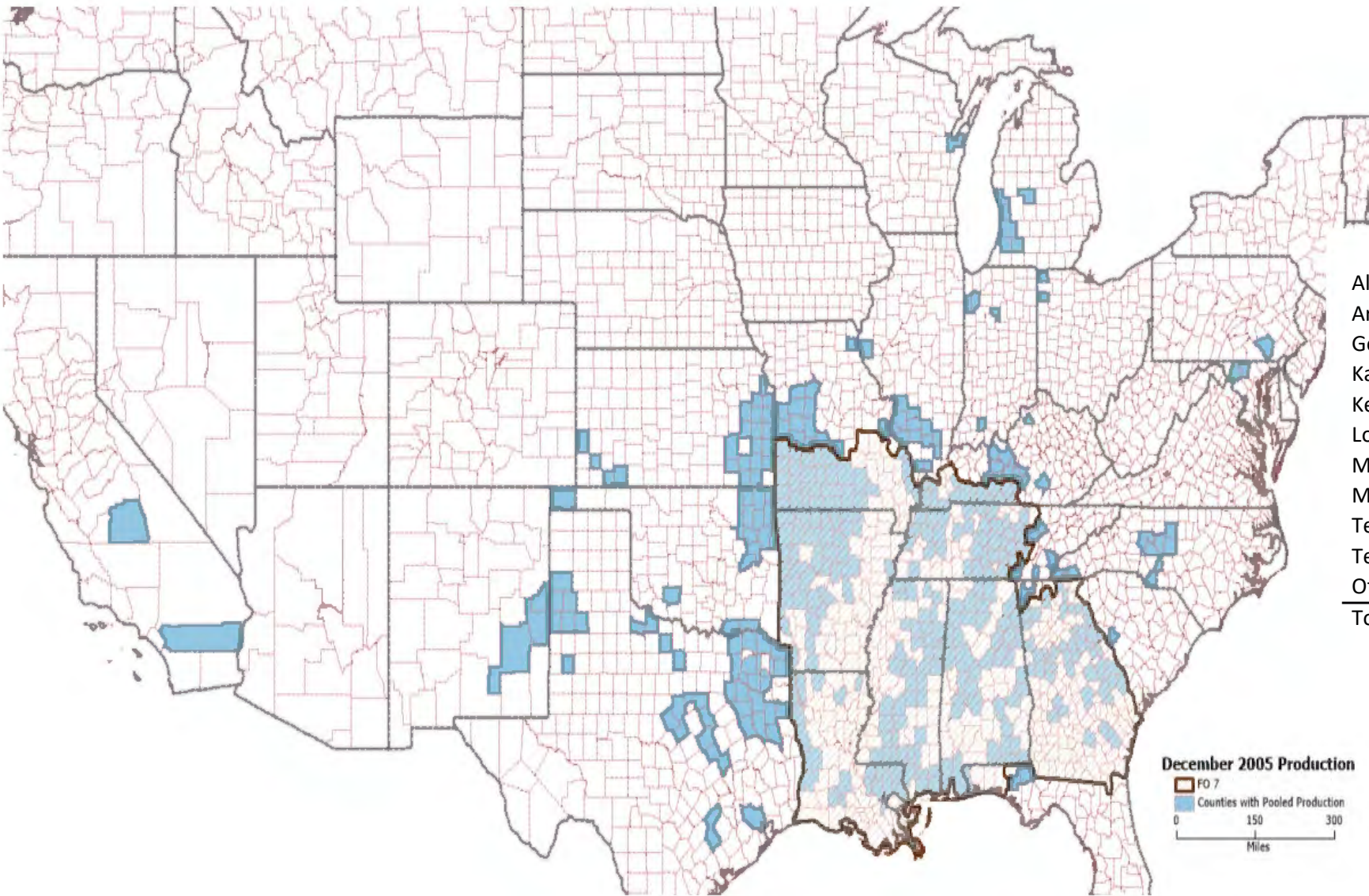
December 2005 Production
 FO 6
 Counties with Pooled Production
 0 100 200
 Miles

Total Pounds by State	
Alabama	3,771,478
Florida	182,798,350
Georgia	59,351,102
Other	16,124,992
Total	262,045,922

Restricted states include: Indiana, Louisiana, Michigan, Mississippi, New Mexico, North Carolina, Tennessee, Texas, Virginia

Each Federal Milk Market Order may present data differently while maintaining confidentiality. Differences among the maps reflect this.

Producer Milk by County - December 2005
 Southeast Marketing Area – FO 7



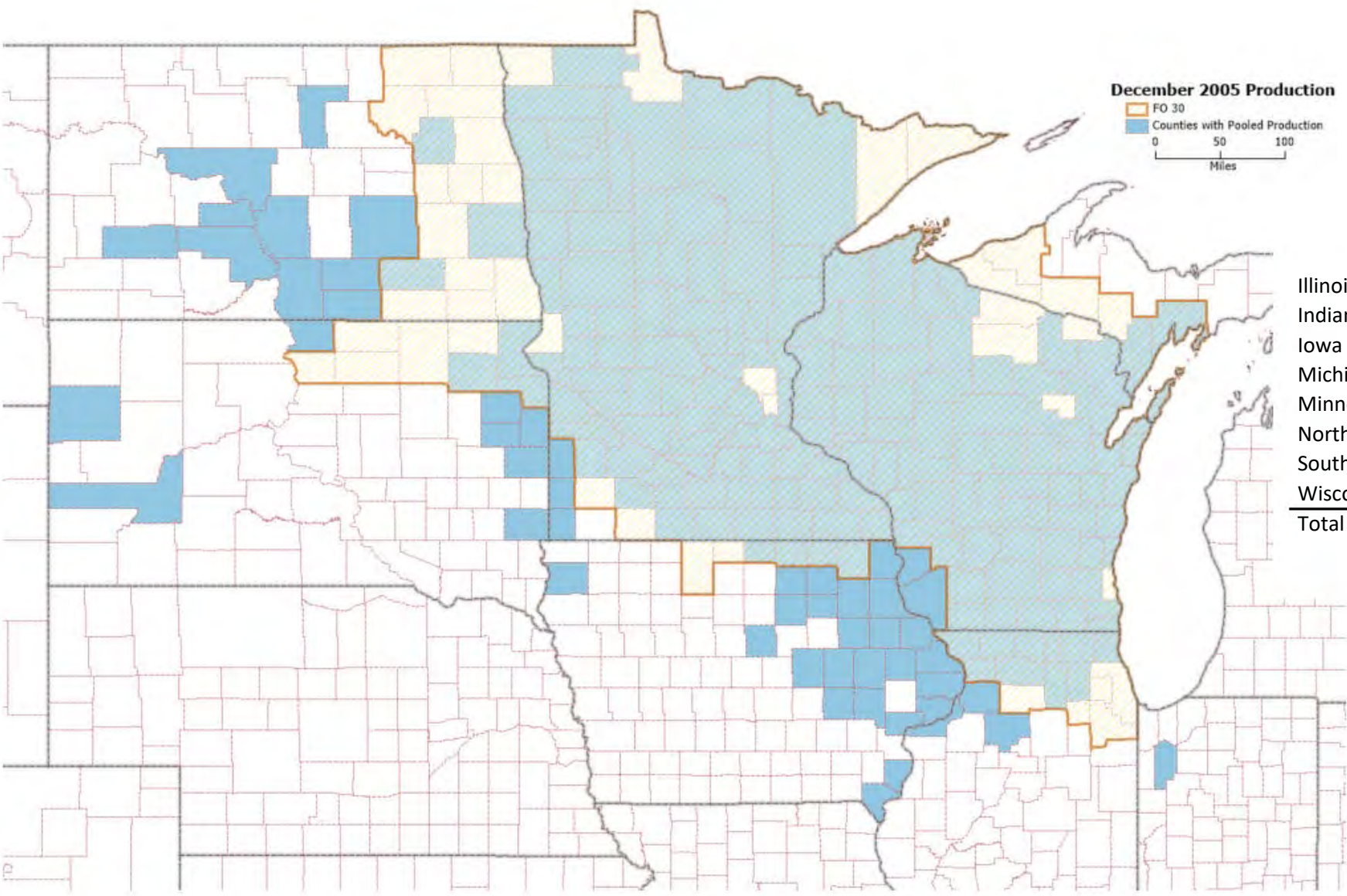
Total Pounds by State	
Alabama	13,838,886
Arkansas	19,946,956
Georgia	50,568,090
Kansas	11,836,555
Kentucky	40,318,755
Louisiana	32,122,425
Mississippi	28,877,337
Missouri	89,924,306
Tennessee	37,768,679
Texas	115,584,677
Other	186,267,370
Total	627,054,036

December 2005 Production
 FO 7
 Counties with Pooled Production
 0 150 300
 Miles

Restricted states include: California, Florida, Illinois, Indiana, Maryland, Michigan, New Mexico, North Carolina, Ohio, Pennsylvania, South Carolina, Virginia, Wisconsin

Each Federal Milk Market Order may present data differently while maintaining confidentiality. Differences among the maps reflect this.

Producer Milk by County - December 2005
 Upper Midwest Marketing Area – FO 30

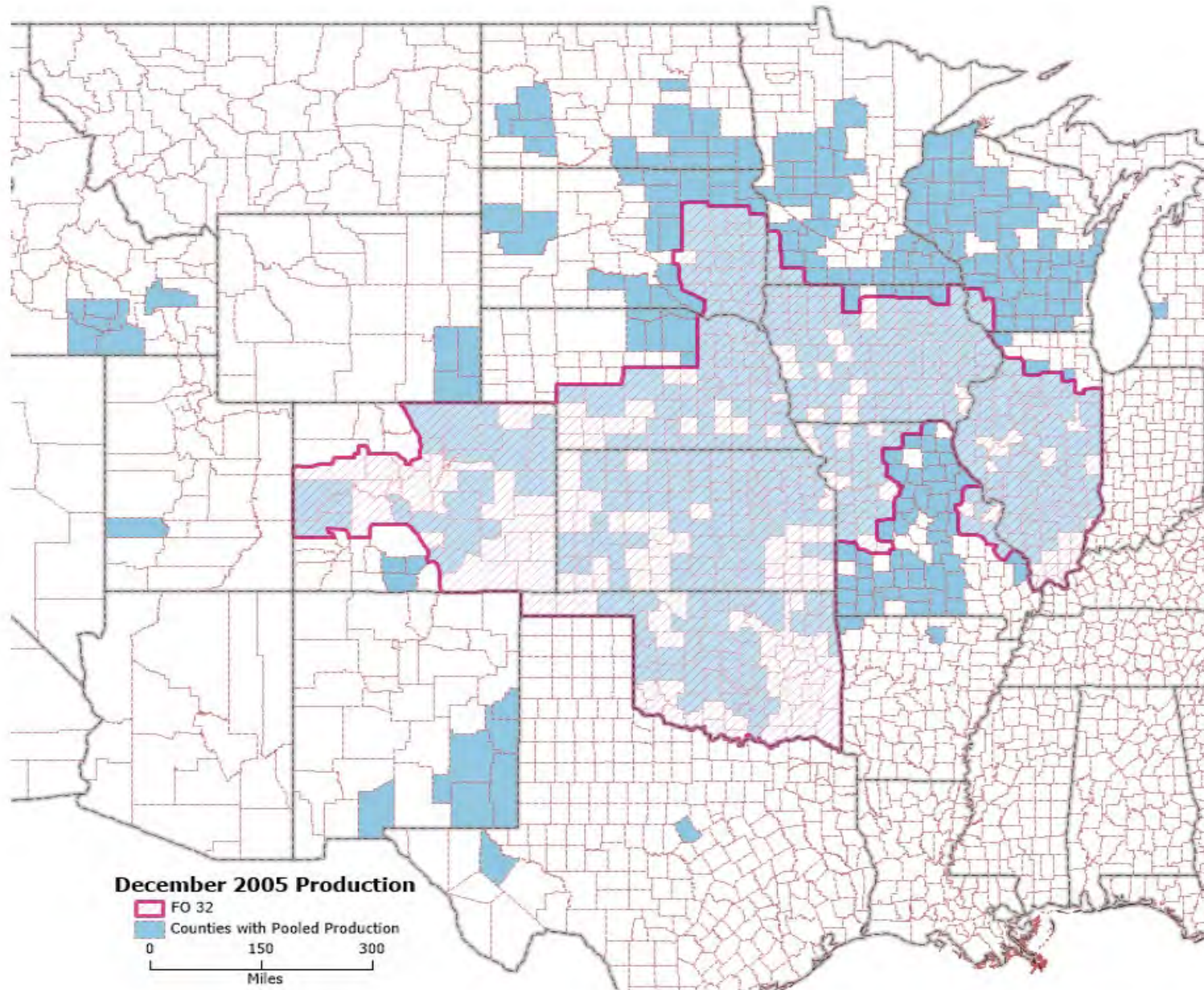


Total Pounds by State	
Illinois	55,852,843
Indiana	391,934
Iowa	86,599,931
Michigan	5,106,274
Minnesota	580,486,777
North Dakota	15,224,695
South Dakota	38,802,229
Wisconsin ^{1/}	1,394,804,333
Total	2,177,269,016

^{1/} Restricted OH included in WI

Each Federal Milk Market Order may present data differently while maintaining confidentiality. Differences among the maps reflect this.

Producer Milk by County - December 2005
 Central Marketing Area – FO 32

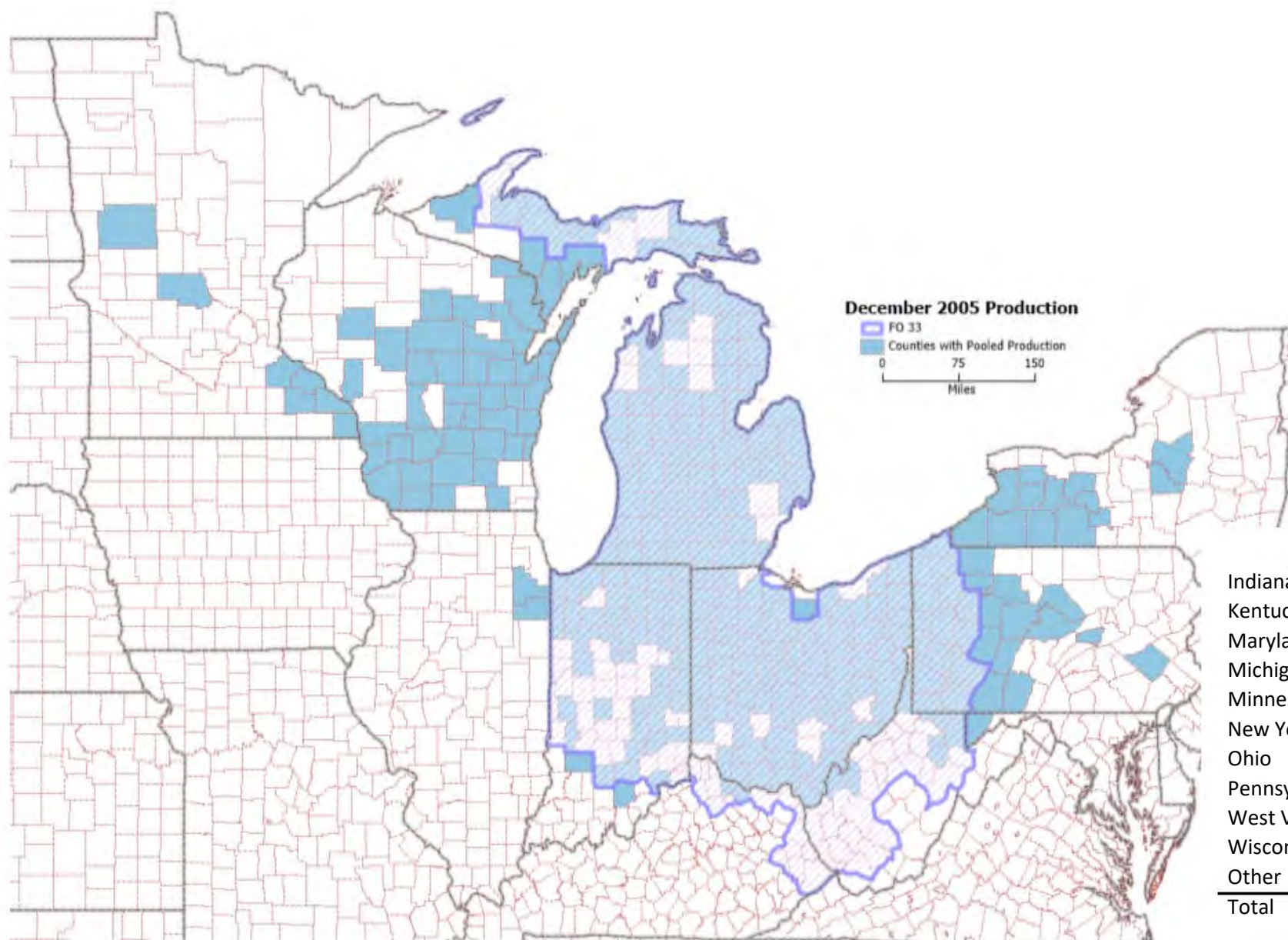


Total Pounds by State	
Colorado	183,519,043
Iowa	249,506,358
Idaho	19,414,575
Illinois	87,261,397
Kansas	153,089,661
Minnesota	63,930,218
Missouri	49,955,307
Nebraska	88,643,155
North Dakota	5,560,395
Oklahoma	23,714,164
South Dakota	71,202,400
Wisconsin	221,608,391
Wyoming	3,960,088
Other	95,957,906
Total	1,317,323,058

Restricted states include: Arkansas, Indiana, Kentucky, New Mexico, Ohio, Tennessee

Each Federal Milk Market Order may present data differently while maintaining confidentiality. Differences among the maps reflect this.

Producer Milk by County - December 2005
 Midwest Marketing Area – FO 33

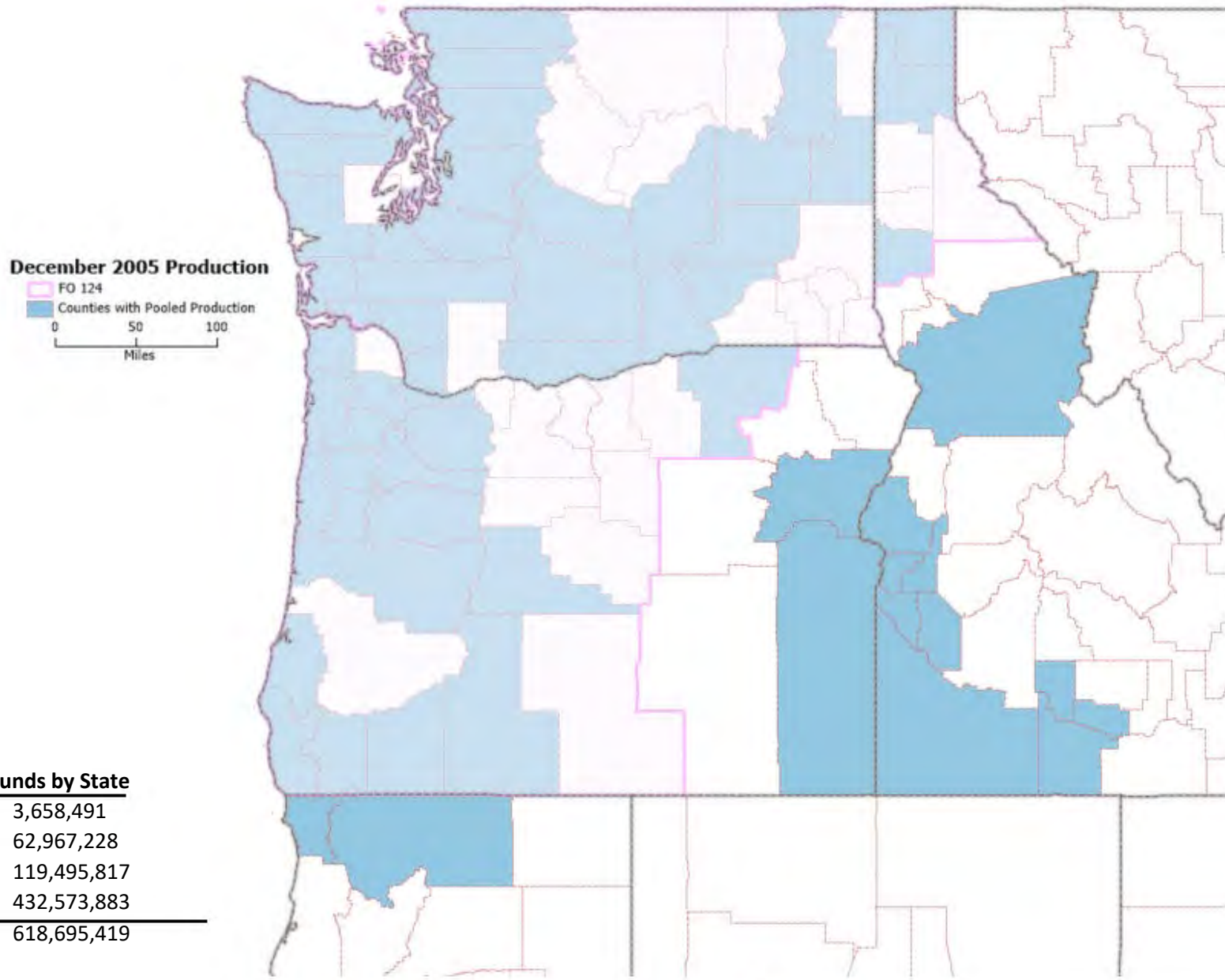


<u>Total Pounds by State</u>	
Indiana	147,078,126
Kentucky	1,605,666
Maryland	4,055,431
Michigan	500,954,920
Minnesota	5,757,643
New York	127,510,793
Ohio	333,025,480
Pennsylvania	116,430,942
West Virginia	5,320,732
Wisconsin	187,076,812
Other	12,494,505
Total	1,441,311,050

Restricted states include: Illinois, Iowa

Each Federal Milk Market Order may present data differently while maintaining confidentiality. Differences among the maps reflect this.

Producer Milk by County - December 2005
 Pacific Northwest Marketing Area – FO 124

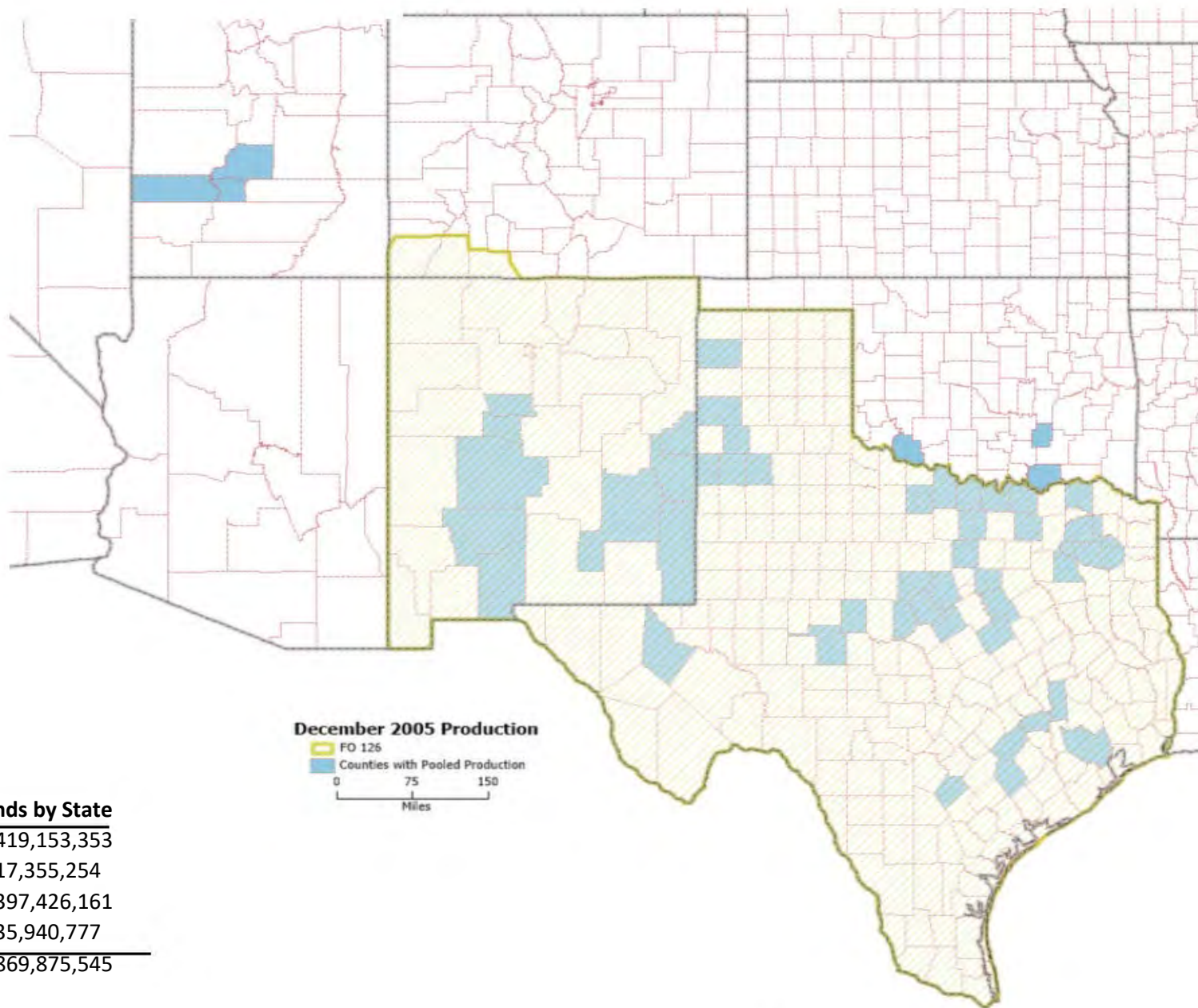


Total Pounds by State

California	3,658,491
Idaho	62,967,228
Oregon	119,495,817
Washington	432,573,883
Total	618,695,419

Each Federal Milk Market Order may present data differently while maintaining confidentiality. Differences among the maps reflect this.

Producer Milk by County - December 2005
 Southwest Marketing Area – FO 126



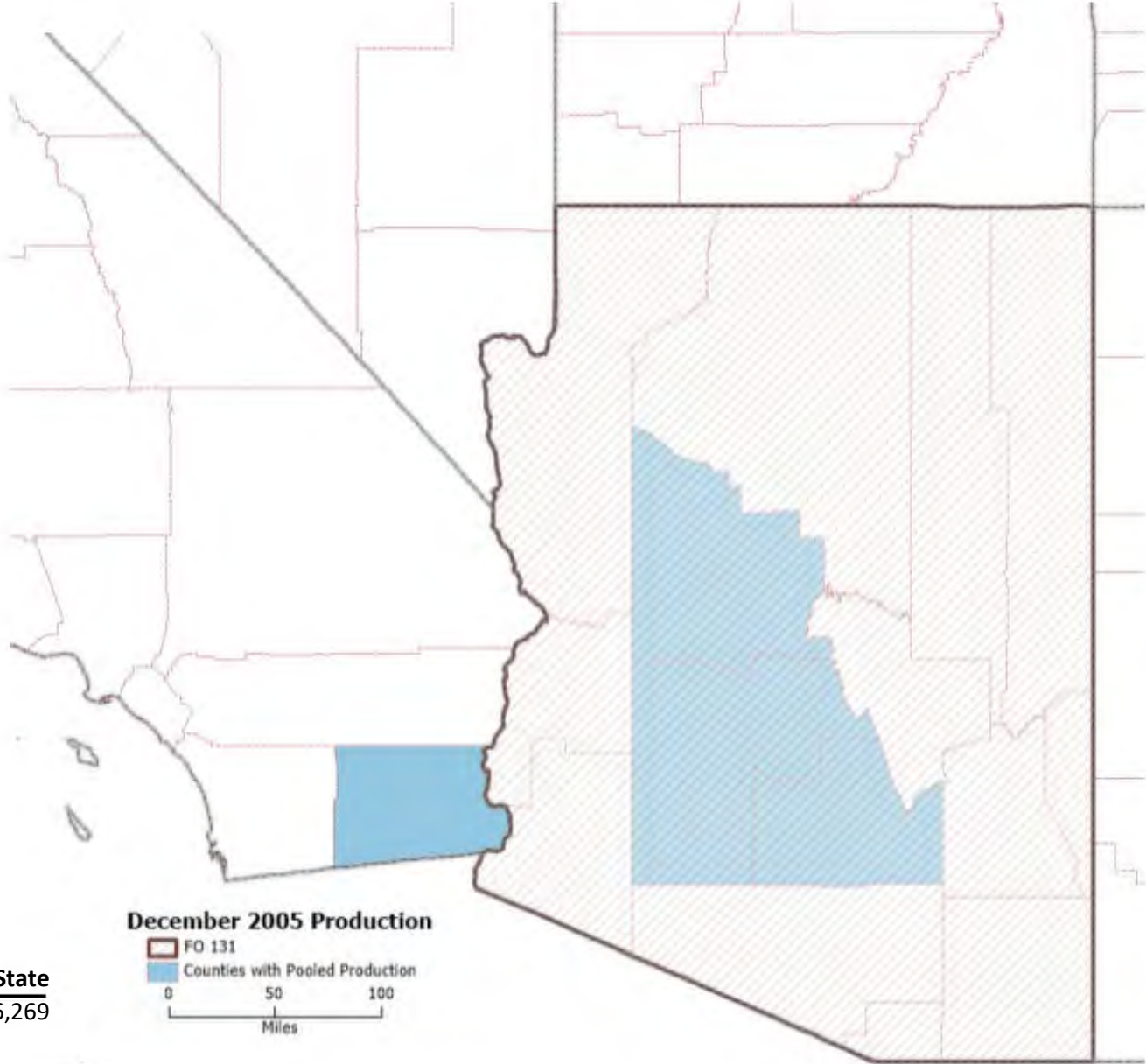
Total Pounds by State

New Mexico	419,153,353
Oklahoma	17,355,254
Texas	397,426,161
Other	35,940,777
Total	869,875,545

Restricted states include: Arkansas, Arizona, Kansas, Louisiana, Nevada, Utah

Each Federal Milk Market Order may present data differently while maintaining confidentiality. Differences among the maps reflect this.

Producer Milk by County - December 2005
 Arizona Marketing Area – FO 131



Total Pounds by State	
Arizona ^{1/}	257,306,269
California	^{1/}
Total	257,306,269

December 2005 Production
 FO 131
 Counties with Pooled Production
 0 50 100
 Miles

^{1/}Restricted CA included in AZ

Each Federal Milk Market Order may present data differently while maintaining confidentiality. Differences among the maps reflect this.