



United States Department of Agriculture

Agricultural
Marketing
Service

Federal Grain Inspection
Service

Field Management
Division

1400 Independence Ave.
SW, Stop 3630
Washington, D.C. 20250

Voice (202) 720-0228
Fax (202) 690-3951

Hotline 1-800-998-3447

Reference #289

January 12, 2022

TO: FGIS POLICY BULLETIN BOARD

FROM: Anthony Goodman, Director
Field Management Division

SUBJECT: New Phytosanitary Requirements for Australia

ORIGINATING OFFICE: Policies, Procedures, and Market Analysis Branch

1. PURPOSE

Per request of USDA's-Animal and Plant Health Inspection Service (APHIS), this memorandum establishes expanded phytosanitary inspection instructions for official personnel (Federal Grain Inspection Service (FGIS) and Official Agency personnel) applicable to wheat, soybeans, rice, peas, beans, or lentils shipped to Australia.

2. BACKGROUND

The Government of Australia-Department of Agriculture, Water, and the Environment issued new requirements for reducing the risk of khapra beetle (*Trogoderma granarium*) from entering Australia, effective from September 30, 2021. The new import conditions apply to wheat, soybeans, rice, peas, beans, and lentils, among other plant products. Read the Alert on the link below:

<https://bicon.agriculture.gov.au/BiconWeb4.0/ViewElement/Element/Alert?elementPk=1641940>

The genus *Trogoderma* currently has more than 150 known species of which Khapra beetle is but one. The Australian regulations list 12 species of *Trogoderma* as being a biosecurity concern, listed on the link below:

<https://www.agriculture.gov.au/pests-diseases-weeds/plant/khapra-beetle/urgent-actions#trogoderma-species-of-concern>

3. POLICY

All shipments of wheat, soybeans, rice, peas, beans, or lentils to Australia must have a prior-to-loading stowage exam of the carrier. All shipments of wheat, soybeans, rice, peas, beans, or lentils to Australia are required to be inspected for members of the genus *Trogoderma*. Upon completion of the inspection, a statement must be placed in the Remarks section of FGIS 921-2 according the procedures below.

4. PROCEDURES

- a. Prior to loading, official personnel must conduct an official stowage examination in accordance with FGIS Directive 9180.48, Stowage Examination Services. Issue an Official Stowage Examination Certificate upon request. This is required for all grains and commodities.

Note: A stowage exam remains permissive and must be requested under the Agriculture Marketing Act of 1946 (AMA) for commodities and processed products, however a stowage exam is required to comply with this protocol applicable to Australia.

- b. During loading, official personnel must perform a phytosanitary Inspection in accordance with FGIS Directive 9180.35, Phytosanitary Inspection.
 - (1) Official personnel must specifically look for evidence of *Trogoderma* insects.
 - (2) Inspect for **ANY** *Trogoderma* insect evidence: live *Trogoderma* insects, dead *Trogoderma* insects, and the shed larval stage skins (a.k.a. exuviae, exoskeleton) of *Trogoderma* insects. Attachment 1 provides pictures of the adult stage of 10 species of interest, and examples of larval and shed skin stages.
- c. After loading official personnel must complete the FGIS 921-2 Insects in Grain Report:
 - (1) If no *Trogoderma* insects, whether alive, dead, or exuviae were found, place the following statement in the remarks section of the 921-2:

“Representative samples were inspected and found free from evidence of any species of *Trogoderma* (alive, dead or exuviae) in Australia’s list of *Trogoderma* species of biosecurity concern.”

- (2) If **ANY** evidence of Trogoderma (alive, dead or exuviae) were found, forward them to APHIS for identification before certifying. Contact the local APHIS Export Certification Specialist (ECS) for assistance. The ECS may refer official personnel to an authorized local university or another APHIS office. Official personnel may obtain the local ECS contact information at this APHIS website: https://www.aphis.usda.gov/aphis/ourfocus/planthealth/SA_Export/CT_Export_Cerification_Specialists. Select the State in the drop-down menu in the middle of the page.

Note: These additional protocols have been made mandatory by Australia and are a requirement for the issuance of a phytosanitary certificate. Shippers should be aware of these requirements but may need to be reminded.

5. FILING INSTRUCTIONS

File a copy of this memo with the FGIS Directive 9180.35, Phytosanitary Inspection. Field office managers must ensure that a copy of this memorandum was received by all official agencies operating within their circuit. FGIS encourages official service providers to share this policy notice with applicants for service in the case of wheat, soybeans, rice, peas, beans, or lentils bound for Australia. Direct any questions regarding this procedure to the local field office or to the Policies, Procedures, and Market Analysis Branch (202) 720-0228.

6. QUESTIONS

Direct any questions regarding this procedure to the local field office or to the Policies, Procedures, and Market Analysis Branch (202) 720-0228.

Attachments



Trogonderma granarium

Trogonderma versicolor

Trogonderma anthrenoides



Trogonderma sternale

Trogonderma inclusum

Trogonderma ornatum



Trogoderma simplex



Trogoderma grasmani



Trogoderma longisetosum



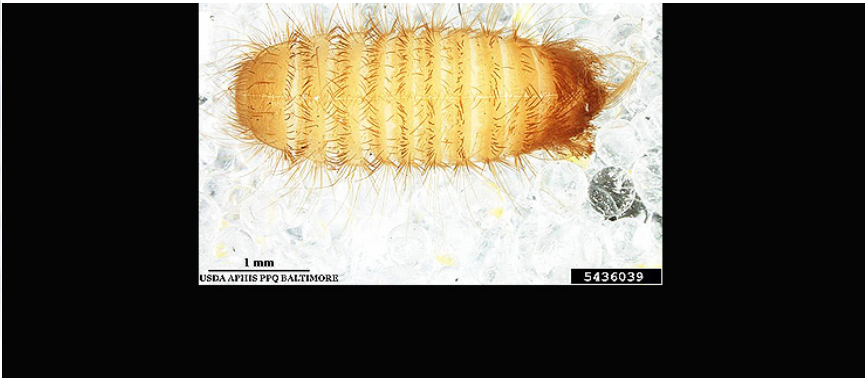
Trogoderma angustum



Shed skin example



shutterstock.com · 761356288



Larvae examples