

Composite products - meat

Composite products
containing processed
meat product
(regardless of
percentage)

The country of origin of the meat product must be

- the same as the country of export of the composite product; or
- an EU country; or
- another third country with a similar health status to that of the country of origin of the composite product¹

Meat product must come from an EU approved establishment (the composite product does not have to come from an approved establishment);

Must be heat treated in accordance with the requirements of Commission Decision 2007/777/EC

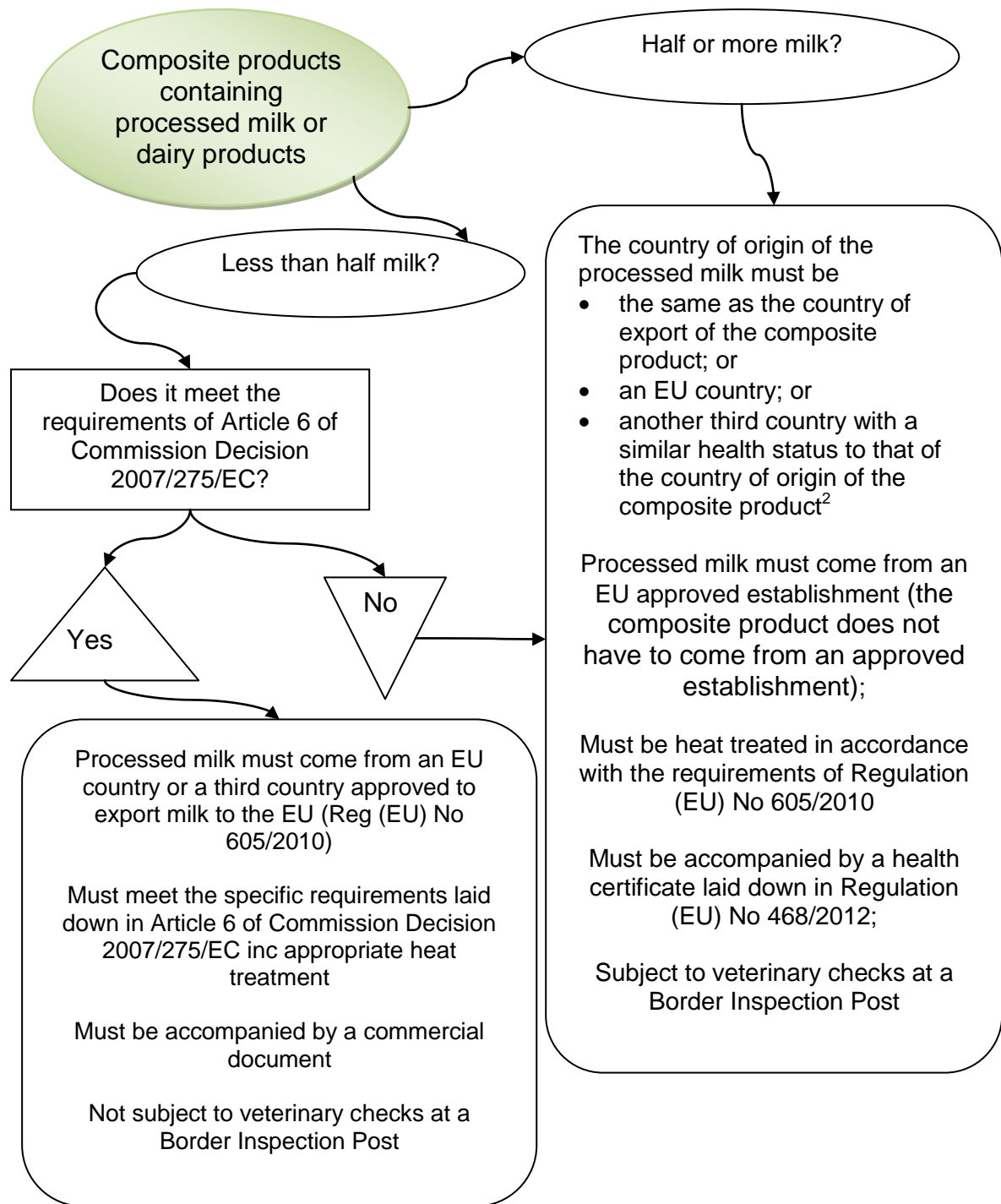
Must be accompanied by a health certificate laid down in Regulation (EU) No 468/2012;

Bovine, ovine and caprine meat must meet relevant BSE requirements;

Subject to veterinary checks at a Border Inspection Post

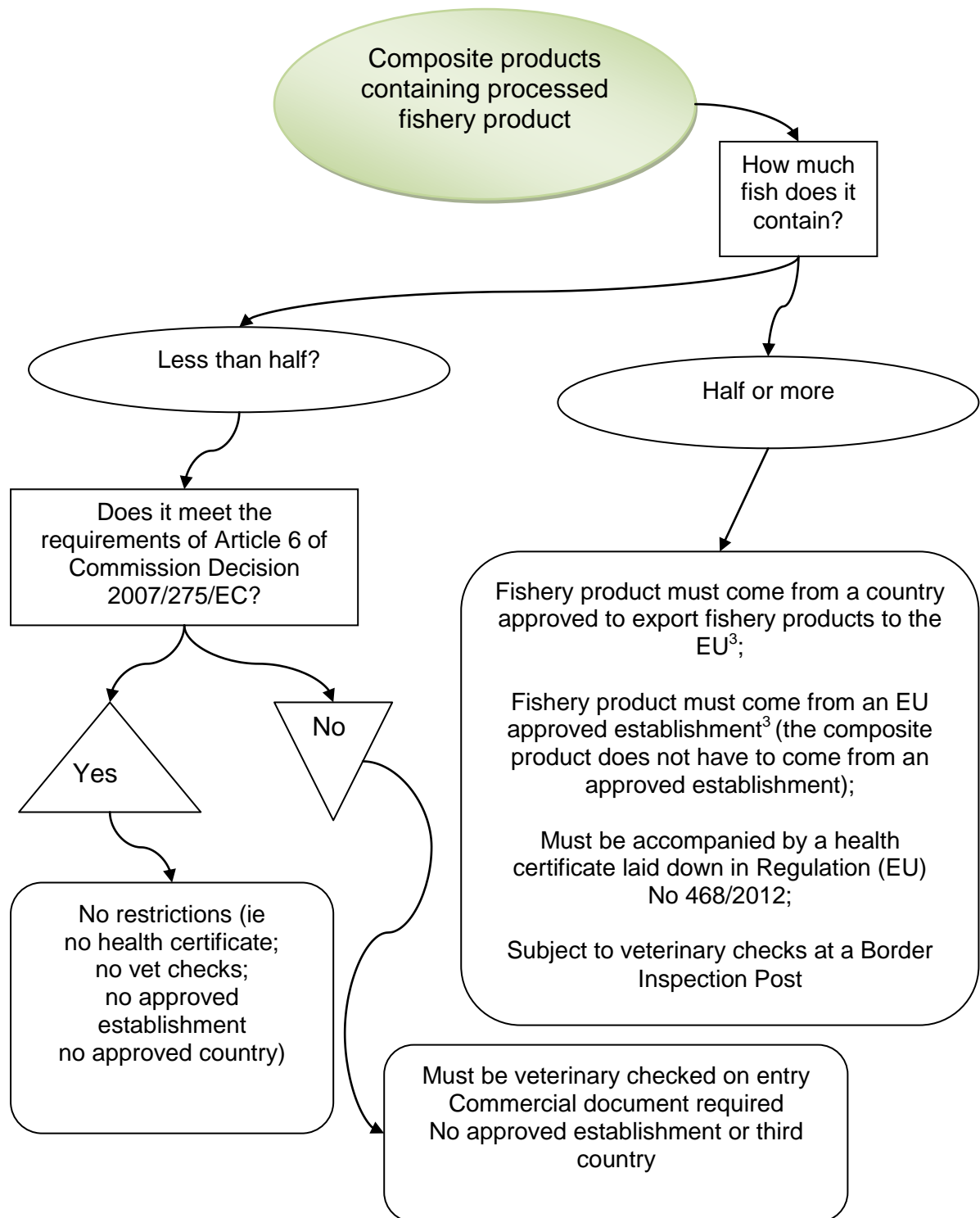
¹ must be a third country or parts thereof authorised to export to the EU meat products treated with treatment 'A' as set out in Annex II, Part 2 to Decision 2007/777/EC, where the third country in which the composite product is produced is also authorised to export to the Union meat products treated with that treatment.

Composite products – milk and dairy products



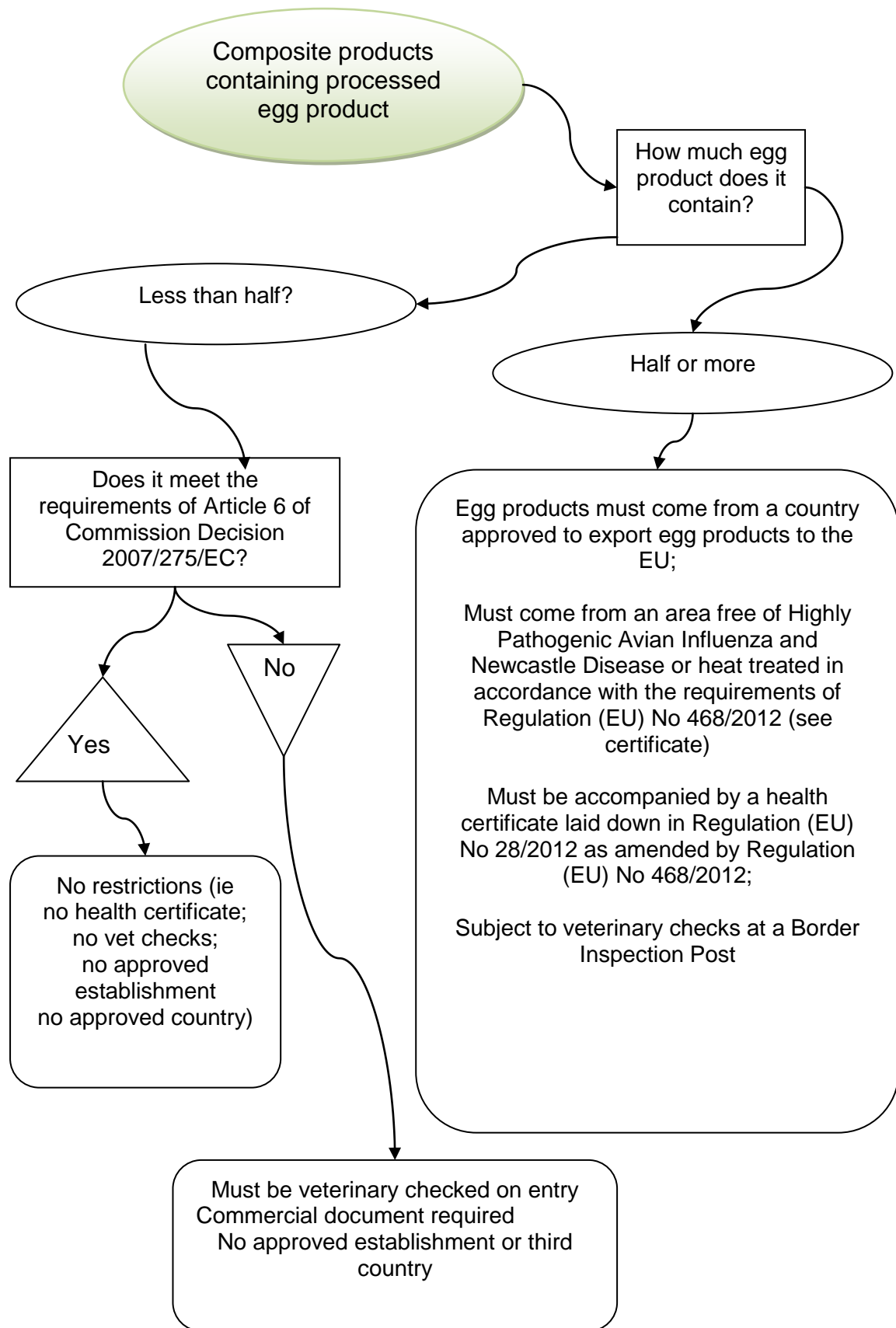
² must be a third country authorised to export to the Union milk and dairy products in Columns A or B of Annex I to Regulation (EU) No 605/2010 where the third country in which the composite product is produced is also authorised, under the same conditions to export to the Union.

Composite products – fish



³if an aquaculture product, the country needs to be on the list in Commission Decision 2011/163/EU and the establishment have the Aq reference

Composite products – Egg



Composite products – other than meat, milk, fish and egg

