

# National Weekly Cattle And Beef Summary

Des Moines, Iowa  
For Week Ending:

Mon Nov 12, 2018  
11/9/2018

## USDA Livestock, Poultry & Grain Market News

This Week Prior Week Last Year

### LM\_XB463

#### NATIONAL COMPREHENSIVE BOXED BEEF

CUTOUT VALUES	212.70	210.97	205.77
Primal Rib	389.93	389.82	364.48
Primal Chuck	169.11	167.41	170.26
Primal Round	173.88	172.00	172.96
Primal Loin	267.96	265.71	257.52

### WEEKLY COMPREHENSIVE ITEM SUMMARY

Select & Choice Spot Market Loads	454
Comprehensive Loads	3199
CH&SE Percent of the Comprehensive	14%

### GROUND BEEF and TRIMMINGS EFFECT ON BEEF CUTOUT

	Per Cwt	GB/Trim % of Cutout Values
Comprehensive Cutout	212.70	14.08%
Rib	389.93	2.58%
Chuck	169.11	27.89%
Round	173.88	20.33%
Loin	267.96	4.71%
Brisket	180.11	6.67%
Short Plate	139.31	28.72%
Flank	106.47	22.59%

### LM\_CT169

#### DIRECT CATTLE PREMIUM AND DISCOUNTS

Prime	9.65	9.69	15.87
Choice	0.00	0.00	0.00
Select	(15.35)	(13.95)	(15.44)
Standard	(31.71)	(30.36)	(28.62)
CAB	4.61	4.61	4.90

### LM\_CT150

#### 5 AREA WEEKLY WEIGHTED CATTLE PRICE

Live Steer	113.70	114.95	122.71
Live Heifer	113.68	115.22	123.17
Dressed Steer	179.16	180.27	191.62
Dressed Heifer	179.76	180.00	191.39

### NW\_LS441

#### USDA BY-PRODUCT DROP VALUE (STEER)

9.12	9.05	10.13
------	------	-------

### SJ\_LS712

#### WEEKLY ESTIMATED BEEF PRODUCTION

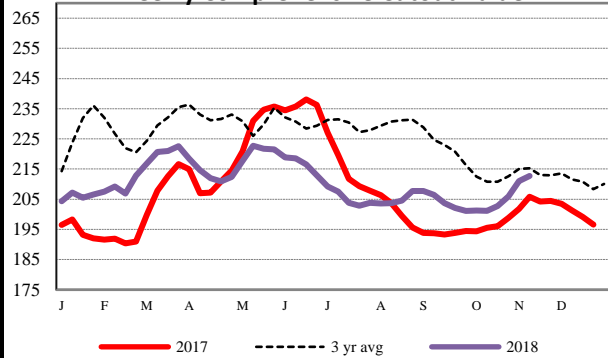
11/9/2018	(Estimate)	(Estimate)	(Actual)
Slaughter	640,000	643,000	624,000
Live Weights	1365	1368	1372
Dressed Weights	824	827	830
Beef Production (mil lbs)	526.4	530.6	516.6

### NW\_LS196

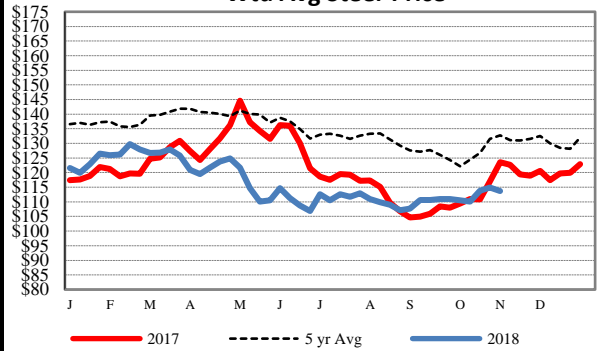
#### WEEKLY STEER HEIFER GRADING REPORT

Week Ending:	Nov 02, 2018		
<b>Quality Grades for All Regions</b>			
Prime	8.96%	8.58%	6.06%
Choice	70.84%	70.95%	69.22%
Select	17.14%	17.77%	19.78%
<b>Grading by State</b>			
	<u>Nebraska</u>	<u>Kansas</u>	<u>Texas</u>
Prime	11.47%	7.15%	3.24%
Choice	72.76%	74.79%	63.84%
Select	12.14%	16.27%	30.22%

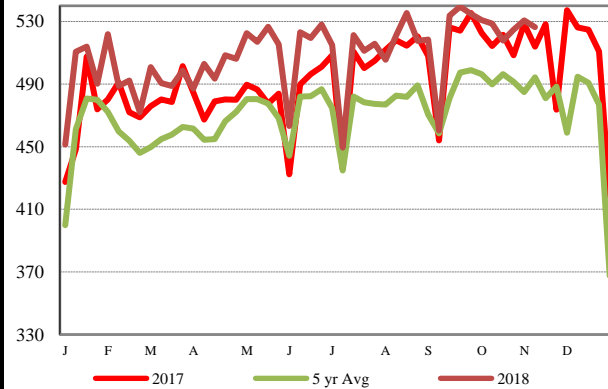
### Weekly Comprehensive Cutout Value



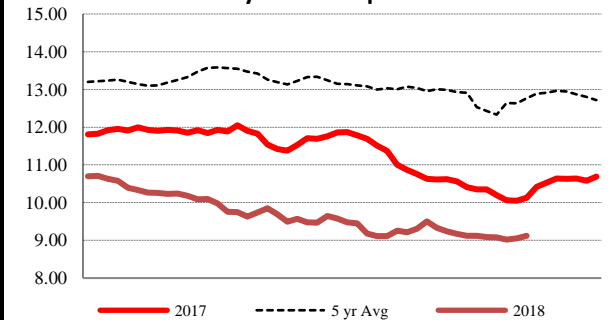
### 5 Area Weekly Wtd Avg Steer Price



### Weekly Beef Production



### Weekly Steer Drop Value



## USDA Livestock, Poultry & Grain Market News

Des Moines, Iowa

Phone: 515-284-4460

Email: [desm.lgmn@usda.gov](mailto:desm.lgmn@usda.gov)

[www.ams.usda.gov/LSMarketNews](http://www.ams.usda.gov/LSMarketNews)