

KANSAS WEEKLY SUMMARY

Recap For Week Ending: November 10, 2018

Receipts: This Week: 16,230 Week Ago: 16,746 Year Ago: 16,846

Compared to last week, Feeder steers uneven, steady to 3.00 lower, one sale 4.00 higher on 800-900 lbs. Heifers, bulk of the trade steady, instances to 6.00 higher and 6.00 lower. Steer and heifer calves not well tested, a lower undertone noted. Slaughter cows steady, instances slightly lower. Slaughter bulls steady. Direct Feeder steers had no test and heifers were not tested on a Current FOB Basis. For the week in Kansas, live purchases traded mostly 2.00 lower at 114.00 with a few up to 115.00. Snow in northern Kansas hampered transportation and limited receipts.

KANSAS WEEKLY FEEDER CATTLE AVERAGES

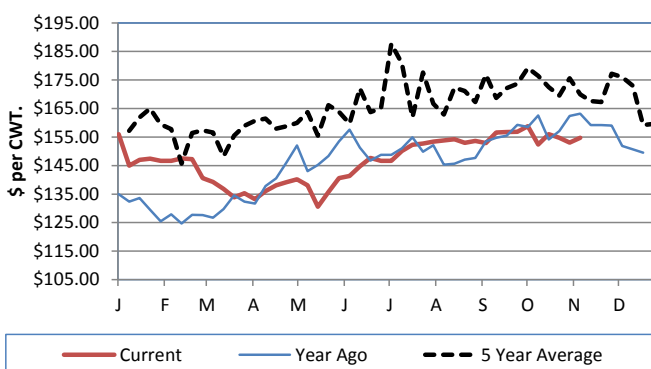
[Auction Summary](#)

Feeder Steers (M&L 1)

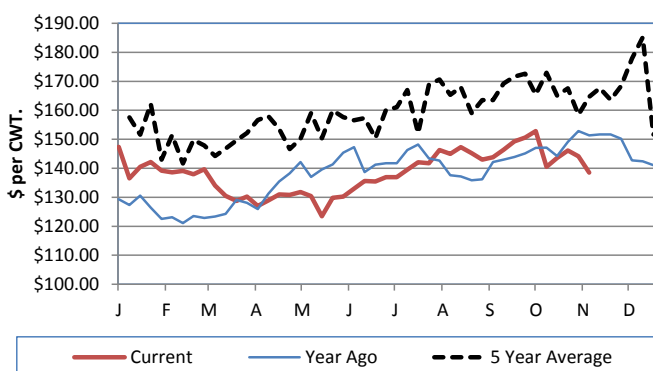
Feeder Heifers (M&L 1)

	<u>This Week</u>	<u>Last Week</u>	<u>Year Ago</u>		<u>This Week</u>	<u>Last Week</u>	<u>Year Ago</u>
400-500 lbs.	\$185.44	\$187.27	\$194.94	400-500 lbs.	\$162.47	\$157.99	
500-600 lbs.	\$164.10	\$166.89	\$178.27	500-600 lbs.	\$148.40	\$146.91	\$161.96
600-700 lbs.	\$153.42	\$156.72	\$166.33	600-700 lbs.	\$141.65	\$141.40	\$153.71
700-800 lbs.	\$154.33	\$153.33	\$162.00	700-800 lbs.	\$138.54	\$144.14	\$151.34
800-900 lbs.	\$154.97	\$152.61	\$163.93	800-900 lbs.	\$137.07	\$140.57	\$149.58
900-1000 lbs.	\$149.44	\$152.54	\$158.74	900-1000 lbs.	\$125.94	\$138.34	\$138.77

Weekly M&L 1 700-900 lb. Feeder Steer Price



Weekly M&L 1 700-800 lb. Feeder Heifer Price



KANSAS DIRECT FEEDER CATTLE

[DC LS165](#)

(Current FOB)

	<u>Steers</u>	<u>Heifers</u>
600-700 lbs.	NQ	NQ
700-800 lbs.	153.83	NQ
800-900 lbs.	NQ	NQ

KANSAS WEEKLY GRAIN BIDS

	<u>Central KS</u>	<u>Western KS</u>
US NO 1 HR Winter Wheat	4.375-4.86	4.28-4.68
US NO 2 Yellow Corn	3.2275-3.675	3.31-3.79
US NO 2 Sorghum	5.35-6.05	5.32-5.88
US NO 2 Soybeans	7.40-8.2175	7.30-7.50
Sunflower - Oilseeds (Goodland)	NC 16.65	
Cotton - West Texas	72.59	

WINTER LIVESTOCK AUCTION

[DC LS150](#)

Slaughter Cows

	<u>Average</u>	<u>High</u>	<u>Low</u>
Prem White	NQ	NQ	NQ
Breakers	58.00-60.50	NQ	NQ
Boners	48.50-56.00	56.00-57.00	46.00-48.00
Lean	39.00-44.00	45.50-46.00	34.50-39.00

KANSAS WEEKLY ETHANOL BIDS

[NW GR115](#)

DDG	143.00-180.00
Modified Wet	NQ
Wet	50.00-61.00

Slaughter Bulls

	<u>Average</u>	<u>High</u>	<u>Low</u>
YG 1-2	62.50-69.00	NQ	52.00-58.00

KANSAS WEEKLY HAY PRICES

[DC GR310](#)

	<u>Southwest KS</u>	<u>South Central KS</u>
Alfalfa (Dairy)		
Supreme	185.00-210.00	185.00-210.00
Premium	170.00-195.00	170.00-195.00
Ground & Delivered	195.00-205.00	175.00-185.00

KANSAS WEEKLY WTD AVG CATTLE REPORT

[LM CT157](#)

	<u>This Week</u>	<u>Last Week</u>	<u>Last Year</u>
Live Str	\$114.13	\$115.87	\$123.60
Live Hfr	\$113.91	\$115.94	\$123.67
Dressed Str	\$181.00	\$182.00	\$196.00
Dressed Hfr	\$180.00	\$181.31	\$192.00

USDA Livestock Poultry and Grain Market News

Dodge City, KS

Phone: (620) 227-8881

Email: dodgecity.lpgmn@ams.usda.gov

<http://www.ams.usda.gov/lpsmarketnewspage>