



National Monthly Grass Fed Beef Report

Agricultural Marketing Service
Livestock, Poultry & Grain Market News

For The Month of January
Fri. Jan. 29, 2021

Negotiated Grass Fed Beef - Wholesale

Item Description	(\$/lb)	Avg
Rib Primal		
Ribeye, Boneless, Whole	15.00 - 17.00	16.15
Ribeye Steak	10.39 - 13.00	11.73
Chuck Primal		
Chuck Roll	7.00 - 12.00	8.35
Round Primal		
Knuckle, Peeled, Whole		
Top Round, Inside		
Bottom Round, Gooseneck		
Eye of Round	6.00 - 10.25	8.75
Loin Primal		
Tenderloin, Whole	21.00 - 34.00	28.07
Tri Tip	7.95 - 9.98	8.60
Top Butt, Sirloin, Whole	9.00 - 12.12	11.09
New York Steak	24.00 - 30.00	26.60
Sirloin Steak	14.00 - 18.25	16.38
Flank, Brisket, and Plate Primal		
Brisket, Whole	8.00 - 9.95	8.59
Flank Steak	8.25 - 14.00	12.45
Skirt Steak	10.00 - 12.95	10.59
Hanger Steak	8.00 - 8.75	8.25
Short Ribs	8.00 - 9.95	9.18
Stew Meat	8.25 - 11.95	10.23
Ground or Trim Product		
90% Bulk	7.00 - 9.99	8.55
90% Patties	9.00 - 9.30	9.10
85% Bulk Trim		

Variety Meats

Beef Oxtail		
Beef Liver	3.00 - 6.50	4.39
Beef Tongue		
Beef Bones	2.75 - 7.00	4.13

Small and Very Small Producer Carcass Prices

Verified through the Grass Fed SVS Producer Program
Prices shown are in (\$/lb).

Grass Fed Beef Dressed Carcass Basis Range	3.00 - 4.80
Grass Fed Beef Dressed Carcass Basis Weighted Avg	3.85

Cost of Production

[NASS 17 State \\$/AUM Grazing Fees 2020 Survey](#) 19.90

Grazing Fee Estimates: Based on Grass Hay Prices

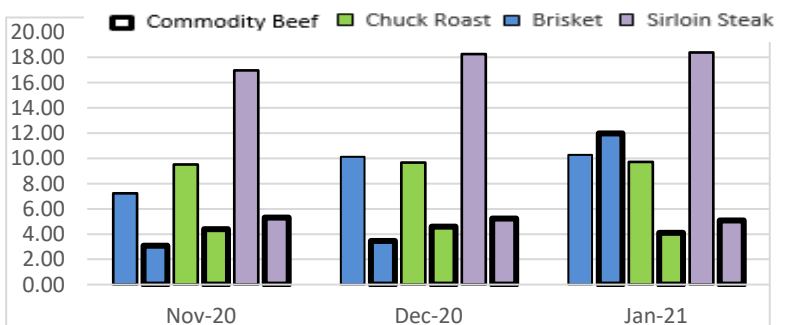
Good Tallgrass Pasture \$/AUM	26.80
Fair to Good Pasture \$/AUM	20.10

Grass Fed Beef - Direct to Consumer (Retail)

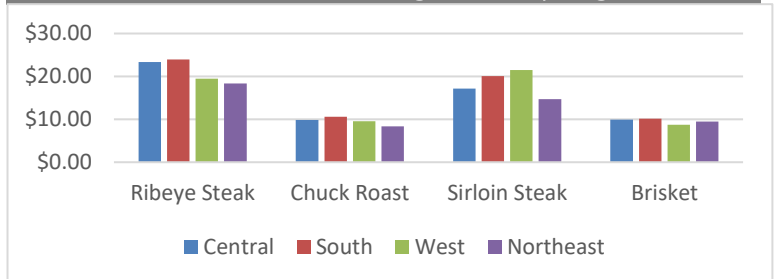
Carcass Purchase Size	(\$/lb)	Avg
Whole	5.25 - 9.00	7.32
Half	5.50 - 11.25	7.97
Quarter	5.75 - 11.75	8.53

Item Description	(\$/lb)	Avg	Commodity Beef*	Grassfed Premium**
Ribeye Steak	18.00 - 25.95	21.54	7.96	13.58
Ribeye Roast	14.00 - 26.50	20.50	7.37	13.13
Chuck Roast	8.00 - 12.00	9.73	4.10	5.63
Flat Iron Steak	13.49 - 25.00	18.28	8.31	9.97
Rump Roast	8.00 - 11.49	9.73	4.09	5.64
Bottom Round Roast			4.20	
Filet Mignon	19.00 - 39.99	28.98	13.97	15.01
Tenderloin	17.00 - 28.00	20.75	9.89	10.86
Tri Tip	9.00 - 15.25	11.66	6.29	5.37
Sirloin Steak	12.49 - 25.58	18.38	5.08	13.30
Sirloin Steak	8.85 - 17.22	11.34	4.05	12.31
Brisket	8.95 - 12.77	10.28	11.97	-1.69
Flank Steak	8.99 - 16.95	13.79	8.42	5.37
Skirt Steak	12.50 - 20.00	15.17	8.45	6.72
Short Ribs	6.00 - 10.99	8.53	5.85	2.68
Stew Meat	8.25 - 13.38	10.58	5.20	5.38

Direct Grass Fed Vs. Direct Commodity



Direct Grass Fed Average Price by Region



Region Breakout: Central: ND, SD, NE, KS, MO, IA, MN, WI, MI, OH, WV, IN, IL; Northeast: ME, MA, NH, VT, NY, PA, MD, DE, NJ, CT, RI; Southern: OK, KY, TN, VA, AR, TX, LA, MS, AL, GA, FL, NC, SC; Western: WA, OR, CA, NV, AZ, NM, CO, WY, MT, ID, UT, AK, HI

Source: USDA Livestock, Poultry and Grain Market News

Des Moines, Iowa | 515-284-4460 | desm.lpgmn@ams.usda.gov

www.ams.usda.gov/LPSMarketNewsPage

* Prices averaged from the National Retail Beef Activity Report

** The difference in commodity retail beef prices and grass fed retail beef prices.