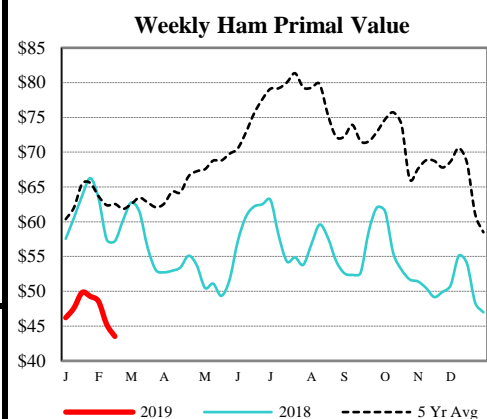
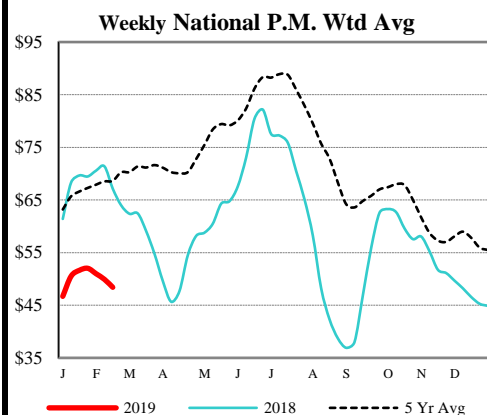


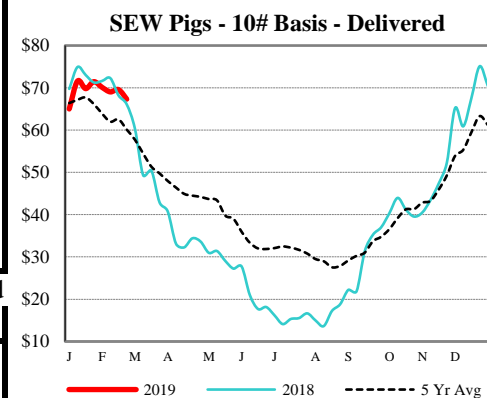
DAILY DIRECT HOGS PLANT DELIVERED as of 1:30 PM

Negotiated Barrow and Gilt:	Carcass Base Price	Live Price
<u>NATIONAL - LM_HG203:</u>		
Range:	\$43.50 - \$47.85	\$33.50 - \$41.00
Weighted Average:	\$46.76	\$37.93
Change from Prior Day:	0.42 higher	0.08 lower
Receipts:	9,206	1,598
<u>IOWA/MINNESOTA - LM_HG206:</u>		
Range:	\$44.00 - \$47.00	N/A - N/A
Weighted Average:	\$46.30	N/A
Change from Prior Day:	0.28 higher	N/A
Receipts:	4,166	519
<u>WESTERN CORNBELT - LM_HG212:</u>		
Range:	\$44.00 - \$47.00	\$33.50 - \$39.00
Weighted Average:	\$46.22	\$38.01
Change from Prior Day:	0.46 higher	0.44 lower
Receipts:	4,871	1,029
<u>EASTERN CORNBELT - LM_HG210:</u>		
Range:	N/A - N/A	\$35.00 - \$41.00
Weighted Average:	N/A	\$37.77
Change from Prior Day:	N/A	unchanged
Receipts:	4,015	569



NATIONAL DAILY PORK REPORT FOB PLANT- LM_PK602:

Carcass Cutout Values		Change:	
Primal Loin	59.01	(-2.22)	
Primal Butt	60.54	(-0.61)	
Primal Picnic	63.28	(-3.50)	
Primal Rib	31.76	(-0.81)	
Primal Ham	119.93	0.45	
Primal Belly	41.52	(-0.89)	
Total Loads	96.36	(-9.21)	
Pork Cuts	337.33		
Trim/Process Pork	282.33 Lds		
	55.00 Lds		



Weekly USDA By-Product Drop Value (Hog): 3.29 unchanged

DAILY EST. HOG SLAUGHTER UNDER FIS - SJ_LS710

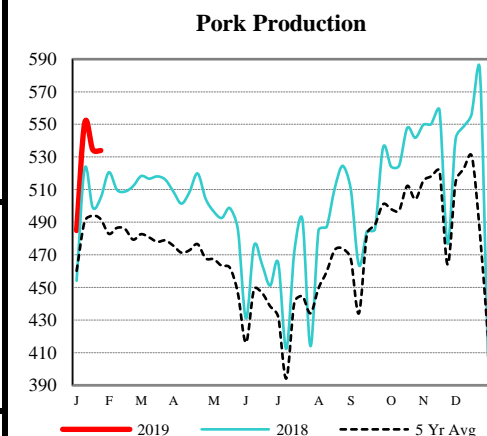
Today (est)	472,000	Saturday:	150,000
Week Ago (est)	465,000		218,000
Year Ago (act)	449,000		144,000
Week to Date (est)	2,362,000		2,512,000
Same Period Last Week (est)	2,296,000		2,514,000
Same Period Last Year (act)	2,248,000		2,392,000

CME Lean Hog Close	High	Low	Settle	Change
APR	56.60	55.23	55.45	(-0.50)
MAY	66.28	65.30	65.48	(-0.32)
JUN	76.53	75.30	75.90	0.22
JLY	79.03	77.78	78.50	0.20

CME Lean Hog Delayed Futures

US Direct Delivered Feeder Pig Summary for Weekending 22-Feb-19

Formula, Cash, & Composite Wtd Avg Prices		Formula	Cash	Composite
SEW	10-12 lb Basis	46.29	53.44	48.91
Feeder Pigs	40 lb Basis	-	67.32	67.32



USDA Livestock, Poultry & Grain Market News

Des Moines, Iowa

Phone: 515-284-4460

Email: Desm.LPGMN@ams.usda.gov

[USDA AMS Livestock, Poultry & Grain Market News Portal](#)