

**NATIONAL WEEKLY FEEDER & STOCKER CATTLE SUMMARY**

**USDA LIVESTOCK, POULTRY & GRAIN MARKET NEWS**

St. Joseph, Missouri

Monday, May 12, 2025

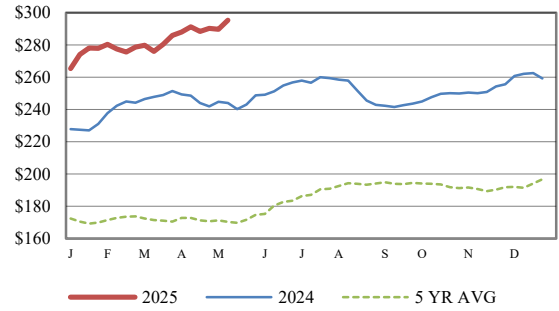
for w/e Saturday, 05/10/25. Email: [stjoe.lpgmn@usda.gov](mailto:stjoe.lpgmn@usda.gov)

<b>Receipts:</b>	This Week	Last Week	Year Ago
<a href="#">SJ_LS850</a>	215,500	238,500	202,300

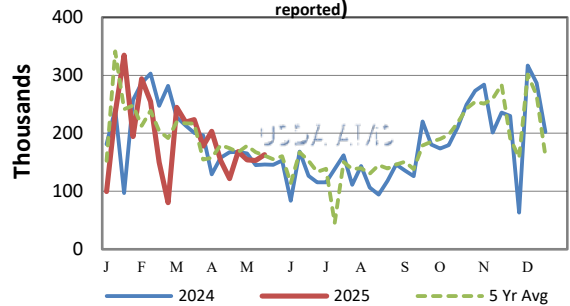
Compared to last week, steers and heifers sold 7.00 to 10.00 higher in the North Central region while the other areas sold 2.00 to 6.00 higher. Good to very good demand for all weights of steers and heifers as the cash fed cattle market continues to make new all-time, historical, high prices with each passing week and ranchers are primed to take advantage of the opportunity to market calves early at these handsome prices. The feeder supply was light to moderate as the calendar turned to May and some auctions started moving to summer schedules. In the Northern Plains due to dry grass conditions, some cattle sold this week that are usually held until the summer BBQ runs. The market was incredibly active, especially on those lighter steers and heifers as they are much harder to come by than the bigger cattle. Cattle feeders are very bullish currently as the cash fat cattle market has soared to levels that many thought was difficult. As futures contracts fail to keep up with the cash market, ranchers and cattle feeders hope the basis will stay positive all year long and feeder cattle that were bought at generous prices will be very profitable. CME positions continue to press higher as packers continue to fight over limited market ready cattle and feeder cattle futures reached all-time record highs again this week. Farmers have made good planting progress as corn has gone in the ground very quickly this year as conditions were dry as rain is needed in some areas now as temps are forecasted to be in the 90's mid-week in the Midwest. Negotiated sales of fed cattle in Kansas sold steady to 2.00 higher at 218.00 to 220.00, mostly 219.00. In TX/OK/NM, live sales sold 1.00 higher at 219.00. In Nebraska, live sales were 3.00 to 5.00 higher at 225.00 to 228.00, while dressed sales sold mostly 5.00 with some up to 10.00 higher at mostly 355.00, some up to 360.00. For the week, Choice Boxed beef closed on Friday at 345.97, 3.07 higher and Select closed at 331.17, 5.82 higher. Weekly Cattle Slaughter under federal inspection estimated at 559K, the same as last week and 57K less than a year ago. Year-to-Date Cattle Slaughter is over 700K less than a year ago. The last 3-week rolling average non-holiday period under 560K prior to this past week occurred in April of 2016. Auction volume this week included 50 percent weighing over 600 lbs and 41 percent heifers.

[More.....](#)

**CME FEEDER CATTLE INDEX (\$/CWT)**



**NATIONWIDE REPORTED WEEKLY FEEDER CATTLE AUCTION RECEIPTS**  
(Receipts vary depending on the number of auctions reported)

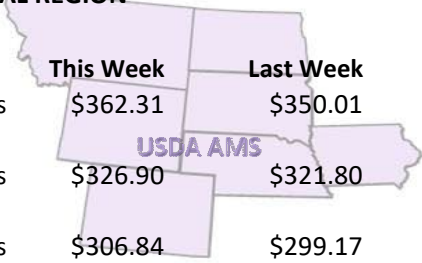


**REGIONAL WEIGHTED AVERAGE**

**FEEDER STEER PRICES**

**NORTH CENTRAL REGION**

Steers:	This Week	Last Week	Last Year
600-700 lbs	\$362.31	\$350.01	\$299.69
700-800 lbs	\$326.90	\$321.80	\$264.89
800-900 lbs	\$306.84	\$299.17	\$249.53



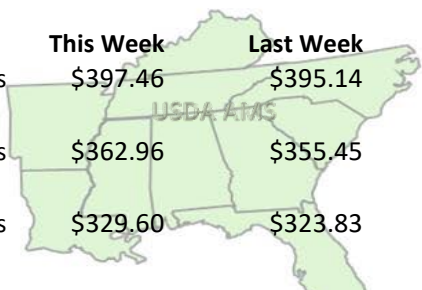
**SOUTH CENTRAL REGION**

Steers:	This Week	Last Week	Last Year
500-600 lbs	\$383.74	\$382.40	\$315.14
600-700 lbs	\$346.17	\$339.49	\$281.82
700-800 lbs	\$307.64	\$304.57	\$252.35

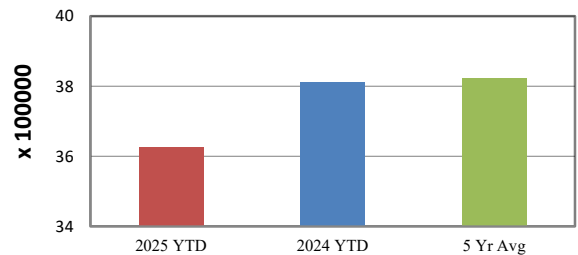


**SOUTHEAST REGION**

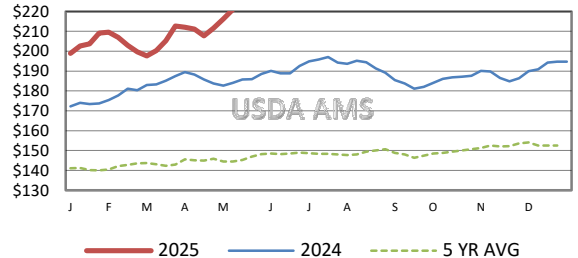
Steers:	This Week	Last Week	Last Year
400-500 lbs	\$397.46	\$395.14	\$316.89
500-600 lbs	\$362.96	\$355.45	\$293.36
600-700 lbs	\$329.60	\$323.83	\$271.99



**YEAR TO DATE AUCTION RECEIPTS**



**5 AREA WEEKLY WEIGHTED AVERAGE SLTR STEER PRICE (\$/CWT)**



**USDA Livestock, Poultry, & Grain Market News**

St. Joseph, Missouri

Phone: 816-676-7000



For detailed state-by-state feeder cattle quotes:

[National Feeder & Stocker Cattle Summary](#)

<http://www.ams.usda.gov/LSMarketNews>