



# USDA Weekly National Lamb Market Summary

Livestock, Meat, Wool, Pelt, & International Markets

Friday, March 05, 2021

**\*This report will be discontinued March 5<sup>th</sup> 2021\***

Volume 26, No. 09

Please use the links below to view access to the latest reports

<u>National Boxed Lamb Cuts</u>	<u>National Weekly Slaughter Sheep Review</u>
<a href="https://www.ams.usda.gov/mnreports/ams_2648.pdf">https://www.ams.usda.gov/mnreports/ams_2648.pdf</a>	<a href="https://www.ams.usda.gov/mnreports/lm_lm352.txt">https://www.ams.usda.gov/mnreports/lm_lm352.txt</a> New Slug ID Number in MARS - 2613
<u>USDA Estimated National Lamb Carcass Cutout</u>	<u>National Sheep Summary</u>
<a href="https://www.ams.usda.gov/mnreports/ams_2649.pdf">https://www.ams.usda.gov/mnreports/ams_2649.pdf</a>	<a href="https://www.ams.usda.gov/mnreports/sa_ls855.txt">https://www.ams.usda.gov/mnreports/sa_ls855.txt</a> New Slug ID in MARS - 3173
<u>National Weekly Lamb Cuts - Imported</u>	<u>National Wool Review</u>
<a href="https://www.ams.usda.gov/mnreports/ams_2650.pdf">https://www.ams.usda.gov/mnreports/ams_2650.pdf</a>	<a href="https://www.ams.usda.gov/mnreports/gl_ls850.txt">https://www.ams.usda.gov/mnreports/gl_ls850.txt</a> New Slug ID in MARS - 2911
<u>USDA Lamb Estimated Grading Percent</u>	<u>National Retail Summary</u>
<a href="#">Meat Grading Reports   Agricultural Marketing Service</a> Select Tonnage report for current month and go to page 3	<a href="https://www.ams.usda.gov/mnreports/lswlnvfeatures.pdf">https://www.ams.usda.gov/mnreports/lswlnvfeatures.pdf</a> New Slug ID Number in MARS - 3229
<u>Acutal Slaughter Under Federal Inspection</u>	<u>U.S. Federally Inspected Slaughter by Region</u>
<a href="https://www.ams.usda.gov/mnreports/sj_ls711.txt">https://www.ams.usda.gov/mnreports/sj_ls711.txt</a> New Slug ID Number in MARS - 3206	<a href="https://www.ams.usda.gov/mnreports/sj_ls713.txt">https://www.ams.usda.gov/mnreports/sj_ls713.txt</a> New Slug ID Number in MARS - 3205
<u>Estimated Meat Production</u>	<u>U.S. to Mexico Weekly Export Summary</u>
<a href="https://www.ams.usda.gov/mnreports/sj_ls712.txt">https://www.ams.usda.gov/mnreports/sj_ls712.txt</a> New Slug ID Number in MARS - 3209	<a href="https://www.ams.usda.gov/mnreports/al_ls635.txt">https://www.ams.usda.gov/mnreports/al_ls635.txt</a> New Slug ID Number in MARS - 2952
<u>Weekly Lamb Pelts Price Report</u>	<u>Feedlot Inventories</u>
<a href="https://www.ams.usda.gov/mnreports/nw_ls443.txt">https://www.ams.usda.gov/mnreports/nw_ls443.txt</a> New Slug ID in MARS - 3218	<a href="https://www.ams.usda.gov/mnreports/lsmcolambfi.pdf">https://www.ams.usda.gov/mnreports/lsmcolambfi.pdf</a> New Slug ID in MARS - 2909
<u>Weekly Auctions</u>	

### SLAUGHTER LAMBS

- [San Angelo, TX](#)
- [Worthing, SD](#)
- [Ft Collins, CO](#)

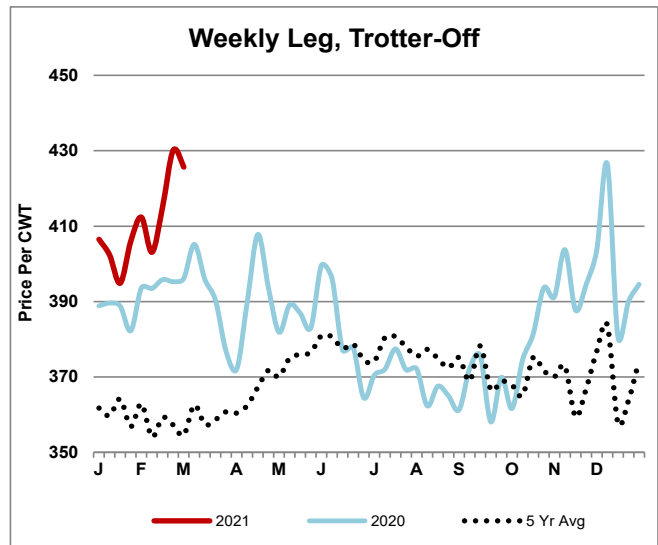
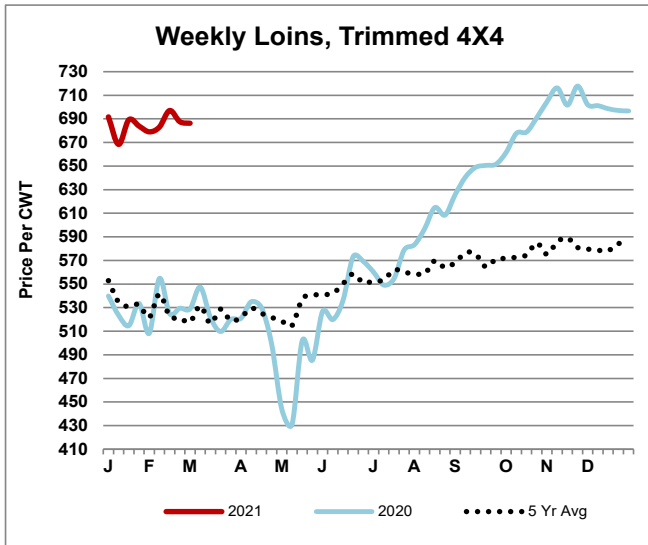
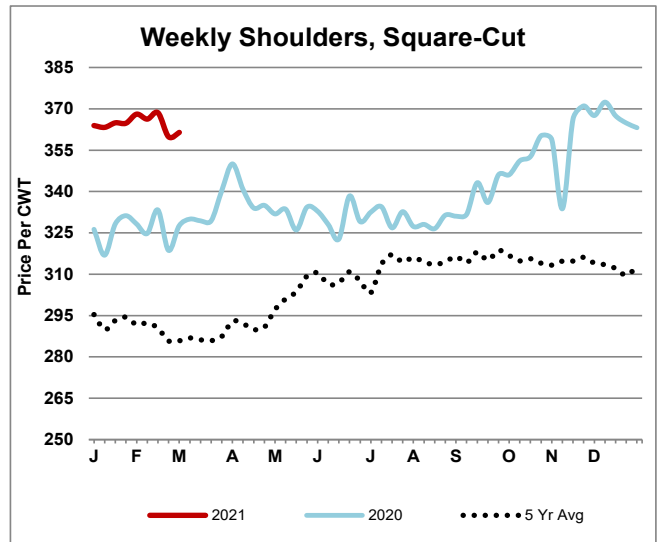
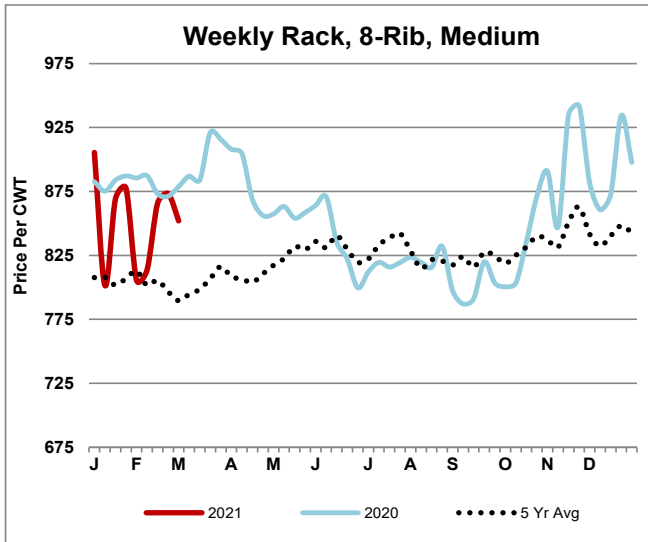
### SLAUGHTER EWES

- [San Angelo, TX](#)
- [St. Onge-Newell, SD](#)
- [Ft. Collins, CO](#)
- [Billings, MT](#)

### FEEDER LAMBS

- [San Angelo, TX](#)
- [St. Onge-Newell, SD](#)
- [Ft. Collins, CO](#)

## Weekly Lamb Graphs



For additional information, contact these Livestock, Poultry and Grain Market News locations

Des Moines, IA  
William Worlie

St. Joseph, MO  
Jodie Pitcock

Greeley, CO  
970-353-9750

New Holland, PA  
Levi Geyer

San Angelo, TX  
Rebecca Sauder

Sioux Falls, SD  
Justin Lumpkin