



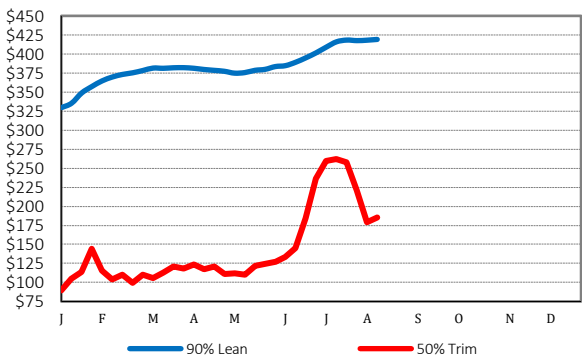
National Weekly Cow and Boneless Beef Summary

Agricultural Marketing Service  
Livestock, Poultry, and Grain Market News

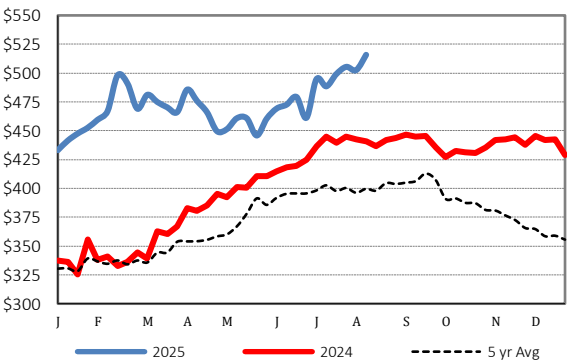
August 22, 2025

Boneless Processing Beef and Beef Trimmings					100% Lean Items				
National			Central		<a href="#">LM XB 461</a>	Loads	Wtd Avg	Change	
<a href="#">LM XB 460</a>	Loads	Wtd Avg	Loads	Wtd Avg	Cutter Cow Carcass Cutout		332.98	5.77	
Fresh 92-94%	10.3	440.71	8.8	441.17	Inside Rounds - Boxed	8.6	522.03	11.34	
Fresh 90%	27.4	427.91	20.1	430.78	Outside Rounds	0.0	0.00	0.00	
Fresh 85%	15.7	393.50	10.7	394.77	Eye of Rounds	1.6	513.60	38.15	
Fresh 81%	3.5	320.88	3.5	320.88	Flats and Eyes - Combos	2.5	503.22	1.08	
Fresh 65%	12.5	225.32	8.5	224.84	Striploins	4.4	561.28	6.61	
Fresh 50%	37.1	183.32			S.P.B. - Combo	2.9	501.86	1.22	
Ground Beef					Cow By-Product Drop Estimate				
<a href="#">LM XB 459</a>			Loads	Wtd Avg	<a href="#">NW LS 444</a>				
Fresh 73%			5.6	375.56	CWT Live	13.73			
Fresh 81%			13.1	404.45	CWT Dressed	29.21			
Fresh 93%			3.6	518.64	Canadian Live Cow Prices				
Ground Chuck			3.6	400.81	<a href="#">WA LS 718</a>	Prices in US Dollars			
Ground Round			0.2	449.24	Ontario	157.07			
Ground Sirloin			0.4	529.83	Alberta	156.46			
Steer/Heifer/Cow Ground Beef					Weekly Canadian Imports				
Fresh 81%			3.6	389.87	<a href="#">WA LS 637</a>	Week ending:	8/9/25		
Fresh 93%			3.4	487.56	Slaughter St/Hf/Cow	7,723			
Ground Chuck			1.6	385.90	Slaughter Bulls	593			
					YTD St/Hf/Cow	325,404			
					YTD Bulls	14,482			
Estimated Cattle Slaughter					Weekly Cow Prices - Dressed Basis				
<a href="#">SJ LS 710</a>					<a href="#">LM CT168</a>	Breaker	Boning	Lean	Bull
Week to Date (est)				547,000	National	294.75	309.31	310.85	340.45
Same Period Last Week (est)				530,000					
Same Period Last Year (act)				608,984	Northwest	283.70	297.40	305.92	335.19
Cow and Bull Total Through Thursday				76,000	Southwest	297.12	320.36	327.83	343.30
Previous Week Total Cow & Bull Est				98,000					
Beef Production									
<a href="#">SJ LS 711</a>		8/9/2025	8/2/2025	8/10/2024					
Cow and Bull Slaughter		98,874	99,828	107,194	Eastern	301.87	303.84	297.91	335.11
Year to Date Totals		3,310,185	3,211,311	3,747,234					

2025 90% Lean vs 50% Lean



100% Lean Inside Rounds

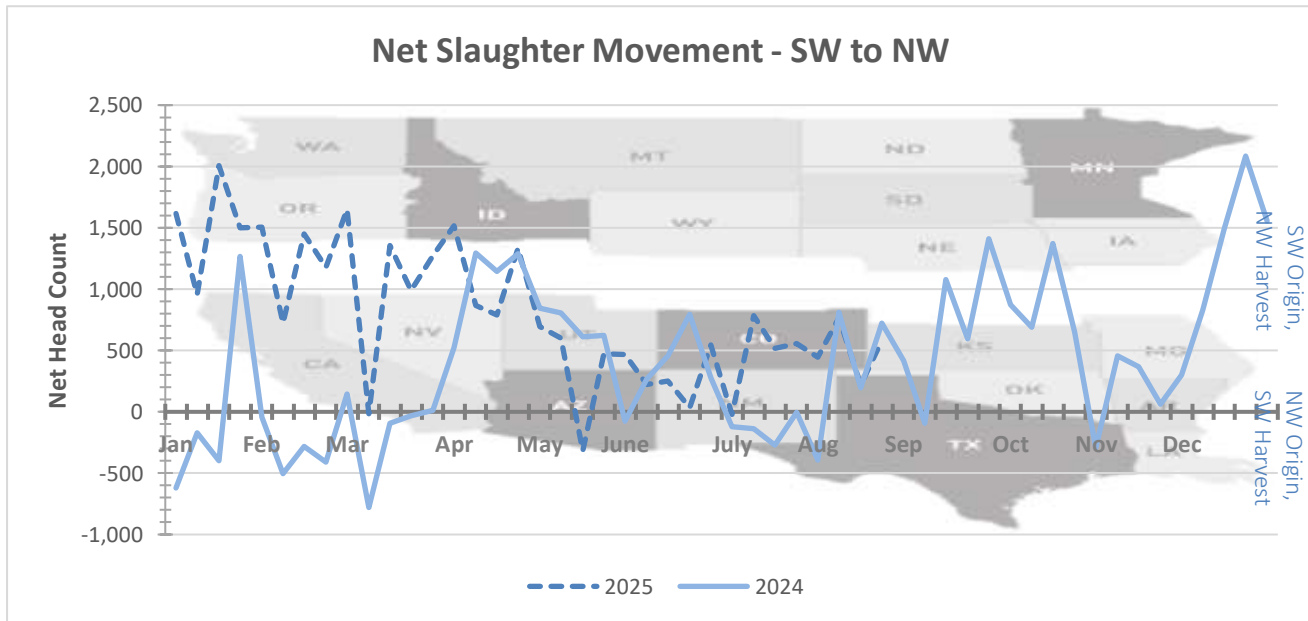


## Net Slaughter Movement of Cows and Bulls

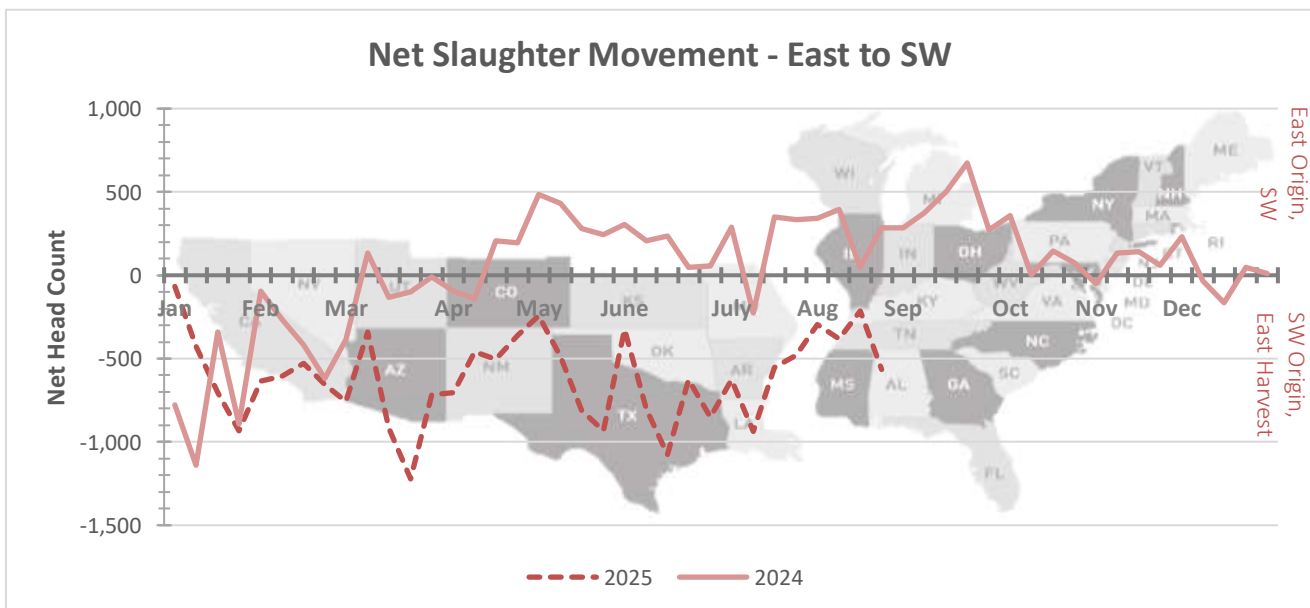
Data shown in the graphs below is derived from Livestock Mandatory Price Reporting -

[LM CT168](#) National Weekly Direct Cow and Bull Report

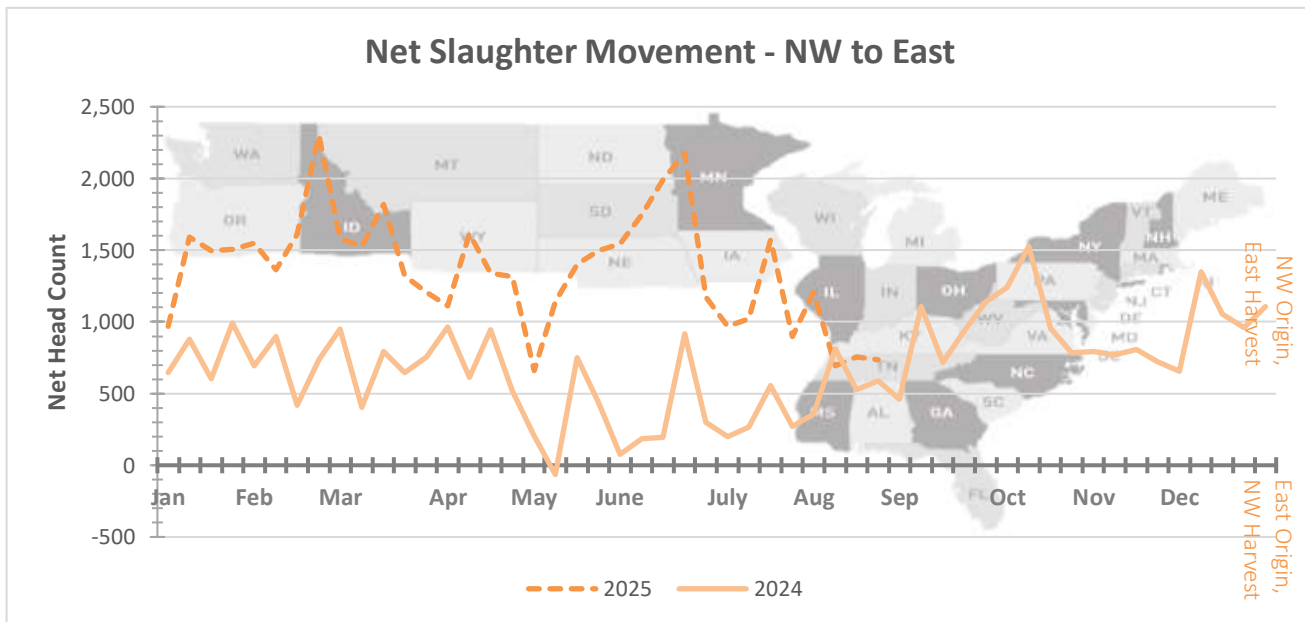
Graph Overview: <https://www.ams.usda.gov/sites/default/files/media/CowandBullMovementGraphOverview.pdf>



This graph illustrates the net slaughter movement from area to area. For example, when the line is in positive territory, there are more cows and bulls originating in the SW area and being transferred to the NW area for harvest. When the line is in negative territory, there are more cows and bulls originating in the NW area and being transferred to the SW area for harvest.



This graph illustrates the net slaughter movement from area to area. For example, when the line is in positive territory, there are more cows and bulls originating in the East area and being transferred to the SW area for harvest. When the line is in negative territory, there are more cows and bulls originating in the SW area and being transferred to the East area for harvest.



This graph illustrates the net slaughter movement from area to area. For example, when the line is in positive territory, there are more cows and bulls originating in the NW area and being transferred to the East area for harvest. When the line is in negative territory, there are more cows and bulls originating in the East area and being transferred to the NW area for harvest.