

DAILY DIRECT HOGS PLANT DELIVERED as of 1:30 PM

Negotiated Barrow and Gilt:	Carcass Base Price		Live Price	
<u>NATIONAL - AMS 2675/LM HG203:</u>				
Range:	\$86.00	\$95.00	\$60.25	\$75.50
Weighted Average:	\$88.10		\$68.10	
Change from Prior Day:	(-\$6.69)		(-\$1.33)	
Head Count:	3,247		1,057	

IOWA/MINNESOTA - AMS 2675/LM HG206:

Weighted Average:	*	*
Change from Prior Day:	*	*

WESTERN CORNBELT - AMS 2675/LM HG212:

Weighted Average:	*	*
Change from Prior Day:	*	*

EASTERN CORNBELT - AMS 2675/LM HG210:

Weighted Average:	*	\$69.93
Change from Prior Day:	*	*

*Price not reported due to confidentiality

NATIONAL DAILY PORK REPORT FOB PLANT- AMS 2498/LM PK602:

Carcass Cutout Values		Change:	
Primal Loin	100.12		0.40
Primal Butt	88.86		(-0.92)
Primal Picnic	125.98		0.63
Primal Rib	73.20		1.84
Primal Ham	155.52		0.63
Primal Belly	92.05		2.96
Total Loads	147.77		(-2.07)
Pork Cuts	274.73	lds.	
Trim/Process Pork	244.78	lds.	
	29.95		

Weekly USDA By-Product Drop Value (Hog): 4.31 0.19

DAILY HOG SLAUGHTER UNDER FIS - AMS 3208/SJ LS710

Today (est)	475,000	Saturday:	20,000
Week Ago (est)	477,000		38,000
Year Ago (act)	465,953		37,686
Week to Date (est)	2,389,000		2,409,000
Same Period Last Week (est)	2,399,000		2,437,000
Same Period Last Year (act)	2,374,671		2,412,357

National Daily Direct Hog Prior Day Report - Slaughtered Swine/LM HG201

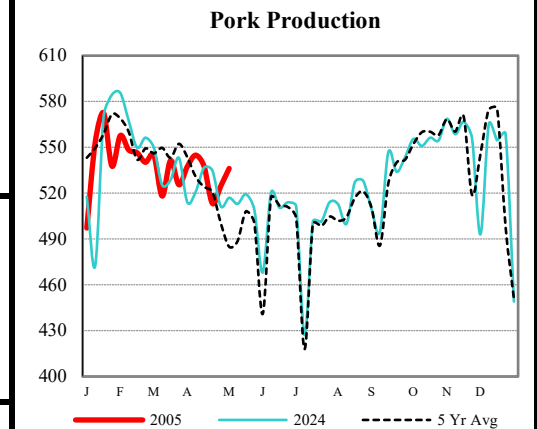
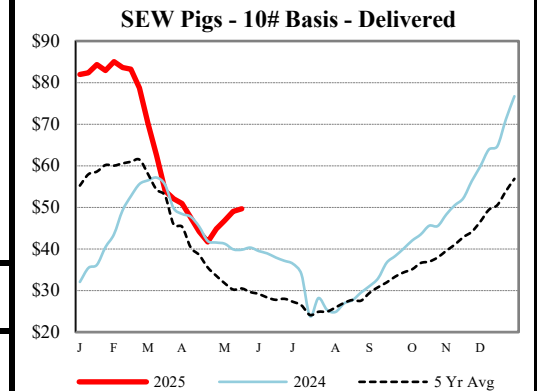
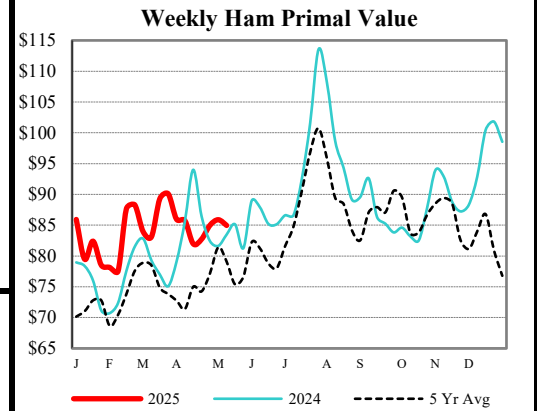
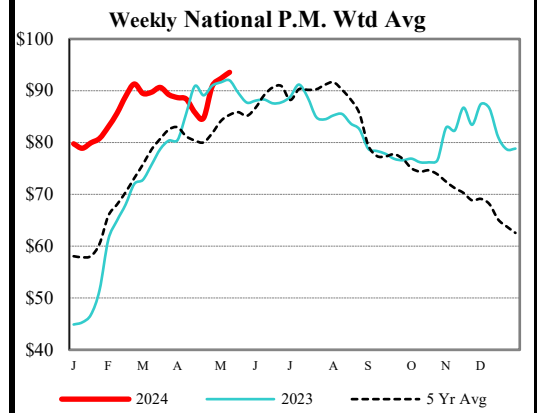
Producer Sold:	NEG	OMF	SPMF	OPA	Total
Head Count	6,931	28,988	123,830	70,372	230,310
Carcass Base Price	94.38	89.8	89.34	88.14	89.14
Average Net Price	95.61	92.73	91.04	89.61	90.91

Negotiated Formula included in total *Price not reported due to confidentiality.

US Direct Delivered Feeder Pig Summary for Weekending - AMS 2810

Formula, Cash, & Composite Wtd Avg Prices

		<u>Formula</u>	<u>Cash</u>	<u>Composite</u>
SEW	10-12 lb Basis	46.71	49.66	48.76
Feeder Pigs	40 lb Basis		80.05	80.05



USDA Livestock, Poultry & Grain Market News

Des Moines, Iowa | PH 515-284-4460

Email: Desm.LPGMN@usda.gov

<https://mymarketnews.ams.usda.gov/viewReport/2872>