

NATIONAL WEEKLY FEEDER & STOCKER CATTLE SUMMARY

St. Joseph, Missouri

Friday, February 03, 2012

USDA LIVESTOCK & GRAIN MARKET NEWS

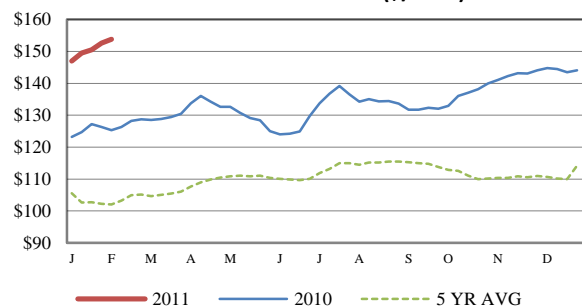
Email: stjoe.lgmn@usda.gov

Receipts:	This Week	Last Week	Year Ago
SJ_LS850	348,300	455,800	383,500

Compared to last week, feeder cattle prices were firm to 5.00 higher (mostly 2.00-5.00 higher) with the full advance on the 650-850 lb short-yearling types. Much of this week's offering will soon be celebrating their first birthday and possess a long-weaned condition that will be compared to last week, feeder cattle over 750 lbs opened the week slightly lower but closed steady to 2.00 higher following a midweek rally in the CME cattle futures. Calves and short-yearling stockers sold 3.00-8.00 higher on their continued path to the moon as grass interests aggressively bid on cattle as if it were mid-March. Buyers placed premiums on the thin-fleshed calves even though the groundhog promised another six weeks of winter. So far, the winter of 2011-2012 has been the mildest on record for many major cattle production areas – causing backgrounders to forget how miserable a snowstorm or blizzard can be on new purchases (especially those without much flesh cover). A heavy moisture front moved over the Rockies and onto the Plains late in the week, bringing with it heavy snows to the north and beneficial rain to the south. The full advance of the feeder market was noted on the females as the steer/heifer discount has narrowed to its tightest point in recent memory, the result of steer buyers searching for ways to cheapen-up on the average to lower quality kinds and additional competition from replacement buyers on the highest quality offerings. This week's heifer price levels would have sounded high for steers just a few weeks ago. A fancy load of 575 lb girls in Valentine, NE brought 189.00 on Thursday and 5 weight heifers sold as high as 175.00 as far south as San Angelo, TX.

[More.....](#)

CME FEEDER CATTLE INDEX (\$/CWT)



REGIONAL WEIGHTED AVERAGE FEEDER STEER PRICES

NORTH CENTRAL REGION

Steers:	This Week	Last Week	Last Year
600-700 lbs	\$168.42	\$167.01	\$134.50
700-800 lbs	\$156.04	\$156.16	\$126.64
800-900 lbs	\$148.66	\$148.47	\$121.79

SOUTH CENTRAL REGION

Steers:	This Week	Last Week	Last Year
500-600 lbs	\$175.97	\$172.34	\$137.09
600-700 lbs	\$161.36	\$159.42	\$128.89
700-800 lbs	\$151.93	\$151.56	\$123.60

SOUTHEAST REGION

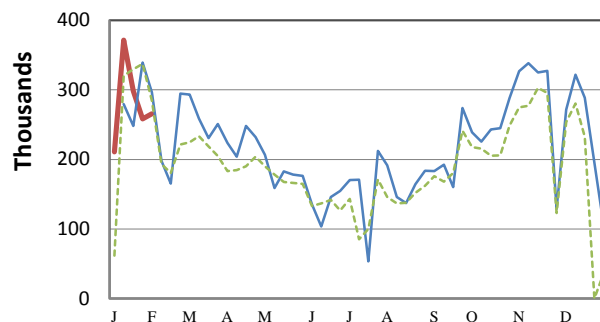
Steers:	This Week	Last Week	Last Year
400-500 lbs	\$178.41	\$172.86	\$134.72
500-600 lbs	\$163.32	\$162.25	\$125.24
600-700 lbs	\$152.22	\$149.35	\$117.12

For detailed state-by-state feeder cattle quotes:

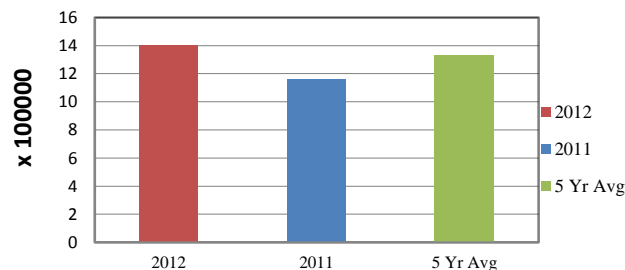
[National Feeder & Stocker Cattle Summary](#)

NATIONWIDE REPORTED WEEKLY FEEDER CATTLE AUCTION RECEIPTS

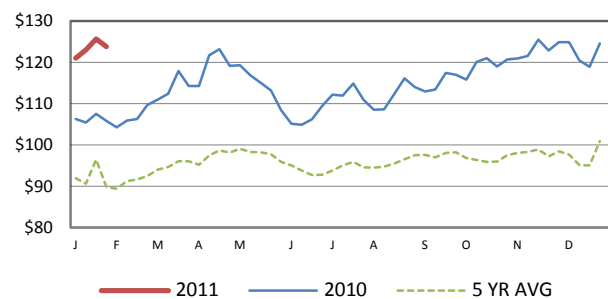
(Receipts vary depending on the number of auctions reported)



YEAR TO DATE



5 AREA WEEKLY WEIGHTED AVERAGE SLTR STEER PRICE (\$/CWT)



USDA Livestock & Grain Market News

St. Joseph, Missouri

Phone: 816-676-7000



<http://www.ams.usda.gov/LSMarketNews>