

**NEBRASKA WEEKLY SUMMARY**

**Recap For Week Ending**

**May 19, 2012**

**Receipts:** This Week: 2,977 Week Ago: 6,050 Year Ago: 5,185

Compared to last week, calves and feeders sold unevenly steady to 5.00 higher on a thin comparison. Quite a lot of variance on this week's short supply. However, it didn't deter the buyers, they were there for one reason, buy and buy as many on they could. Demand was good from start to finish at both sales this week with large crowd of buyers on the seats. Cattle on Feed: May 1st totals were 99.4 percent of 2011; Placements at 14.8 percent fewer cattle on feed during April and 100.4 percent marketed through the month. With the bullish Cattle on Feed news, Nebraska slaughter cattle sold sharply higher on the week, live sales are 3.00 to 3.50 higher at 123.50-125.00, with dressed sales 3.00 higher at 195.00. This week's offering included 55 percent steers with 60 percent weighing over 600 lbs.

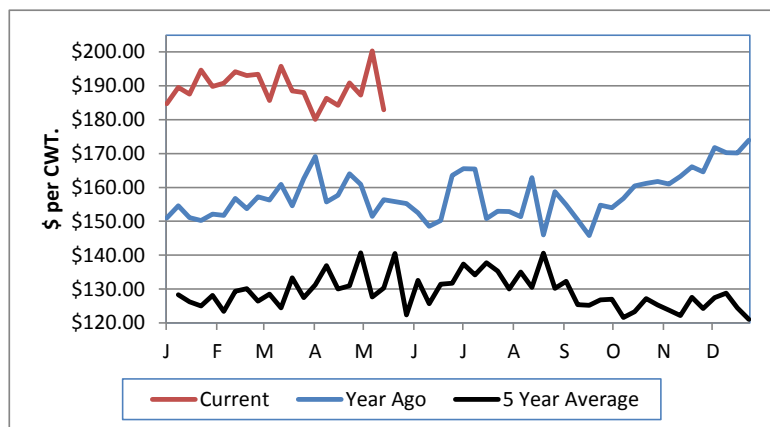
**NEBRASKA WEEKLY FEEDER CATTLE AVERAGES**

[Auction Summary](#)

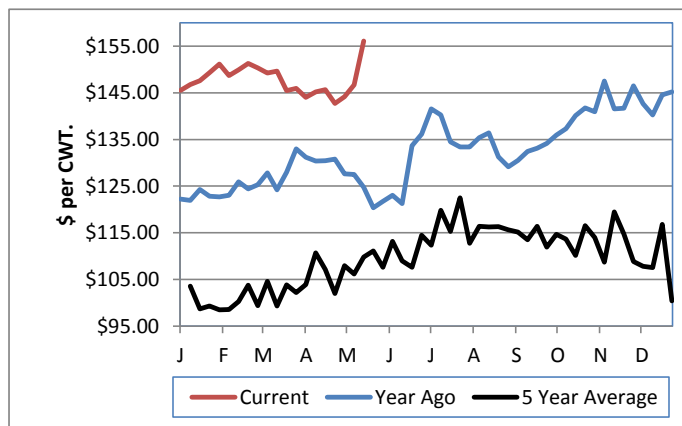
Feeder Steers:	This Week	Year Ago
<b>M&amp;L 1</b>		
400-500 lbs.	\$199.87	\$165.16
500-600 lbs.	\$183.09	\$152.86
600-700 lbs.	\$172.71	\$139.16
700-800 lbs.	\$169.37	\$131.58
800-900 lbs.	\$157.30	\$124.66
900-1000 lbs.	\$0.00	\$120.88

Feeder Heifers	This Week	Year Ago
<b>M&amp;L 1</b>		
400-500 lbs.	\$185.19	\$146.11
500-600 lbs.	\$174.93	\$140.35
600-700 lbs.	\$161.47	\$131.10
700-800 lbs.	\$144.41	\$123.38
800-900 lbs.	\$135.84	\$118.43
900-1000 lbs.	\$0.00	\$115.35

**Weekly M&L 1 500-600 lb. Feeder Steer Price**



**Weekly M&L 1 800-900 lb. Feeder Steer Price**



**Nebraska Weekly Hay Prices**

[Weekly Hay Report](#)

	Squares	Rounds
<b>Alfalfa</b>		
Supreme		
Premium	LG 200.00	
Good		135.00-150.00
Fair		115.00-130.00
<b>Grass</b>		
Good	SM 145.00-160.00	90.00-100.00
Fair		70.00-80.00
<b>Ground &amp; Delivered Alfalfa</b>		180.00-185.00

**Nebraska Weekly Grain Prices**

**Omaha-Council Bluffs Grain Bids Bid**

US NO 2 YELLOW CORN	6.11-6.71
US NO 1 SOYBEANS	13.66-14.36

**Nebraska Ethanol Co-Products Weekly Prices**

[DGS Report](#)

Weekly

DDG	210.00-238.00
Modified Wet	98.00-123.00
Wet	73.00-80.00

**Nebraska Weekly Weighted Average Cattle Report**

[lm\\_ct165.txt](#)

	This Week	Last Week	Last Year
Live Str	123.82	121.02	108.60
Live Hfr	123.90	121.40	109.01
Dressed Str	195.00	192.35	176.40
Dressed Hfr	194.73	192.28	175.46

**USDA Livestock and Grain Market News**  
Nebraska

Phone: (308) 390-5399  
Email: [KearneyNELSMN@ams.usda.gov](mailto:KearneyNELSMN@ams.usda.gov)

[www.ams.usda.gov/lsmarketnews](http://www.ams.usda.gov/lsmarketnews)