

MONTANA WEEKLY SUMMARY

Recap For Week Ending

May 19, 2012

Receipts: This Week: 4,993 Week Ago: 3,510 Year Ago: 3,739

Compared to last week: Feeder and stocker steers lightly tested last week so trend not established however a lower undertone was noted. Feeder and stocker heifers sold mostly 2.00 to 6.00 higher. Slaughter cows sold steady to 2.00 higher with full advance on Boner and Lean cows. Slaughter bulls sold steady to 3.00 higher. Demand moderate to good. Hay prices not well tested due to no current sales reported. Prices below reflect previously reported sales. Trade activity light to inactive. Demand light to moderate. Winter Wheat closed .79 cents to 1.00 per bushel higher; Spring Wheat closed .36 to .66 cents per bushel higher; Feed Barley closed steady to .10 per CWT lower. Compared to last sale on Apr 16: Feeder lambs lightly tested last sale so trend not established. Slaughter ewes sold 10.00 to 20.00 lower, mostly 12.00 to 18.00 lower. Demand moderate to good.

MONTANA WEEKLY FEEDER CATTLE WEIGHTED AVERAGES

[Weekly Auction Summary](#)

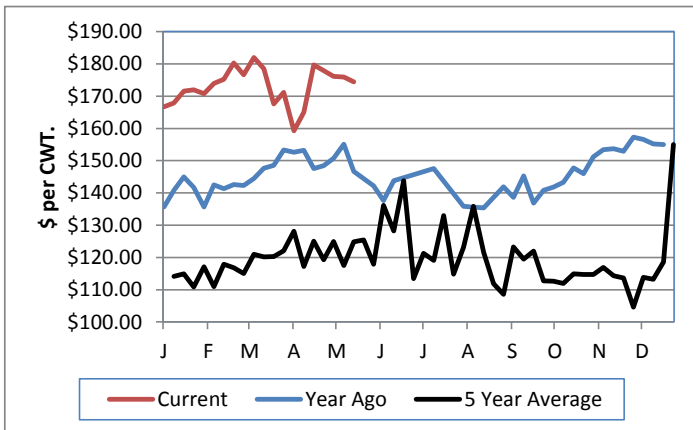
Feeder Steers M&L 1

	This Week	Year Ago
300-400 lbs.	N/A	N/A
400-500 lbs.	165.00-183.00	147.00
500-600 lbs.	169.25-179.50	145.00-155.00
600-700 lbs.	157.50-184.25	145.00
700-800 lbs.	152.50-167.60	120.50-132.25
800-900 lbs.	137.00-141.00	115.00
900-1000 lbs.	N/A	N/A

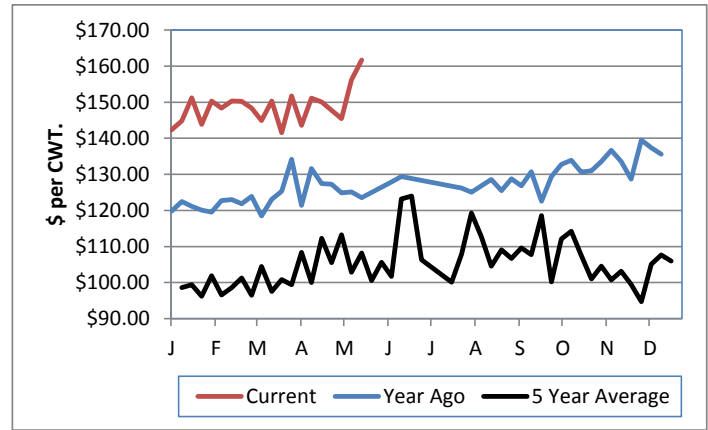
Feeder Heifers M&L 1

	This Week	Year Ago
300-400 lbs.	N/A	138.00
400-500 lbs.	165.00-173.00	136.00-154.00
500-600 lbs.	151.50-163.50	134.00-143.50
600-700 lbs.	140.00-162.00	130.75-138.00
700-800 lbs.	139.00	122.00-127.00
800-900 lbs.	130.00	111.50-115.00
900-1000 lbs.	N/A	N/A

Weekly M&L 1 500-700 lb. Feeder Steer Price



Weekly M&L 1 700-900 lb. Feeder Steer Price



Montana Weekly Hay Prices

[Weekly Hay Report](#)

	Good/Premium	Fair/Good
Alfalfa		
SM bales	125.00-175.00	N/A
LG bales	95.00-160.00	75.00-95.00
Grass		
SM bales	125.00-155.00	N/A
LG bales	85.00-145.00	75.00-85.00

Montana Sheep Prices

[Weekly Sheep Report](#)

Feeder lambs	under 90lbs	over 90 lbs
	173.00-179.00	160.00-160.50
Slaughter Ewes	Good(Fleshy)	Utility(Medium)
	45.00-58.00	45.00-59.00
	Cull(Thin)	
	32.00-47.00	

Montana Weekly Grain Prices

[Weekly Grain Report](#)

	12pct Winter Wheat	14pct Spring Wheat	Feed Barley/CWT
Billings area	7.09-7.24	8.11-8.26	NB
Great Falls	7.05-7.19	8.09-8.26	8.00-10.20
Northeast MT	6.48-6.68	7.57-7.85	8.75

Weekly Montana Slaughter Cow and Bull Prices

	% Lean	This Week	Last Year
Breakers	75-80	81.00-89.25	72.50-82.50
Boners	80-85	84.00-89.75	72.25-78.50
Lean	85-90	79.00-85.00	66.00-74.50
Bulls	YG 1-2	106.00-114.00	85.00-95.00

USDA Livestock and Grain Market News

Billings, Montana

Phone: (406) 370-6367

Email: BillingsMTLSMN@ams.usda.gov

www.ams.usda.gov/ismarketnews