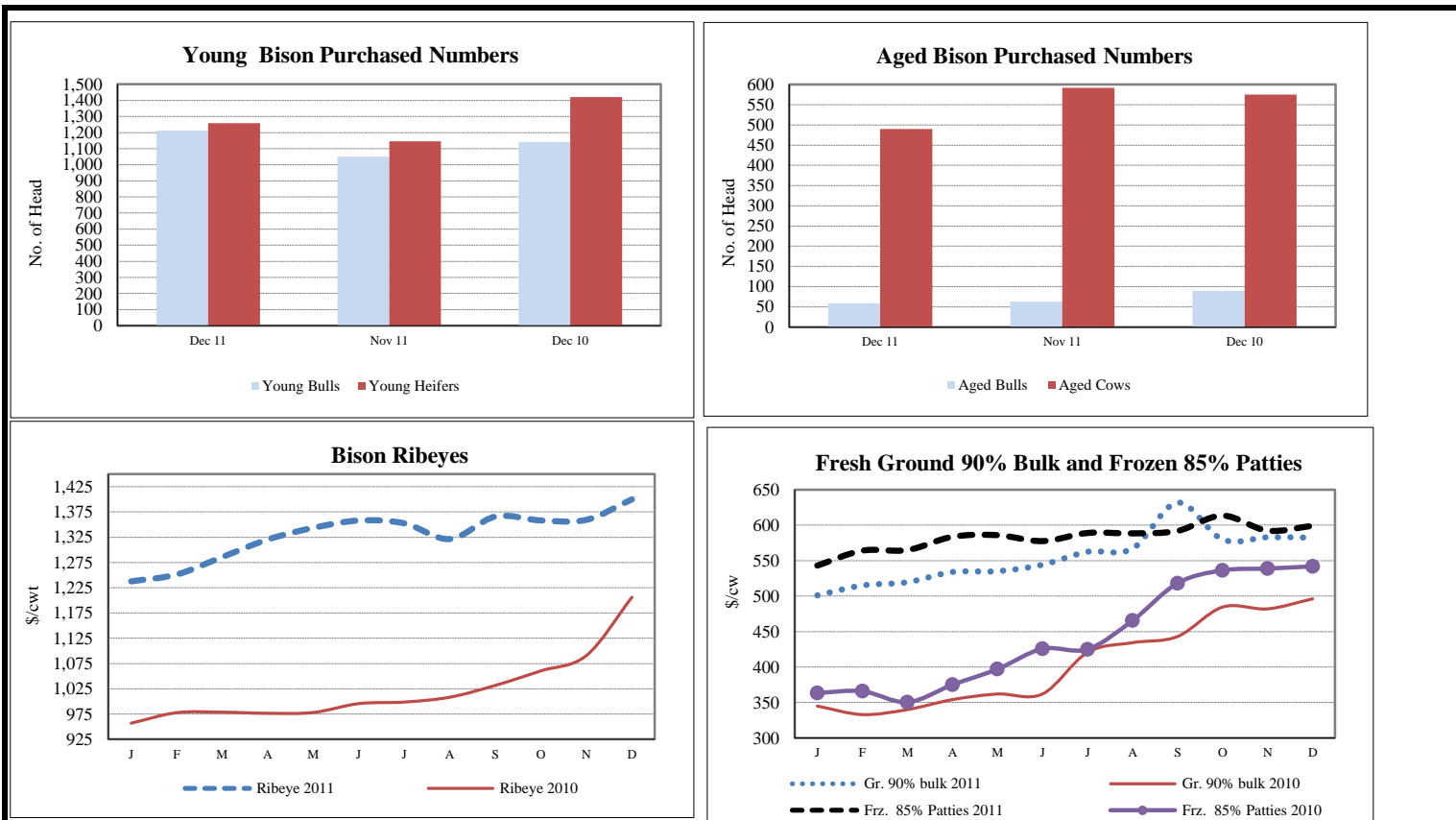


For the Month of December



	<u>This Month</u>	<u>Last Month</u>	<u>Year Ago</u>	
Actual Slaughter in Federally Inspected Plants				
Total	3,594	3,453	4,021	
Bison Carcasses-GRAIN FED-(Hot Carcass Wt \$/Cwt)FOB Plant Basis				
Young Bulls **	398.44	397.68	332.43	**Animals under the age of 30 months are classified young, while animals older than 30 months are considered part of the aged classification.
Young Heifers **	383.57	385.21	324.30	
Aged Bulls **	298.64	305.75	242.19	
Aged Cows **	290.86	285.11	238.03	
BISON MEAT - GRAIN FED - Wholesale - (\$/Cwt)				
Ribeye, Lip-On Fresh	1400.07	1359.52	1206.26	
Chuckroll/Clod Fresh	570.77	554.20	479.68	
Strip Loin Fresh	1339.69	1332.19	1149.59	
BISON TRIMMINGS - GRAIN FED - Wholesale - (\$/CWT)				
Bison Trimmings 90% Fresh	518.36	537.58	487.76	
GROUND BISON - GRAIN FED - Wholesale - (\$/CWT)				
Grnd 90% Bulk, Fresh	582.33	582.83	496.06	
Grnd 85% Patties, Frozen	599.07	592.25	541.86	
GROUND BISON - GRAIN FED - Case Ready (\$/Cwt)				
Grnd 90% Bulk, Fresh	598.00	583.00	501.00	
Canadian Live Bison Imports into U.S. - Source: USDA, APHIS				
Slaughter Male	569	335	530	
Slaughter Female	316	223	352	
Feeder Male	250	426	702	
Feeder Female	109	74	632	
Total	1,244	1,058	2,216	
Canadian Fresh Chilled Bison Meat Imports into U.S. - Source: Department of Commerce, U.S. Census Bureau				
	Oct 2011	Oct 2010	2011 YTD	2010 YTD
Boneless Fresh Chilled (lbs)	47,840	26,721	592,823	990,537
Bone-in Fresh Chilled (lbs)	661	0	882	2,425