

**AUCTION SUMMARY**

<a href="#">KO LS750</a>			7,800 hd	Monday
<b>OKLAHOMA NATIONAL STOCKYARDS</b> Oklahoma City, OK				
Feeder Steers	300-400 lbs	124.00-130.00	Feeder Heifers	300-400 lbs 99.00-109.00
Medium &	400-500 lbs	111.00-124.75	Medium &	400-500 lbs 94.00-105.75
Large #1	500-600 lbs	102.00-116.00	Large #1	500-600 lbs 87.00-99.00
	600-700 lbs	88.00-98.00		600-700 lbs 80.00-90.00
	700-800 lbs	85.00-95.00		700-800 lbs 84.00-89.50

<a href="#">JC LS758</a>			3,436 hd	Monday
<b>JOPLIN REGIONAL STOCKYARDS</b> Knoxville, IA				
Feeder Steers	400-500 lbs	104.50-113.50	Feeder Heifers	400-500 lbs 86.00-102.50
Medium &	500-600 lbs	91.50-113.50	Medium &	500-600 lbs 83.00-93.25
Large #1	600-700 lbs	86.00-98.50	Large #1	600-700 lbs 80.00-88.75
	700-800 lbs	88.00-97.50		700-800 lbs 79.50-86.50
	800-900 lbs	90.00-94.25		800-900 lbs

<a href="#">CV LS156</a>			2,800 hd	Monday
<b>CATTLEMAN'S LIVESTOCK AUCTION</b> Belen, NM				
Feeder Steers	300-400 lbs	112.00-135.00	Feeder Heifers	300-400 lbs 86.00-106.50
Medium &	400-500 lbs	97.00-112.00	Medium &	400-500 lbs 76.00-97.00
Large #1	500-600 lbs	81.00-102.50	Large #1	500-600 lbs 74.00-88.50
	600-700 lbs	86.00-101.50		600-700 lbs 70.00-86.00
	700-800 lbs	70.00-89.00		700-800 lbs 78.00-80.00

<a href="#">Live Cattle Settlements</a>		<a href="#">Feeder Cattle Settlements</a>		Monday
<b>CHICAGO MERCANTILE EXCHANGE LIVESTOCK FUTURES SETTLEMENT</b>				
<b>Live Cattle</b>	<b>Change</b>	<b>Feeder Cattle</b>	<b>Change</b>	
Dec	84.05	Jan	92.87	0.10
Feb	85.82	Mar	93.90	0.40
Apr	88.37	Apr	95.22	0.32
				0.30

<a href="#">Corn Settlements</a>		<a href="#">Soybean Settlements</a>		Monday
<b>CHICAGO BOARD OF TRADE GRAIN FUTURES SETTLEMENT</b>				
<b>Corn</b>	<b>Change</b>	<b>Soybeans</b>	<b>Change</b>	
Dec	3.87 1/4	Jan	10.42	(3 3/4)
Mar	4.03 1/4	Mar	10.47 3/4	(3 3/4)
May	4.13 1/4	May	10.49 1/4	(3 3/4)
				(4)
				(2 1/2)
				(1 1/4)

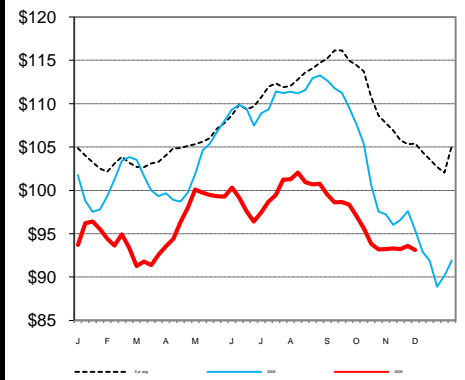
<a href="#">SJ GR710</a>		<b>Wheat</b>		<b>Change</b>
<b>KANSAS CITY BOARD OF TRADE</b>				
<b>WHEAT FUTURES SETTLEMENT</b>				
		Dec	5.54	(2 3/4)
		Mar	5.70 1/4	(2 1/2)
		May	5.81 1/4	(2 1/2)

<a href="#">LM CT100</a>				Monday
<b>5 AREA WKLY ACCUMULATED WTD AVG SLAUGHTER CATTLE PRICE</b>				
	<b>Head Count</b>	<b>Avg Weight</b>	<b>Avg Price</b>	
Live Steer	30,912	1,347	82.77	
Live Heifer	26,751	1,208	82.87	
Dressed Steer	27,190	890	130.05	
Dressed Heifer	13,868	804	130.07	

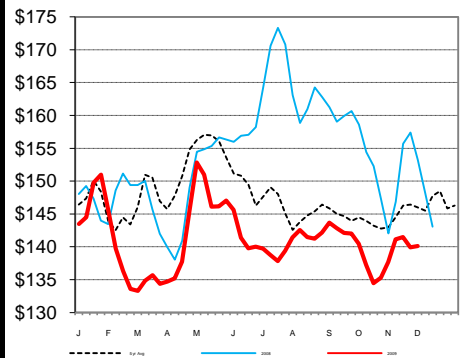
<a href="#">LM XB403</a>						Monday
<b>DAILY ESTIMATED BOXED BEEF CUTOUT VALUES</b>						
<b>Choice</b>	<b>Select</b>	<b>Choice Cuts</b>	78	Loads		
<b>600-900#</b>	<b>600-900#</b>	<b>Select Cuts</b>	56	Loads		
139.48	132.19	<b>Trimming</b>	9	Loads		
0.30	0.22	<b>Grinds</b>	38	Loads		

<a href="#">SJ LS710</a>		<a href="#">JC LS140</a>	
<b>ESTD DAILY CATTLE SLAUGHTER</b>			
Mon (est)	125,000	<b>SLAUGHTER COW MARKET</b>	
Week Ago (est)	124,000	<b>Springfield Livestock Marketing Center</b>	
Year Ago (act)	129,000	Monday	<b>Pct Lean</b> <b>Price</b>
Wk to date (est)	125,000	<b>Breaking</b>	70-80      40.50-44.50
Last Week (est)	124,000	<b>Boning</b>	80-85      38.00-43.00
Last Year (act)	129,000	<b>Lean</b>	85-90      29.50-37.00
<b>Previous Day Estimated:</b>	<b>Steer and Heifer</b>	<b>Friday</b>	<b>Saturday</b>
	<b>Cow and Bull</b>	93,000	14,000
		27,000	8,000

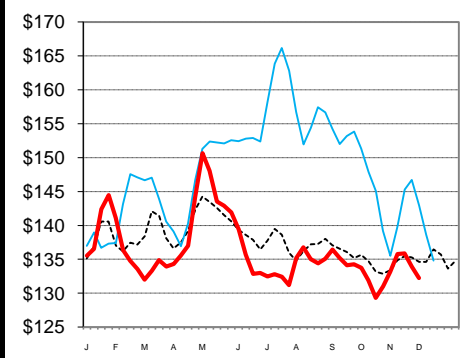
**CME Feeder Cattle Index**



**Weekly Choice Cutout**



**Weekly Select Cutout**



**Weekly Cattle Slaughter**

