

[LM_XB403](#)

DAILY ESTIMATED CUTOUT VALUES

	Choice <u>600-900#</u>	Select <u>600-900#</u>	Choice/Select Spread
Cutout Values	171.58	165.13	6.45
Change from Prior Day	0.41	0.54	
Primal Rib	268.12	244.97	
Primal Chuck	132.90	132.26	
Primal Round	147.74	146.01	
Primal Loin	246.79	231.77	
Primal Brisket	102.62	102.92	
Primal Short Plate	113.09	115.16	
Primal Flank	99.12	92.23	
			Load Count:
			Total 233
			Choice 67
			Select 57
			Trimmings 36
			Grinds 72

Fresh 50% Trimmings: 35 Loads @ 85.03

[NW_LS441](#)

USDA BY-PRODUCT DROP VALUE (STEER)

Value: 11.88 Change: 0.03

[LM_CT100](#)

5 AREA WEEKLY ACCUMULATED WEIGHTED AVG CATTLE PRICE

	Head Count	Avg Weight	Avg Price
Live Steer	8,555	1,352	100.21
Live Heifer	3,115	1,233	100.43
Dressed Steer	37,438	844	159.69
Dressed Heifer	22,877	765	159.87

[SJ_LS710](#)

ESTIMATED DAILY CATTLE SLAUGHTER

Today (est)	126,000
Week Ago (est)	127,000
Year Ago (act)	124,000
Week to Date (est)	510,000
Same Period Last Week (est)	508,000
Same Period Last Year (act)	378,000
Previous Day Estimated	Steer and Heifer 104,000 Cow and Bull 24,000

[SJ_LS712](#)

	W/E 6/28/2008 (Estimate)	Previous week (Estimate)	Last Year (Actual)
BEEF PRODUCTION			
Slaughter	706,000	694,000	696,000
Live Weights	1259	1256	1258
Dressed Weights	765	763	772
Beef Production (millions of pounds)	538.7	527.8	535.4

[LM_XB410](#)

USDA BEEF CARCASS PRICE EQUIVALENT INDEX VALUE

	Choice <u>600-900#</u>	Select <u>600-900#</u>	Dressing percent:	
			<u>Steer</u>	<u>Heifer</u>
Values	155.28	148.86	63.32	63.28
Change	1.84	1.91		

[LM_XB405](#)

USDA NATIONAL CUTTER COW CARCASS CUTOUT

140.46 Change 0.84 90% lean: 180.30

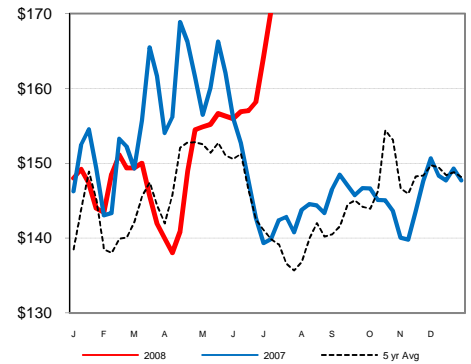
[CME LIVE CATTLE](#)

CME LIVE CATTLE	High	Low	Close	Change
August	104.65	103.52	103.80	(0.20)
October	112.05	111.05	111.52	(0.22)
December	114.90	113.70	114.50	0.07

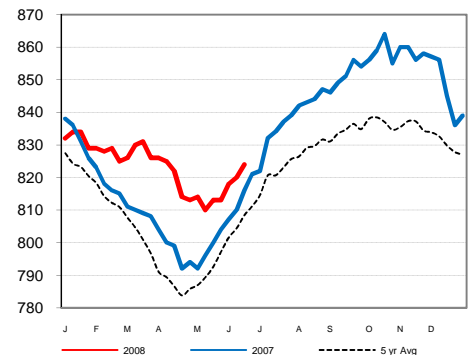
[CME FEEDER CATTLE](#)

CME FEEDER CATTLE	High	Low	Close	Change
August	112.30	111.32	111.57	(0.57)
September	113.65	112.82	113.20	(0.42)
October	115.25	114.52	115.05	(0.25)

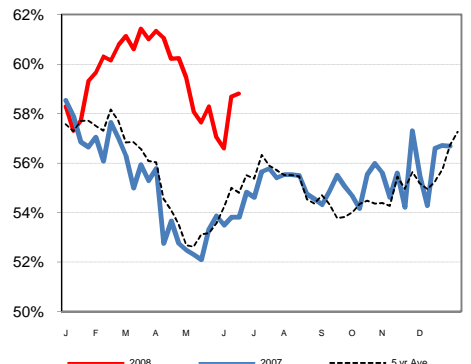
Weekly Choice Cutout



Weekly Steer Dressed Weights



Weekly Grading (Choice & Higher)



Weekly Ch/Se Spread

