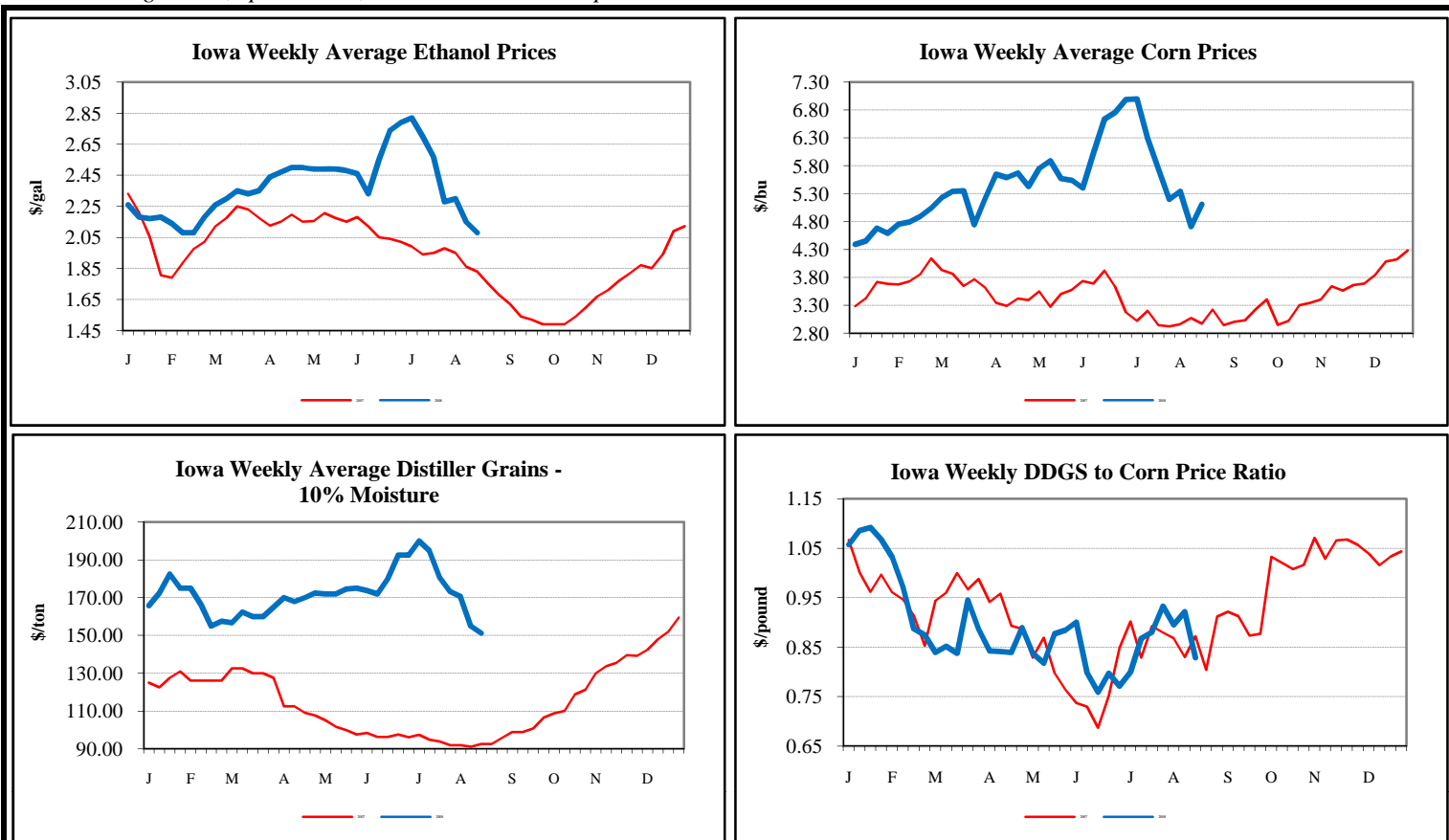


Prices are negotiated, spot market, and FOB the ethanol plant.



	<u>This Week</u>	<u>Last Week</u>	<u>Year Ago</u>	<u>Internet Report Link</u>
Ethanol (\$/gal)				
Iowa	1.95-2.20	2.10-2.20	1.75-1.90	Iowa Ethanol
Nebraska	1.94-2.22	2.08-2.18	1.72-1.90	Nebraska Ethanol
South Dakota	1.88-2.08	2.08-2.35	1.68-1.94	South Dakota Ethanol
Illinois	2.02-2.25	2.16-2.21	---	Eastern Cornbelt Ethanol
Distiller Grains (\$/ton)				
10% Moisture				
Iowa	145.00-155.00	145.00-160.00	90.00-95.00	Iowa Ethanol
Nebraska	150.00-175.00	145.00-180.00	---	Nebraska Ethanol
South Dakota	140.00-150.00	150.00-160.00	87.00-97.00	South Dakota Ethanol
Eastern Cornbelt	138.00-152.00	135.00-145.00	---	Eastern Cornbelt Ethanol
65% Moisture				
Iowa	40.00-76.50	45.00-76.50	30.00-35.50	Iowa Ethanol
Nebraska	50.00-65.00	58.00-70.00	36.00-46.00	Nebraska Ethanol
South Dakota	41.00-51.00	41.00-51.00	27.00-30.00	South Dakota Ethanol
Eastern Cornbelt	70.00-85.00	50.00-60.00	---	Eastern Cornbelt Ethanol
Corn (\$/bu)				
Iowa	4.9175-5.1775	4.5625-4.7425	2.8050-3.2250	Iowa Ethanol
Nebraska	5.2275-5.3775	4.7625-5.0225	3.0450-3.1850	Nebraska Ethanol
South Dakota	5.1600-5.2600	4.6400-4.9200	3.0200-3.1900	South Dakota Ethanol
Eastern Cornbelt	5.2775-5.3775	4.8425-4.9525	---	Eastern Cornbelt Ethanol
Nearby Futures				
CME Group				
Corn (\$/bu)	5.5775	5.2225	3.2150	CME Group
Ethanol (\$/gal)	2.2490	2.2280	1.8000	CME Group
NYMEX				
RBOB Gasoline (\$/gal)	2.9120	3.0027	1.9783	New York Mercantile Exchange
Natural Gas (mmBtu)	8.1360	8.5710	---	New York Mercantile Exchange