

[LM_XB403](#)

DAILY ESTIMATED CUTOUT VALUES

	Choice <u>600-900#</u>	Select <u>600-900#</u>	Choice/Select Spread
Cutout Values	156.83	152.16	4.67
Change from Prior Day	0.33	0.01	
Primal Rib	233.86	228.97	
Primal Chuck	114.79	114.26	
Primal Round	134.97	133.31	
Primal Loin	238.53	221.45	
Primal Brisket	89.00	88.66	
Primal Short Plate	111.23	113.26	
Primal Flank	96.16	93.33	
			Load Count:
			Total 333
			Choice 155
			Select 115
			Trimmings 9
			Grinds 55

Fresh 50% Trimmings: 9 Loads @ 87.37

[NW_LS441](#)

USDA BY-PRODUCT DROP VALUE (STEER)

Value: 10.68 Change: 0.04

[LM_CT100](#)

5 AREA WEEKLY ACCUMULATED WEIGHTED AVG CATTLE PRICE

	Head Count	Avg Weight	Avg Price
Live Steer	21	1,275	94.00
Live Heifer	0		
Dressed Steer	0		
Dressed Heifer	0		

[SJ_LS710](#)

ESTIMATED DAILY CATTLE SLAUGHTER

Today (est)	130,000
Week Ago (est)	128,000
Year Ago (act)	124,000
Week to Date (est)	515,000
Same Period Last Week (est)	510,000
Same Period Last Year (act)	500,000
Previous Day Estimated	Steer and Heifer 104,000 Cow and Bull 24,000

[SJ_LS712](#)

	W/E 5/10/2008 (Estimate)	Previous week (Estimate)	Last Year (Actual)
BEEF PRODUCTION			
Slaughter	698,000	699,000	672,000
Live Weights	1260	1265	1231
Dressed Weights	766	768	751
Beef Production (millions of pounds)	532.7	535.2	503.5

[LM_XB410](#)

USDA BEEF CARCASS PRICE EQUIVALENT INDEX VALUE

	Choice <u>600-900#</u>	Select <u>600-900#</u>	Dressing percent:	
			<u>Steer</u>	<u>Heifer</u>
Values	143.47	138.80	63.44	63.51
Change	0.16	unch		

[LM_XB405](#)

USDA NATIONAL CUTTER COW CARCASS CUTOUT

130.12 Change 0.40 90% lean: 165.17

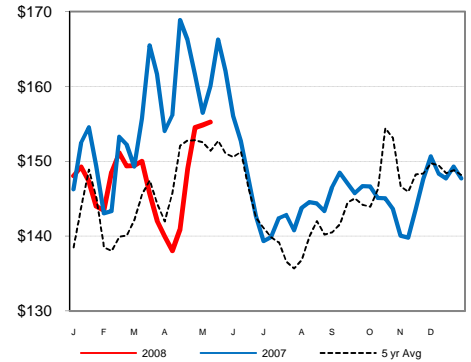
[CME LIVE CATTLE](#)

CME LIVE CATTLE	High	Low	Close	Change
June	94.75	94.25	94.35	(0.27)
August	100.30	99.42	99.50	(0.72)
October	106.30	105.75	105.95	(0.32)

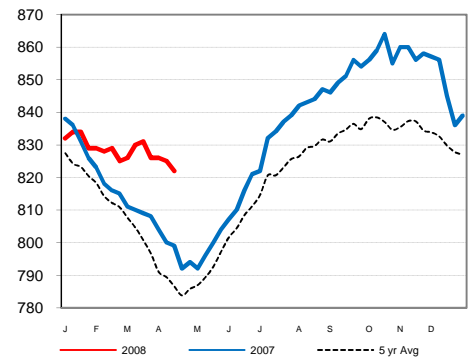
[CME FEEDER CATTLE](#)

CME FEEDER CATTLE	High	Low	Close	Change
May	109.00	108.35	108.60	0.15
August	114.00	112.20	113.27	0.52
September	114.90	113.85	114.55	0.45

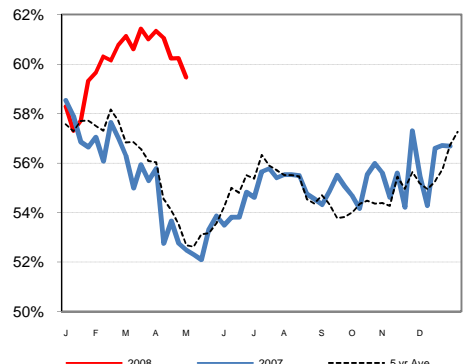
Weekly Choice Cutout



Weekly Steer Dressed Weights



Weekly Grading (Choice & Higher)



Weekly Ch/Se Spread

