

Grain Truck and Ocean Rate Advisory: Quarterly Updates

Transportation and Marketing Programs
 Transportation Services Division
www.ams.usda.gov/AgTransportation

Truck Advisory

Table 1: U.S. Grain Truck Market, 4th Quarter 2013

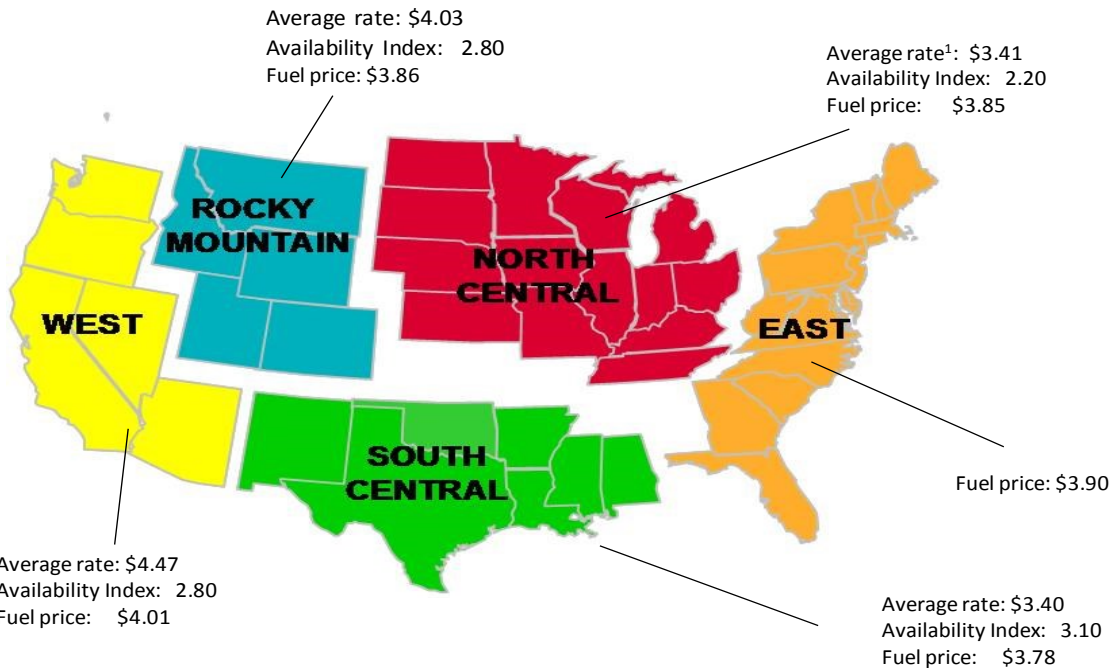
Region	25 miles	100 miles	200 miles	Truck availability	Truck usage	Future truck usage
Rate per mile, per truckload				1=Very Easy to 5=Very Difficult	1=Much Lower to 5=Much Higher	
National average²	4.71	3.61	3.35	2.40	3.20	3.20
North Central region	4.45	3.10	2.69	2.20	2.80	2.90
Rocky Mountain	4.84	3.63	3.63	2.80	3.10	3.90
South Central	3.71	3.25	3.25	3.10	3.80	3.30
West	5.26	4.26	3.90	2.80	3.20	2.20

¹Rates are based on trucks with 80,000 lb gross vehicle weight limit, and are quoted in U.S. dollar

²National average is based on rates received from various States, but not every State is represented.

Source: Transportation and Marketing Programs/AMS/USDA

Figure 1: U.S. Grain Truck Market, 4th Quarter 2013



¹Average rate per loaded mile, based on truck rates for trips of 25, 100, and 200 miles

Note: Fuel prices are a quarterly average (unit per gallon)

Fuel Price Data Source: Energy Information Administration U.S. Department of Energy, www.eia.doe.gov

Truck Usage

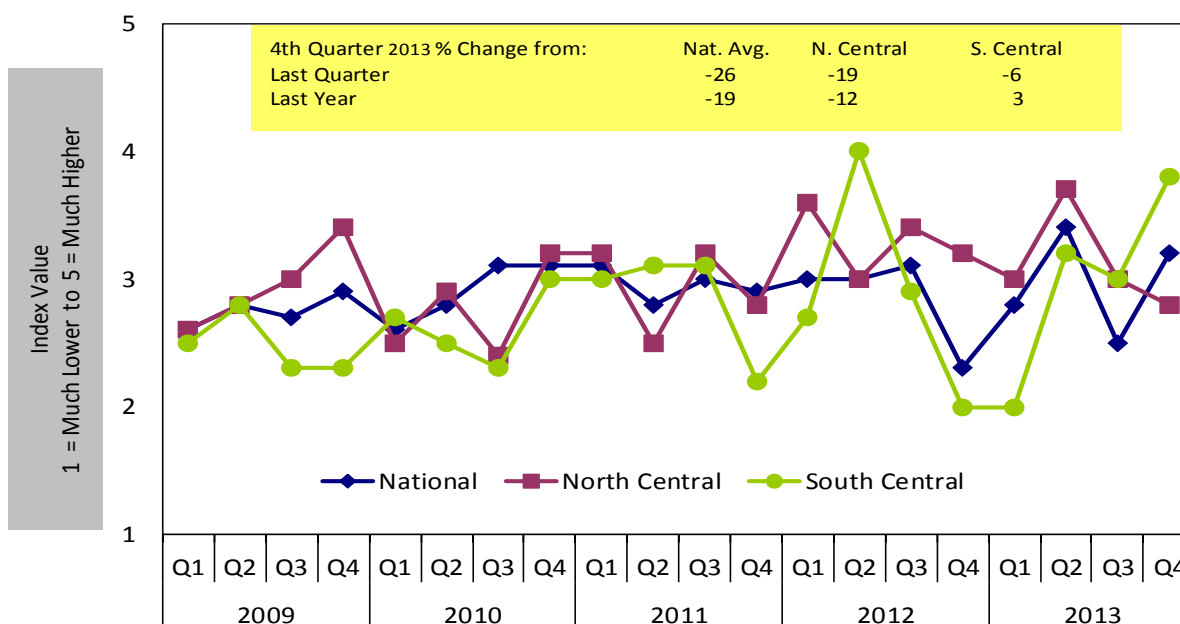
Table 2: Regional Truck Usage Index

Current Truck Usage 1 = Much Lower to 5 = Much Higher					Future Truck Usage 1 = Much Lower to 5 = Much Higher			
2011	1st Qtr	2nd Qtr	3rd Qtr	4th Qtr	1st Qtr	2nd Qtr	3rd Qtr	4th Qtr
National	3.10	2.80	3.00	2.90	3.10	3.00	3.10	2.70
North Central	3.20	2.50	3.20	2.80	2.80	2.90	3.00	2.80
Rocky Mountain	n/a	n/a	n/a	n/a	n/a	n/a	n/a	n/a
South Central	3.00	3.10	3.10	2.60	3.30	2.50	3.00	2.60
West	n/a	n/a	n/a	n/a	n/a	n/a	n/a	n/a
2012	1st Qtr	2nd Qtr	3rd Qtr	4th Qtr	1st Qtr	2nd Qtr	3rd Qtr	4th Qtr
National	3	3.5	3.1	2.3	3.2	2.2	3.5	2.2
North Central	3.6	3	3.4	3.2	2.8	2.4	4	3.1
Rocky Mountain	n/a	n/a	n/a	n/a	n/a	n/a	n/a	n/a
South Central	2.7	4	2.9	3	4	2	3.5	2
West	n/a	n/a	n/a	2	n/a	n/a	n/a	1.5
2013	1st Qtr	2nd Qtr	3rd Qtr	4th Qtr	1st Qtr	2nd Qtr	3rd Qtr	4th Qtr
National	2.80	3.40	2.50	3.20	3.20	3.40	3.00	3.20
North Central	3.00	3.70	3.00	2.80	3.00	3.70	3.00	2.90
Rocky Mountain	n/a	3.00	2.00	3.10	n/a	3.00	3.00	3.90
South Central	2.00	3.20	3.00	3.80	4.00	3.20	3.00	3.30
West	3.00	3.00	2.00	3.20	3.00	3.00	3.00	2.20

n/a: not data available

The truck usage index tracks the trends of truck utilization at grain elevators

Figure 2: National Truck Usage, 4th Quarter 2013



Source: Transportation and Marketing Programs, AMS/USDA

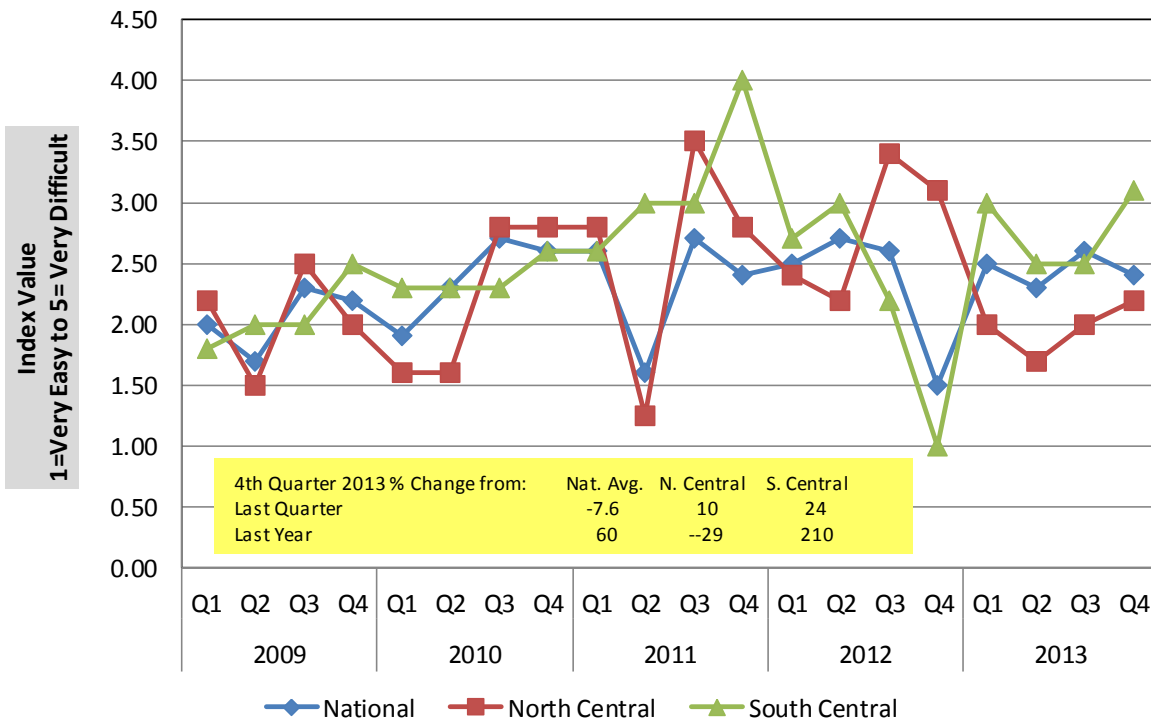
Truck Availability

Table 3: Quarterly National Truck Availability Index

Region	1=Very Easy		5=Very Difficult		Current qtr as % change from	
	4th Quarter 2013	Previous Quarter	Same Quarter Last Year	Previous Qtr	Same Qtr Last Year	
National	2.4	2.6	1.5	-8	60	
North Central	2.2	2.0	3.1	10	-29	
South Central	3.1	2.5	1.0	24	210	

The truck availability index tracks the trends in perceived ease of hiring a truck as reported by grain elevators.

Figure 3: National Truck Availability



Truck Rates

Table 4 : Average Grain Truck Rates for Short and Long Hauls, 4th Quarter 2013 (\$/mile per truckload)

Region	25 miles	100 miles	200 miles	% increase from:					
				Last qtr			Same qtr Last year		
				25 mi	100 mi	200 mi	25 mi	100 mi	200 mi
National Average	\$4.71	\$3.61	\$3.35	10%	1%	12%	17%	31%	34%
North Central	\$4.45	\$3.10	\$2.69	0%	-7%	8%	29%	14%	9%
Rocky Mountain	\$4.84	\$3.63	\$3.63	9%	17%	35%	n/a	n/a	n/a
South Central	\$3.71	\$3.25	\$3.25	-12%	-6%	22%	-20%	8%	0%
West	\$5.26	\$4.26	\$3.90	42%	31%	20%	n/a	n/a	n/a

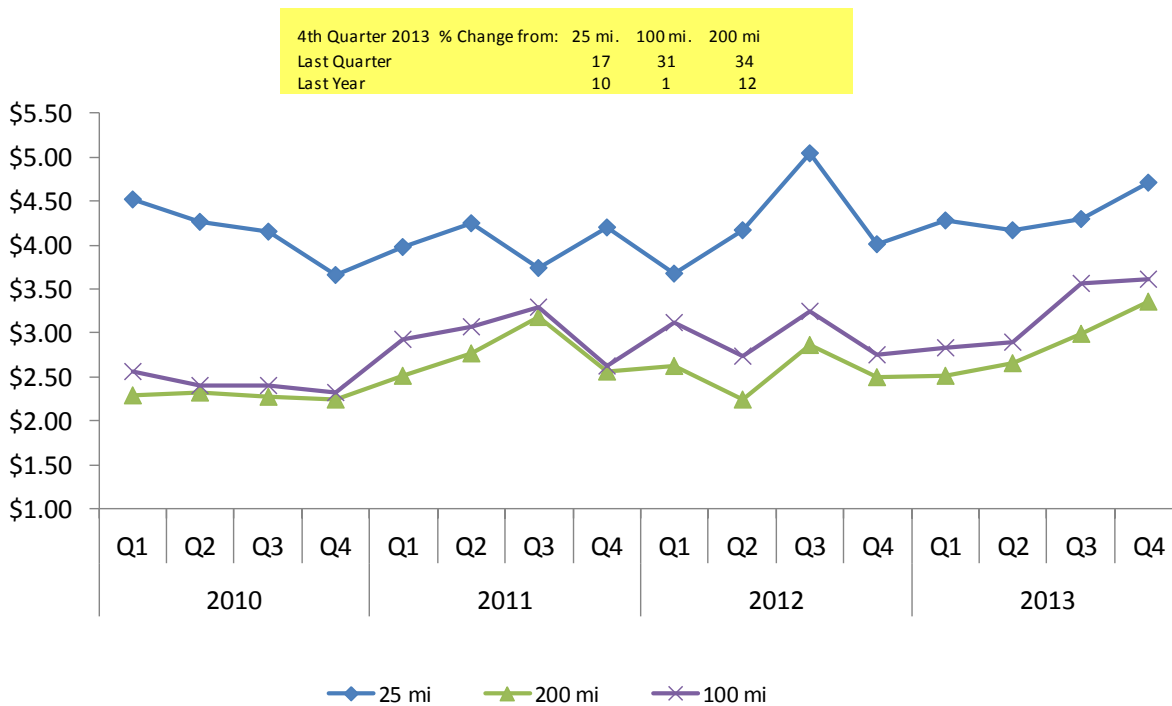
n/a: data not available

Rates are based on trucks with 80,000 lbs gross vehicle weight limit

Source: Transportation and Marketing Programs/AMS/USDA

A truck is assumed to carry 55,000 lbs or 25 metric tons of grain. Rates per metric ton per mile can be calculated from rates per truckload.

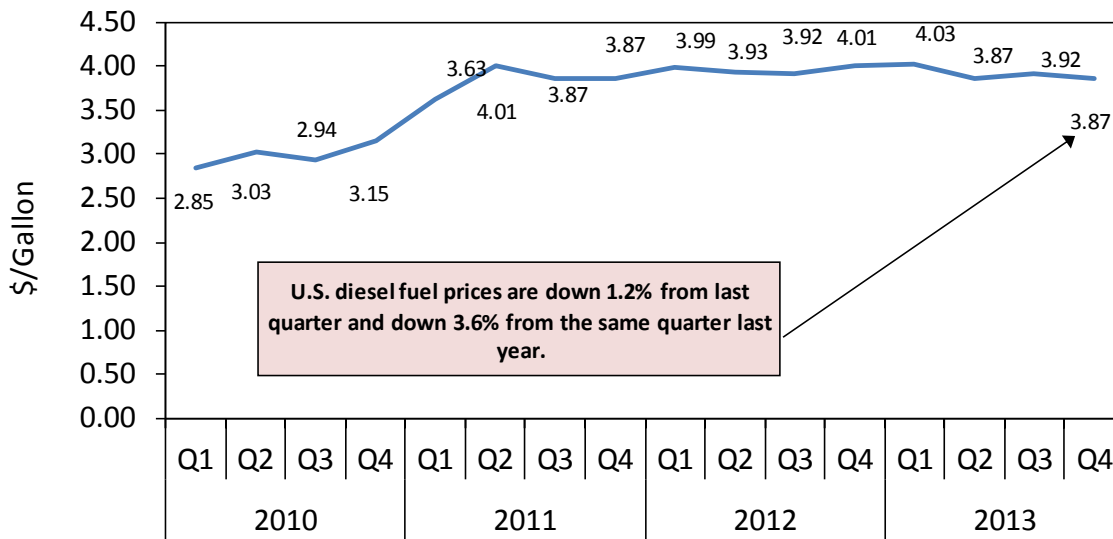
Figure 4: National Average Truck Rates by Trip Distance



U.S. Diesel Fuel Prices

The **diesel fuel price** provides a proxy for trends in U.S. truck rates. Diesel fuel is a significant expense for grain movements.

Figure 5: U.S. Average On-Highway Diesel Fuel Prices



Source: Energy Information Administration/U.S. Department of Energy

Table 5: 4th Quarter 2013 Average Diesel Fuel Prices (All Types - \$/Gallon)

Location	Price	Change From	
		Last Quarter	Same Qtr Last Year
East Coast	3.90	-0.03	-0.16
New England	4.04	-0.01	-0.16
Central Atlantic	3.95	-0.04	-0.22
Lower Atlantic	3.83	-0.03	-0.13
Midwest	3.85	-0.05	-0.13
Gulf Coast	3.78	-0.06	-0.13
Rocky Mountain	3.86	-0.05	-0.19
West Coast	4.01	-0.06	-0.13
California	4.08	-0.07	-0.12
U.S.	3.87	-0.05	-0.14

Source: Energy Information Administration/U.S. Department of Energy

Ocean Rates

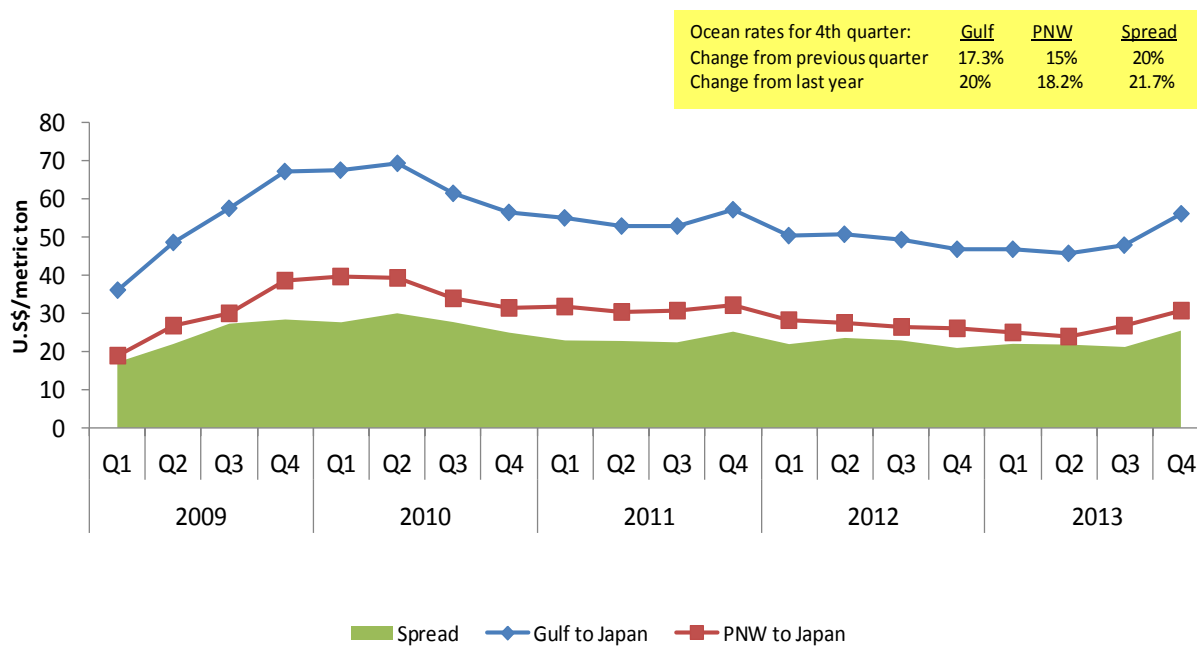
Table 6: Ocean Shipping Rates for Bulk Grain (\$/metric ton)

Gulf to										
Country	1 st Qtr 2012	2 nd Qtr 2012	3 rd Qtr 2012	4 th Qtr 2012	Average	1 st Qtr 2013	2 nd Qtr 2013	3 rd Qtr 2013	4 th Qtr 2013	Average
Japan	50.18	50.8	49.18	46.80	49.24	46.73	45.78	47.79	56.05	49.09
Rotterdam	19.91	20.76	21.81	18.68	20.29	19.57	20.97	24.85	26.07	22.87
China	48.33	49.07	46.82	43.69	46.98	43.73	43.47	45.71	54.13	46.76
Mexico	18.37	18.62	18.53	16.73	18.06	17.89	17.58	17.85	17.13	17.61
Colombia: Atlantic Port (East)	20.59	21.78	20.86	20.47	20.93	22.91	22.75	22.02	23.77	22.86
Colombia: Pacific Ports (West)	28.35	28.79	29.65	28.93	28.93	30.03	30.71	30.62	31.92	30.82

PNW to										
Country	1 st Qtr 2012	2 nd Qtr 2012	3 rd Qtr 2012	4 th Qtr 2012	Average	1 st Qtr 2013	2 nd Qtr 2013	3 rd Qtr 2013	4 th Qtr 2013	Average
Japan	28.28	27.28	26.31	25.90	26.94	24.84	24.00	26.63	30.62	26.52
China	26.54	25.71	23.88	23.58	24.93	23.08	22.88	25.15	28.62	24.93

Source: O'Neil Commodity Consulting

Figure 6: Grain Vessel Rates and Spread, U.S. to Japan



Source: Drewry Shipping Consultants/O'Neil Commodity Consulting

Contacts and Links

Surajudeen Olowolayemo
(Economist)

Surajudeen.Olowolayemo@ams.usda (202) 720-0119

April Taylor
(Economist)

April.Taylor@ams.usda.gov (202) 295-7374

Brian McGregor
(Supervisory Agricultural
Marketing Specialist)

Brian.McGregor@ams.usda.gov (202) 720-0035

Pierre Bahizi
(Economist)

Pierre.Bahizi@ams.usda.gov (202) 690-0992

Subscription Information: Send relevant information to GTRContactUs@ams.usda.gov for an electronic copy of this report (printed copies available upon request).

Related Websites

[Grain Transportation Report](#)

[Mexico Transport Cost Indicator Report](#)

[Brazil Soybean Transportation Indicator](#)

[Agricultural Refrigerated Truck Quarterly](#)

The U.S. Department of Agriculture (USDA) prohibits discrimination in all its programs and activities on the basis of race, color, national origin, sex, religion, age, disability, political beliefs, sexual orientation or marital or family status. (Not all prohibited bases apply to all programs). Persons with disabilities who require alternative means for communication of program information (Braille, large print, audiotape, etc.) should contact the USDA's TARGET Center at (202)720-2600 (Voice and TDD).

To file a complaint of discrimination, write USDA, Director of Civil Rights, Room 326-W, Whitten Building, 14th and Independence Avenue, SW, Washington, DC 20250-9410, or call (202) 720-5964 (voice and TDD). USDA is an equal opportunity provider and employer.