



Fruit &  
Vegetable  
Program

Specialty Crops  
Inspection  
Division

1400 Independence Avenue, SW.  
Room 1536-S, STOP 0240  
Washington, DC 20250-0240

March 4, 2015

## **AMENDMENT NO. 1**

### **COMMODITY SPECIFICATION CANNED FRUIT DATED SEPTEMBER 2014**

The purpose of this amendment is 1) to revise Section V. Exhibits to update America's Finest Labels with the USDA MyPlate information; and 2) to update the material code and UPC code for Applesauce Unsweetened Can-6/10.

All other terms and conditions remain unchanged.

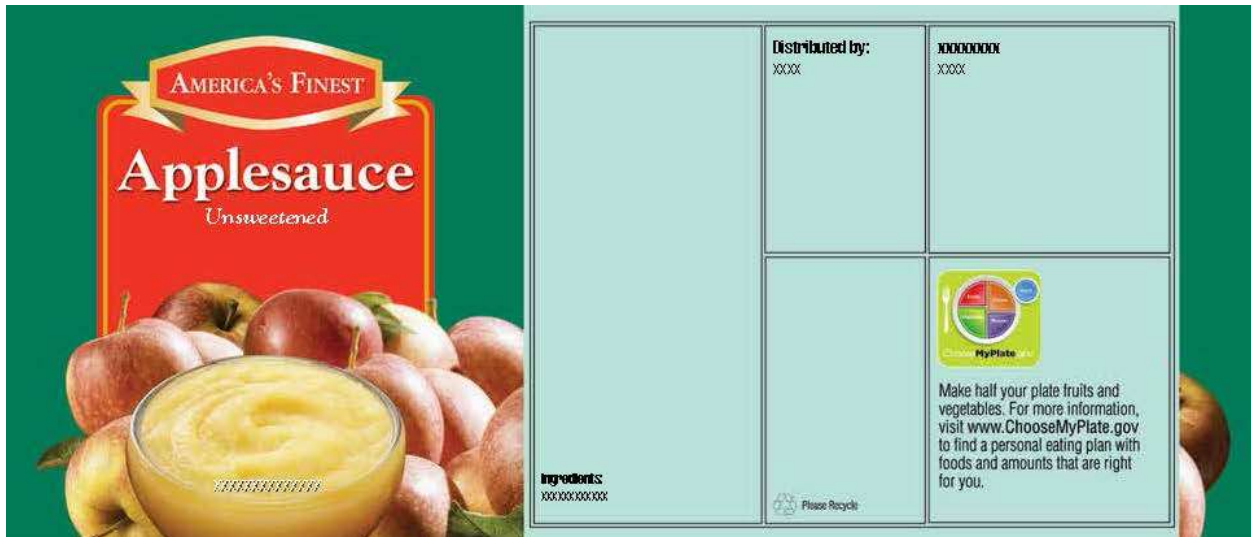
Attachments

## V. Exhibits

**Exhibit 1-1**  
**Can Label for Canned Applesauce, No. 10 size**

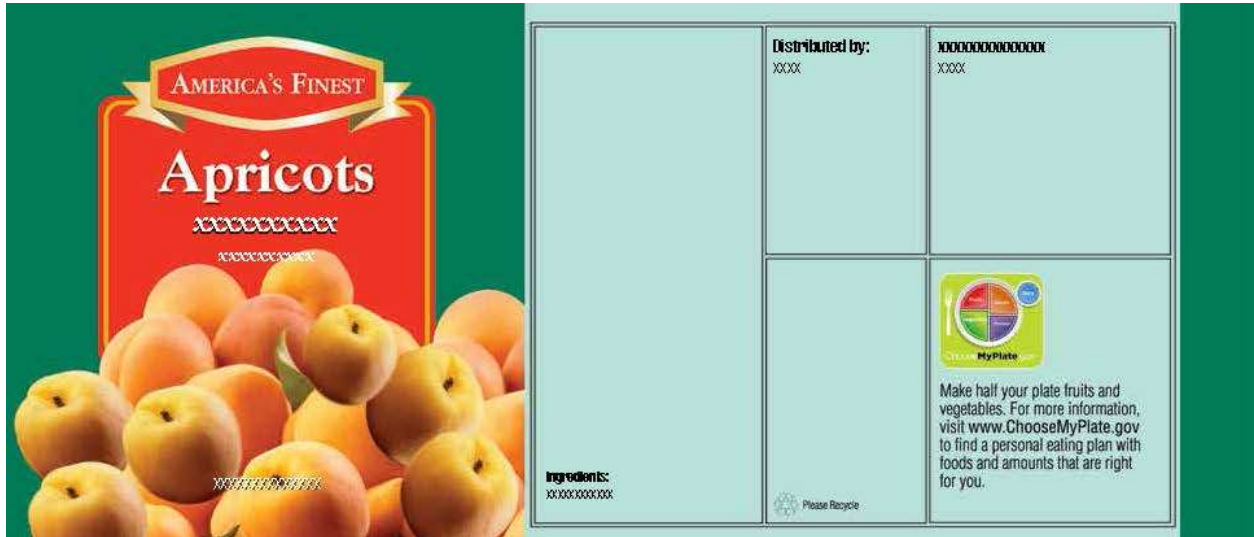


**Exhibit 1-2**  
**Can Label for Canned Applesauce, No. 300 size**

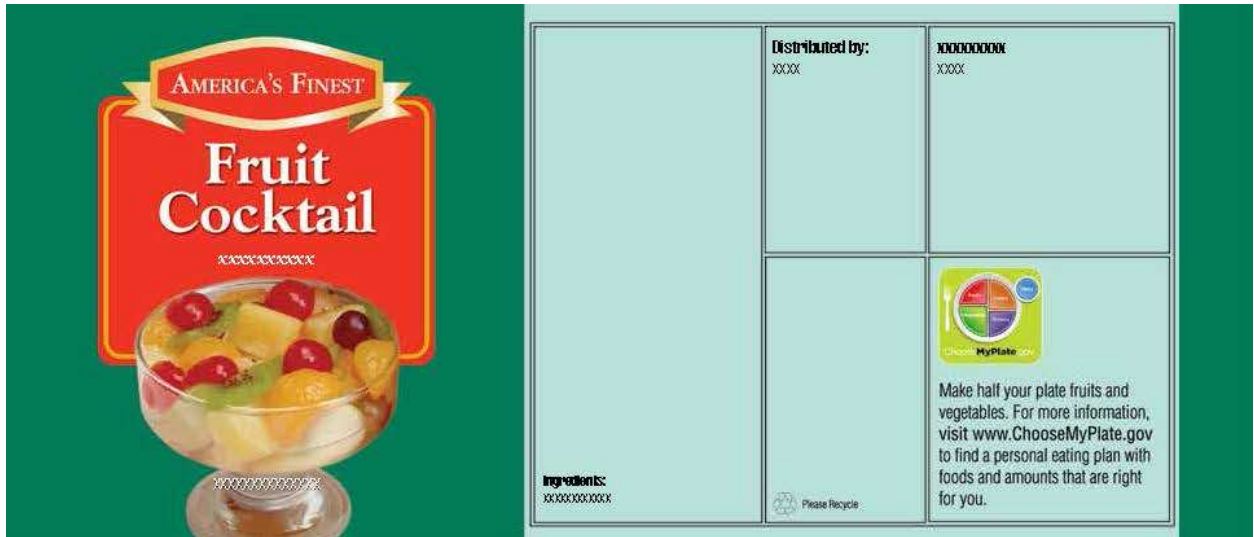


<http://www.choosemyplate.gov/print-materials-ordering/graphic-resources.html>

**Exhibit 1-5  
Can Label for Canned Apricots, No. 300 size**

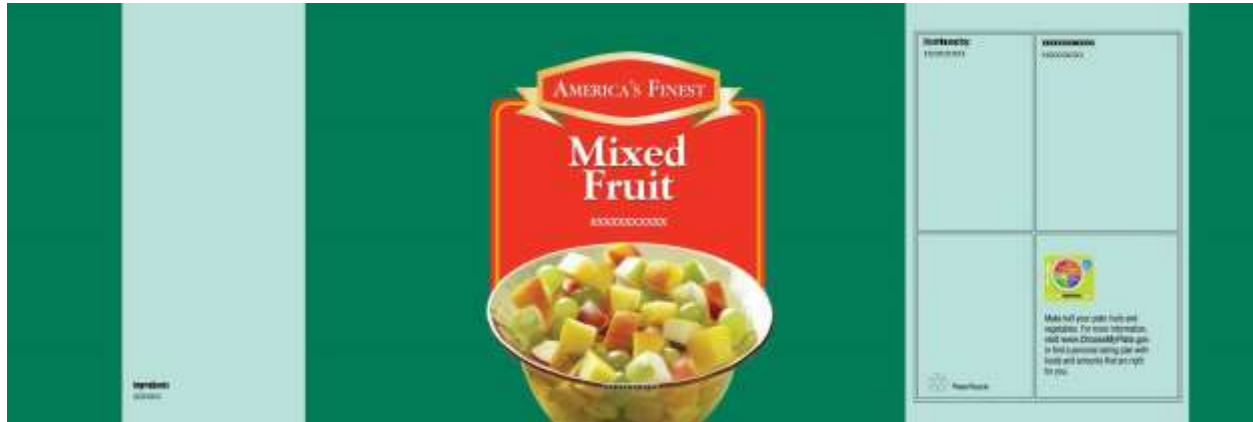


**Exhibit 1-7  
Can Label for Canned Fruit Cocktail, No. 300 size**

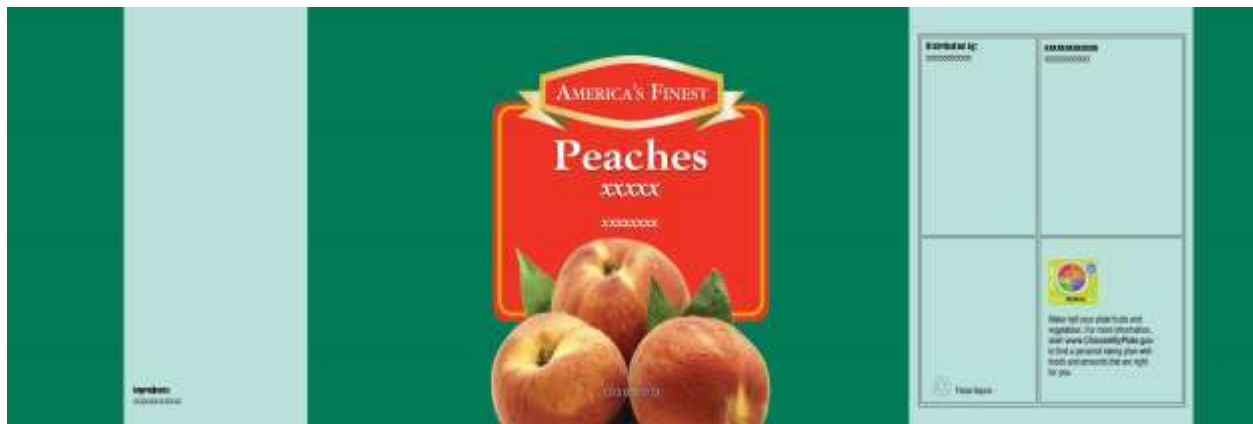


<http://www.choosemyplate.gov/print-materials-ordering/graphic-resources.html>

**Exhibit 1-8**  
**Can Label for Canned Mixed Fruit, No. 10 size**

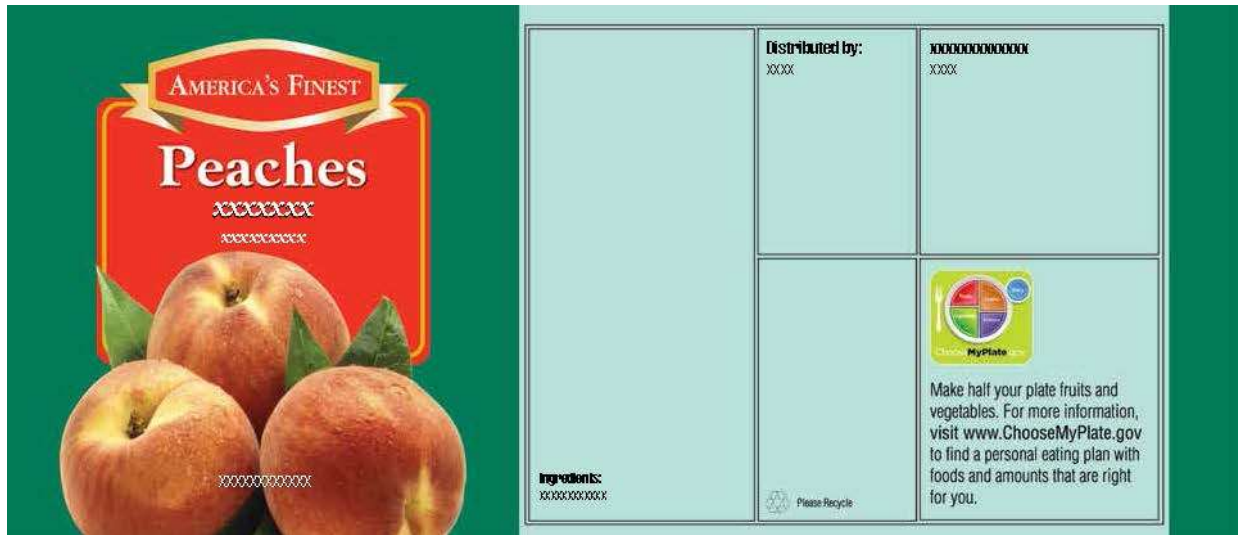


**Exhibit 1-9**  
**Can Label for Canned Peaches, No. 10 size**

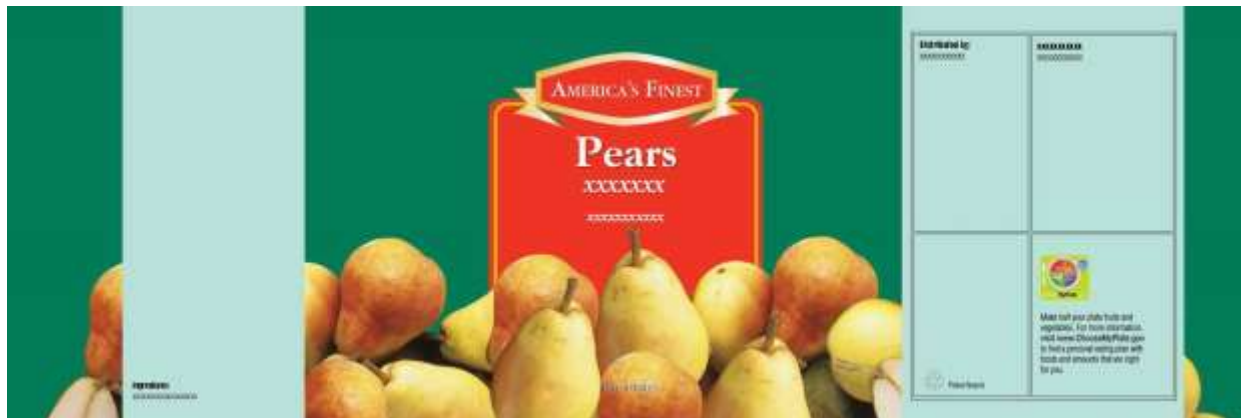


<http://www.choosemyplate.gov/print-materials-ordering/graphic-resources.html>

**Exhibit 1-10**  
**Can Label for Canned Peaches, No. 300 size**

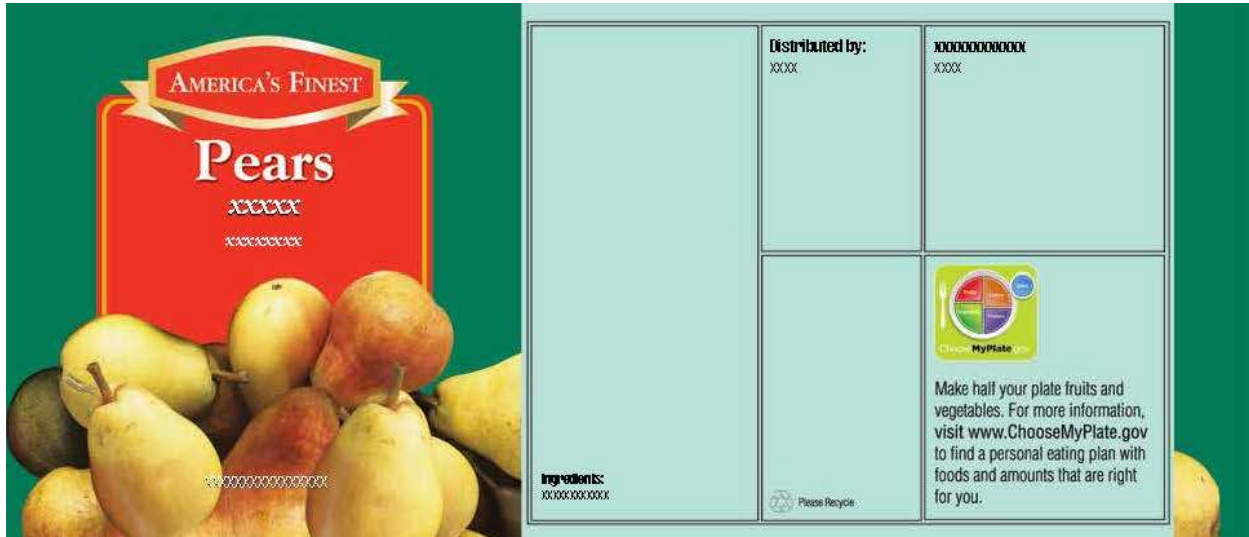


**Exhibit 1-11**  
**Can Label for Canned Pears, No. 10 size**

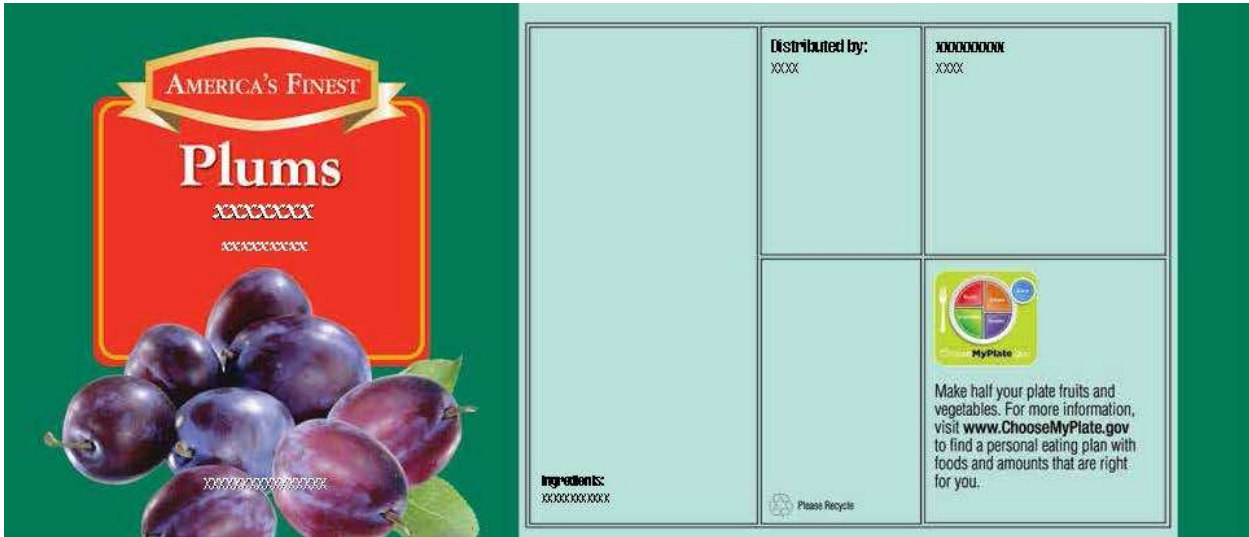


<http://www.choosemyplate.gov/print-materials-ordering/graphic-resources.html>

**Exhibit 1-12**  
**Can Label for Canned Pears, No. 300 size**



**Exhibit 1-13**  
**Can Label for Canned Plums, No. 300 size**



<http://www.choosemyplate.gov/print-materials-ordering/graphic-resources.html>

**Exhibit 1-14**  
**Can Label for Canned Pineapple, No. 10 size**



**Exhibit 1-15**  
**Can Label for Canned Pineapple, No. 2 size**



<http://www.choosemyplate.gov/print-materials-ordering/graphic-resources.html>

**Exhibit 5**  
**Universal Product Codes**

| <u>Canned Fruit</u>             | <u>WBSCM<br/>Material</u> | <u>Primary Container</u> | <u>Secondary Container</u> |
|---------------------------------|---------------------------|--------------------------|----------------------------|
| APPLESAUCE UNSWEETENED CAN-6/10 | 110541                    | 7 15001 10541 7          | 1 07 15001 10541 4         |