

DAILY DIRECT HOGS PLANT DELIVERED as of 1:30 PM

Negotiated Barrow and Gilt:	Carcass Base Price		Live Price	
<u>NATIONAL - AMS 2675/LM_HG203:</u>				
Range:	\$84.00	\$90.00	\$56.75	\$70.85
Weighted Average:	\$88.57		\$67.60	
Change from Prior Day:	(-\$0.76)		(-\$2.47)	
Head Count:	2,669		734	

IOWA/MINNESOTA - AMS 2675/LM_HG206:

Weighted Average:	\$89.41	*
Change from Prior Day:	(-\$0.15)	*

WESTERN CORNBELT - AMS 2675/LM_HG212:

Weighted Average:	\$88.72	*
Change from Prior Day:	(-\$0.81)	*

EASTERN CORNBELT - AMS 2675/LM_HG210:

Weighted Average:	\$87.92	\$67.60
Change from Prior Day:	(-\$1.08)	*

*Price not reported due to confidentiality

NATIONAL DAILY PORK REPORT FOB PLANT- AMS 2498/LM_PK602:

Carcass Cutout Values	100.85	Change:	0.58
Primal Loin	101.02		(-0.58)
Primal Butt	132.97		1.84
Primal Picnic	76.55		0.37
Primal Rib	176.33		0.63
Primal Ham	81.54		(-1.37)
Primal Belly	129.33		5.77
Total Loads	305.04		
Pork Cuts	254.31	lds.	
Trim/Process Pork	50.72	lds.	

Weekly USDA By-Product Drop Value (Hog): 4.34 0.03

DAILY HOG SLAUGHTER UNDER FIS - AMS 3208/SJ_LS710

Today (est)	468,000	Saturday:	36,000
Week Ago (est)	462,000		9,000
Year Ago (act)	461,157		72,849
Week to Date (est)	2,368,000		2,404,000
Same Period Last Week (est)	2,370,000		2,379,000
Same Period Last Year (act)	2,334,176		2,407,025

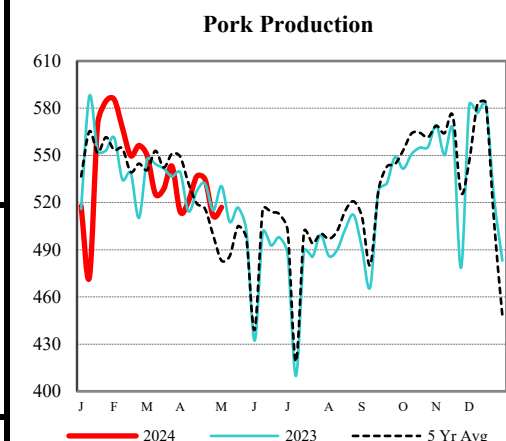
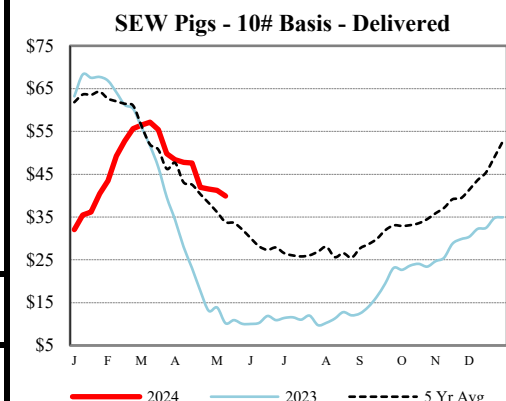
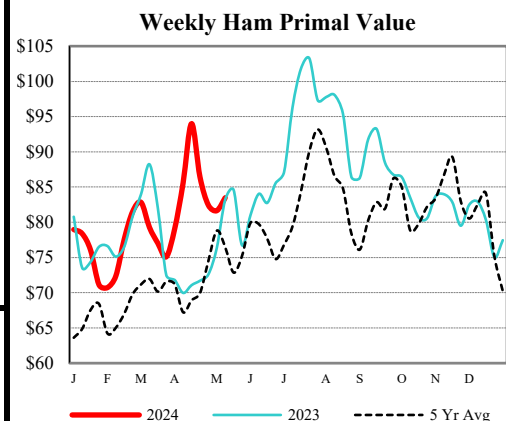
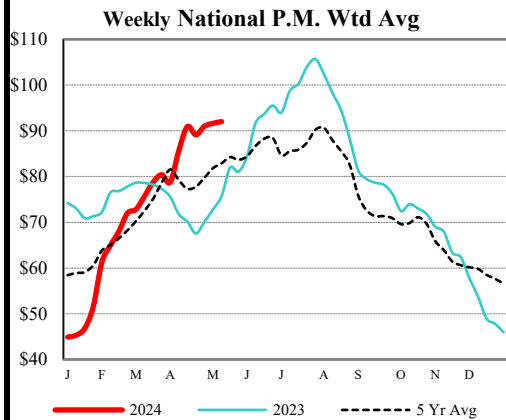
CME Lean Hog Close	High	Low	Change	Settle
APR	N/A			
MAY	N/A			
JUN	N/A			
JLY	N/A			

CME Lean Hog Delayed Futures

US Direct Delivered Feeder Pig Summary for Weekending - AMS 2810 17-May-24

Formula, Cash, & Composite Wtd Avg Prices

		Formula	Cash	Composite
SEW	10-12 lb Basis	42.79	39.81	40.46
Feeder Pigs	40 lb Basis		68.20	68.20



USDA Livestock, Poultry & Grain Market News

Des Moines, Iowa | PH 515-284-4460

Email: Desm.LPGMN@usda.gov

<https://mymarketnews.ams.usda.gov/viewReport/2872>

[USDA AMS Livestock, Poultry & Grain Market News](#)