



National Daily Cow and Boneless Beef Summary

Agricultural Marketing Service
Livestock, Poultry, and Grain Market News

May 16, 2024

Boneless Processing Beef and Beef Trimmings 100% Lean Items

LM_XB 401	National		Central		LM_XB 405	Loads	Wtd Avg	Change
	Loads	Wtd Avg	Loads	Wtd Avg				
Fresh 92-94%					Cutter Cow Carcass Cutout		273.95	2.15
Fresh 90%	9.0	351.74	6.5	352.84	Inside Rounds - Boxed	3.9	409.09	(1.02)
Fresh 85%	5.3	332.25	3.8	333.91	Outside Rounds	0.0	0.00	0.00
Fresh 81%					Eye of Rounds	0.9	395.57	1.34
Fresh 65%					Flats and Eyes - Combc	2.3	400.14	6.80
Fresh 50%	14.2	83.38			Striploins	7.0	512.50	(0.02)
					S.P.B. - Combo	2.7	395.67	0.92

Ground Beef

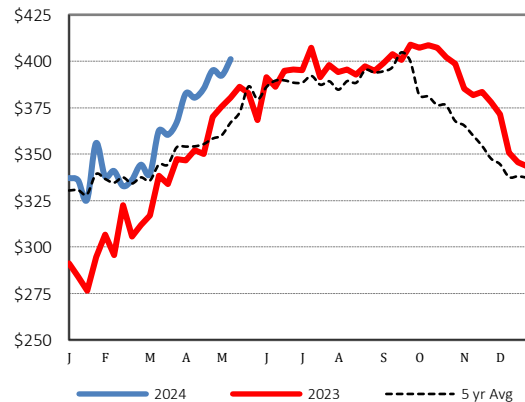
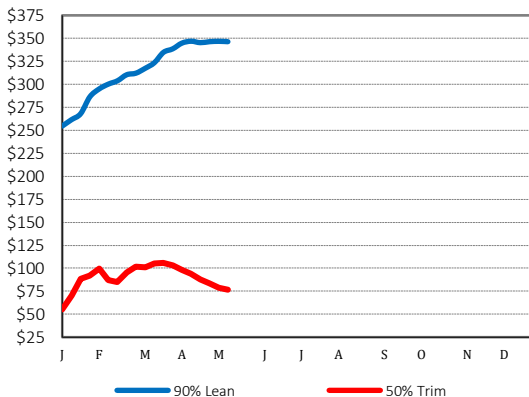
LM_XB 403	Loads	Wtd Avg	Steer/Heifer/Cow Ground Beef	
Fresh 73%	3.8	230.93		
Fresh 81%	4.1	307.32		
Fresh 93%	0.5	399.40		
Ground Chuck	0.4	329.12		
Ground Round				
Ground Sirloin				

	Loads	Wtd Avg
Fresh 81%	0.0	0.00
Fresh 93%		
Ground Chuck		

Daily Estimated Slaughter Daily Cow and Bull Bids

SJ_LS 710	Daily Estimated Slaughter		LM_CT 138	Daily Cow and Bull Bids	
Today (est)		124,000	National	Low	High
Week Ago (est)		122,000	Breaker	192.00	278.00
Year Ago (act)		123,504	Boner	205.00	266.00
Week to Date (est)		487,000	Lean	212.00	276.00
Same Period Last Week (est)		489,000	Bulls	211.00	302.00
Same Period Last Year (act)		501,669			
Previous Day Est	Steer and Heifer	101,000	Northwest	Low	High
	Cow and Bull	23,000	Breaker	192.00	251.00
			Boner	207.00	256.00
			Lean	212.00	266.00
			Bulls	227.00	281.00

2024 90% Lean vs 50% Lean 100% Lean Inside Rounds



Des Moines, Iowa | 515-284-4460 | dsm.lpgmn@ams.usda.gov

www.ams.usda.gov/LPSMarketNewsPage