



# Agricultural Refrigerated Truck Quarterly

a quarterly publication of the Agricultural Marketing Service

## CONTENTS

National Summary.....	2	Quarterly Truck Availability.....	8	PNW.....	20
Quarterly Overview .....	2	Reported U.S. Shipments .....	11	Southeast.....	23
U.S. Truck Rates .....	3	Reported Shipments by Selected		Great Lakes .....	26
Truck Rates for Selected Routes.....	4	Commodities.....	12	Additional Information .....	29
U.S. Diesel Fuel Prices .....	5	Regional Markets.....	13	Terms and References.....	29
Relationship Between Diesel Fuel and		California.....	13	Contact Us.....	30
Truck Rates.....	6	U.S. Mexico Border .....	16		



# NATIONAL SUMMARY

## Quarterly Overview

### Fruit and Vegetable Shipments

USDA reported third quarter 2023 U.S. truck shipments of fresh produce were 9.33 million tons—17 percent lower than the previous quarter, but 3 percent higher than third quarter 2022.

Also, in third quarter 2023, shipments from California were 3.07 million tons, which was higher than from any other reported origin. Shipments from California accounted for 33 percent of the total reported shipments of fresh fruit and vegetables. Shipments from the next five top regions by volume were as follows: Mexico, 2.19 million tons (23 percent of the total); Pacific Northwest (PNW), 1.48 million tons (16 percent of the total); Canada, 552,000 tons (6 percent of the total); Southeast, 395,000 tons (4 percent of the total); and finally, Great Lakes, 343,000 tons (4 percent of the total).

These top five commodities accounted for 40 percent of reported truck movements in third quarter 2023:

- ▶ Seedless Watermelons (12 percent)
- ▶ Potatoes (11 percent)
- ▶ Apples (7 percent)
- ▶ Dry Onions (6 percent)
- ▶ Grapes (4 percent)

### Truck Rates

The table below provides a snapshot of quarterly truck rates for U.S. produce shipments over four mileage categories—1-500; 501-1,500; 1,501-2,500; and 2,501+ miles. Please note, the U.S. average truck rates provided below were calculated using weighted regional rates and volumes.

### Diesel Fuel

During third quarter 2023, the U.S. diesel fuel price averaged \$4.27 per gallon—up 8 percent from the previous quarter, but down 17 percent from the same quarter in 2022.

### Average U.S. Truck Rates for Selected Routes Between 501 and 1,500 Miles (\$/Mile)

	0-500 miles	501-1,500 miles	1,501-2,500 miles	2,501+ miles
<b>Q3 2022</b>	8.40	3.23	2.86	1.50
<b>Q4 2022</b>	6.82	3.03	2.81	1.39
<b>Q1 2023</b>	5.93	2.63	2.28	1.41
<b>Q2 2023</b>	6.32	2.82	2.33	1.47
<b>Q3 2023</b>	6.84	2.66	2.50	1.35
<b>Q3 Change from Previous Quarter</b>	8%	-6%	7%	-8%
<b>Q3 Change from Same Quarter Last Year</b>	-19%	-18%	-13%	-10%

Source: AMS Transportation Services Division analysis of AMS Specialty Crops Program Market News data.

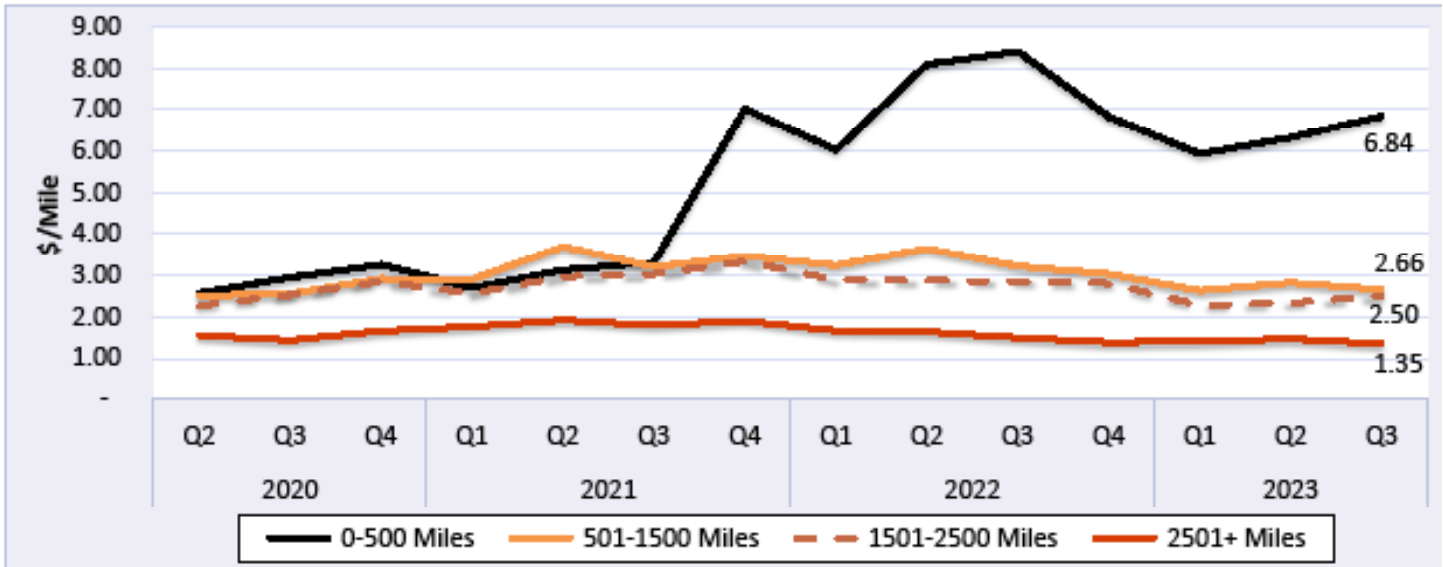
Note: Table values may not conform exactly due to rounding.

Note: The rates for 8 long-haul fruit and vegetable truck corridors are included in the national rate, weighted by commodity and origin volume.



## U.S. Truck Rates

Figure 1: Average Truck Rates for Selected Routes (\$/Mile)



Source: AMS Transportation Services Division analysis of AMS Specialty Crops Program Market News data.

Note: The rates for 8 long-haul fruit and vegetable truck corridors are included in the national rates, weighted by commodity and origin volume.

Table 1: Average U.S. Truck Rates for Selected Routes Between 501 and 1,500 Miles (\$/Mile)

Year	1st Quarter	2nd Quarter	3rd Quarter	4th Quarter
2023	2.63	2.82	2.66	
2022	3.25	3.65	3.23	3.03
2021	2.90	3.70	3.21	3.48
2020	2.56	2.51	2.56	2.92
2019	2.59	2.60	2.47	2.52
2018	2.82	2.99	2.74	2.84
2017	1.86	2.41	2.33	2.56
2016	2.22	2.37	2.49	2.06
2015	2.47	2.63	2.59	2.36
2014	2.32	2.67	2.64	2.49
2013	2.24	2.60	2.62	2.27
2012	2.10	2.54	2.45	2.29
2011	2.02	2.60	2.77	2.26

Source: AMS Transportation Services Division analysis of AMS Specialty Crops Program Market News data.

Note: The rates for 8 long-haul fruit and vegetable truck corridors are included in the national rate, weighted by commodity and origin volume.

Note: Table values may not conform exactly due to rounding.



## AGRICULTURAL REFRIGERATED TRUCK QUARTERLY

Quarter 3, 2023

**Table 2: Quarterly Rates for Key Origins by Month; 501-1,500 miles (\$/Mile)**

U.S. Origin	3rd Quarter, 2023			2nd Quarter, 2023		
	July	August	September	April	May	June
California	3.38	3.30	3.19	2.95	3.31	3.68
Florida	n/a	n/a	n/a	2.53	2.89	2.28
Great Lakes	4.30	4.21	4.11	4.20	4.16	4.30
Mexico-Arizona	3.03	2.53	2.33	2.61	2.91	3.23
Mexico-Texas	2.79	2.80	2.83	2.97	2.84	2.92
New York	3.44	3.44	3.18	3.44	3.44	3.44
Other	2.96	2.96	2.99	2.99	2.97	2.96
PNW	2.50	2.53	2.63	2.63	2.40	2.44
Southeast	3.49	5.28	11.55	4.26	3.52	3.71
Texas	n/a	n/a	n/a	2.98	3.02	n/a

Source: AMS Transportation Services Division analysis of AMS Specialty Crops Program Market News data.

Note: "n/a" indicates rates not available.

## Truck Rates for Selected Routes

**Table 3: Origin-Destination Truck Rates for Selected Routes, 3rd Quarter 2023 (\$/Mile)**

U.S. Origin	Atlanta	Baltimore	Boston	Chicago	Dallas	Los Angeles	Miami	New York	Philadelphia	Seattle
California	3.02	2.80	2.67	2.80	3.22	12.23	2.99	2.88	2.84	3.25
Great Lakes	4.43	4.38	4.31	5.80	3.54	n/a	3.76	4.60	n/a	n/a
Mexico-Arizona	2.61	2.22	n/a	1.98	3.08	2.42	2.42	2.91	2.69	n/a
Mexico-Texas	3.21	2.66	2.58	2.38	3.62	2.05	3.04	2.78	2.77	n/a
Mid-Atlantic	2.90	8.60	4.76	2.13	n/a	n/a	n/a	6.83	7.43	n/a
New York	3.85	5.00	14.12	n/a	n/a	n/a	3.03	17.50	7.61	n/a
Other	3.17	3.26	2.83	3.30	3.18	n/a	n/a	n/a	n/a	n/a
PNW	2.55	2.69	2.58	2.42	2.46	2.52	2.50	2.81	2.58	8.65
Southeast	6.21	3.93	5.03	2.83	2.68	0.62	3.96	3.82	3.58	n/a

Source: AMS Transportation Services Division analysis of AMS Specialty Crops Program Market News data.

Note: "n/a" indicates rates not available.



## AGRICULTURAL REFRIGERATED TRUCK QUARTERLY

Quarter 3, 2023

**Table 4: Origin-Destination Truck Rates for Selected Routes, 3rd Quarter 2023 (\$/Truck)**

U.S. Origin	Atlanta	Baltimore	Boston	Chicago	Dallas	Los Angeles	Miami	New York	Philadelphia	Seattle
California	6,731	7,605	8,121	5,875	4,711	1,367	8,311	8,174	8,005	3,687
Great Lakes	4,274	4,113	4,738	1,450	3,854	n/a	6,149	4,816	n/a	n/a
Mexico-Arizona	4,700	5,217	n/a	3,556	3,017	1,356	5,511	7,272	6,450	n/a
Mexico-Texas	3,689	4,767	5,667	3,406	1,811	3,278	4,644	5,567	5,267	n/a
Mid-Atlantic	2,030	860	2,140	1,700	n/a	n/a	n/a	1,570	1,040	n/a
New York	3,850	1,650	2,400	n/a	n/a	n/a	4,400	2,625	1,750	n/a
Other	2,651	5,244	4,897	1,976	2,325	n/a	n/a	3,425	2,925	n/a
PNW	5,984	6,666	7,137	4,386	4,571	2,633	7,530	7,201	6,543	1,211
Southeast	1,165	2,535	4,545	2,406	2,545	1,600	1,980	3,223	2,609	n/a

Source: AMS Transportation Services Division analysis of AMS Specialty Crops Program Market News data.  
 Note: "n/a" indicates rates not available.

## U.S. Diesel Fuel Prices

The diesel fuel price provides a proxy for trends in U.S. truck rates. Diesel fuel is a significant component underlying truck rates.

**Figure 2: U.S. Average On-Highway Diesel Fuel Prices**



Source: AMS Transportation Services Division analysis of Energy Information Administration/U.S. Department of Energy data.



## AGRICULTURAL REFRIGERATED TRUCK QUARTERLY

Quarter 3, 2023

**Table 5: Average Diesel Fuel Prices (All Types)**

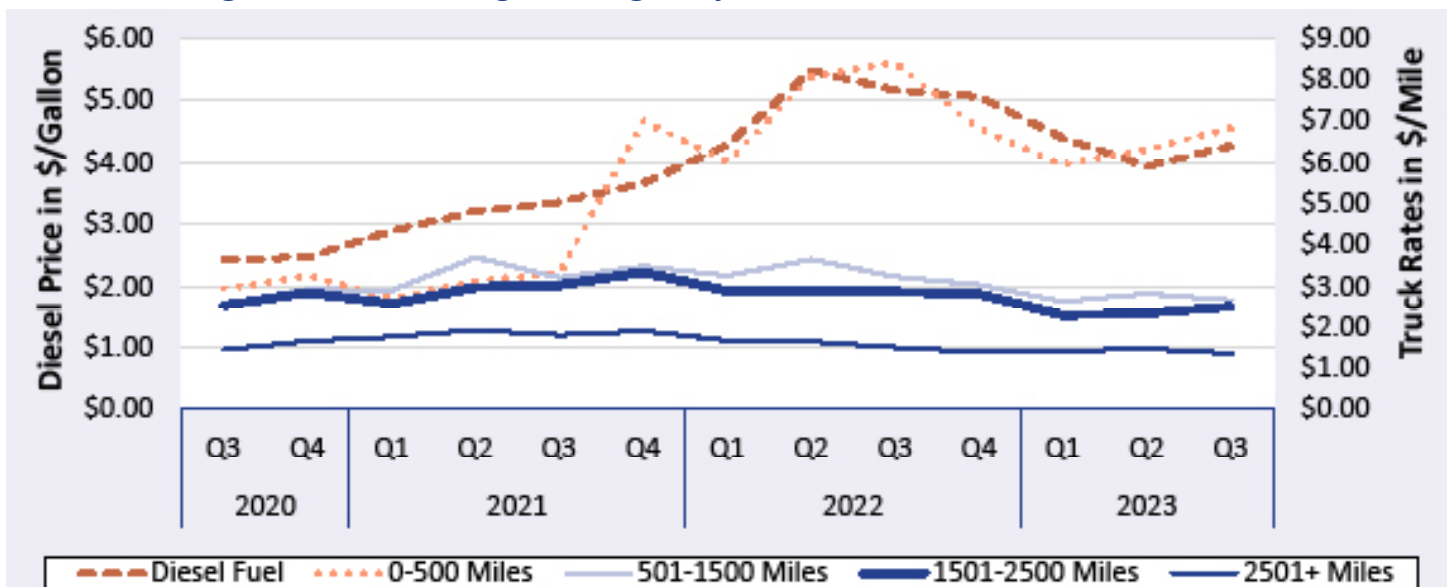
Region	3rd Quarter 2023 Price \$/Gallon	Change From Last Quarter	Change From Last Year
East Coast	4.28	7%	-17%
California	5.49	13%	-13%
New England	4.33	< 1%	-19%
Central Atlantic	4.45	4%	-18%
Lower Atlantic	4.21	9%	-16%
Gulf Coast	3.97	8%	-18%
Midwest	4.18	9%	-19%
Rocky Mountain	4.41	8%	-15%
West Coast Except California	4.71	9%	-13%
U.S.	4.27	8%	-17%

Source: AMS Transportation Services Division analysis of Energy Information Administration/U.S. Department of Energy data.  
 Note: Table values may not conform exactly due to rounding.

## Relationship Between Diesel Fuel and Truck Rates

The diesel fuel price provides a proxy for trends in U.S. truck rates. Diesel fuel is a significant expense for fruit and vegetable movements.

**Figure 3: U.S. Average On-Highway Diesel Fuel Prices and Truck Rates**



Sources: AMS Transportation Services Division analysis of AMS Specialty Crops Program Market News data and Energy Information Administration/U.S. Department of Energy data.

Note: The rates for 8 long-haul fruit and vegetable truck corridors are included in the national rates, weighted by origin volume.



## AGRICULTURAL REFRIGERATED TRUCK QUARTERLY

Quarter 3, 2023

**Table 6: Average Diesel Fuel Prices and Truck Rates**

Year	Quarter	Diesel Fuel (\$/gallon)	Truck Rates (\$/mile) 501-1500 miles	% Change From			
				Last Quarter		Last Year	
				Diesel	Truck	Diesel	Truck
<b>2020</b>	Q3	2.43	2.56	> -1%	2%	-20%	4%
	Q4	2.47	2.92	2%	14%	-19%	16%
<b>2021</b>	Q1	2.89	2.90	17%	-1%	> -1%	14%
	Q2	3.21	3.70	11%	27%	32%	47%
	Q3	3.36	3.21	5%	-13%	38%	25%
	Q4	3.66	3.48	9%	8%	48%	19%
<b>2022</b>	Q1	4.29	3.25	17%	-7%	48%	12%
	Q2	5.48	3.65	28%	12%	71%	-1%
	Q3	5.16	3.23	-6%	-12%	54%	1%
	Q4	5.06	3.03	-2%	-6%	38%	-13%
<b>2023</b>	Q1	4.40	2.63	-13%	-13%	3%	-19%
	Q2	3.94	2.82	-10%	7%	-28%	-23%
	Q3	4.27	2.66	8%	-6%	-17%	-18%

Sources: AMS Transportation Services Division analysis of AMS Specialty Crops Program Market News data and Energy Information Administration/U.S. Department of Energy data.

Note: Table values may not conform exactly due to rounding.



# AGRICULTURAL REFRIGERATED TRUCK QUARTERLY

Quarter 3, 2023

## Quarterly Truck Availability

**Table 7: U.S. Fresh Fruit and Vegetable Truck Availability**

Truck availability legend														
1=Surplus		2=Slight surplus			3=Adequate			4=Slight shortage			5=Shortage			
California, Central, And Western Arizona	Commodities	7/4	7/11	7/18	7/25	8/1	8/8	8/15	8/22	8/29	9/5	9/12	9/19	9/26
Imperial, Coachella Valleys Ca, Central And Western Az, Mexico Crossings Through Calexico And San Luis	Artichokes, Beets, Brussels Sprouts, Fresh Cut Cabbage, Green Onions, Green Peas, Radishes	3	3	3	3	3	3	2	2	3	2	2	2	3
Kern District California	Carrots, Grapes	3	3	3	3	3	3	2	2	3	2	2	2	3
Northern California Including San Joaquin Valley	Pears								3	3	3	3	3	3
Oxnard District California	Artichokes, Brussels Sprouts, Fresh Cut Cabbage, Celery, Cilantro, Kale Greens, Parsley, Radishes, Spinach	3	3	3	3	3	3	2	2	3	2	2	2	3
Salinas-Watsonville California	Anise, Artichokes, Beets, Bok Choy, Broccoli, Cabbage, Cauliflower, Celery, Chinese Cabbage, Cilantro, Escarole, Leeks, Boston Lettuce, Green Leaf Lettuce, Iceberg Lettuce, Red Leaf Lettuce, Romaine Lettuce, Parsley, Green Peas, Radishes, Spinach	3	3	3	3	3	3	2	2	3	2	2	2	3
San Joaquin Valley California	Grapes, Nectarines, Peaches, Plums					3	3	3	3	2	2	2	3	3
Santa Maria California	Anise, Beets, Bok Choy, Broccoli, Cabbage, Cauliflower, Celery, Chinese Cabbage, Cilantro, Endive, Escarole, Kale Greens, Boston Lettuce, Green Leaf Lettuce, Iceberg Lettuce, Red Leaf Lettuce, Romaine Lettuce, Parsley, Green Peas, Radishes, Spinach	3	3	3	3	3	3	2	2	3	2	2	2	3
South And Central District California	Grapefruit, Lemons, Oranges										3	3	3	3
South District California	Grapefruit, Lemons, Oranges	3	3	3	3	3	3	3	3	3				
Florida	Commodities	7/4	7/11	7/18	7/25	8/1	8/8	8/15	8/22	8/29	9/5	9/12	9/19	9/26
Florida West And South Carolina District	Cantaloupe, Tomatoes, Grape Tomatoes, Watermelons	4	4											

Source: AMS Transportation Services Division analysis of AMS Specialty Crops Program Market News data.

Note: Empty cells were not reported. District and availabilities data come from the weekly Specialty Crops Truck Rate reports:

[https://mymarketnews.ams.usda.gov/filerepo/reports?field\\_slug\\_id\\_value=2375](https://mymarketnews.ams.usda.gov/filerepo/reports?field_slug_id_value=2375).





# AGRICULTURAL REFRIGERATED TRUCK QUARTERLY

Quarter 3, 2023

**Table 7, continued: U.S. Fresh Fruit and Vegetable Truck Availability**

Truck availability legend														
1=Surplus	2=Slight surplus	3=Adequate	4=Slight shortage	5=Shortage										
Great Lakes (MI & WI)	Commodities	7/4	7/11	7/18	7/25	8/1	8/8	8/15	8/22	8/29	9/5	9/12	9/19	9/26
Central Wisconsin	Potatoes	3	3	3	3	3	3	3	3	3	3	3	3	3
U.S.-Mexico border	Commodities	7/4	7/11	7/18	7/25	8/1	8/8	8/15	8/22	8/29	9/5	9/12	9/19	9/26
Imperial, Coachella Valleys Ca, Central And Western Az, Mexico Crossings Through Calexico And San Luis	Artichokes, Beets, Brussels Sprouts, Fresh Cut Cabbage, Green Onions, Green Peas, Radishes	3	3	3	3	3	3	2	2	3	2	2	2	3
Nogales, Arizona	Mangos, Grape Tomatoes, Plum Tomatoes, Tomatoes, Cucumbers, Honeydews, Acorn Squash, Butternut Squash, Grey Squash, Kabocha Squash, Spaghetti Squash, Yellow Squash Straightneck, Zucchini Squash, Watermelons	3	3	3	3	3	3	3	3	3	3	3	3	3
South Texas	Asparagus, Broccoli, Carrots, Chayote, Cilantro, Cucumbers, Grapefruit, Limes, Mangos, Oranges, Papaya, Anaheim Peppers, Bell Peppers, Habanero Peppers, Jalapeno Peppers, Poblano Peppers, Serrano Peppers, Pineapples, Tomatillos, Tomatoes, Grape Tomatoes, Plum Tomatoes, Watermelons	1	1	1	1	1	1	1	1	1	1	1	1	1
Pacific Northwest (ID, OR, & WA)	Commodities	7/4	7/11	7/18	7/25	8/1	8/8	8/15	8/22	8/29	9/5	9/12	9/19	9/26
Columbia Basin Washington	Dry Onions, Potatoes	3	3	3	3	3	3	3	3	3	3	3	3	3
Idaho And Malheur County, Oregon	Dry Onions												3	3
Upper Valley, Twin Falls-Burley District Idaho	Potatoes	3	3	3	3	3	3	3	3	3	3	3	3	3
Yakima Valley And Wenatchee District, Washington	Apples, Blueberries, Peaches, Pears, Prunes, Rhubarb, Cherries, Apricots	3	3	3	3	3	3	1	2	2	3	3	2	2

Source: AMS Transportation Services Division analysis of AMS Specialty Crops Program Market News data.

Note: Empty cells were not reported. District and availabilities data come from the weekly Specialty Crops Truck Rate reports:

[https://mymarketnews.ams.usda.gov/filerepo/reports?field\\_slug\\_id\\_value=2375](https://mymarketnews.ams.usda.gov/filerepo/reports?field_slug_id_value=2375).



# AGRICULTURAL REFRIGERATED TRUCK QUARTERLY

Quarter 3, 2023

**Table 7, continued: U.S. Fresh Fruit and Vegetable Truck Availability**

Truck availability legend																	
1=Surplus		2=Slight surplus			3=Adequate			4=Slight shortage			5=Shortage						
Southeast (GA, SC, & NC)		Commodities			7/4	7/11	7/18	7/25	8/1	8/8	8/15	8/22	8/29	9/5	9/12	9/19	9/26
Florida West And South Carolina District		Cantaloupe, Tomatoes, Grape Tomatoes, Watermelons			4	4											
South Carolina		Watermelons				3	3	3									
South Georgia		Sweet Corn, Eggplant, Greens, Round Green Beans, Cantaloupe, Cucumbers, Bell Peppers, Other Peppers, Watermelons			3	3											
Vidalia District Georgia		Dry Onions			3	3	3	3	3								

Source: AMS Transportation Services Division analysis of AMS Specialty Crops Program Market News data.

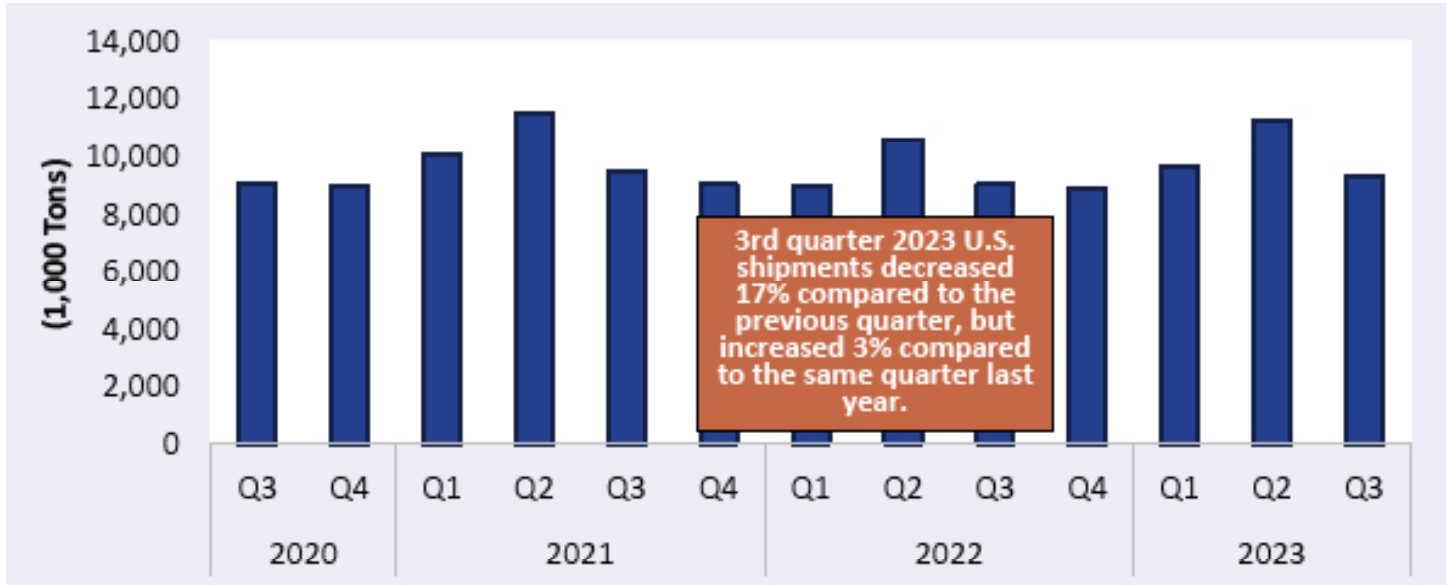
Note: Empty cells were not reported. District and availabilities data come from the weekly Specialty Crops Truck Rate reports:

[https://mymarketnews.ams.usda.gov/filerepo/reports?field\\_slug\\_id\\_value=2375](https://mymarketnews.ams.usda.gov/filerepo/reports?field_slug_id_value=2375).



## Reported U.S. Shipments

**Figure 4: Reported U.S. Fruit and Vegetable Shipments (1,000 Tons)**



Source: AMS Transportation Services Division analysis of AMS Specialty Crops Program Market News data.

**Table 8: Reported U.S. Fruit and Vegetable Shipments (1,000 Tons)**

Year	1st Quarter	2nd Quarter	3rd Quarter	4th Quarter	Annual
2023	9,685	11,265	9,332		30,282
2022	9,010	10,636	9,032	8,922	37,600
2021	10,051	11,520	9,498	9,034	40,103
2020	10,081	10,750	9,058	9,007	38,895
2019	9,381	10,246	8,687	8,714	37,028
2018	9,421	10,795	8,789	8,503	37,508
2017	8,072	9,642	8,479	8,267	34,459
2016	8,094	9,761	8,541	8,188	34,583
2015	8,118	9,630	8,324	7,771	33,842
2014	7,733	9,139	8,080	7,725	32,677
2013	7,451	8,972	7,762	7,527	31,712
2012	7,577	9,008	7,774	7,532	31,890
2011	7,007	8,981	7,887	7,988	31,863
2010	7,065	8,881	7,985	7,522	31,454
2009	7,158	8,728	7,990	7,270	31,147
2008	7,059	8,666	7,426	6,904	30,057
2007	6,959	8,585	7,475	7,099	30,118

Source: AMS Transportation Services Division analysis of AMS Specialty Crops Program Market News data.

Note: Table values may not conform exactly due to rounding.



## Reported Shipments by Selected Commodities

**Table 9: Reported Top 10 Commodity Shipments (1,000 Tons)**

Commodity	3rd Quarter 2023	Previous Quarter	Same Quarter Last Year	Current Quarter as % change from:	
				Previous Qtr	Same Qtr Last Year
Watermelons, Seedless	1,124	1,599	991	-30%	13%
Potatoes	1,048	1,128	1,020	-7%	3%
Apples	674	674	590	> -1%	14%
Onions Dry	548	748	543	-27%	1%
Grapes	370	393	408	-6%	-9%
Tomatoes	367	596	488	-38%	-25%
Strawberries	334	579	311	-42%	7%
Cucumbers	320	642	444	-50%	-28%
Lettuce, Iceberg	286	326	318	-12%	-10%
Avocados	267	703	467	-62%	-43%

Source: AMS Transportation Services Division analysis of AMS Specialty Crops Program Market News data.  
Note: Table values may not conform exactly due to rounding.

**Table 10: Reported Top 10 Regions (1,000 Tons)**

Origin	3rd Quarter 2023 Volume	% Change from Last Quarter	% Change From Same Quarter Last Year
California	3,074	2%	3%
Mexico	2,187	-43%	-1%
PNW	1,479	18%	7%
Canada	552	43%	-9%
Southeast	395	-23%	-1%
Great Lakes	343	109%	9%
Indiana	224	n/a	27%
Mid-Atlantic	191	1,037%	3%
Colorado	151	-30%	14%
Texas	129	-51%	-7%

Source: AMS Transportation Services Division analysis of AMS Specialty Crops Program Market News data.  
Note: Table values may not conform exactly due to rounding.

Note: Due to a lack of rate and availability data, Canada is excluded from the Regional Markets section of this report.



# REGIONAL MARKETS

## California

### Volume

Total reported shipments of fruit and vegetables from California in third quarter 2023 were 3.07 million tons—3 percent higher than third quarter 2022 (year to year). The summed volume of the top five commodities shipped from California increased 1 percent year to year. Two of the top five commodities saw year-to-year volume increases in the third quarter, including seedless watermelons (up 27 percent) and strawberries (up 8 percent). Shipments of grapes decreased 10 percent; shipments of romaine lettuce decreased 6 percent; and shipments of iceberg lettuce decreased 5 percent.

### Rates

The quarterly average truck rate for shipments between 501 miles and 1,500 miles was \$3.33 per mile—flat from second quarter 2023 to third quarter 2023 (quarter to quarter), and down 27 percent year to year.

### Truck Overview

Diesel fuel prices averaged \$5.49 per gallon—up 13 percent quarter to quarter, but down 13 percent year to year. The Kern, Oxnard, Salinas-Watsonville, and Santa Maria districts reported adequate truck availability in July and August, and a slight surplus of trucks in September. The Northern California and San Joaquin Valley districts did not report in July, and reported adequate truck availability in August and September. The South and Central district did not report in July or August, and reported adequate truck availability in September. The South district reported adequate truck availability in July and August, and did not report in September.

**Table 11: Reported Top Five Commodities Shipped from California (1,000 tons)**

Commodity	3rd Quarter 2023	Share of California Total	Previous Quarter	Same Quarter Last Year	Current Quarter as % change from:	
					Previous Qtr	Same Qtr Last Year
Grapes	345	11%	14	384	2,457%	-10%
Strawberries	327	11%	367	302	-11%	8%
Watermelons, Seedless	263	9%	20	207	1,206%	27%
Lettuce, Iceberg	259	8%	225	271	15%	-5%
Lettuce, Romaine	243	8%	236	259	3%	-6%
<b>Top 5 Total</b>	<b>1,438</b>	<b>47%</b>	<b>861</b>	<b>1,424</b>	<b>67%</b>	<b>1%</b>
<b>California Total</b>	<b>3,074</b>	<b>100%</b>	<b>3,015</b>	<b>2,977</b>	<b>2%</b>	<b>3%</b>

Source: AMS Transportation Services Division analysis of AMS Specialty Crops Program Market News data.

Any "-" in the table indicates no reported shipments during the quarter or a percentage change with an at- or near-zero denominator.

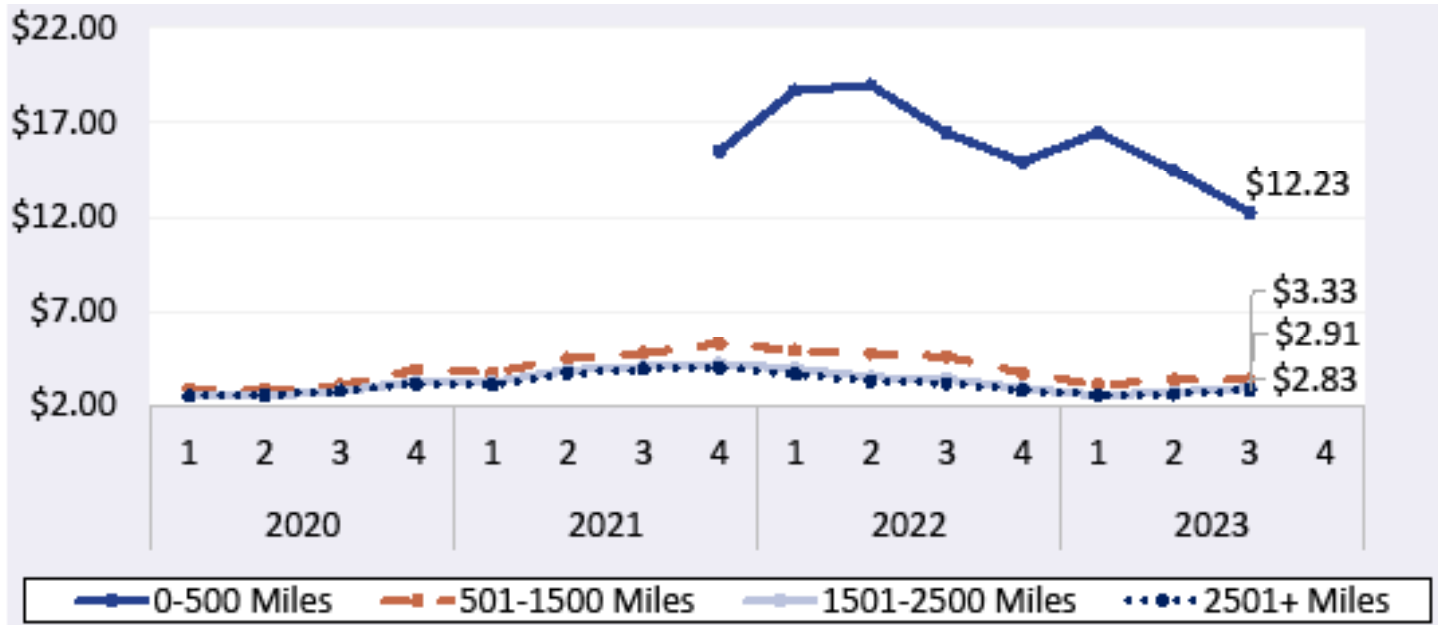
Note: Table values may not conform exactly due to rounding.



## AGRICULTURAL REFRIGERATED TRUCK QUARTERLY

Quarter 3, 2023

**Figure 5: California Truck Rates (\$/Mile by Distance Traveled)**



Source: AMS Transportation Services Division analysis of AMS Specialty Crops Program Market News data.  
Any gaps in the chart lines are the result of quarters with no reported data for the region.

**Table 12: California Truck Overview (Availability Rating: 1=Surplus to 5=Shortage)**

Region/Reporting District	July	August	September	3rd Quarter
Kern District California	3	2.6	2.25	2.62
Northern California Including San Joaquin Valley	-	3	3	3
Oxnard District California	3	2.6	2.25	2.62
Salinas-Watsonville California	3	2.6	2.24	2.61
San Joaquin Valley California	-	2.8	2.5	2.65
Santa Maria California	3	2.6	2.25	2.62
South And Central District California	-	-	3	3
South District California	3	3	-	3
Regional Average Availability	3	2.74	2.50	2.75
Diesel Fuel Price (\$/gallon)	4.91	5.52	6.04	5.49

Source: AMS Transportation Services Division analysis of AMS Specialty Crops Program Market News data.

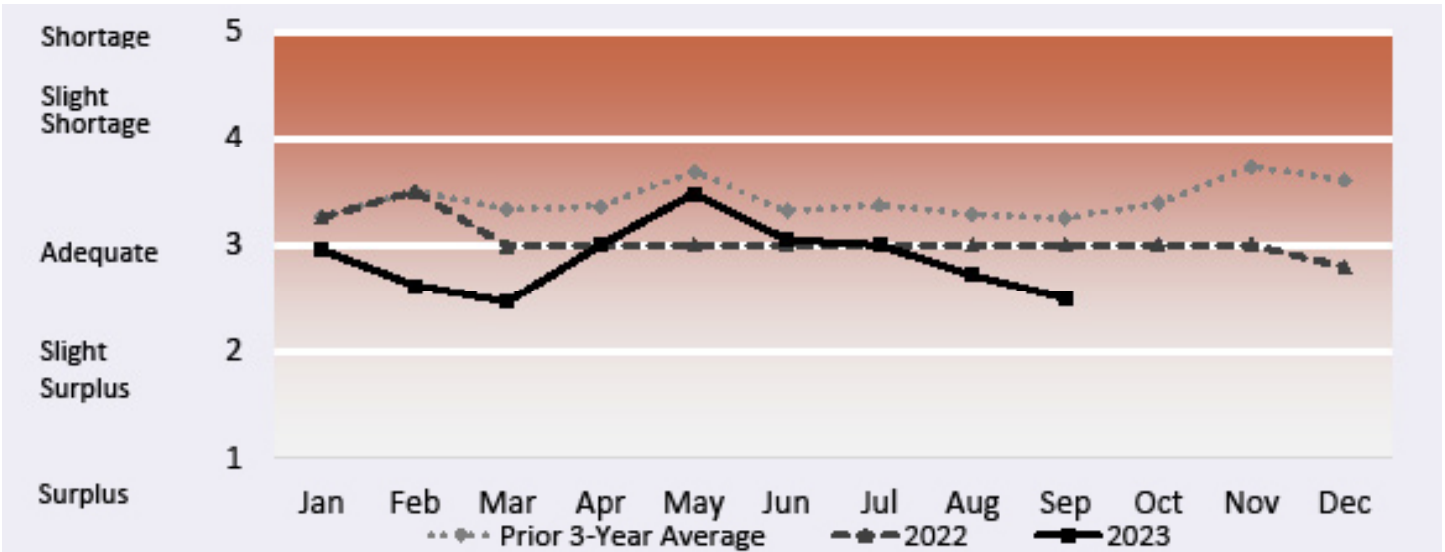
Any "-" in the table indicates no reported shipments during the quarter.

Note: Table values may not conform exactly due to rounding.

Note: AMS Specialty Crops Program defines regions by commodity, which may overlap in truck availability reporting.



**Figure 6: Refrigerated Truck Availability Monthly Ratings for California**



Source: AMS Transportation Services Division analysis of AMS Specialty Crops Program Market News data.  
Any gaps in the chart lines are the result of quarters with no reported data for the region.



## U.S. Mexico Border

### Volume

In third quarter 2023, USDA reported total shipments of fruit and vegetables from Mexico were 2.19 million tons—down 1 percent from third quarter 2022. The summed volume of the top five commodities shipped from the U.S. Mexico border also decreased 1 percent year to year. Three of the top five commodities saw year-to-year volume decreases, including plum tomatoes (down 9 percent); avocados (down 2 percent); and limes (down 1 percent). Shipments of cucumbers increased 9 percent, and shipments of mangoes increased 1 percent.

### Rates

In third quarter 2023, truck rates for shipments between 501 miles and 1,500 miles from Arizona-Mexico border crossings averaged \$2.75 per mile—down 6 percent quarter to quarter and down 4 percent year to year. Rates for shipments between 501 miles and 1,500 miles from Texas-Mexico border crossings averaged \$2.79 per mile—down 4 percent quarter to quarter and down 7 percent year to year.

### Truck Overview

Diesel fuel prices for border crossings from Arizona averaged \$4.71 per gallon—up 9 percent quarter to quarter, but down 13 percent year to year. Diesel fuel prices for border crossings from Texas averaged \$3.97—up 8 percent quarter to quarter, but down 18 percent year to year. Mexico crossings through Calexico and San Luis reported adequate truck availability in July and August, and a slight surplus of trucks in September. Mexico crossings through Nogales, AZ, reported adequate truck availability throughout the quarter. Mexico crossings through South Texas reported a surplus of trucks throughout the quarter.

**Table 13: Reported Top Five Commodities Shipped from Mexico (1,000 tons)**

Commodity	3rd Quarter 2023	Share of Mexico-Total	Previous Quarter	Same Quarter Last Year	Current Quarter as % change from:	
					Previous Qtr	Same Qtr Last Year
Avocados	211	10%	324	216	-35%	-2%
Tomatoes, Plum Type	208	10%	264	230	-21%	-9%
Limes	195	9%	186	197	5%	-1%
Mangoes	185	8%	193	184	-4%	1%
Cucumbers	167	8%	266	153	-37%	9%
<b>Top 5 Total</b>	<b>966</b>	<b>44%</b>	<b>1,233</b>	<b>979</b>	<b>-22%</b>	<b>-1%</b>
<b>Mexico Total</b>	<b>2,187</b>	<b>100%</b>	<b>3,842</b>	<b>2,207</b>	<b>-43%</b>	<b>-1%</b>

Source: AMS Transportation Services Division analysis of AMS Specialty Crops Program Market News data.

Any "-" in the table indicates no reported shipments during the quarter or a percentage change with an at- or near-zero denominator.

Note: Table values may not conform exactly due to rounding.





## AGRICULTURAL REFRIGERATED TRUCK QUARTERLY

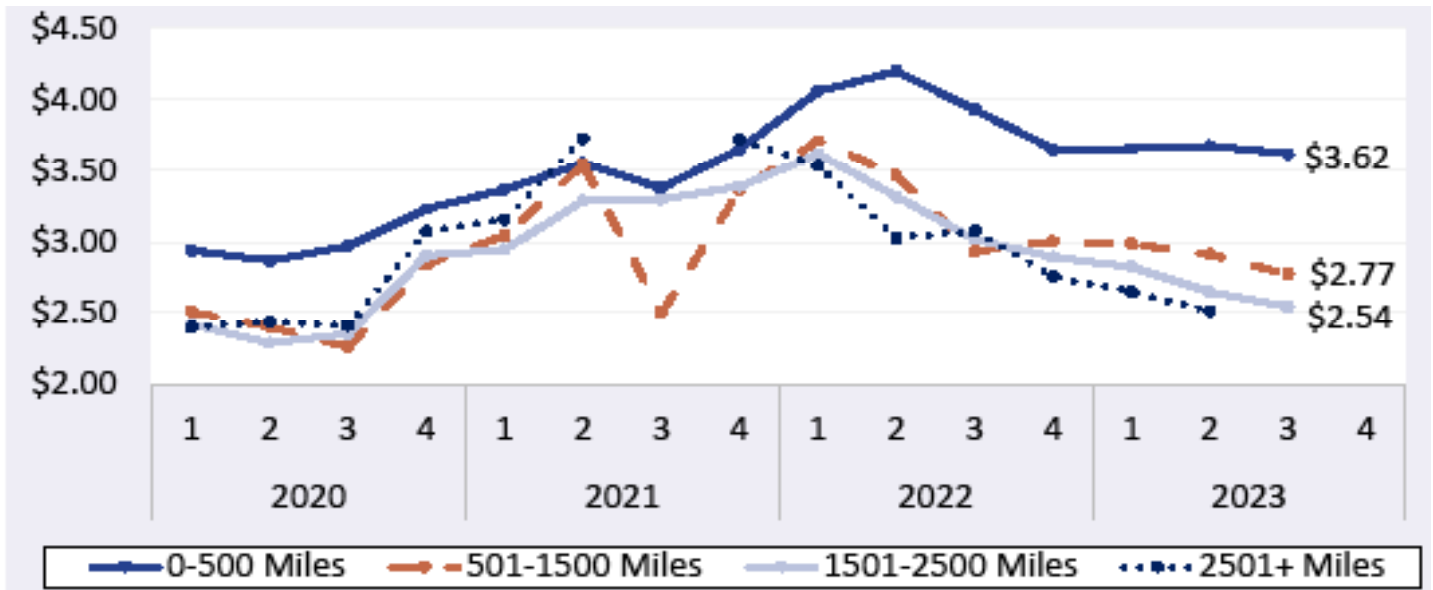
Quarter 3, 2023

**Table 14: Top 5 Commodities Shipped to U.S. from Mexico by State of Entry (1,000 tons)**

Texas		California		Arizona		New Mexico	
Commodity	3rd Quarter 2023	Commodity	3rd Quarter 2023	Commodity	3rd Quarter 2023	Commodity	3rd Quarter 2023
Avocados	205	Tomatoes, Plum Type	83	Mangoes	66	Peppers, Other	35
Limes	171	Cucumbers	71	Tomatoes	27	Onions Dry	2
Mangoes	117	Misc Tropical	41	Grapes	24	Misc Tropical	< 1
Tomatoes, Plum Type	117	Onions Green	39	Cucumbers	20	Tomatoes, Plum Type	< 1
Tomatoes	95	Peppers, Other	34	Peppers, Bell Type	12	Garlic	< 1
<b>Mexico through TX Total</b>	<b>1,416</b>	<b>Mexico through CA Total</b>	<b>492</b>	<b>Mexico through AZ Total</b>	<b>242</b>	<b>Mexico through NM Total</b>	<b>37</b>

Source: AMS Transportation Services Division analysis of AMS Specialty Crops Program Market News data.  
 Any "-" in the table indicates no reported shipments during the quarter.  
 Note: Table values may not conform exactly due to rounding.

**Figure 7: Truck Rates from U.S.-Mexico Border (\$/Mile by Distance Traveled)**



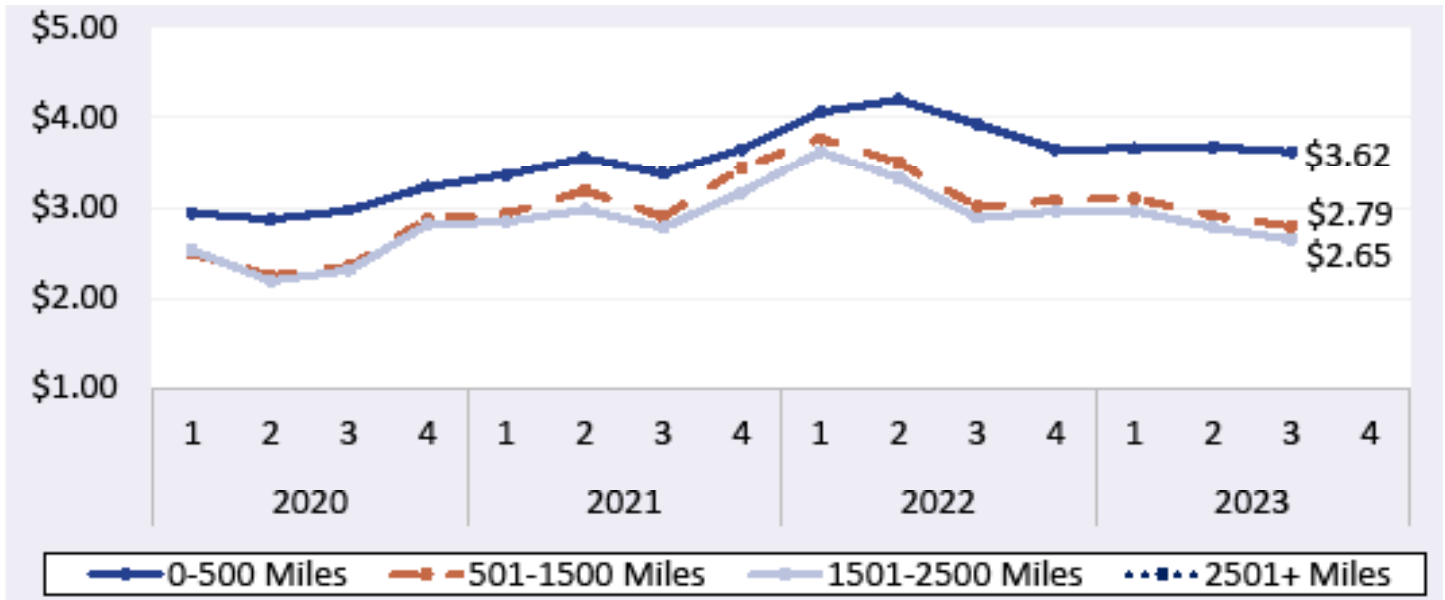
Source: AMS Transportation Services Division analysis of AMS Specialty Crops Program Market News data.  
 Any gaps in the chart lines are the result of quarters with no reported data for the region.



## AGRICULTURAL REFRIGERATED TRUCK QUARTERLY

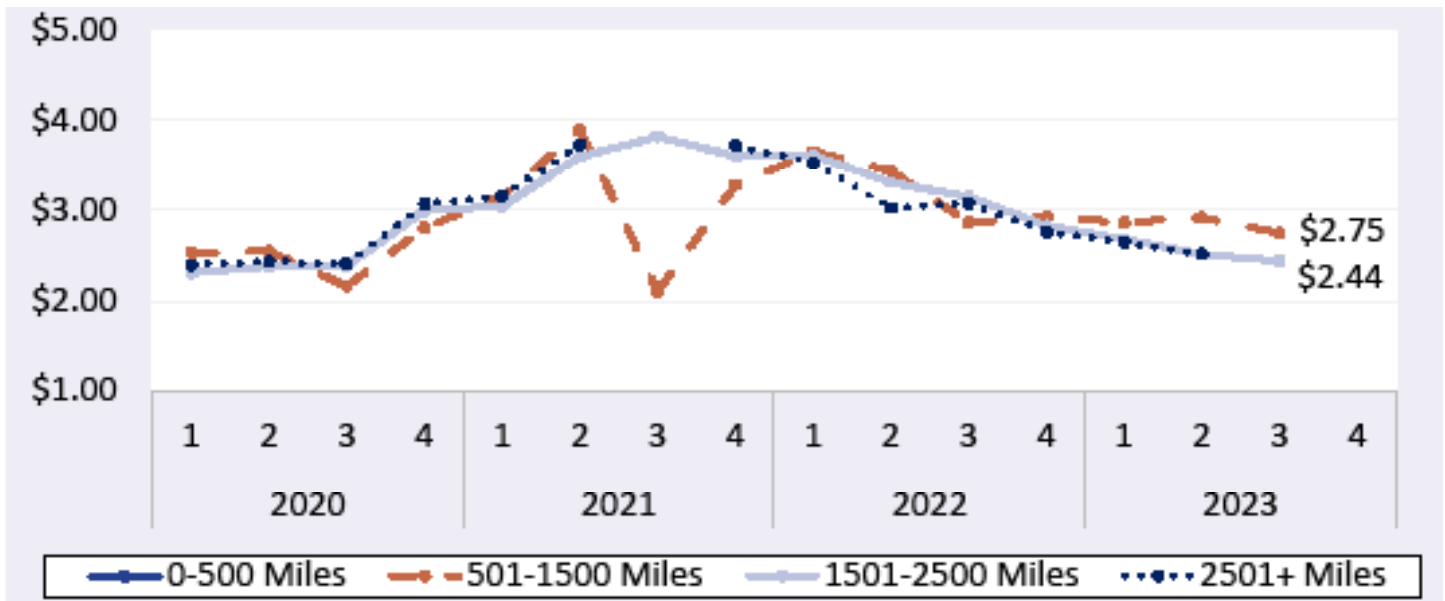
Quarter 3, 2023

**Figure 8: Texas Truck Rates from U.S.-Mexico Border (\$/Mile by Distance Traveled)**



Source: AMS Transportation Services Division analysis of AMS Specialty Crops Program Market News data. Any gaps in the chart lines are the result of quarters with no reported data for the region.

**Figure 9: Arizona Truck Rates from U.S.-Mexico Border (\$/Mile by Distance Traveled)**



Source: AMS Transportation Services Division analysis of AMS Specialty Crops Program Market News data. Any gaps in the chart lines are the result of quarters with no reported data for the region.



## AGRICULTURAL REFRIGERATED TRUCK QUARTERLY

Quarter 3, 2023

**Table 15: Truck Overview from the U.S.-Mexico Border**  
**(Availability Rating: 1=Surplus to 5=Shortage)**

Region/Reporting District	July	August	September	3rd Quarter
Imperial, Coachella Valleys Ca, Central And Western Az, Mexico Crossings Through Calexico And San Luis	3	2.6	2.25	2.62
Mexico Crossings Through Nogales, Arizona	3	3	3	3
Mexico Crossings Through South Texas	1	1	1	1
<b>Regional Average Availability</b>	2.33	2.2	2.08	2.21
<b>Diesel Fuel Price (\$/gallon), through Texas</b>	<b>3.59</b>	<b>4.08</b>	<b>4.25</b>	<b>3.97</b>
<b>Diesel Fuel Price (\$/gallon), through Arizona</b>	<b>4.20</b>	<b>4.75</b>	<b>5.17</b>	<b>4.71</b>

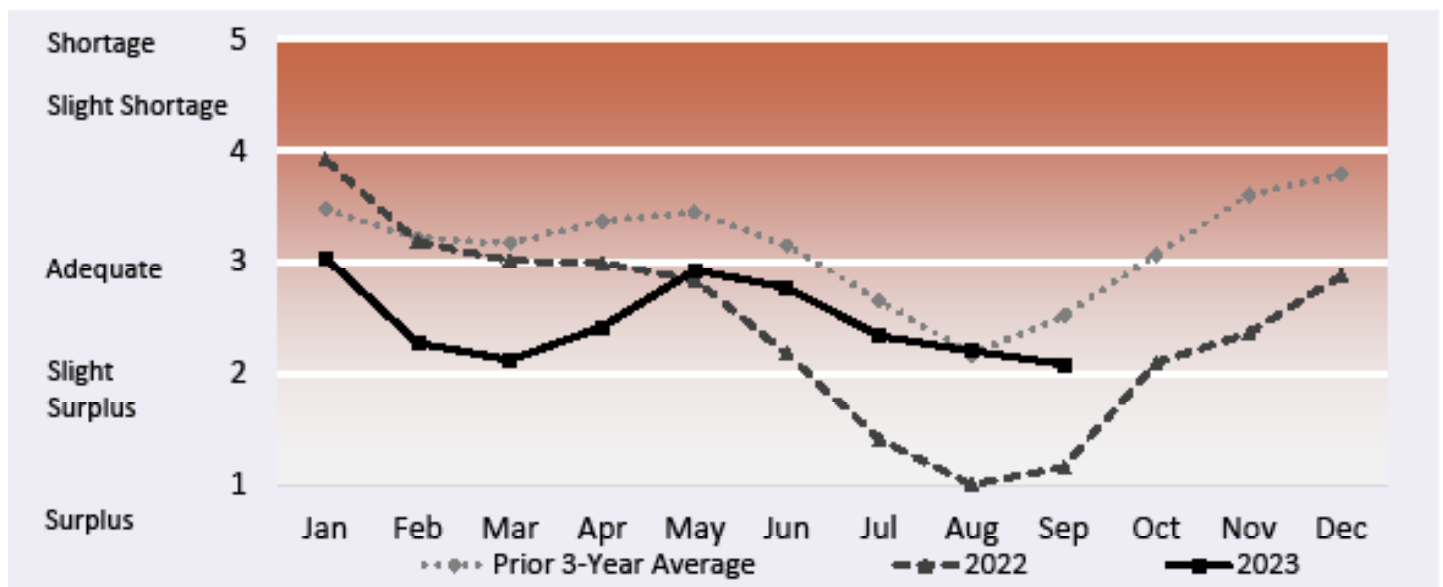
Source: AMS Transportation Services Division analysis of AMS Specialty Crops Program Market News data.

Any "-" in the table indicates no reported shipments during the quarter.

Note: Table values may not conform exactly due to rounding.

Note: AMS Specialty Crops Program defines regions by commodity, which may overlap in truck availability reporting.

**Figure 10: Refrigerated Truck Availability Monthly Ratings from the U.S-Mexico Border**



Source: AMS Transportation Services Division analysis of AMS Specialty Crops Program Market News data.

Any gaps in the chart lines are the result of quarters with no reported data for the region.



# AGRICULTURAL REFRIGERATED TRUCK QUARTERLY

Quarter 3, 2023

## PNW

### Volume

In third quarter 2023, total reported shipments of fruit and vegetables from PNW were 1.48 million tons, up 7 percent year to year. The summed volume of the top five commodities shipped from PNW increased 8 percent year to year. All of the top five commodities saw year-to-year volume increases, including pears (up 44 percent); dry onions (up 14 percent); apples (up 8 percent); potatoes (up 5 percent); and cherries (up 3 percent).

### Rates

The quarterly average truck rate for shipments between 501 miles and 1,500 miles was \$2.52 per mile—up 1 percent quarter to quarter, but down 4 percent year to year.

### Truck Overview

Diesel fuel prices averaged \$4.71 per gallon—up 9 percent quarter to quarter, but down 13 percent year to year. The Columbia Basin and Twin Falls-Burley districts reported adequate truck availability throughout the quarter. The Idaho and Malheur County district did not report in July or August, and reported adequate truck availability in September. The Yakima Valley and Wenatchee district reported adequate availability in July and September, and a slight surplus of trucks in August.

**Table 16: Reported Top Five Commodities Shipped from PNW (1,000 tons)**

Commodity	3rd Quarter 2023	Share of PNW Total	Previous Quarter	Same Quarter Last Year	Current Quarter as % change from:	
					Previous Qtr	Same Qtr Last Year
<b>Apples</b>	581	39%	571	540	2%	8%
<b>Potatoes</b>	452	31%	413	430	9%	5%
<b>Onions Dry</b>	252	17%	150	222	69%	14%
<b>Cherries</b>	104	7%	49	101	113%	3%
<b>Pears</b>	49	3%	69	34	-29%	44%
<b>Top 5 Total</b>	<b>1,438</b>	<b>97%</b>	<b>1,252</b>	<b>1,327</b>	<b>15%</b>	<b>8%</b>
<b>PNW Total</b>	<b>1,479</b>	<b>100%</b>	<b>1,255</b>	<b>1,377</b>	<b>18%</b>	<b>7%</b>

Source: AMS Transportation Services Division analysis of AMS Specialty Crops Program Market News data.

Any "-" in the table indicates no reported shipments during the quarter or a percentage change with an at- or near-zero denominator.

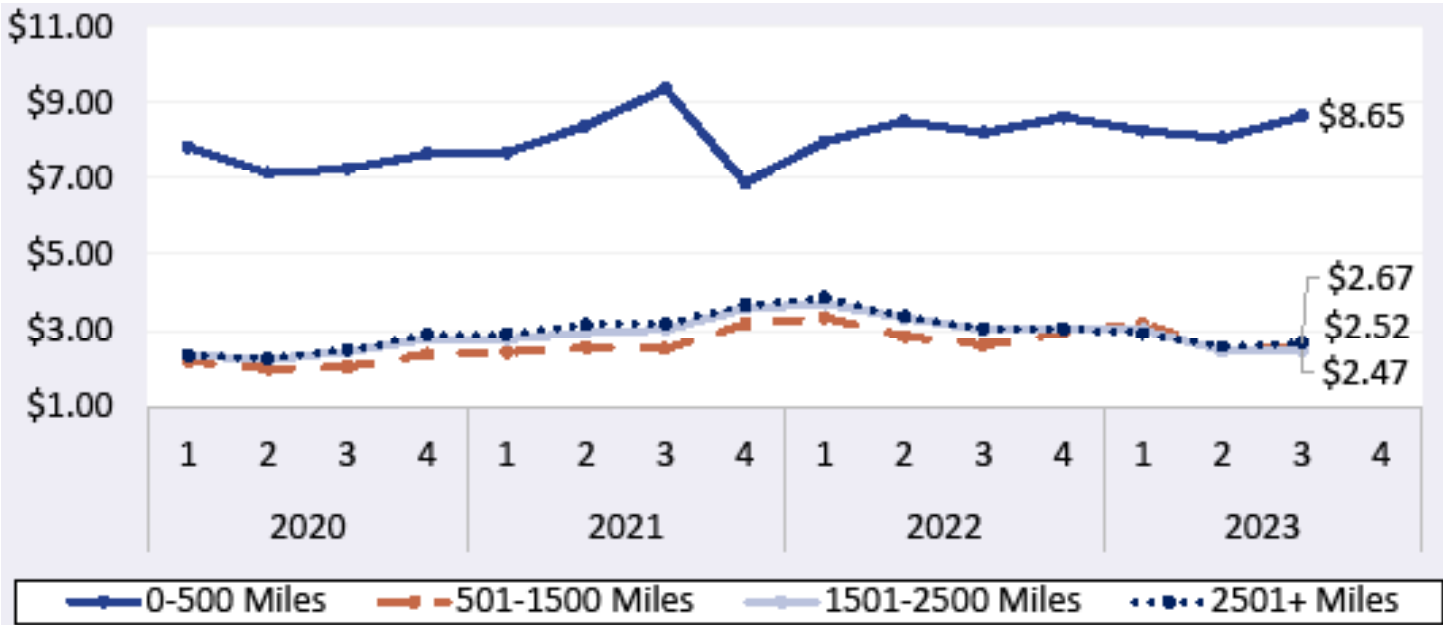
Note: Table values may not conform exactly due to rounding.



## AGRICULTURAL REFRIGERATED TRUCK QUARTERLY

Quarter 3, 2023

**Figure 11: PNW Truck Rates (\$/Mile by Distance Traveled)**



Source: AMS Transportation Services Division analysis of AMS Specialty Crops Program Market News data.  
 Any gaps in the chart lines are the result of quarters with no reported data for the region.

**Table 17: PNW Truck Overview (Availability Rating: 1=Surplus to 5=Shortage)**

Region/Reporting District	July	August	September	3rd Quarter
Columbia Basin Washington	3	3	3	3
Idaho And Malheur County, Oregon	-	-	3	3
Upper Valley, Twin Falls-Burley District Idaho	3	3	3	3
Yakima Valley And Wenatchee District, Washington	3	2.2	2.5	2.57
<b>Regional Average Availability</b>	3	2.73	2.88	2.87
<b>Diesel Fuel Price (\$/gallon)</b>	<b>4.20</b>	<b>4.75</b>	<b>5.17</b>	<b>4.71</b>

Source: AMS Transportation Services Division analysis of AMS Specialty Crops Program Market News data.

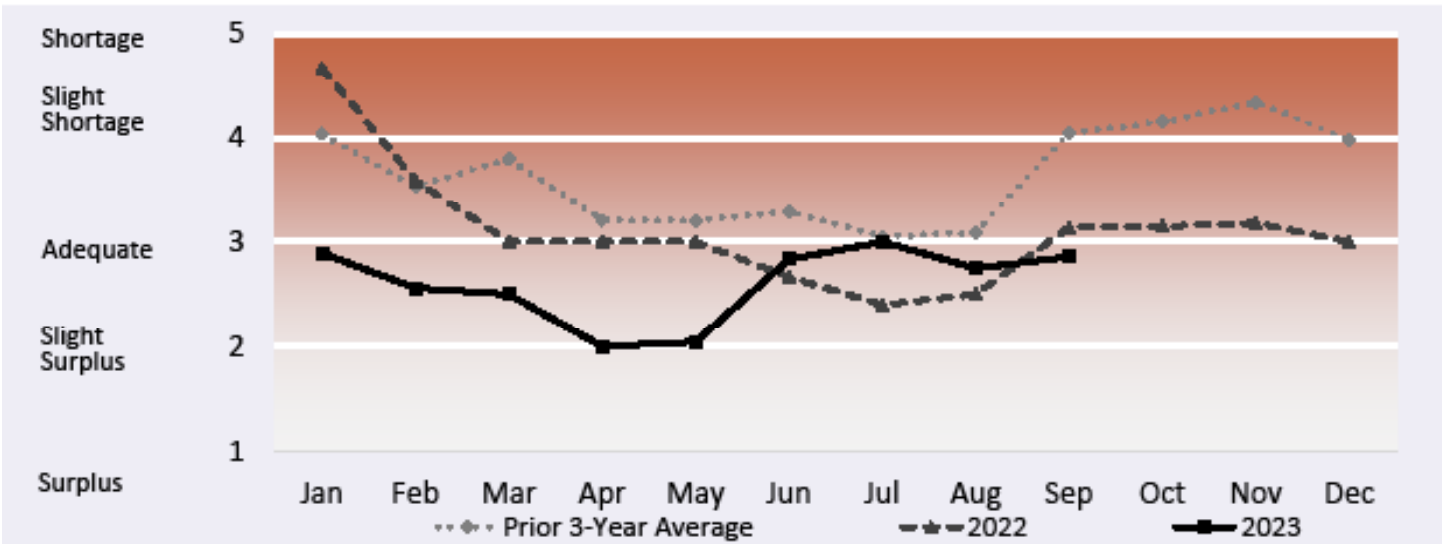
Any "-" in the table indicates no reported shipments during the quarter.

Note: Table values may not conform exactly due to rounding.

Note: AMS Specialty Crops Program defines regions by commodity, which may overlap in truck availability reporting.



Figure 12: Refrigerated Truck Availability Monthly Ratings for PNW



Source: AMS Transportation Services Division analysis of AMS Specialty Crops Program Market News data.  
 Any gaps in the chart lines are the result of quarters with no reported data for the region.



## Southeast

### Volume

During third quarter 2023, total reported shipments of fruit and vegetables from Southeast were 395,000 tons—down 1 percent from third quarter 2022. The summed volume of the top five commodities shipped from Southeast also decreased 1 percent year to year. Three of the top five commodities saw year-to-year volume decreases in the third quarter, including sweet potatoes (down 43 percent); dry onions (down 43 percent); and bell peppers (down 33 percent). Shipments of seeded watermelons increased 32 percent, and shipments of seedless watermelons increased 17 percent.

### Rates

The quarterly average truck rate for shipments between 501 miles and 1,500 miles was \$3.77 per mile—down 1 percent quarter to quarter and down 41 percent year to year.

### Truck Overview

Diesel fuel prices averaged \$4.21 per gallon—up 9 percent quarter to quarter, but down 16 percent year to year. The Florida West and South Carolina district reported a slight shortage of trucks in July, and did not report in August or September. The South Carolina and South Georgia districts reported adequate truck availability in July, and did not report in August or September. The Vidalia district reported adequate truck availability in July and August, and did not report in September.

**Table 18: Reported Top Five Commodities Shipped from Southeast (1,000 tons)**

Commodity	3rd Quarter 2023	Share of Southeast Total	Previous Quarter	Same Quarter Last Year	Current Quarter as % change from:	
					Previous Qtr	Same Qtr Last Year
Watermelons, Seedless	257	65%	203	219	26%	17%
Sweet Potatoes	30	8%	28	53	7%	-43%
Onions Dry	25	6%	70	44	-64%	-43%
Watermelons, Seeded	12	3%	18	9	-32%	32%
Peppers, Bell Type	9	2%	15	13	-41%	-33%
<b>Top 5 Total</b>	<b>334</b>	<b>85%</b>	<b>335</b>	<b>339</b>	<b>&gt; -1%</b>	<b>-1%</b>
<b>Southeast Total</b>	<b>395</b>	<b>100%</b>	<b>510</b>	<b>401</b>	<b>-23%</b>	<b>-1%</b>

Source: AMS Transportation Services Division analysis of AMS Specialty Crops Program Market News data.

Any "-" in the table indicates no reported shipments during the quarter or a percentage change with an at- or near-zero denominator.

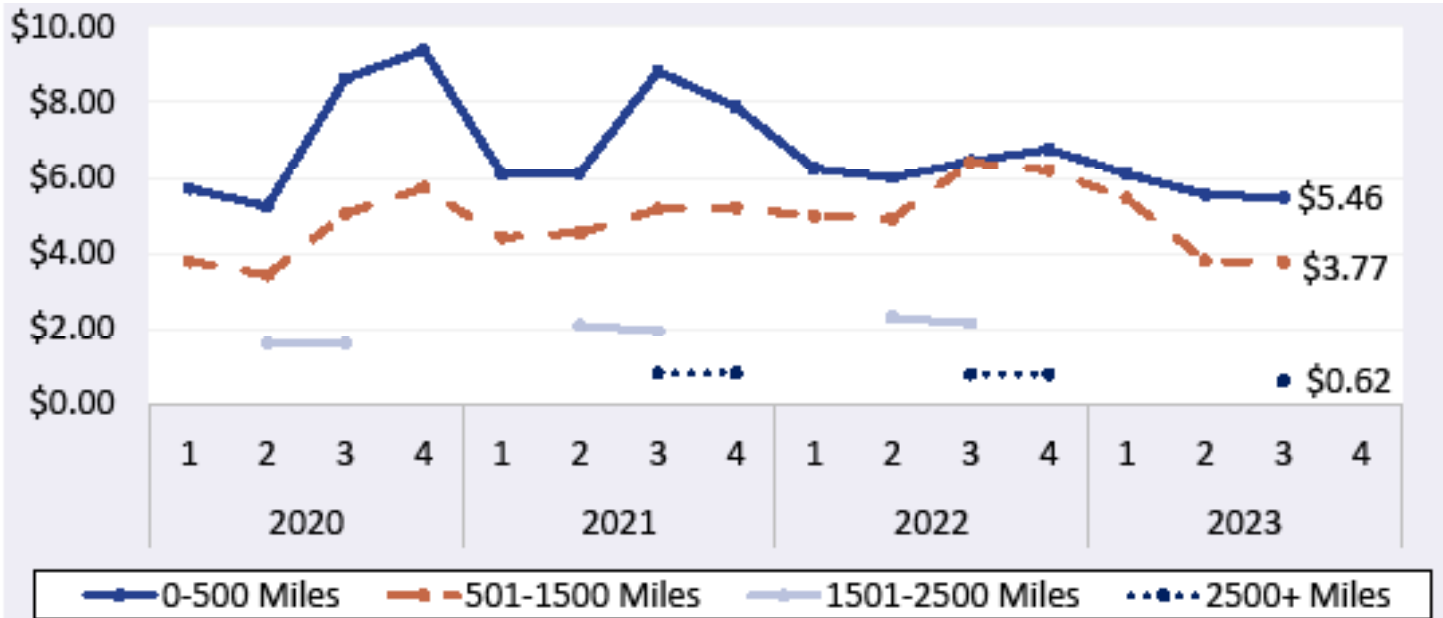
Note: Table values may not conform exactly due to rounding.



## AGRICULTURAL REFRIGERATED TRUCK QUARTERLY

Quarter 3, 2023

**Figure 13: Southeast Truck Rates (\$/Mile by Distance Traveled)**



Source: AMS Transportation Services Division analysis of AMS Specialty Crops Program Market News data.  
Any gaps in the chart lines are the result of quarters with no reported data for the region.

**Table 19: Southeast Truck Overview (Availability Rating: 1=Surplus to 5=Shortage)**

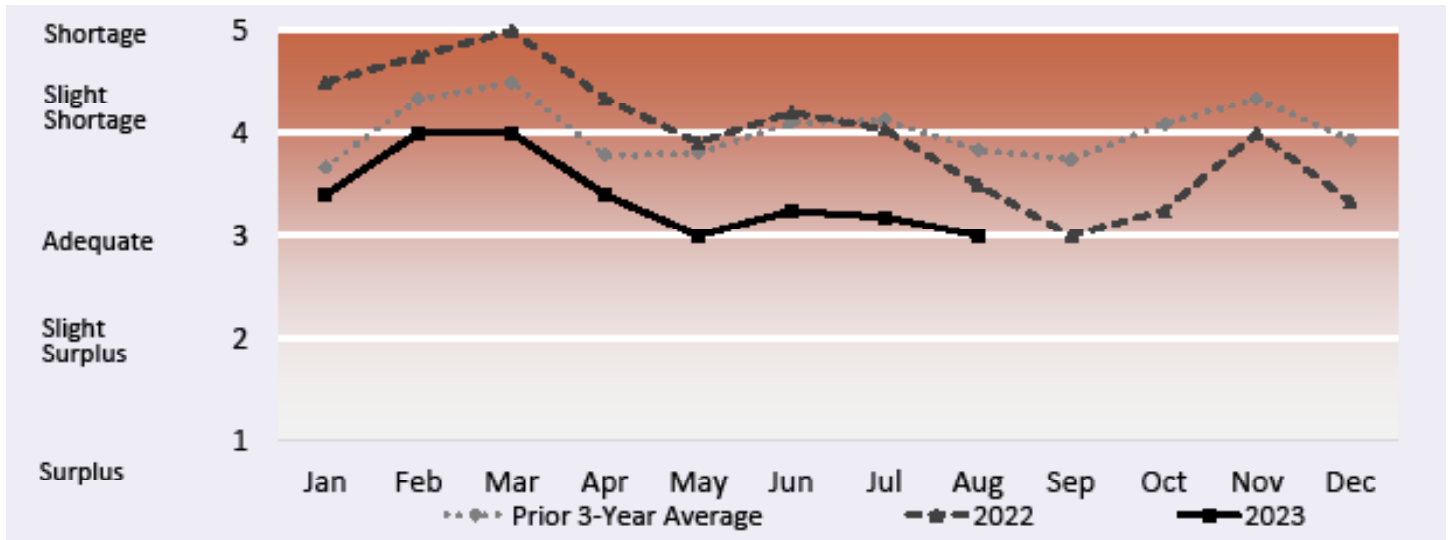
Region/Reporting District	July	August	September	3rd Quarter
<b>Florida West And South Carolina District</b>	4	-	-	4
South Carolina	3	-	-	3
South Georgia	3	-	-	3
Vidalia District Georgia	3	3	-	3
<b>Regional Average Availability</b>	3.25	3	-	3.13
<b>Diesel Fuel Price (\$/gallon)</b>	3.84	4.34	4.43	4.21

Source: AMS Transportation Services Division analysis of AMS Specialty Crops Program Market News data.  
Any "-" in the table indicates no reported shipments during the quarter.  
Note: Table values may not conform exactly due to rounding.  
Note: AMS Specialty Crops Program defines regions by commodity, which may overlap in truck availability reporting.





Figure 14: Refrigerated Truck Availability Monthly Ratings for Southeast



Source: AMS Transportation Services Division analysis of AMS Specialty Crops Program Market News data.  
Any gaps in the chart lines are the result of quarters with no reported data for the region.



## Great Lakes

### Volume

Total reported shipments of fruit and vegetables from Great Lakes in third quarter 2023 were 343,000 tons, up 9 percent year to year. The summed volume of the top five commodities shipped from Great Lakes increased 16 percent year to year. Three of the top five commodities saw year-to-year volume increases in the third quarter, including apples (up 297 percent); bell peppers (up 17 percent); and potatoes (up 11 percent). Shipments of cucumbers decreased 11 percent, and shipments of seedless watermelons decreased 5 percent.

### Rates

The quarterly average truck rate for shipments between 501 miles and 1,500 miles was \$4.25 per mile—up 1 percent quarter to quarter, but down 11 percent year to year.

### Truck Overview

Diesel fuel prices averaged \$4.18 per gallon—up 9 percent quarter to quarter, but down 19 percent year to year. The Big Lake and Central Minnesota district did not report in July, and reported adequate truck availability in August and September. The Central Wisconsin district reported adequate truck availability throughout the quarter.

**Table 20: Reported Top Five Commodities Shipped from Great Lakes (1,000 tons)**

Commodity	3rd Quarter 2023	Share of Great Lakes Total	Previous Quarter	Same Quarter Last Year	Current Quarter as % change from:	
					Previous Qtr	Same Qtr Last Year
Potatoes	145	42%	110	131	32%	11%
Watermelons, Seedless	52	15%	-	55	-	-5%
Apples	35	10%	35	9	-2%	297%
Peppers, Bell Type	23	7%	-	19	-	17%
Cucumbers	21	6%	< 1	24	-	-11%
<b>Top 5 Total</b>	<b>276</b>	<b>80%</b>	<b>145</b>	<b>238</b>	<b>90%</b>	<b>16%</b>
<b>Great Lakes Total</b>	<b>343</b>	<b>100%</b>	<b>164</b>	<b>315</b>	<b>109%</b>	<b>9%</b>

Source: AMS Transportation Services Division analysis of AMS Specialty Crops Program Market News data.

Any "-" in the table indicates no reported shipments during the quarter or a percentage change with an at- or near-zero denominator.

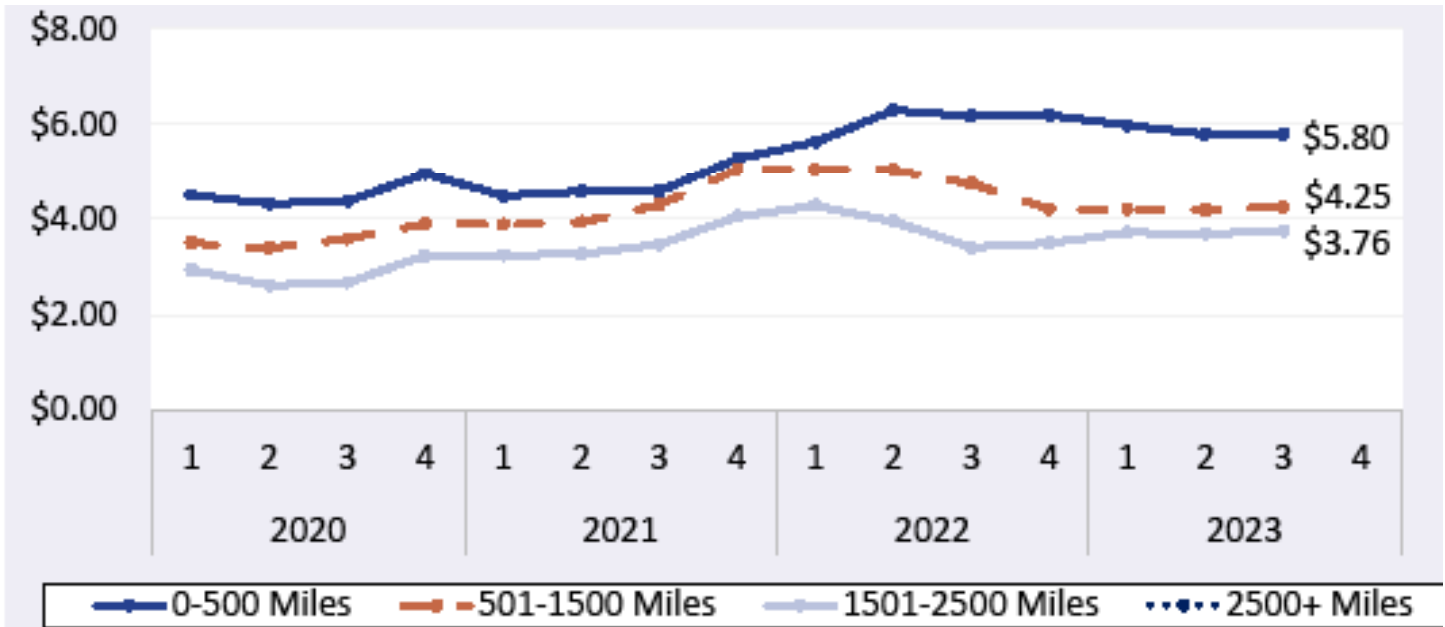
Note: Table values may not conform exactly due to rounding.



## AGRICULTURAL REFRIGERATED TRUCK QUARTERLY

Quarter 3, 2023

**Figure 15: Great Lakes Truck Rates (\$/Mile by Distance Traveled)**



Source: AMS Transportation Services Division analysis of AMS Specialty Crops Program Market News data.  
Any gaps in the chart lines are the result of quarters with no reported data for the region.

**Table 21: Great Lakes Truck Overview (Availability Rating: 1=Surplus to 5=Shortage)**

Region/Reporting District	July	August	September	3rd Quarter
Big Lake And Central Minnesota	-	3	3	3
Central Wisconsin	3	3	3	3
<b>Regional Average Availability</b>	3	3	3	3
<b>Diesel Fuel Price (\$/gallon)</b>	<b>3.82</b>	<b>4.3</b>	<b>4.44</b>	<b>4.18</b>

Source: AMS Transportation Services Division analysis of AMS Specialty Crops Program Market News data.

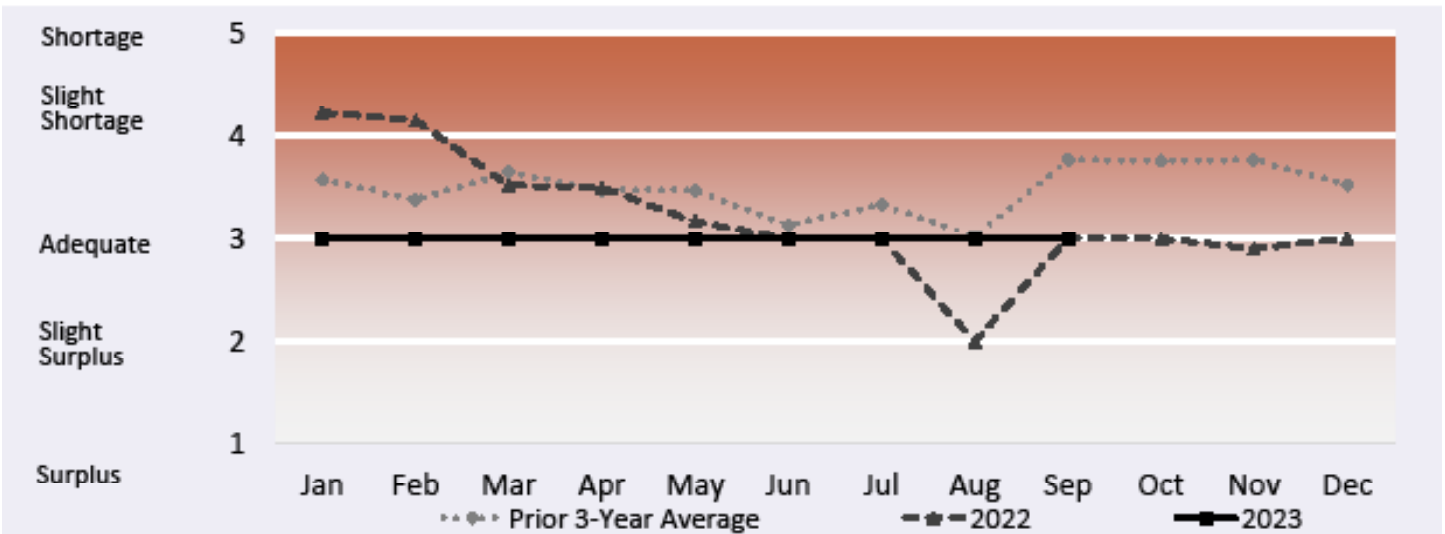
Any "-" in the table indicates no reported shipments during the quarter.

Note: Table values may not conform exactly due to rounding.

Note: AMS Specialty Crops Program defines regions by commodity, which may overlap in truck availability reporting.



Figure 16: Refrigerated Truck Availability Monthly Ratings for Great Lakes



Source: AMS Transportation Services Division analysis of AMS Specialty Crops Program Market News data.  
 Any gaps in the chart lines are the result of quarters with no reported data for the region.



# ADDITIONAL INFORMATION

## Terms and References

### Data Reporting and Publication Window

The publication date of each Agricultural Refrigerated Truck Quarterly (AgRTQ) depends on the timing of data reporting. Reporting of truck shipments in some regions can be delayed 2-3 months past their respective quarter. We publish the AgRTQ one month after that lag in order to capture a more complete picture of truck shipments during the quarter.

### Data Sources

This information is compiled from the weekly Specialty Crops Truck Rate Report by USDA, Agricultural Marketing Service (AMS), Specialty Crops Program, Market News Division. The website is:

<https://www.marketnews.usda.gov/mnp/fv-home>.

### Regional Markets

For the regional markets, some States are grouped into producing regions. The Pacific Northwest region includes Idaho, Oregon, and Washington. The Great Lakes region includes Michigan, Minnesota, and Wisconsin. The Southeast region includes North Carolina, South Carolina and Georgia.

### Shipment Volumes

Truck shipments for all commodities and origins are not available. Those obtainable are reported, but should not be interpreted as representing complete movements of a commodity. Truck shipments from all States are collected at shipping points and include both interstate and intrastate movements. They are obtained from various sources, including Federal marketing orders, administrative committees, Federal State Inspection Service, and shippers. Volume amounts are represented in 10,000 pound units, or 1,000 10-lb packages but are converted to 1,000 tons for this report. Mexican border crossings through Arizona and Texas data is obtained from the Department of Homeland Security (DHS), U.S. Customs and Border and Protection (CBP) through USDA, AMS, Market News.

### Rates

This information is compiled from the weekly Specialty Crops Truck Rate Report. Rates quoted represent open (spot) market rates that shippers or receivers pay depending on basis of sale, per load, including truck brokers fees for shipments in truck load volume to a single destination. Extra charges for delivery to terminal markets, multipickup and multidrop shipments are not included unless otherwise stated. Rates are based on the most usual loads in 48-53 foot trailers from the origin shipping area to the destination receiving city. In areas where rates are based on package rates, per load rates were derived by multiplying the package rate by the number of packages in the most usual load in a 48-53 foot trailer. Slightly cheaper rates will be reported during Quarters 2 and 3 as about 50 percent of onion shipments from California are hauled on open flatbed trailers. During Quarter 3, less than 20 percent of onions hauled from Washington, Idaho, and Oregon are on open flatbeds.

### Regional Rates

Rate data for 10 destination markets are used to calculate average origin regional rates.

### National Rates

The national rates reflect the average of the regional rates, separated by mileage category and weighted by volume between origin and destination.



## Contact Us

### Authors

**Alexis Heyman**, Coordinator; Analyst

[Alexis.Heyman@usda.gov](mailto:Alexis.Heyman@usda.gov), 847.699.2414

**Jesse Gastelle**, Analyst

[Jesse.Gastelle@usda.gov](mailto:Jesse.Gastelle@usda.gov), 202.690.1144

**Kranti Mulik**, Analyst

[Kranti.Mulik@usda.gov](mailto:Kranti.Mulik@usda.gov), 202.756.2577

**Patty Willkie**, Specialty Crops Program and Market News Division Data

[Patty.Willkie@usda.gov](mailto:Patty.Willkie@usda.gov), 202.720.2175

Please sign up by entering your email address at the following link and selecting your preference to receive Transportation Research and Analysis:

[https://public.govdelivery.com/accounts/USDAAMS/subscriber/new?topic\\_id=USDAAMS\\_177](https://public.govdelivery.com/accounts/USDAAMS/subscriber/new?topic_id=USDAAMS_177)

For assistance with accessibility issues related to this document, please e-mail [SharonC.Williams@usda.gov](mailto:SharonC.Williams@usda.gov).

### Related Websites

USDA's Agricultural Transportation Open Data Platform

<https://agtransport.usda.gov/>

Specialty Crops Program

<https://www.ams.usda.gov/about-ams/programs-offices/specialty-crops-program>

Specialty Crops Truck Rate Report

[https://mymarketnews.ams.usda.gov/filerepo/reports?field\\_slug\\_id\\_value=2375](https://mymarketnews.ams.usda.gov/filerepo/reports?field_slug_id_value=2375)

Specialty Crops Movement Reporting

<https://www.marketnews.usda.gov/mnp/fv-report-config-step1?type=movement>

Economic Research Service Vegetable and Pulses

<https://www.ers.usda.gov/topics/crops/vegetables-pulses/>

Economic Research Service Fruit and Tree Nuts

<https://www.ers.usda.gov/topics/crops/fruit-tree-nuts.aspx>

National Agricultural Statistics Service, Crops

[https://www.nass.usda.gov/Statistics\\_by\\_Subject/index.php?sector=CROPS](https://www.nass.usda.gov/Statistics_by_Subject/index.php?sector=CROPS)

Refrigerated Truck Quarterly Datasets

<https://www.ams.usda.gov/services/transportation-analysis/agricultural-refrigerated-truck-quarterly-datasets>

Protecting Perishable Foods During Transport by Truck and Rail

<https://edis.ifas.ufl.edu/pdf/HS/HS132800.pdf>

### Preferred Citation

U.S. Department of Agriculture, Agricultural Marketing Service. *Agricultural Refrigerated Truck Quarterly Report*. March 2024 Web. <<https://dx.doi.org/10.9752/TS051.03-2024>>

### Photo Credit

Burt Barnes

USDA is an equal opportunity provider, employer, and lender.

[www.ams.usda.gov/services/transportation-analysis/agrtq](https://www.ams.usda.gov/services/transportation-analysis/agrtq)