

**THE VISUAL AIDS ON THE FOLLOWING
PAGES ARE FOR REFERENCE ONLY AND
NOT INTENDED FOR OFFICIAL USE.**

**TO PURCHASE OFFICIAL VISUAL AIDS PLEASE CONTACT
THE SPECIALTY CROPS INSPECTION DIVISION'S
EQUIPMENT AND FORMS DEPOT**

**USDA, AMS, FVP, SCI
831 MITTEN ROAD, ROOM 200
BURLINGAME, CA 94010
PHONE: 650-552-9073
FAX: 650-552-9147**

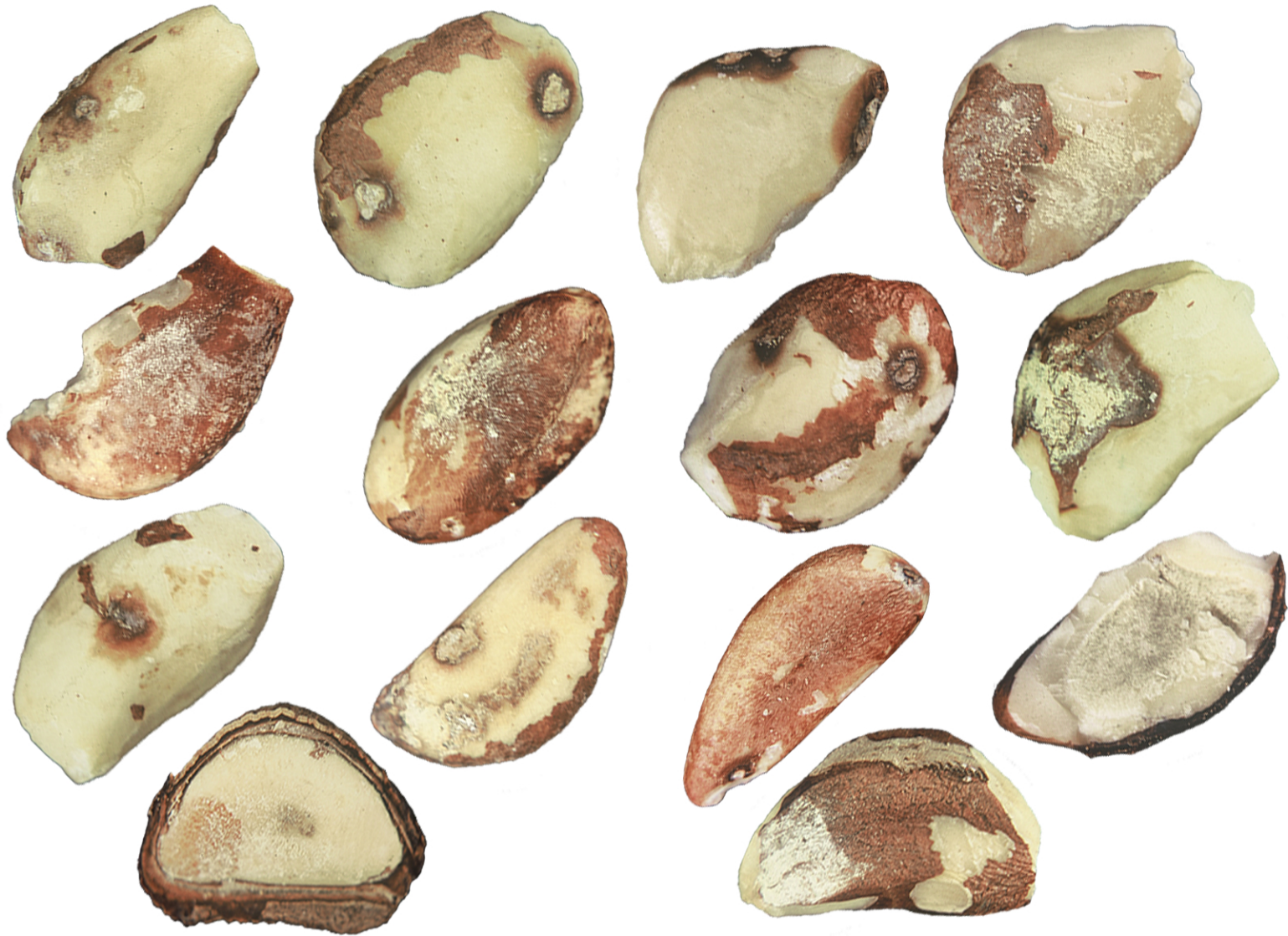
[EQUIPMENT CATALOG](#)

BRAZIL NUTS FOR AFLATOXIN ANALYSIS



Mold, discoloration, or other defects which do not affect the kernel to a greater extent than shown above will be classed as *wholesome* and *included* in chemical analysis.

BRAZIL NUTS FOR AFLATOXIN ANALYSIS



Mold, discoloration, or other defects which affect the appearance to the extent shown above or more will be classed as *obviously objectionable* and will *not be included* in chemical analysis.