

**THE VISUAL AIDS ON THE FOLLOWING
PAGES ARE FOR REFERENCE ONLY AND
NOT INTENDED FOR OFFICIAL USE.**

**TO PURCHASE OFFICIAL VISUAL AIDS PLEASE CONTACT
THE SPECIALTY CROPS INSPECTION DIVISION'S
EQUIPMENT AND FORMS DEPOT**

**USDA, AMS, FVP, SCI
831 MITTEN ROAD, ROOM 200
BURLINGAME, CA 94010
PHONE: 650-552-9073
FAX: 650-552-9147**

[EQUIPMENT CATALOG](#)



SCALD



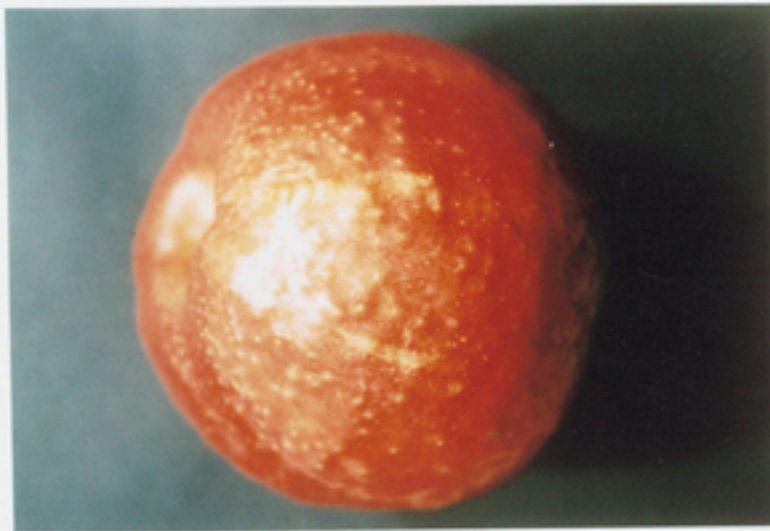
SOFT SCALD

**FOR
IDENTIFICATION
ONLY**



HAIL MARKS

APL-1-IDENT
2/90
(Previously 2/70)



PEBBLING



APPLE SCAB

FOR
IDENTIFICATION
ONLY



SCARS FROM LEAF OR LIMB RUBS

APL-2-IDENT
2/90
(Previously 2/70)



EXTERNAL INDICATION OF APPLE MAGGOT INJURY



APPLE MAGGOT TUNNELS IN FLESH

**FOR
IDENTIFICATION
ONLY**



EXTERNAL INDICATION OF APPLE MAGGOT INJURY

APL-3-IDENT
2/90
(Previously 2/71)



LEAF ROLLER INJURY



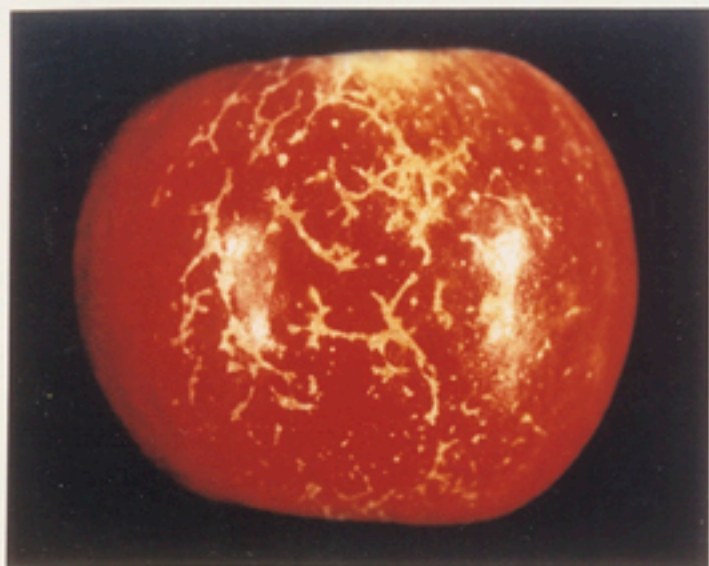
LEAF ROLLER INJURY



BLUE MOLD ROT

**FOR
IDENTIFICATION
ONLY**

APL-4-IDENT
2/90
(Previously 2/71)



Maximum smooth netlike russeting
allowed in U.S. No. 1

APL – C-4
1964

Lower limit U.S. Extra Fancy and U.S. Fancy.
One stripe only; no longer than half the apple
length; no wider than 1/8 inch.

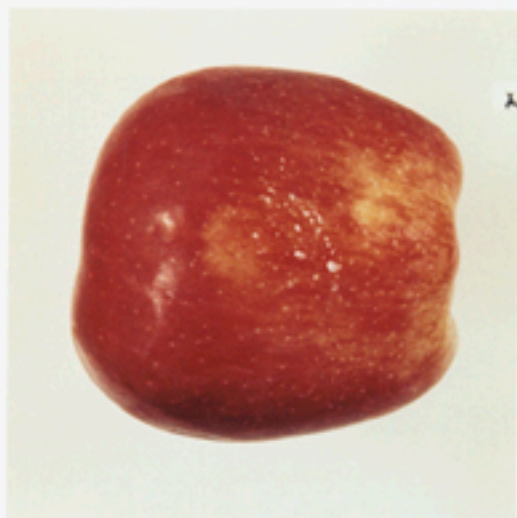
APL – C-6
January 1966



Lower limit U.S. No. 1. Two stripes, each 1/4"
wide, one-half the apple length, or one stripe
1/4" wide from stem to calyx.

APL – C-6
January 1966





SPRAY RESIDUE ON APPLES FROM LOTS WHICH HAVE HAD NO ANALYSIS TO DETERMINE TOXIC CONTENT OF RESIDUE.

Spray residue must be judged primarily on the basis of appearance rather than area. Gray, washed out or indistinct residue is considerably less objectionable than distinct white or thick residue.

LEFT PHOTO: Maximum spray residue of this type allowed as "practically free from spray residue." Ignore highlights on left.

RIGHT PHOTO: Maximum spray residue of this type allowed as "practically free from spray residue." Ignore highlights at both left and right.



LEFT PHOTO: Maximum spray residue of this type allowed as "practically free from spray residue."

RIGHT PHOTO: Scorable as slightly in excess of "practically free from spray residue" only because of distinctly white lower right portion of the larger residue spot. If this entire spot was the indistinct gray color of the left portion, the apple would be passable.



SUNKEN DISCOLORED AREAS OCCURRING AROUND LENTICELS ON GOLDEN DELICIOUS APPLES

Sunken discolored areas occurring around lenticels shall be considered on the basis of appearance—whether they more than slightly, moderately or seriously detract from the appearance of the apple. This disorder may result from gas or chemical injuries or it may be physiological in nature. The disorder is frequently seen on storage apples. **NOTE:** Do not confuse this condition with normally pronounced or russeted lenticels which is characteristic of the variety in some growing regions.



SUNKEN DISCOLORED AREAS AROUND LENTICELS

APL - CP-2
MAY 1975

Lower Limit U.S. Extra Fancy

This photograph illustrates the maximum extent of sunken discolored areas allowed in the U.S. Extra Fancy Grade. (assume other side of apple is free from)



Lower Limit U.S. Fancy & U.S. No. 1

This photograph illustrates the maximum extent of sunken discolored areas allowed in the U.S. Fancy and U.S. No. 1 Grades. (assume other side of apple is free from)



Lower Limit U.S. Utility

This photograph illustrates the maximum extent of sunken discolored areas allowed in the U.S. Utility Grade. (assume other side of apple is free from)

Example of certificate statement under "Condition"

... Damage by sunken discolored areas occurring around lenticels ranges from 4 to 25%, average 12%, including 3% serious damage.

EXCESSIVELY ROUGH OR BARK-LIKE RUSSETING
IN CALYX BASIN OR STEM CAVITY OF APPLES

PHOTO 1



Reminder:

Any Amount of Russeting
Other Than Excessively
Rough or Bark-Like Russeting
is Permitted in the Stem Cavity
or Calyx Basin.

U.S. EXTRA FANCY
U.S. FANCY
U.S. NO. 1

MAXIMUM AMOUNT APPEARANCE CAN BE AFFECTED AND STILL GRADE U.S. EXTRA FANCY,
U.S. FANCY OR U.S. NO. 1.

APPLES
APL-CP-3
FEBRUARY, 1990
(PREVIOUSLY APRIL, 1978)

PHOTO II

ALL PHOTOS U.S. Utility (Not Lower Limit)

PHOTO III



PHOTO IV



APPLES
APL-CP-3 (CONTINUED)
FEBRUARY, 1990
(PREVIOUSLY APRIL, 1978)



BLOSSOM END ROT OF APPLES

This disorder primarily affects Rome, McIntosh, Delicious and Cortland apples grown in the New England States. Although the disease is called "Blossom End Rot," the fungus does not cause active fruit decay unless the blemishes are invaded by a secondary infection.

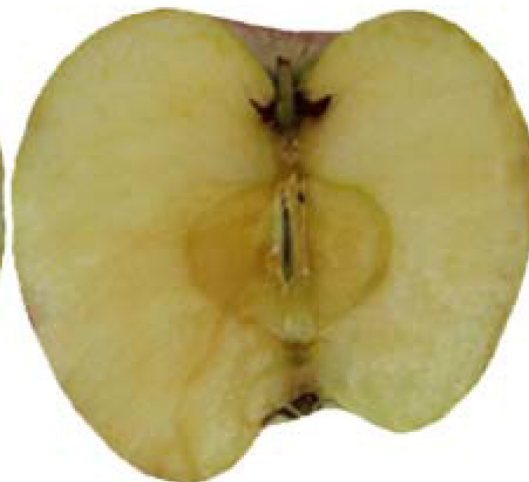
Blossom End Rot shall be scored on the same basis as Cedar Rust – Allow 3/16, 1/4, and 3/4 inch aggregate areas in the U.S. Extra Fancy, U.S. Fancy and U.S. No. 1 and U.S. Utility grades respectively.



Apples
APL-CP-4
March 1990
(Previously May, 1978)

INTERNAL STEM BOWL CRACKING

Injury: Slightly detracting



Damage: Materially detracting



INTERNAL STEM BOWL CRACKING

Serious damage: Seriously detracting



SLIDE 111: SMOOTH SOLID RUSSETING, NEAR UPPER LIMIT
U.S. NO. 1. (BOTH SIDES SAME APPLE.)



SLIDE 112: COMBINATION SMOOTH SOLID AND NET-LIKE
RUSSETING. NEAR UPPER LIMIT U.S. NO. 1 (BOTH SIDES SAME
APPLE.)



SLIDE 113: SMOOTH NET-LIKE RUSSETING. LOWER LIMIT U.S. NO. 1. (BOTH SIDES SAME APPLE.)



SLIDE 115: COMBINATION SMOOTH SOLID AND SMOOTH NET-LIKE RUSSETING. LOWER LIMIT U.S. NO. 1 (BOTH SIDES SAME APPLE.)



SLIDE 116: RED BANDED LEAF ROLLER. (IDENTIFICATION ONLY.)



SLIDE 118: GOLDEN DELICIOUS. COMBINATION SMOOTH SOLID AND SMOOTH NET-LIKE RUSSETING. UPPER LIMIT U.S. UTILITY.



SLIDE 119: GOLDEN DELICIOUS. COMBINATION SMOOTH SOLID AND SMOOTH NET-LIKE RUSSETING. NEAR UPPER LIMIT U.S. UTILITY.



SLIDE 120: MCINTOSH. STEM CAVITY BROWNING – INDICATING BROWN CORE. U.S. UTILITY.



SLIDE 121: MCINTOSH. STEM CAVITY BROWNING – INDICATING BROWN CORE. CULL.



SLIDE 122: MCINTOSH. STEM CAVITY BROWNING – INDICATING BROWN CORE. CULL.



SLIDE 123: HAIL MARKS. BOTH LOWER LIMIT U.S. FANCY OR U.S. NO. 1. (CONSIDER AREA ONLY.)



SLIDE 125: HAIL MARKS. U.S. FANCY OR U.S. NO. 1.



SLIDE 126: HAIL MARKS. LOWER LIMIT U.S. FANCY AND U.S. NO. 1.



SLIDE 127: HAIL MARKS. MORE THAN SLIGHTLY DEPRESSED – U.S. UTILITY.



SLIDE 128: HAIL MARKS. BOTH LOWER LIMIT U.S. NO. 1 AND U.S. FANCY.



SLIDE 129: HAIL MARKS. RIGHT: U.S. UTILITY – LEFT: U.S. FANCY OR U.S. NO. 1



SLIDE 297: INVISIBLE WATERCORE. 4 SEPARATE APPLES –
NONE DAMAGED.



SLIDE 298: INVISIBLE WATERCORE. 4 SEPARATE APPLES -
NONE DAMAGED.



SLIDE 299: INVISIBLE WATERCORE. 4 SEPARATE APPLES –
NONE DAMAGED.



SLIDE 300: INVISIBLE WATERCORE. 4 SEPARATE APPLES -
LOWER LEFT DAMAGED, OTHER 3 NOT DAMAGED.



SLIDE 301: INVISIBLE WATERCORE. 4 SEPARATE APPLES – ALL DAMAGED.



SLIDE 302: INVISIBLE WATERCORE. 4 SEPARATE APPLES - ALL DAMAGED.



SLIDE 303: RED DELICIOUS COLOR. SMALL AREA GOOD RED, STRIPES OF COMPENSATING COLOR AND AREAS OF NO COLOR.



SLIDE 304: RED DELICIOUS COLOR. STREAKS OF COMPENSATING COLOR.



SLIDE 305: RED DELICIOUS COLOR. SMALL AREA GOOD RED, STRIPES OF COMPENSATING COLOR AND AREAS OF NO COLOR.



SLIDE 306: RED DELICIOUS COLOR. FEW STREAKS OF COMPENSATING COLOR, NO GOOD RED.



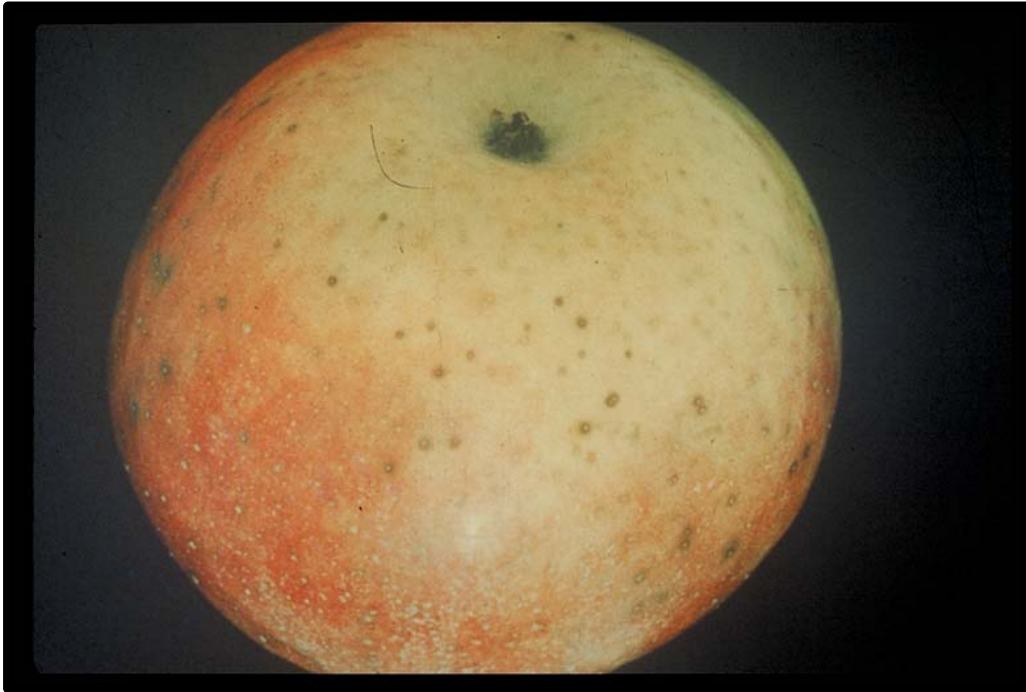
SLIDE 307: RED DELICIOUS SHAPE. UPPER LIMIT U.S. UTILITY.



SLIDE 308: RED DELICIOUS SHAPE. UPPER LIMIT U.S. UTILITY.



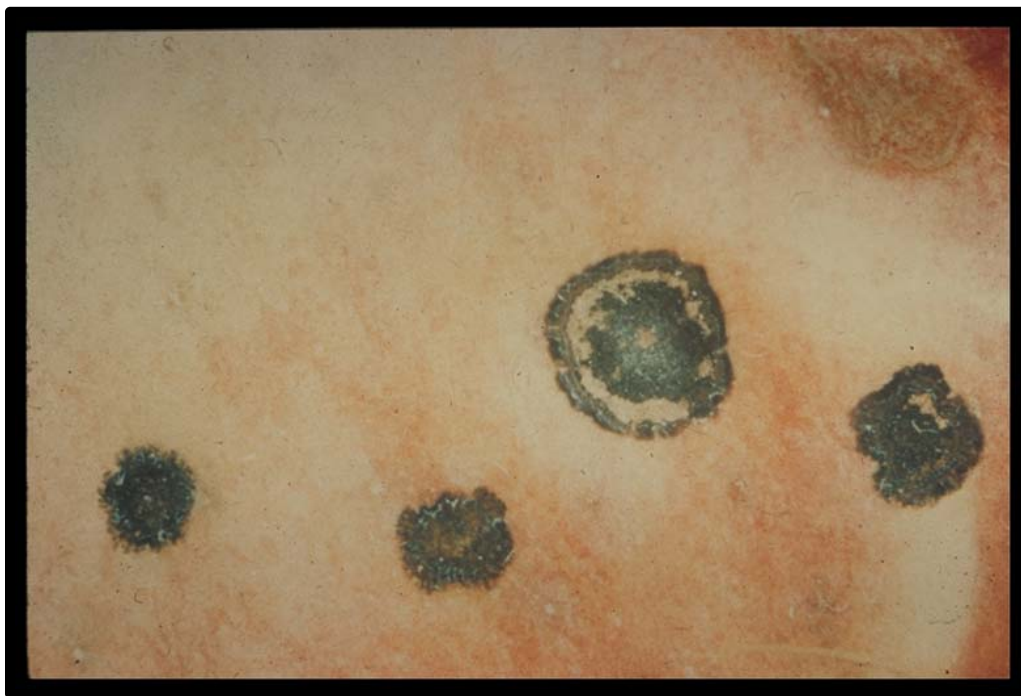
SLIDE 409: DISEASE. JONATHAN SPOT.



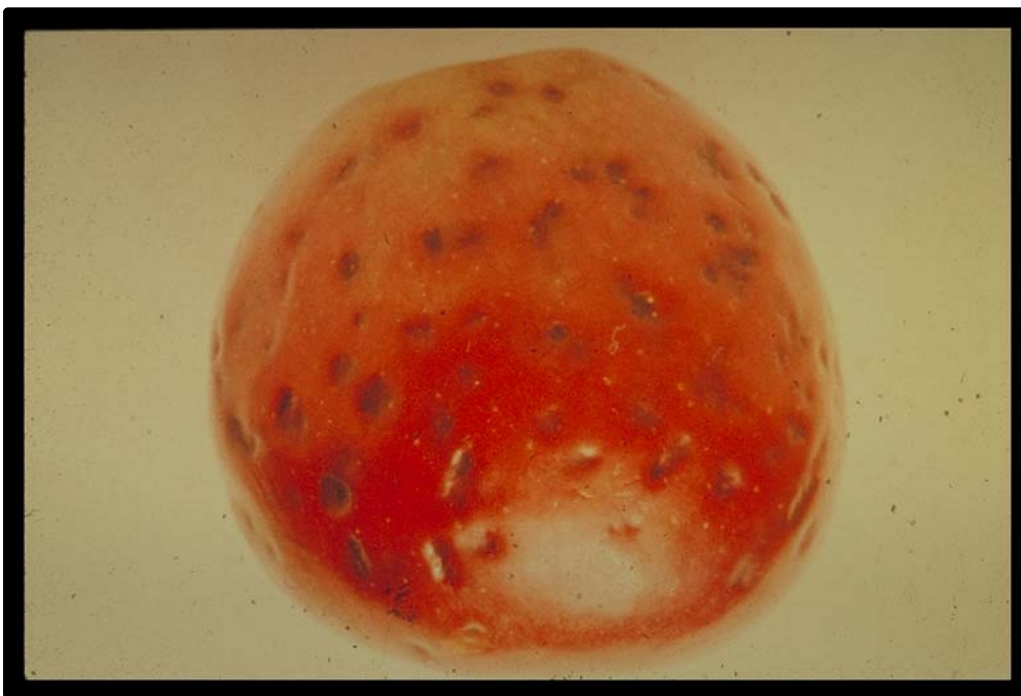
SLIDE 410: FROST INJURY.



SLIDE 411: DISEASE. APPLE SCAB.
(ACTIVE BUT NOT STORAGE SCAB.)



SLIDE 412: DISEASE. BITTER PIT.



SLIDE 413: DISEASE. SOFT SCALD.



SLIDE 414: DISEASE. CEDAR RUST.



SLIDE 415: DISEASE. SCALD.



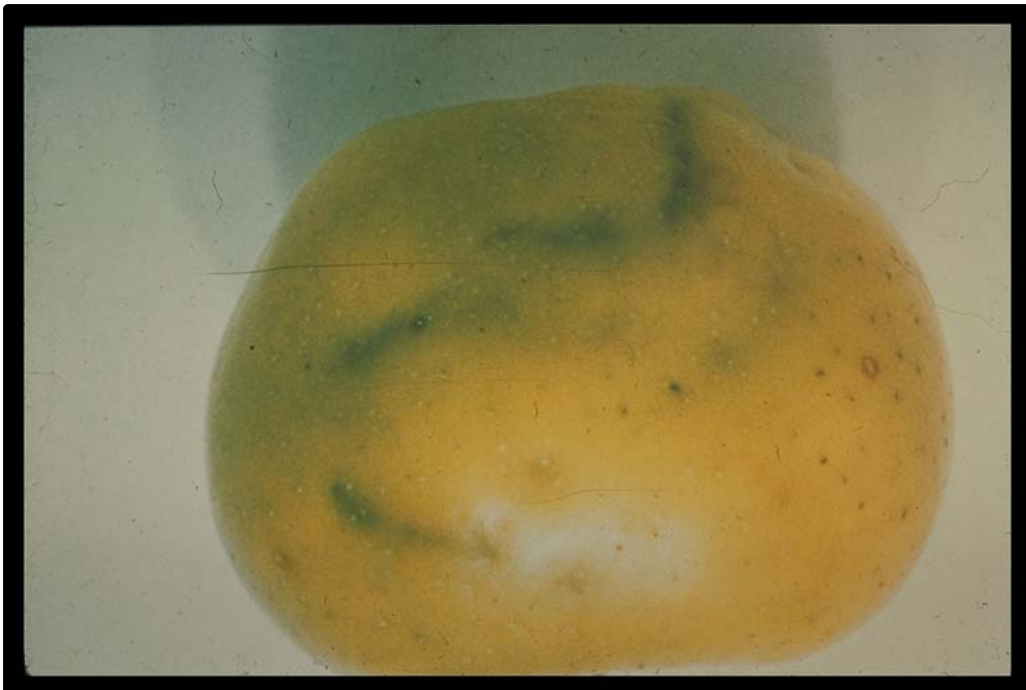
SLIDE 416: INTERNAL BREAKDOWN FOLLOWING WATERCORE.



SLIDE 417: DISEASE. JONATHAN SPOT.



SLIDE 418: APPLE MAGGOT INJURY.



SLIDE 420: RED DELICIOUS COLOR. FEW SPOTS GOOD RED, MOST STRIPES ARE COMPENSATING COLOR, SOME FADED STRIPES ARE NO COLOR.



SLIDE 421: DISEASE. BULL'S-EYE ROT- INITIAL STAGES.



SLIDE 422: DISEASE. BULL'S EYE ROT - ADVANCED.



SLIDE 426: MOLDY, ENLARGED SEED CAVITY - NOT INJURED.



SLIDE 427: MOLDY, ENLARGED SEED CAVITY – SERIOUS DAMAGE.

