

Receipts: This Week: 11,075 Week Ago: 9,109 Year Ago: 6,341

Compared to last week, Feeder Steers sold 2.00 to 8.00 Higher and Heifers sold uneven 1.00 lower to 3.00 higher with the exception of 600 lbs cattle selling 10.00 to 20.00 lower. Demand was good. Slaughter Cows and Bulls sold unevenly steady 3.00 lower to 3.00 higher. In the hay market, demand remains low for all hay and prices are soft for all regions. According to the U.S. Drought Monitor for April 30th, moderate to heavy precipitation fell across much of the High Plains region this week, excluding central and southwest Kansas and southeast Colorado, with warmer than normal temperatures. While the storms responsible for the rain brought damaging hail and tornadoes in parts of the region, the rainfall helped to alleviate drought conditions in many areas. However, severe drought conditions expanded in central and southwest Kansas which has led to dust storms and very poor wheat conditions.

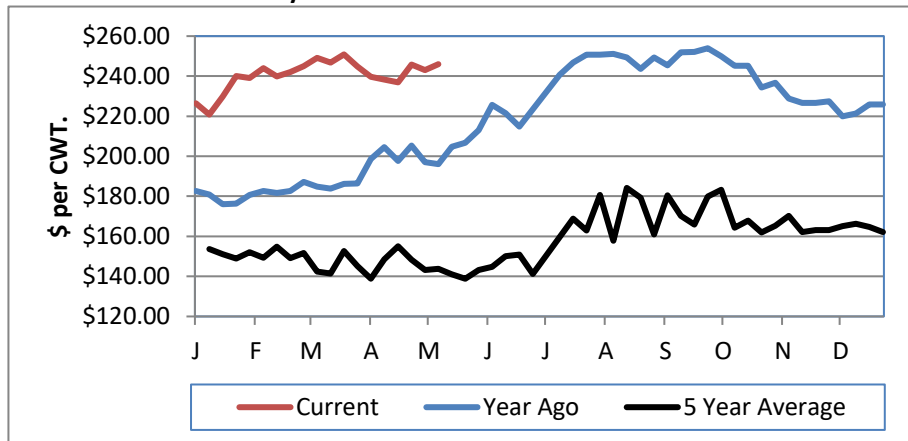
KANSAS WEEKLY FEEDER CATTLE AVERAGES

[Cattle Auction Summary](#)

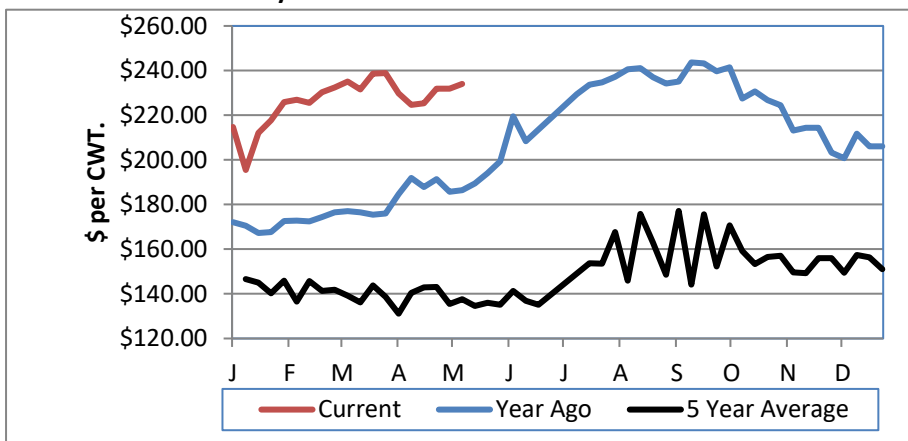
Feeder Steers: M&L 1	This Week	Last Week	Year Ago
400-500 lbs.	\$362.81	\$360.73	\$264.77
500-600 lbs.	\$331.03	\$326.58	\$248.05
600-700 lbs.	\$280.75	\$301.41	\$219.48
700-800 lbs.	\$270.38	\$262.43	\$203.64
800-900 lbs.	\$238.13	\$235.87	\$195.00
900-1000 lbs.	\$225.95	\$224.22	\$185.54

Feeder Heifers M&L 1	This Week	Last Week	Year Ago
400-500 lbs.	\$319.22	\$327.36	\$235.86
500-600 lbs.	\$290.39	\$287.59	\$222.19
600-700 lbs.	\$251.50	\$261.03	\$204.84
700-800 lbs.	\$234.08	\$231.92	\$186.50
800-900 lbs.	\$213.54	\$212.64	\$177.55
900-1000 lbs.	\$201.16	\$202.92	\$172.48

Weekly M&L 1 700-900 lb. Feeder Steer Price



Weekly M&L 1 700-800 lb. Feeder Heifer Price



KANSAS DIRECT FEEDER CATTLE

[Fdr Cattle Direct Summary](#)

Medium and Large 1 (Current FOB)

	Steers	Heifers
600-700 lbs.	NQ	NQ
700-800 lbs.	NQ	220.25-229.80
800-900 lbs.	NQ	218.50

KANSAS WEEKLY GRAIN BIDS

[Kansas Grain Bids](#)

	Terminal Elevators	Country Elevators
US NO 1 HR Winter Wheat	5.9350-6.6825	5.6350-6.3525
US NO 2 Yellow Corn	4.3150-4.8075	4.2650-4.9475
US NO 2 Sorghum	4.3450-4.8975	4.2650-4.8475
US NO 2 Soybeans	11.0850-12.5975	10.7850-11.6375
Sunflower - Oilseeds (country elevators)		NQ
Cotton - West Texas		65.31

KANSAS WEEKLY SLAUGHTER CATTLE

[Cattle Auction Summary](#)

Slaughter Cows

Dressing	Average	High	Low
Prem White	NQ	NQ	NQ
Breakers	134.78	141.80	NQ
Boners	131.29	148.00	125.33
Lean	119.26	138.00	108.96

Slaughter Bulls

	Average	High	Low
YG 1-2	151.07	161.98	141.60

KANSAS WEEKLY ETHANOL BIDS

[Ethanol Summary](#)

DDG	200.00-265.00
Modified Wet	NQ
Wet	70.00-76.00

KANSAS WEEKLY HAY PRICES

[Kansas Hay](#)

	Southwest KS	South Central KS
Alfalfa (Dairy)		
Supreme	NQ	250.00
Premium	NQ	NQ
Ground & Delivered	150.00-200.00	180.00-205.00

KANSAS WEEKLY WTD AVG SLAUGHTER CATTLE REPORT

[KS WEEKLY SLAUGHTER CATTLE](#)

	This Week	Last Week	Last Year
Live Str	\$184.12	\$184.01	\$170.34
Live Hfr	\$184.30	\$184.23	\$169.96
Dressed Str	\$295.00	\$295.00	\$278.35
Dressed Hfr	\$295.00	\$295.00	NQ

USDA Livestock Poultry and Grain Market News

St Joseph, MO
 Phone: (816) 676-7000
 Email: stjoe.lpgmn@usda.gov
<http://www.ams.usda.gov/lpsmarketnewspage>