

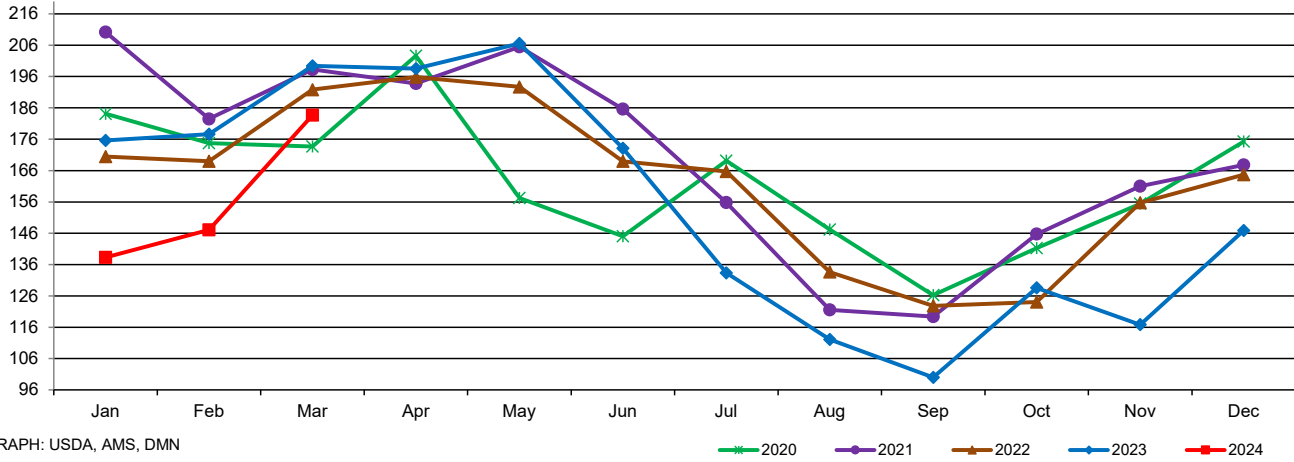
U.S. Nonfat Dry Milk Production, Human (Million Pounds)

	Jan	Feb	Mar	Apr	May	Jun	Jul	Aug	Sep	Oct	Nov	Dec
2020	184.097	174.728	173.655	202.626	157.234	145.033	169.138	147.194	126.249	141.249	155.434	175.252
2021	210.168	182.471	198.254	193.792	205.470	185.604	155.789	121.559	119.384	145.721	161.011	167.804
2022	170.437	168.997	191.815	195.821	192.677	168.971	165.726	133.625	122.804	124.037	155.743	164.711
2023	175.602	177.583	199.390	198.521	206.532	173.093	133.356	112.079	99.972	128.569	116.818	146.889
2024	138.296	147.081	183.703	#N/A	#N/A	#N/A	#N/A	#N/A	#N/A	#N/A	#N/A	#N/A

DATA SOURCE: USDA, NASS Dairy Products, released 5/6/2024

MILLION POUNDS

U.S. Nonfat Dry Milk (NDM) Production, Human



GRAPH: USDA, AMS, DMN

U.S. Manufacturers' Stocks End of Month (Million Pounds) - Nonfat Dry Milk, Human

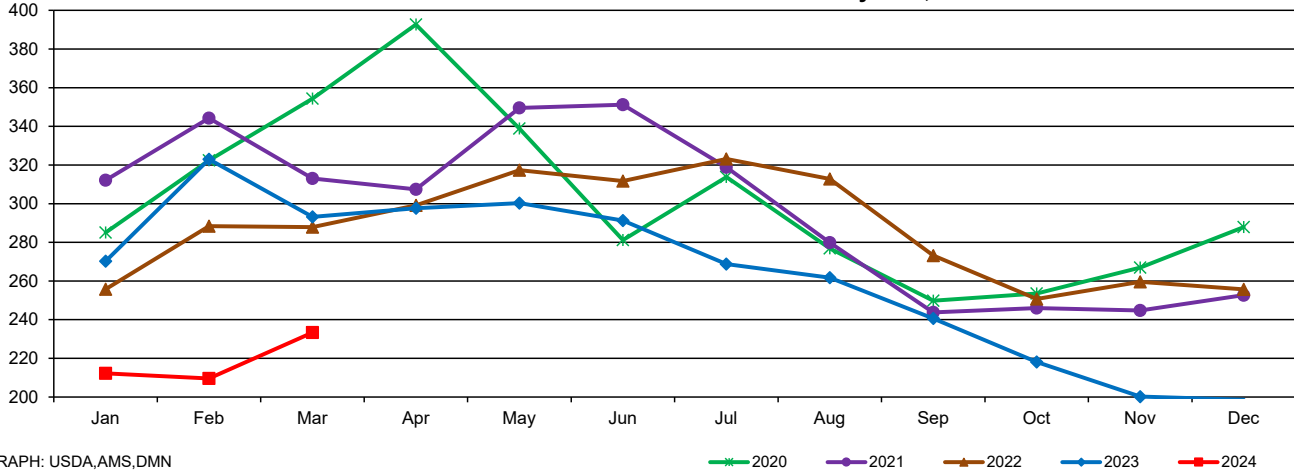
	Jan	Feb	Mar	Apr	May	Jun	Jul	Aug	Sep	Oct	Nov	Dec
2020	285.047	322.435	354.319	392.643	338.824	281.143	313.806	276.884	249.853	253.547	266.922	287.855
2021	312.124	344.227	313.028	307.427	349.522	351.226	318.811	279.835	243.779	246.011	244.785	252.674
2022	255.740	288.351	287.919	299.123	317.325	311.755	323.129	312.818	273.195	250.704	259.552	255.687
2023	270.232	322.952	293.192	297.675	300.319	291.257	268.754	261.700	240.605	218.117	200.180	198.567
2024	212.250	209.600	233.356	#N/A	#N/A	#N/A	#N/A	#N/A	#N/A	#N/A	#N/A	#N/A

DATA SOURCE: USDA, NASS Dairy Products, released 5/6/2024

Stocks held by manufacturers at all points and in transit.

MILLION POUNDS

U.S. Manufacturers' Stocks End of Month - Nonfat Dry Milk, Human



GRAPH: USDA, AMS, DMN